

Ag



64

78

63

65

51

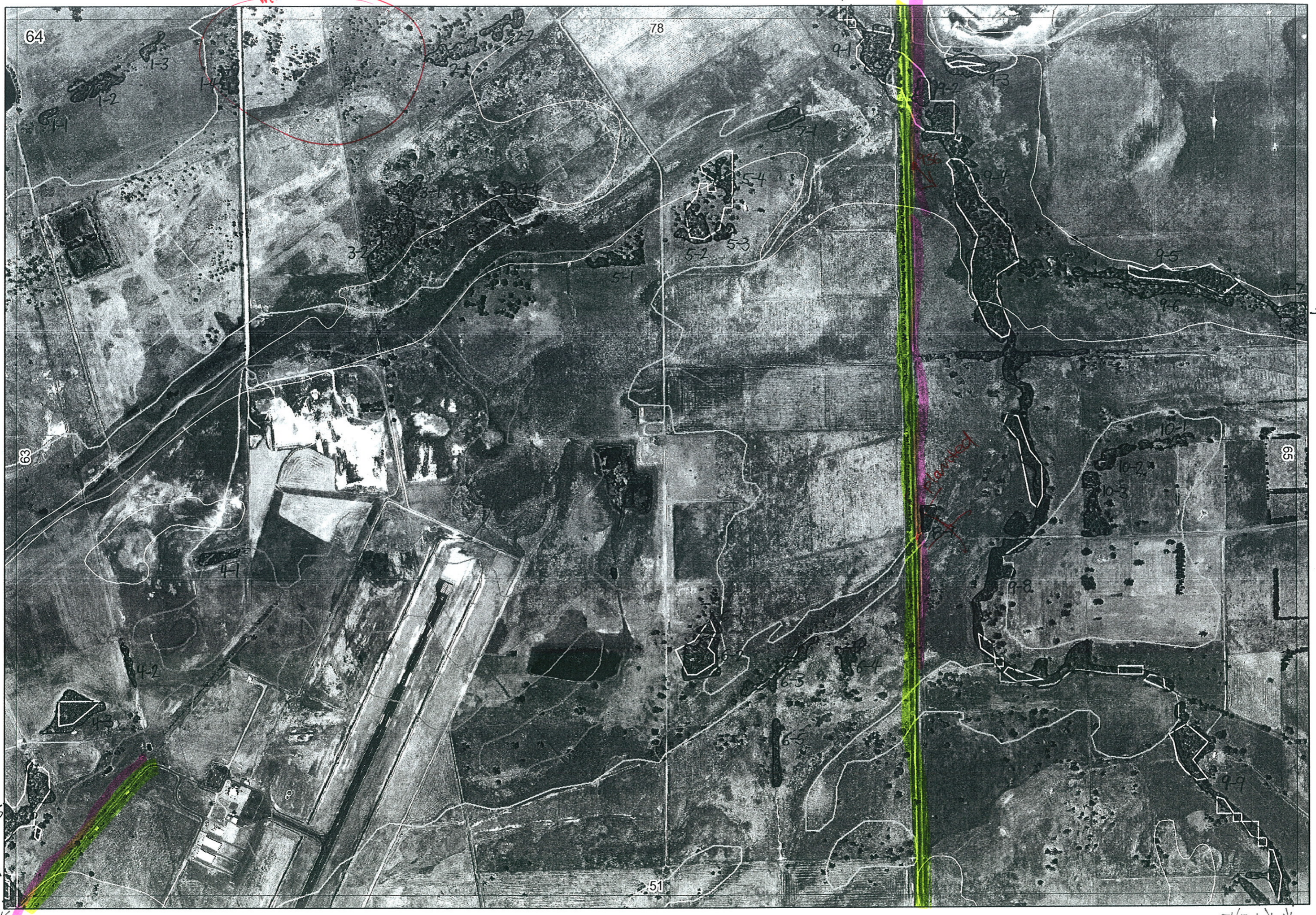
63/9-6 ←

63/9-6 ↗

51/5-1 ↘

can't see from
mining road gate Tuart/Vate

Photo 936



64

78

63

65

51

63/4-6

63/4-6

51/5-1

1-2
1-3
1-4

3-2

4-1
4-2
4-3

8

2-2

5-1

5-2
5-3

6-3
6-4
6-5

9-1

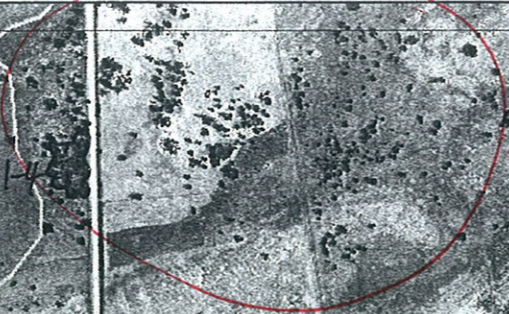
9-2
9-3
9-4

9-8

10-1
10-2
10-3

9-5
9-6

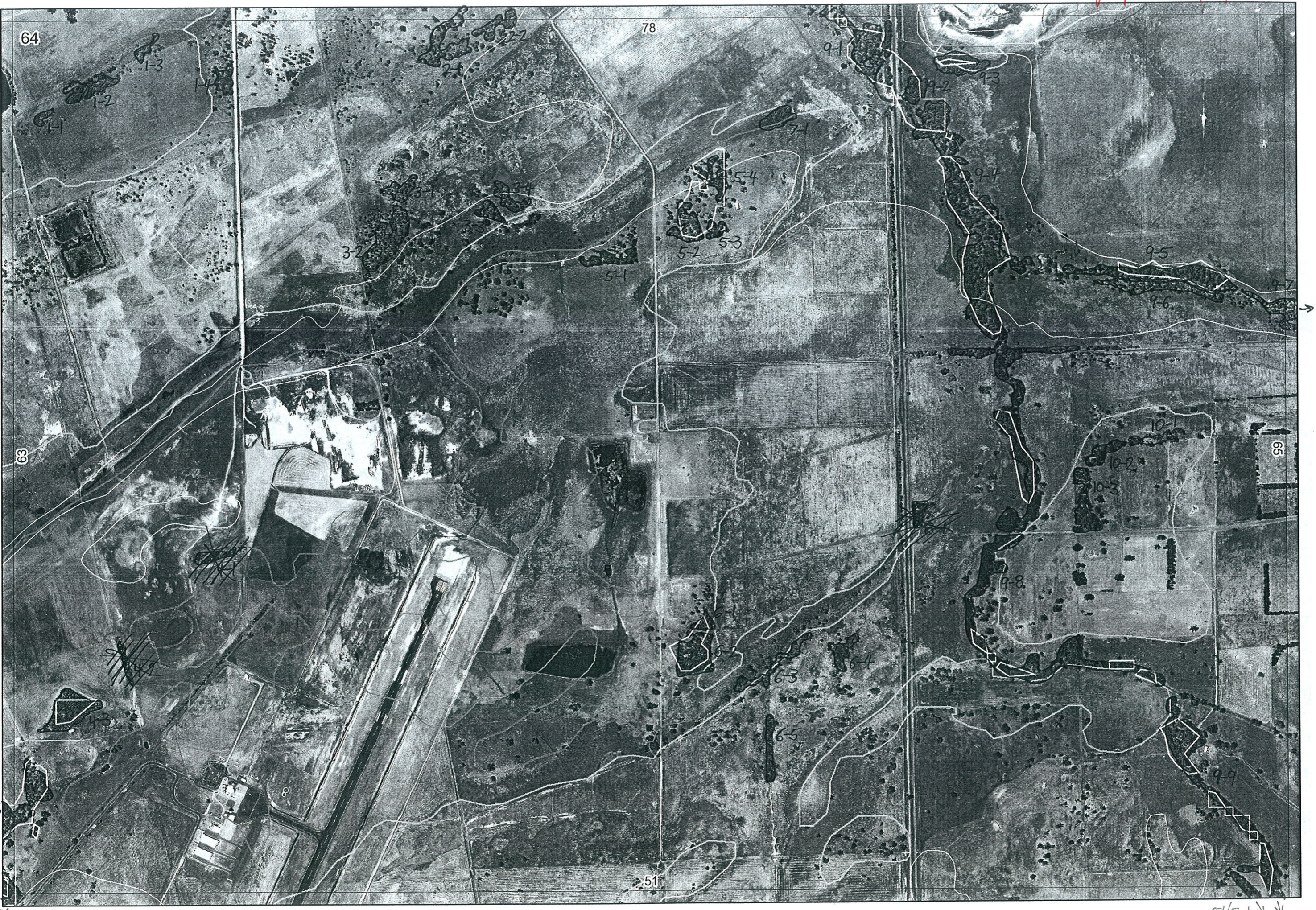
9-9



Painted



Agdept 26/6/06



64

78

63

65

51

1-3

1-2

1-1

2-2

2-1

3-2

5-1

5-2

5-3

5-4

7-1

9-1

9-2

9-3

9-4

9-5

9-6

9-7

10-1

10-2

10-3

64

65

65

63/9-6

←

63/9-6

↙

51/5-1 ↘ ↘

SCP NATURAL AREA FAUNA RECORDING SHEET

Note: For sites with more than one Veg. Unit a separate sheet needs to be used for each Unit

LOCATION/SITE/RESERVE: Swos Rd, BUSSO MAP SHEET NO. 64 REM No. 6-4 REM 2 No. — VEG UNIT Euc rudis

DATE: 12/4/06 TIME: 11:30 to — WEATHER: overcast OBSERVER: Bec + Andrew

HABITAT WHERE FAUNA RECORDED: WETLAND: YES/NO: (NO) UPLAND: YES/NO: — UNDER-STOREY PRESENT: YES/NO: (NO)

HABITAT ELEMENTS PRESENT: LOGS/STUMPS PRESENT: (Tick Code: 0 = none; 1 = few; 2 = moderate; 3 = abundant)

LARGE TREES WITH HOLLOWS PRESENT: (Tick Code: 0 = none; 1 = few; 2 = moderate; 3 = abundant)

Species	Seen or heard, scats, tracks	No.	Activity (eg flying over, perched, on log, under rock, feeding etc)	If feeding - on what, or plant identification	Breed ing (Y/N)	Remarks or Notes
<u>?</u>	<u>—</u>		<u>—</u>	<u>—</u>		<u>big nest in Euc rudis, ? Osprey?</u>

REM	RM2	XMAP	LINTYPE	LINEAR	MLU	UNITS	UPLAND?	WETLAND?	VISIT?	DETAIL/ Area Name	VEG CON	Field date 200_	OBS From	YNOTASS	DET VIS REQD	COMMENTS	VEG STRUC/ DENS	FCT	DOMINANTS		
																			1	2	3
X1	1	-	-	-	S	1	-	Y			>D	12/4	annual	NO ACCESS	Y		F				
X1	2	-	-	-	S	1	-	Y			"	"	annual	"	V	Transplant to site	F				
X1	3	-	-	-	S	1	-	Y			"	"	annual	"	V		F				
X1	4	-	-	-	S	1	-	Y			"	"	annual	"	V		F				
X2	1	-	-	-	S	1	Y	-			"	"	annual	"	Y		F				
X2	2	-	-	-	S	1	Y	-			"	"	annual	"	Y	F					
X3	1	-	-	-	S	1	-	Y			CD-D					W					
X3	2	-	-	-	S	1	-	Y			CD-D12		annual			W					
X3	3	-	-	-	S	1	-	Y			CD-D					W					
X3	4	-	-	-	S	1					CD-D					W					
X4	1	-	-	-	P	1	Y	-	Y		CD	11/4	dist			planted ✓ ✓					
X4	2	-	face	Y	P	1	Y	-	Y		CD	11/4	dist			planted ✓ ✓					
X4	3	-	-	-	P	1	Y	-	Y		G	11/4	dist		N		E	21b	Juncus	Banki atl	Mamm
X5	1	-	-	-	P	1	Y	-			CD-D12		dist			W	-				
X5	2	-	-	-	P	1	Y	-			CD-D12					W	-				
X5	3	-	-	-	P	1	Y	-			CD-D12					W	-				
X5	4	-	-	-	P	1	Y	-			CD-D12					W	-				
X6	1	-	-	-	P	1		Y			CD-D	12	dist			W	-		Evered	italico	

Summary/General Comments

Cross-overs - 63/9-6
51/5-1

REM	RE M2	XM AP	LIN TYPE	LINEAR	MLU	UNITS	UPLAND?	WETLAND?	VISIT?	DETAIL/ Area Name	VEG CON	Field date 200_	OBS From	YNOTASS	DET VIS REQD	COMMENTS	VEG STRUC/DENS	FCT	DOMINANTS		
																			1	2	3
x6	2	-	-	-	P	1	-	Y			CO-D 13	13	dist			W	-	Eucrad	Melcho		
x6	3	-	channel	Y	P	1	-	Y			CO-D	11	dist			W	-	Eucrad	Melcho		
x6	4	-	-	-	P	1	-	Y			CO-D	12	dist			W	-	Eucrad	Melcho		
x6	5	-	fence	Y	P	1	-	Y			CO	12	dist			W	-	Eucrad			
x7	1	-	-	-	P	1	-	Y			CO-D	12	dist		N		W	-	Melcho		
x8	1	-	-	-	P	1	Y	-													
x9	1	Y	channel	B	S	1	-	Y			CO-D	12	dist		N		W	-	Eucal	Peppi	Eucrad
x9	2	-	-	-	P	1	-	Y			CO-D	12	edge		N		W	-	Melcho	Eucrad	
x9	3	-	-	-	P	1	-	Y			D-CO	24/04	edge				F		Melchope	Agellex	Eucrad
x9	4	-	channel	B	P	1	-	Y			CO-D	12	dist		N		W	-	Melcho	Eucrad	Merr
x9	5	-	channel	Y	P	1	-	Y			CO-D		aerial								
x9	6	-	channel	Y	P	1	-	Y			CO-D		"								
x9	7	Y	channel	Y	P	1	-	Y			CO-D		"								
x9	8	-	channel	Y	P	1	-	Y			CO-D	12	dist						Melcho	Eucrad	Eucal
x9	9	Y	channel	B	P	1	-	Y			CO-D	-	aerial						Melcho	Merr	Eucrad

planted

come as 9-4

come as 9-4

come as 9-4

936

Summary/General Comments

