



↓

↓ 53/1-1

65

79

neri, S. lit

H1

Barri
x. oc
jardi

E. rudo
mel rhu
Pepi
mari

Meloha
CO of Euc road

1-3

Euc road
0/3

Euc road
meloha

Meloha
Nuyll
Warr
CO

Meloh
CO of

64

Euc road

plantings

PRINCE FIELD
RD

pepi scattered

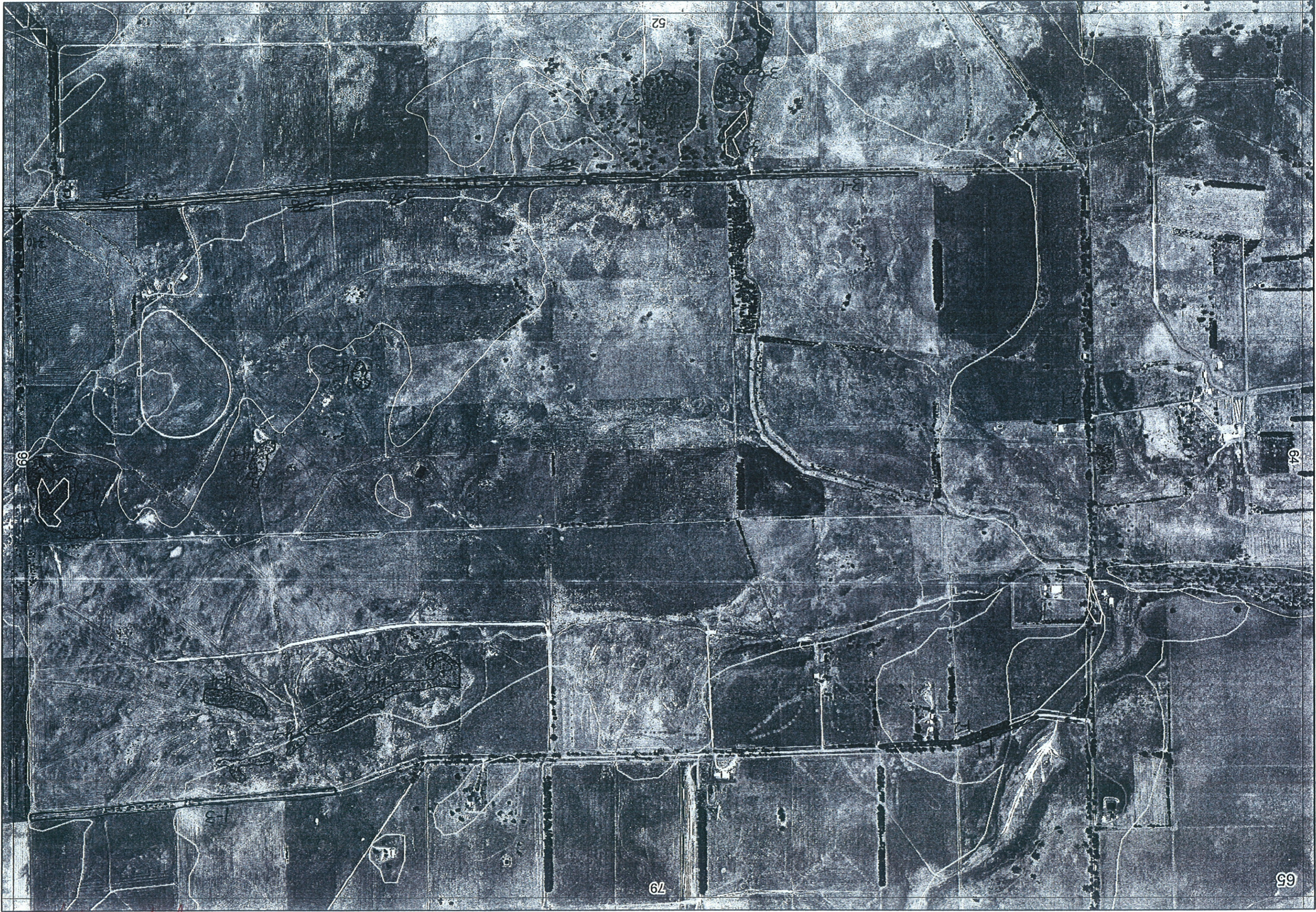
SOUTH

52

53/1-1



53/1-1



Hydropt 26/6/06

69

R E M	RE M2	XM AP	LIN TYPE	L I N E A R	M L U	U N I T S	U P L A N D ?	W E T L A N D ?	V I S I T ?	DETAIL/ Area Name	VEG CON	Field date 200_	OBS From	YNOTASS	D E T V I S R E Q D	COMMENTS	VEG STRUC/ DENS	FCT	DOMINANTS			
																			1	2	3	
X1	1	-	road	Y	P	1	Y	-	Y		D	26 4	edge		N		F	-	Eucal	Ban lit		
X1	2	-	road	Y	P	1	Y	-	Y		D	26 4	edge		W		F	-	Eucal	Eucmar	Xyloc	
X2	1	-	road	Y	P	1	Y	-	Y		CD-D	26 4	edge		N		W	-	Eucal	Nuyflo	Melunc	
X3	1	-	road	Y	P	2	Y	Y	Y		D	26	edge		W		W		Melunc	Melvin	Melha	
											D	26	edge		W		F		Eucrad	Melha		
X3	2	-	road	Y	P	1	-	Y	Y		D	26	edge		N	some Agoffe, <i>Exocarpus odoratus</i> <i>Isolpis redora</i>	F	-	Eucrad	Marr	Melha	
X3	3	-	road	Y	P	1	-	Y	Y		D	26	edge		W	occasional Agoffe	F	-	Eucrad	Melha	Marr	
3	4	-	road	Y	P	3	-	Y	Y		D	26	edge		W	dry heath <i>Isolpis redora</i>	F	-	Eucrad	Agoffe	Melha	
											D	26	edge				W	-	Melha Melunc	Hea sol Hea sol		
X3	5	-	-	-	P	1	-	Y	Y		D	26 4	edge		N				Eucrad	Melha	Marr	
X3	6	Y	channel	Y	P	1	-	Y	Y		D	"	dist		N				Eucrad	Melha	Marr	
X3	7	-	-	-	P	1	-	Y	Y		D	"	dist		N				Melha	Eucrad		
3	8	-	road	Y	P	2	Y	Y	Y		D	"	dist		W				Eucal	Melha	Ban lit	
																<i>Carex brachytricha</i> ?			Rogal	Melha	Hale var	
																<i>Poaia flagelliformis</i> -?						
3	9	-	road	Y	P	1	-	Y	Y							Agoffe planted + other stuff			Hale var	Kincos	Adenmei	
3	10	=	fence	Y	P	1	Y	-	Y	planted									Eucal			
X4	1	-	-	-	P	1	-	Y	Y		CD-D	26 4	dist		N				W	-	Melha	Eucrad
X4	2	-	-	-	P	1	-	Y	Y		CD-D	26 4	dist		W				W	-	Melha	Eucrad

Summary/General Comments

R E M	RE M2	XM AP	LIN TYPE	L I N E A R	M L U	U N I T S	U P L A N D ?	W E T L A N D ?	V I S I T ?	DETAIL/ Area Name	VEG CON	Field date 200_	OBS From	YNOTASS	D E T V I S R E Q D	COMMENTS	VEG STRU C/ DENS	FCT	DOMINANTS		
																			1	2	3
x4	3	-	-	-	P	1	-	Y			CD-D	26/4	dist		N		W	-	Melrha	Eucrad	
x4	4	-	-	-	P	1	-	Y	Y		"	"	dist		N		WV	-	Melrha	Eucrad	
x4	5	-	-	-	P	1	-	Y	N		"	"	aerial		N		W	-	Melrha	Eucrad	
x4	6	-	-	-	P	1	-	Y	N		"	"	aerial		N		W	-	Melrha	Eucrad	
x4	7	-	-	-	P	1	-	Y	Y		CD	26/2	aerial		N		W	-	Melrha	Melunc	
x3	8	-	road	Y	P	4	-	Y	Y		D-G	26/4	trans		N	some areas of CD healthy	W	-	Eucal	Melrha	Bantif
															N		W	-	Melrha	Acasal	
															N	planted Agdistis + other spp.	W	-	Melunc	Acasal	
															N	significant species - driven species list	HS	2	Ademai	Hobcor	Hobcor
x1	3	-	road	Y	P	1	-	Y	Y		D	26/4	trans		N	significant spp. driven spp. list	W	7?	Melvim	Melunc	Melrha

Summary/General Comments