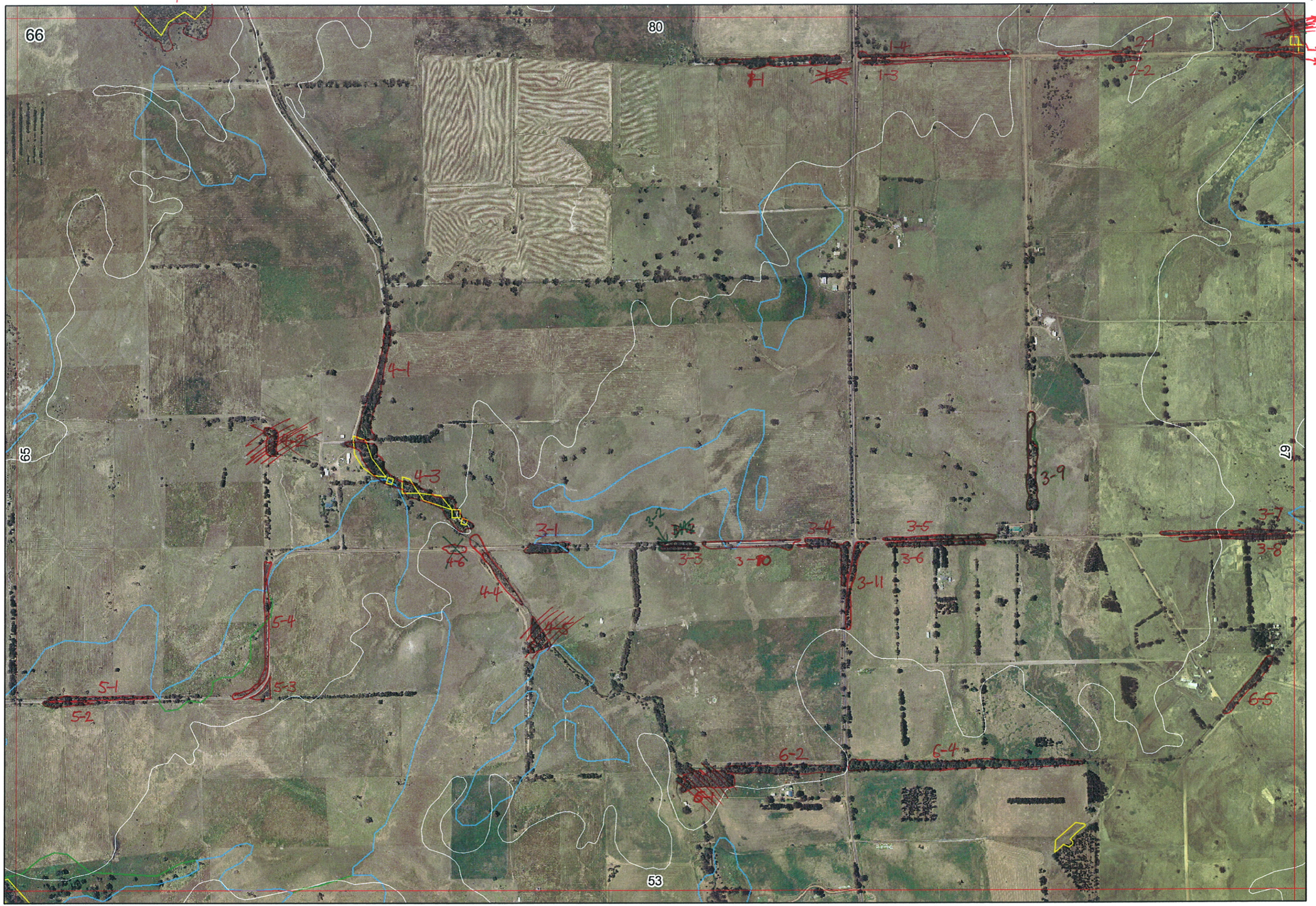


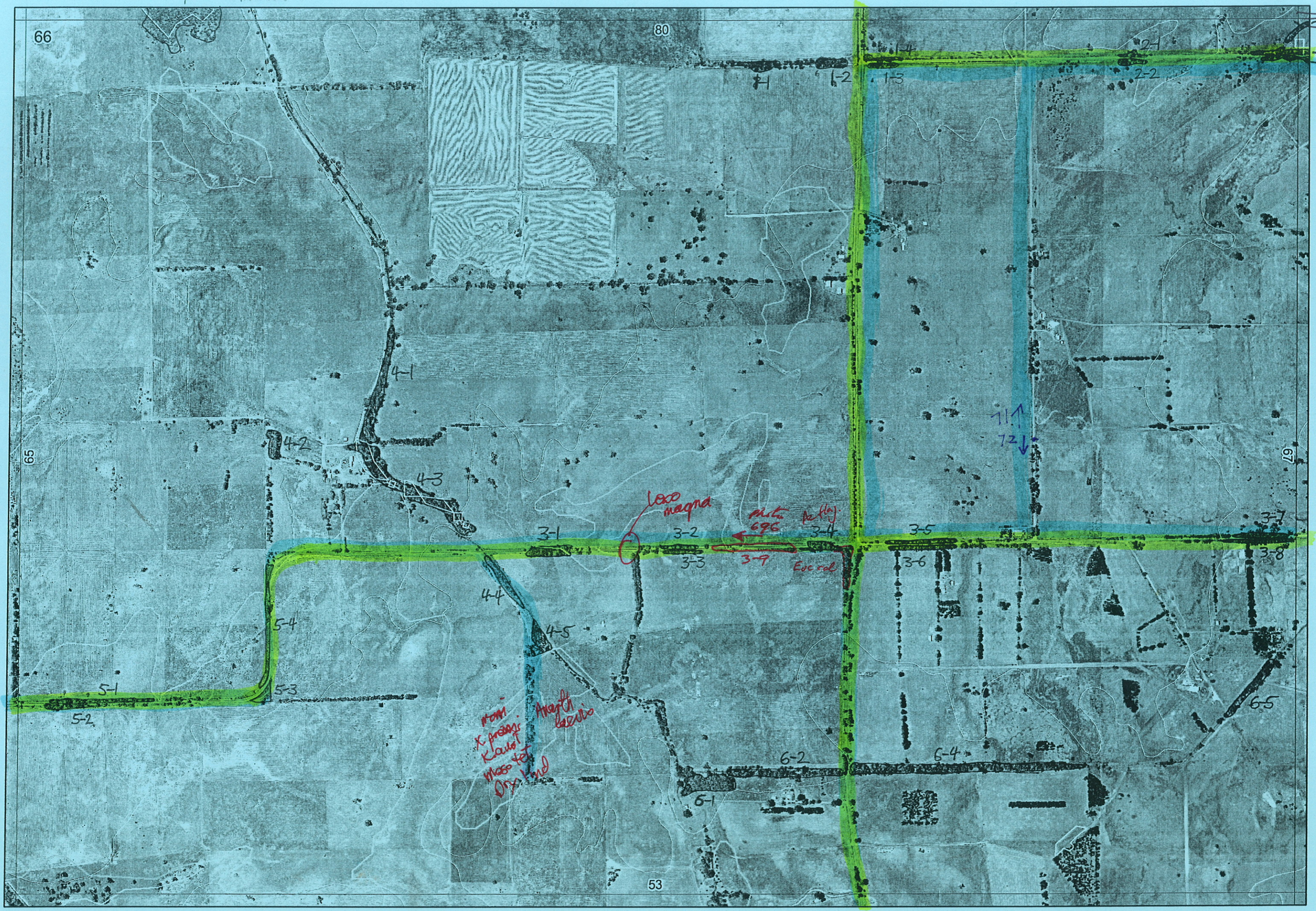
Ag

180/7-1

67/1-1
67/1-2
67/1-3



180/7-1 Meluha D-CO



66

80

67/1-1

67/1-2

67/1-3

2-1

2-2

1-1

1-2

1-3

4-1

4-2

4-3

3-1

3-2

3-3

3-4

3-5

3-7

3-8

5-4

4-4

4-5

5-1

5-3

5-2

mom
x prairie
Klaus!
Mass for
Dry land

Anaph.
laevis

leoo magna

Mts Kelly
696

Esc rd

71↑
72↓

67

65

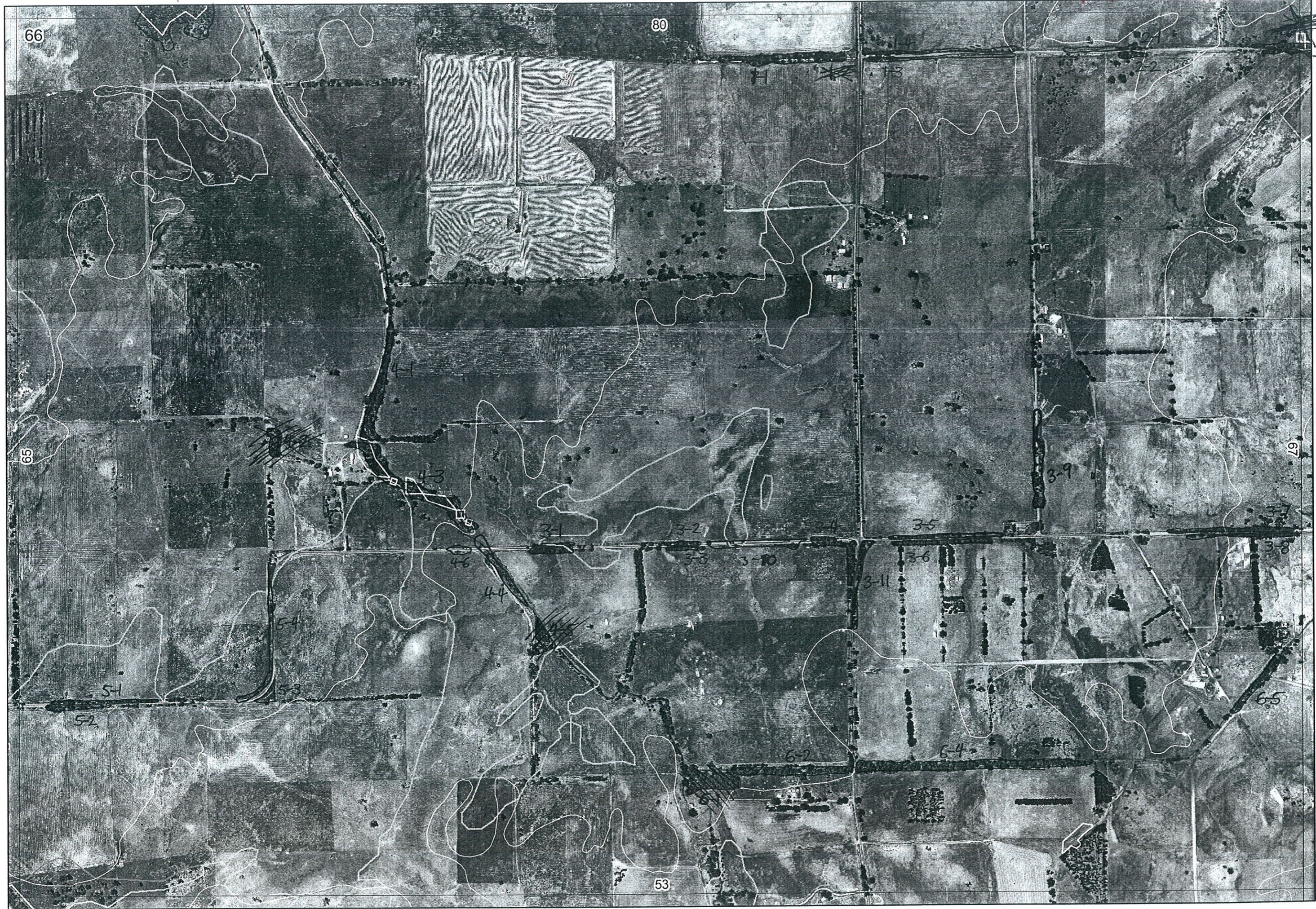
53

6-2

6-4

180/7-1

Agdept 26/6/06



67/1-1
67/1-2
67/1-3

R E M	RE M2	XM AP	LIN TYPE	L I N E A R	M L U	U N I T S	U P L A N D ?	W E T L A N D ?	V I S I T ?	DETAIL/ Area Name	VEG CON	Field date 200_	OBS From	YNOTASS	D E T V I S R E Q D	COMMENTS	VEG STRU C/D ENS	FCT	DOMINANTS		
																			1	2	3
x1	1	-	road	Y	P	1	Y	-			CD-D	27/4	edge		N		F		Eucal		
1	2	-	road	Y	P	1	Y	-			CD						F		Eucal		
x1	3	-	road	Y	P	2	Y	Y			CD-D	27/4	edge		N	Spp List, some plantings	F		Melunc	Regcil	Hakmag
x1	4	-	road	Y	P	1	Y	-			CD-D	27/4	edge		N	Spp List, some plantings	Sh		Melunc	Regcil	Hakmag
x2	1	-	road	Y	P	2	-	Y			CD-D	27/4	edge		N	G. elongata, Spp list Loxmag	F		Eucal		
x2	2	-	road	Y	P	2	-	Y			CD-D	27/4	edge		N	"	Sh		Melunc	Melunc	
x2	2	-	road	Y	P	2	-	Y			D						F		Eucal		
x3	1	-	road	Y	P	1	Y	-			CD-D	"	"			X. preiss	F	-	Eucal		
x3	2	-	"	Y	P	1	Y	-			CD-D	26/4	edge			Kinans X. preiss	F	-	Eucal		
x3	3	-	"	Y	P	1	Y	-			"	"	"			"	F	-	Eucal		
x3	4	-	"	Y	P	1	Y	-			D	26/4	edge		N	Alph. ornata , Kinans, X. preiss	F	-	Eucal		
x3	5	-	"	Y	P	2	Y	-			CD-D	26/4	edge		N	Ast fasc (non creekline) Allium, Kunz mic, Kingaust	Sh		Kunzig	Allium	Kingaust
x3	6	-	road	Y	P	2	Y	-			CD-D	26/4	edge		N		F		Eucal		Kingaust
x3	7	-	road	Y	P	1	Y	-			D-CD	26/4	edge		N		F		Eucal		Kingaust
x3	8	-	road	Y	P	1	Y	-			D-CD	26/4	edge		N		F		Eucal		Kingaust
x3	9	-	road	Y	P	2	Y	-			CD-D	26/4	edge		N	Eucalons p. 92 N. Loxmag, Hakmag, Allthys etc	F	10a?	Eucal	Loxmag	X. preiss
x4	1	-	channel	Y	P	1	-	Y		on 4-3	D	26/4	edge			See Andrews spp list	Sh		Kunzig	Loxmag	X. preiss
x4	2	-			P	1	-	Y		planted							W				
x4	3	-	channel	Y	P	1	-	Y			CD-D	26	dist			Some plantings	W		Morri		
x4	4	-	channel	Y	P	1	Y	-			D-D	26/4	edge			Signif flora / list	SH	10b	C. sp. whicher	Meluncin	Hakdd

Summary/General Comments

