

85

86

3147

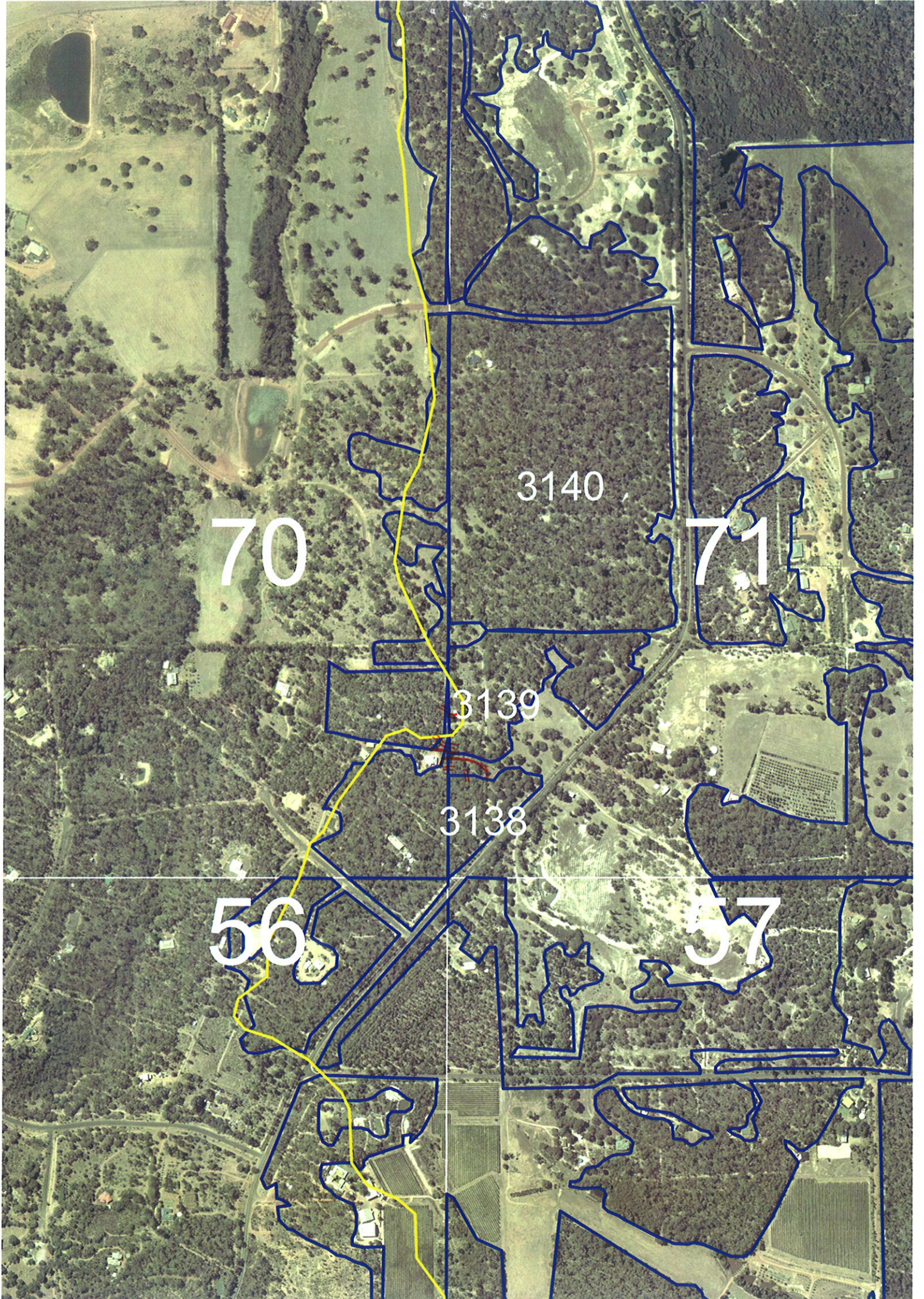
3146

3145

70

71

3143



70

3140

71

3139

3138

56

57

Map Sheet Number 71

Pre Field Recorder(s) AW

Field Recorder(s) AM EN

Swan Bioplan Vegetation Mapping Data

R E M	RE M2	XM AP	LIN TYPE	L I N E A R	M L U	U N I T S	U P L A N D ?	W E T L A N D ?	V I S I T ?	DETAIL/ Area Name	VEG CON	Field date	OBS From	YNOTASS	D E T V I S R E Q O	COMMENTS	VEG STRU CTURE DENS	FCT	DOMINANTS		
																			1	2	3
X11	1	-	-	-	P	1	Y	-			D-G	20/6	aerial				W		Euc mag	Euc cal	Xan preissii
X12	2	Y	-	-	P	1	Y	-			D-G	22/6	dist				W		Euc mag	Euc cal	Xan preissii
X13	3	Y	road	Y	P/WS	1	-	Y			G-D	21/6	edge		Toly list		F		Euc cal	Euc mag	Agoflex
X14	-	-	road	Y	P	1	Y	-			VG	21/6	edge		Top down same as them ← Creechline - not different except Boss a bit Allo flex		F		Euc cal	Euc mag	Agoflex
X15	-	-	-	-	WS	1	Y	-			G	21/6	edge				F		Euc cal	Euc mag	Agoflex
X16	-	-	-	-	WS	1	Y	-			G	21/6	edge				F		Agoflex	Euc cal	Euc mag
X17	-	-	-	-	WS	1	Y	-			D	21/6	edge				F		Agoflex	Euc mag	
X18	Y	-	-	-	WS	2	Y	-			G	21/6	edge		All 1-3, 1-6, 70/2-1 - the one have a lousy J/M dom + a sandy peppi comm in them. Brian change place		F		Euc cal	Euc mag	Xan preissii
X19	Y	-	-	-	WS	1	Y	-									F		Agoflex		
X21	Y	-	-	-	P	2	Y	Y	Y		5	20/6	dist				F		Agoflex	Euc cal	
X22	-	-	road	Y	P	1	Y	-			5	22/6	dist				F		Euc cal	Melpre	
X23	-	-	-	-	P	1	Y	-			D	21/6	edge				F		Euc cal	Rappi	Euc mag
X24	-	-	-	-	P	1	Y	-			D-G	21/6	dist				F		Euc cal	Mel rhaps	
X25	-	-	-	-	P	1	Y	-	N		D-G	21/6	dist				F		Euc cal	Euc mag	Agoflex
X26	-	-	-	-	P	3	Y	Y	Y		G-D	21/6	edge		Bigger than 21, 22, 23, 24		F		Euc cal	Rappi	
																	F		Mel rhaps	Mel preissii	
																	F				

Summary/General Comments

2

Map Sheet Number 71

Pre Field Recorder(s) AW

Field Recorder(s) AW, EH, P. 2001/2

Swan Bioplan Vegetation Mapping Data

RE M	RE M2	XM AP	LIN TYPE	L I N E A R	M L U	U N I T S	U P L A N D ?	W E T L A N D ?	V I S I T ?	DETAIL/ Area Name	VEG CON	Field date 2006	OBS From	YNOTASS	D E T V I S R E Q D	COMMENTS	VEG STRUC/ DENS	FCT	DOMINANTS		
																			1	2	3
X27	-	-	-	-	WS	1	Y	-			G	27/6	edge			Alto grass Euc bush Bank other	F		Ago flex	Euc mang	Kan glob
X28	-	-	-	-	WS/P	3	Y	Y	Y		G	27/6	edge			Bank other Beaufortia Spacia in Swamp	F		Ago flex	Euc mang	Kan glob
X29	-	-	-	-	WS	1	Y	-			G	27/6	edge			Bank other	F		Ago flex	Euc mang	Kan glob
X210	Y	road	Y	WS	1	Y	-				D-6	27/6	edge				F		Euc cel	Ago flex	Euc mang
X211	-	-	-	-	WS	1	Y	-			G	27/6	central				F		Ago flex	Euc mang	Kan glob
X212	-	-	-	-	WS	1	Y	-			G	27/6	central				F		Ago flex	Euc mang	Kan glob
X31	-	-	-	-	P	1	Y	-	Y		5	20/6	dist				F		Euc cel	Euc mang	Kan glob
X32	-	road	Y	P	2	Y	Y	Y			5	20/6	edge			plantings removed	F		Euc cel	Euc mang	Kan glob
X33	-	-	-	-	P	1	-	Y			D	27/6	dist				F		Mel r hoph	Euc rudis	
X34	-	-	-	-	P	1	-	Y			D	27/6	dist				F		Mel r hoph	Euc rudis	
X35	-	-	-	-	P	1	Y	-			D	27/6	central				F		Mel r hoph	Euc rudis	
X36	-	-	-	-	P	1	-	Y			D	27/6	dist				W		Mel r hoph	Mel prais	
X37	-	-	-	-	P	1	-	Y			D	27/6	central				W		Mel r hoph	Mel prais	
X38	-	-	-	-	P	1	Y	-			D	27/6	dist				F		Euc cel	Poppi	
39	-	-	-	-	P	1	-	Y			D	27/6	dist				F		Mel r hoph	Mel	
310	-	-	-	-	P	1	-	Y			D	27/6	dist				W		Mel		

Summary/General Comments

3

Map Sheet Number 71

Pre Field Recorder(s) AW

Field Recorder(s) AW, EH Richard & class

Swan Bioplan Vegetation Mapping Data

R E M	RE M2	XM AP	LIN TYPE	L I N E A R	M L U	U N I T S	U P L A N D ?	W E T L A N D ?	V I S I T ?	DETAIL/ Area Name	VEG CON	Field date 2006	OBS From	YNOTASS	D E T V I S I O N R E Q D	COMMENTS	VEG STRUC/ DENS	FCT	DOMINANTS		
																			1	2	3
	311	-	-	-	P	1	Y	-									F		Agofle		
X	41	-	-	-	P	1	-	Y	Y		5.3	20/6	edge				F		Melrha	Melpre	Eucrud
X	42	-	-	-	P	1	Y	-	Y		5.3	20/6	edge				F		Eucal	Agofle	
X	43	-	-	-	P	1	-	Y	Y		5.7	20/6	dist				W		Melrha	Melpre	
X	44	-	road	Y	P	1	Y	-	Y		5	20/6	edge				F		Eucal	Agofle	
X	45	-	road	Y	P	1	Y	-	Y		5.3	20/6	edge				F		Melrha'	Eucrud	
X	46	-	road	Y	P/S	2	Y	-	Y		5.3	20/6	edge		Cahtri Haxvar		F		① Eucal	② Eucrud	③ Melrha
X	47	-	-	-	S	1	-	Y	Y		5	20/6	within		Crinia insignifera.		F		Melvim	Melrha	Eucrud
X	48	-	road	Y	P	2	Y	-	Y		5.3	20/6	dist				F		Melrha	Eucrud	
X	51	-	-	-	S	1	-	Y	Y		5.7	20/6	dist				W		Melrha	Eucrud	
X	52	-	-	-	S	1	-	Y	Y		5.7	20/6	dist				W		Melrha	Eucrud	
X	53	Y	-	-	S	1	-	Y	Y		5.7	20/6	dist				W		Melrha	Eucrud	
X	54	-	-	-	P	1	Y	-	Y		5.3	20/6	dist				F		Eucal		
X	55	-	-	-	P	1	Y	-	N		5	20/6	aerial	NW			F		Eucrud	Agofle	
X	56	-	-	-	P	1	Y	-	Y		5	20/6	dist				F		Eucal	Agofle	Eucrud
	57	-	fence	Y	P	1	Y	-									F		Eucal		
	58	-	-	-	P	1	-	Y									F				
	59	-	-	-	P	1	Y	-									F		Eucal		

Summary/General Comments

4

Map Sheet Number 71

Pre Field Recorder(s) AW

Field Recorder(s) AW, EH

Swan Bioplan Vegetation Mapping Data

R E M	RE M2	XM AP	LIN TYPE	L I N E A R	M L U	U N I T S	U P L A N D ?	W E T L A N D ?	V I S I T ?	DETAIL/ Area Name	VEG CON	Field date	OBS From	YNOTASS	D E T V I S R E Q D	COMMENTS	VEG STRUC/ DENS	FCT	DOMINANTS		
																			1	2	3
510	-	-	-	-	P	1	Y	-									W		Eucal		
511	-		road	Y	P	1											W				
512	-		road	Y	P	1	Y	-									F		Eucal		
X49	-		-	N	P	1	-	Y	Y		S3	20/6	edge				F		Agofie	Euclid	Eucal
X110				-		1	-	Y			D	22/6	within				SH		Agofie	Homfirm	Agosparsse

Summary/General Comments