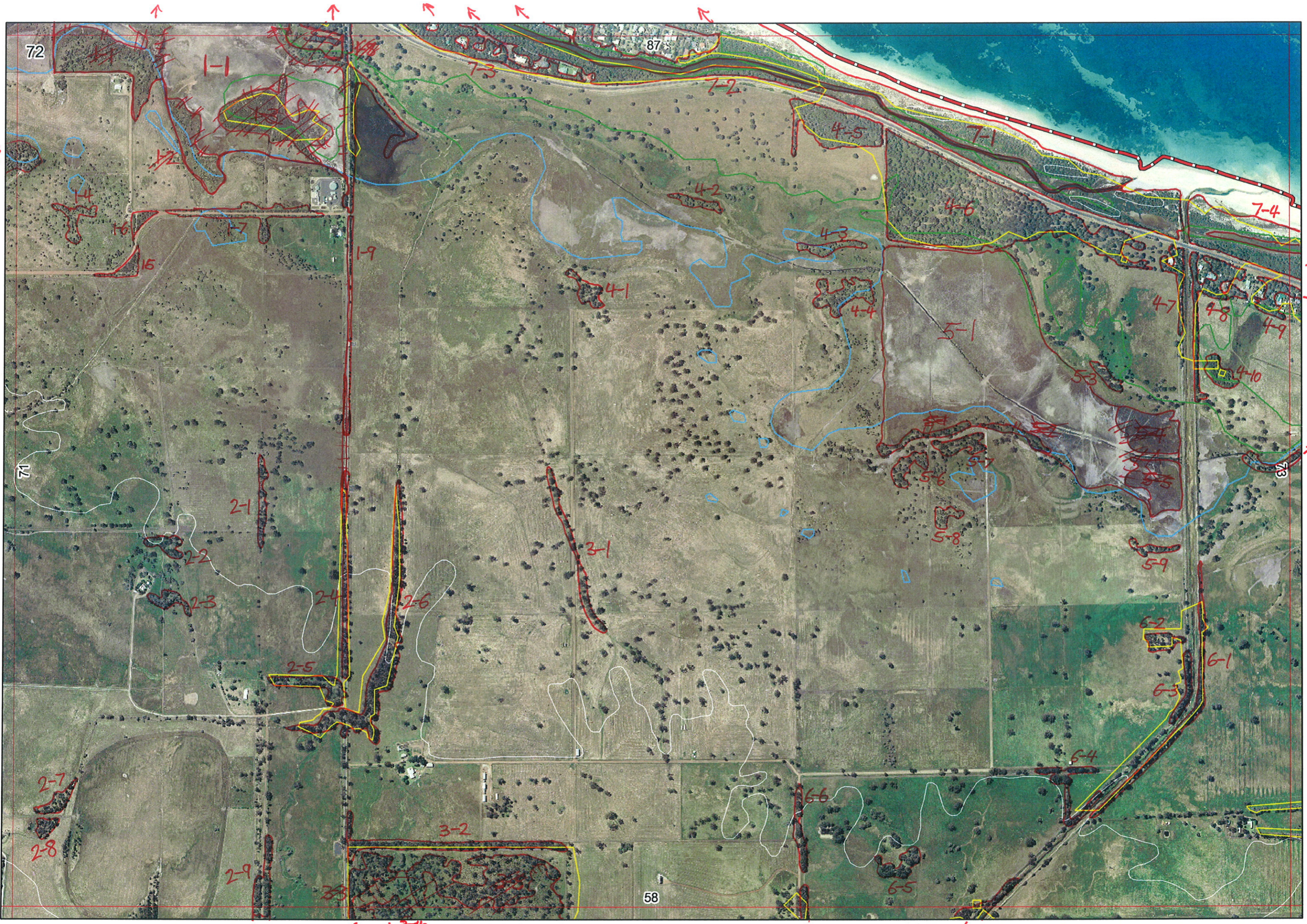


Ag



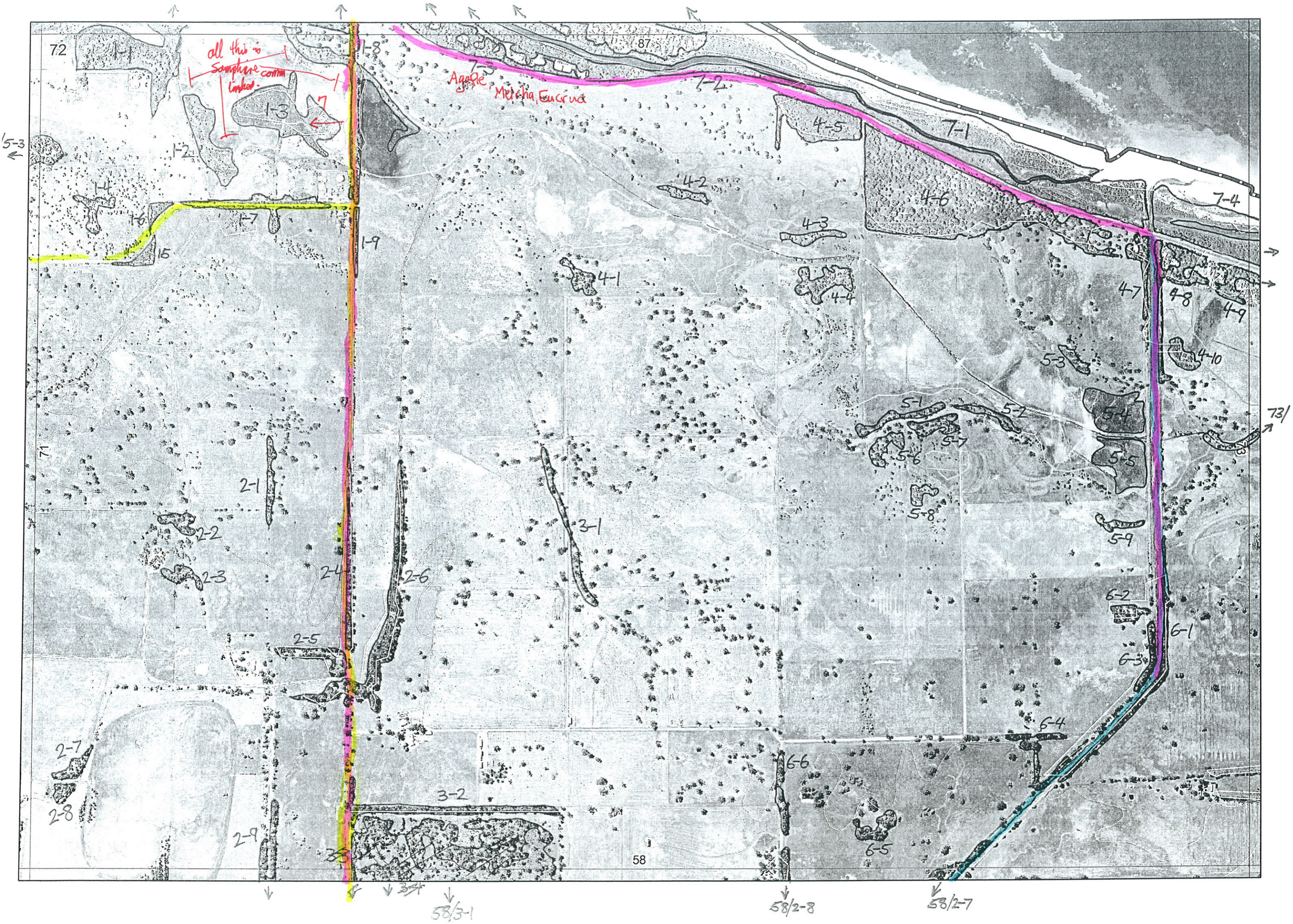
7/5-3

73/1

58/3-1

58/2-8

58/2-7



all this is
Scaevola comm.
looked.

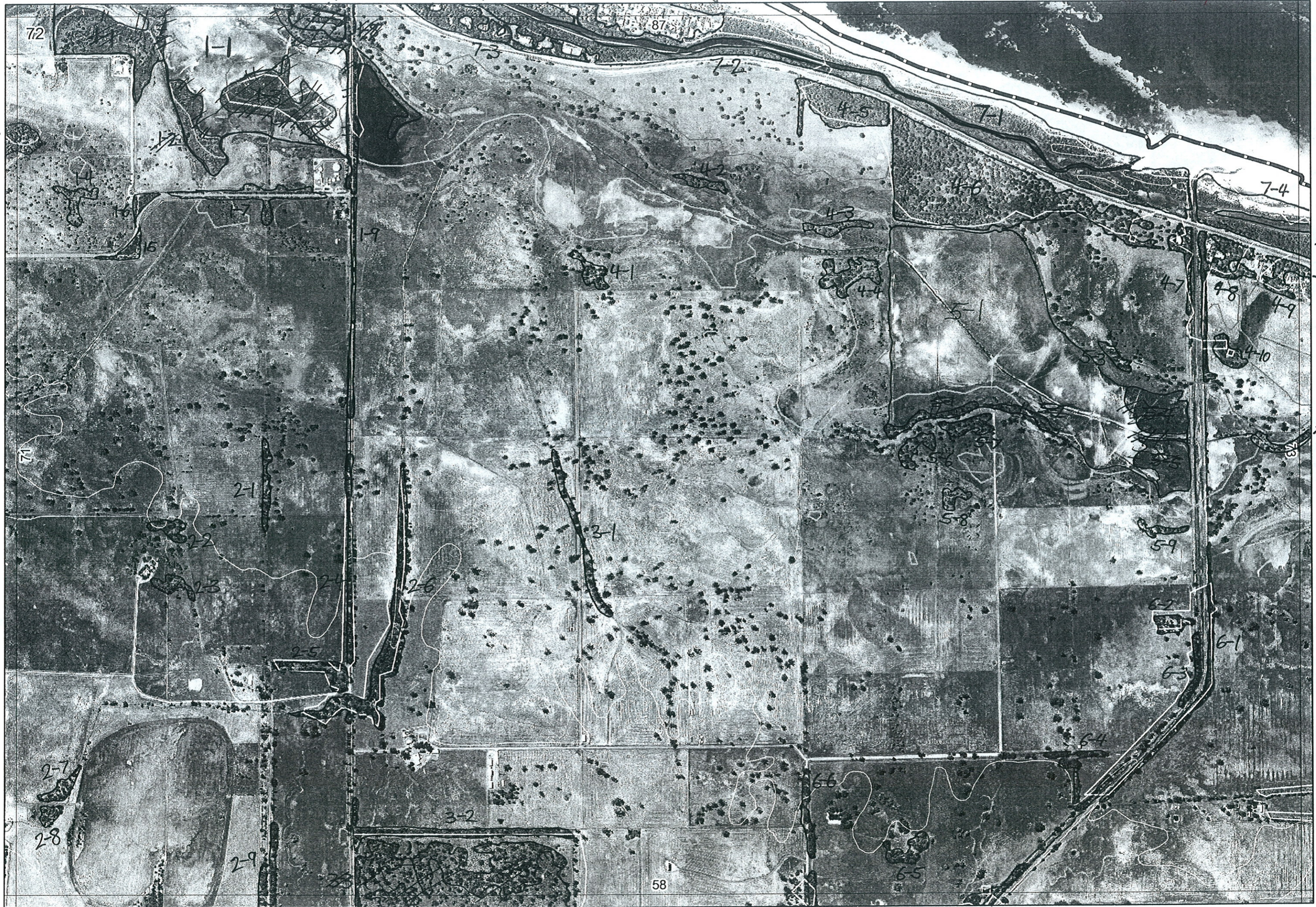
Agave
Melia, Eucalypt

58/3-1

58/2-8

58/2-7

Ag 14/8/06



1/5-3

73/1-1

58/3-1

58/2-8

58/2-7

2

Map Sheet Number 72

Pre Field Recorder(s) AW

Field Recorder(s) AW, EH, Richard Clark

Swan Bioplan Vegetation Mapping Data

R E M	RE M2	XM AP	LIN TYPE	L I N E A R	M L U	U N I T S	U P L A N D ?	W E T L A N D ?	V I S I T ?	DETAIL/ Area Name	VEG CON	Field date 2006	OBS From	YNOTASS	D E T V I S R E Q D	COMMENTS	VEG STRU C/ DENS	FCT	DOMINANTS		
																			1	2	3
x29	Y	road	Y	P	1	Y	-	Y			5	20/6	dist				F		Eucal	Agofle	
x31	-	channel	Y	P	1	-	Y	Y			5.7	20/6	aerial/ dist	AW			W		Eucrud		
x32	-	road	Y	P	2	Y	-	Y			5.3	20/6	edge				F		Eucal ^①	Kingia ^①	Eucrud ^② Melrha ^②
x41	-	-	-	P	1	Y	-	N			5.7	20/6	dist	AW			F		Eucrud	Melrha	Agoflex
x42	-	-	-	Q	1	-	Y				CD-D	22/6	aerial		? maybe some Melvim in these		W		Melrha		
x43	-	-	-	Q	1	-	Y				CD-D	22/6	aerial				W		Melrha		
x44	-	-	-	P	1	-	Y				CD-D	22/6	aerial				W		Melrha		
x45	-	-	-	Q	1	Y	-				D	22/6	edge				F	30b	Agofle	Lepgla	
x46	-	-	-	Q	2	Y	Y				D-D	22/6	edge				F	30b	Agofle	Spyridium	
																wetland comm by aerial	F		Melrha		
x47	-	channel	Y	Q	1	Y	-				G	22/6	edge				F		Agofle	Lepid glab	Spyrid glob
x48	-	channel	Y	Q	1	Y	-				G	22/6	"			diplopia lignosa	F		Agofle	"	"
x49	Y	-	-	Q	1	Y	-				CD-D	22/6	edge			some plantings	F		Agofle		
x410	-	-	-	Q	1	-	Y				D-CD	22/6	edge				F		Mel + leph		
x51	-	-	-	Q	2	-	Y										W		Mel r haph	Euc rudis	
52	-	-	-	Q	1	-	Y									perhaps Mel. v. community	H	16	Scaevola herbland		
x53	-	-	-	Q	1	-	Y				CD-D	22/6	dist.				W		Mel r haph	Euc rad.	
54	-	-	-	Q	1	-	Y										H		Halo		

delete
4-1

Summary/General Comments

3

Map Sheet Number 72

Pre Field Recorder(s) AW

Field Recorder(s)

Swan Bioplan Vegetation Mapping Data

R E M	R E M 2	X M A P	L I N E T Y P E	L I N E A R	M L U	U N I T S	U P L A N D ?	W E T L A N D ?	V I S I T ?	D E T A I L A r e a N a m e	V E G C O N	F i e l d d a t e 2 0 0 _	O B S F r o m	Y N O T A S S	D E T V I S I O N R E Q D	C O M M E N T S	V E G S T R U C T U R E D E N S	F C T	D O M I N A N T S				
																			1	2	3		
55					Q	1		Y									H		Halo				
X56					Q	1		Y			CD-D	22/6	aerial				W		Mel/ha	Eucrad			
X57					Q	1		Y			CD-D	22/6	aerial				W		Mel/ha	Eucrad			
X58					Q	1		Y			CD-D	22/6	aerial				W		Mel/ha				
X59					Q	1	Y				CD-D	22/6	dist.				F		Eucrad	Mel + heph.			
X61			channel	Y	Q	1	Y				D	22/6	edge				F		Eucrad	Mel + heph	Agoflex		
X62					Q	1	Y				CD-D	22/6	dist				F		Agoflex	Eucrad			
X63			channel	Y	Q	1	Y				CD-D	22/6	edge			Diposponthyrus	F		Eucrad	Agoflex			
X64			road	Y	P	1	Y				CD-D	22/6	dist			odd Merri	F		Eucrad	Agoflex			
X65					P	1	Y				CD-D	22/6	aerial				F		Agofle	Eucrad			
X66			road	Y	P	1	Y				CD-D	22/6	aerial				F		Eucrad				
X71	Y		coast	Y	Q	4	Y	Y	N	Toby inlet veg + flora A. Weston 1997	E		report		N		HS	-	Acacoc	Spihir	Ammare		
																	W	30b	Agofle	Spyglo	Hibcen		
																	S	-	Junkra	Isonod	Melvim w-Melcut Mel/ha		
X72	Y		channel	Y	Q	3	Y	Y	N	II	EUG		report		N		F	30b	Agofle	Spyglo	Lepgla		
																	W	-	Melvim	Mel/ha	Melcut		
																	S	-	Junkra	Isonod			
X73	Y		channel	Y	Q	1	Y		N		VG		aerial	AW	N		F	30b	Agofle	Spyglo	Lepgla		
Summary/General Comments																							
X74	Y		coast	Y	Q	4	Y	Y	N	Toby inlet veg + flora A. Weston 1997	E		report		N		F	30b	Agofle	Spyglo	Lepgla		
																	HS	-	Acacoc	Spihir	Ammare		
																	S	-	Junkra	Isonod			
																	W	-	Melvim	Mel/ha	Melcut		