

Ag

73

74

59

72/7-4

72/4-9

72

74/6-6

59/5-1

59/4-1

59/2-3

59/5-1



73

72/7-4
←

72/4-9
←

72
←

74

74/1-6
→

59/5-1
→

59/4-1
↓

↓

↓

59/2-3
↓

↓

↓

59/5-1
↓



Ag 14/8/06

73

72/7-4
←

2/4-9
←

←

74

→ 74/1-6

→ 59/5-1

↓
59/4-1

↓

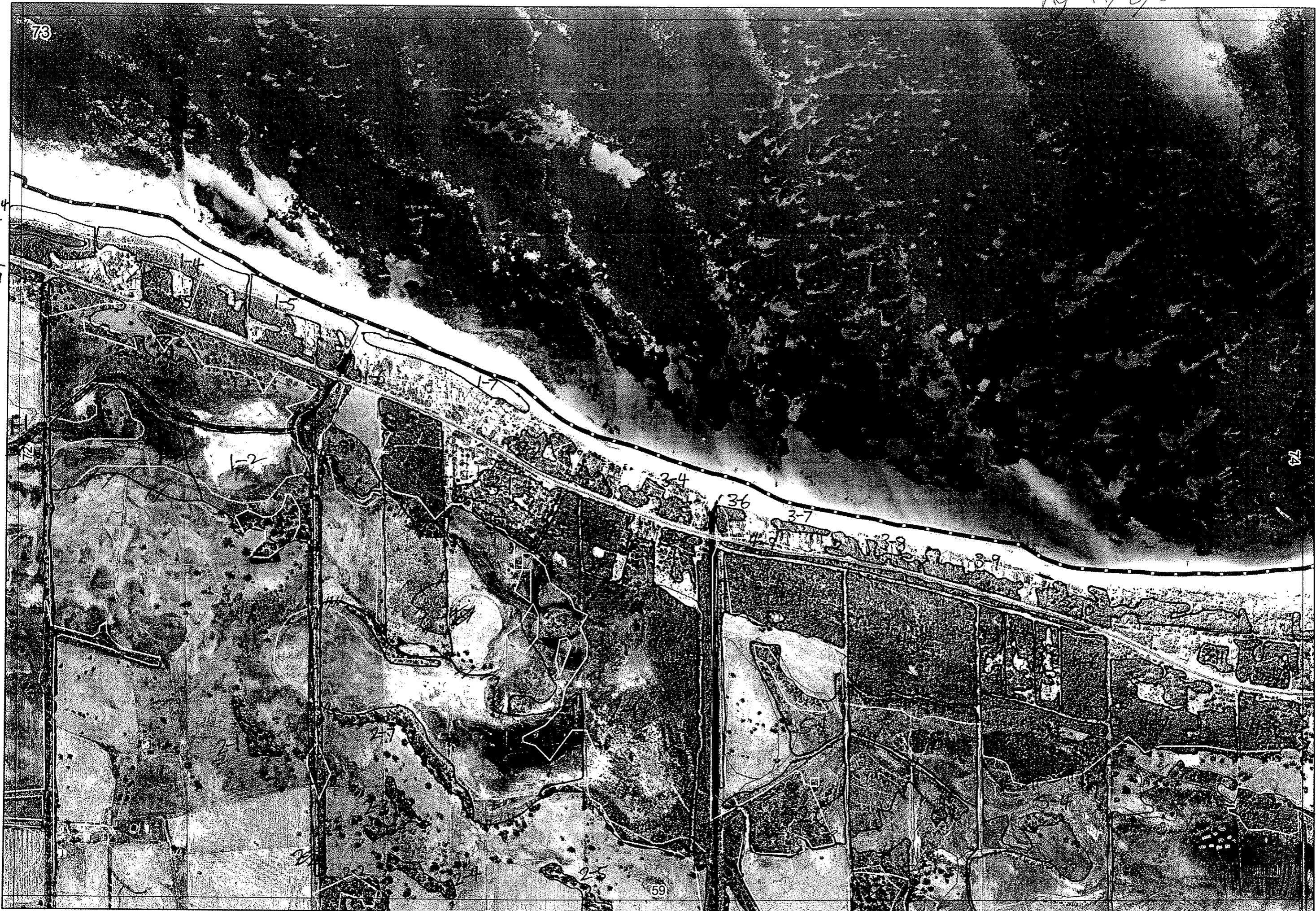
↓

↓ ↓
59/2-3

↓

↓

↓
59/5-1



59

1-2

2-4

3-6

3-7

1-4

1-5

4-7

2-5

2-8

2-9

2-10

2-11

2-12

2-13

2-14

2-15

2-16

2-17

2-18

2-19

2-20

2-21

2-22

2-23

2-24

2-25

2-26

2-27

2-28

2-29

2-30

2-31

2-32

2-33

2-34

2-35

2-36

2-37

2-38

2-39

2-40

2-41

2-42

2-43

2-44

2-45

2-46

2-47

2-48

2-49

2-50

2-51

2-52

2-53

2-54

2-55

2-56

2-57

2-58

2-59

2-60

2-61

2-62

2-63

2-64

2-65

2-66

2-67

2-68

2-69

2-70

2-71

2-72

2-73

2-74

2-75

2-76

2-77

2-78

2-79

2-80

2-81

2-82

2-83

2-84

2-85

2-86

2-87

2-88

2-89

2-90

2-91

2-92

2-93

2-94

2-95

2-96

2-97

2-98

2-99

2-100

2-101

2-102

2-103

2-104

2-105

2-106

2-107

2-108

2-109

2-110

2-111

2-112

2-113

2-114

2-115

2-116

2-117

2-118

2-119

2-120

2-121

2-122

2-123

2-124

2-125

2-126

2-127

2-128

2-129

2-130

2-131

2-132

2-133

2-134

2-135

2-136

2-137

2-138

2-139

2-140

2-141

2-142

2-143

2-144

2-145

2-146

2-147

2-148

2-149

2-150

2-151

2-152

2-153

2-154

2-155

2-156

2-157

2-158

2-159

2-160

2-161

2-162

2-163

2-164

2-165

2-166

2-167

2-168

2-169

2-170

2-171

2-172

2-173

2-174

2-175

2-176

2-177

2-178

2-179

2-180

2-181

2-182

2-183

2-184

2-185

2-186

2-187

2-188

2-189

2-190

2-191

2-192

2-193

2-194

2-195

2-196

2-197

2-198

2-199

2-200

2-201

2-202

2-203

2-204

2-205

2-206

2-207

2-208

2-209

2-210

2-211

2-212

2-213

2-214

2-215

2-216

2-217

2-218

2-219

2-220

2-221

2-222

2-223

2-224

2-225

2-226

2-227

2-228

2-229

2-230

2-231

2-232

2-233

2-234

2-235

2-236

2-237

2-238

2-239

2-240

2-241

2-242

2-243

2-244

2-245

2-246

2-247

2-248

2-249

2-250

2-251

2-252

2-253

2-254

2-255

2-256

2-257

2-258

2-259

2-260

2-261

2-262

2-263

2-264

2-265

2-266

2-267

2-268

2-269

2-270

2-271

2-272

2-273

2-274

2-275

2-276

2-277

2-278

2-279

2-280

2-281

2-282

2-283

2-284

2-285

2-286

2-287

2-288

2-289

2-290

2-291

2-292

2-293

R E M	RE M2	XM AP	LIN TYPE	L I N E A R	M L U	U N I T S	U P L A N D ?	W E T L A N D ?	V I S I T ?	DETAIL/ Area Name	VEG CON	Field date	OBS From	YNOTASS	D E T Y I S R E O D	COMMENTS	VEG STRU C/DENS	FCT	DOMINANTS		
																			1	2	3
x11	1	Y	channel	Y	Q	1	-	Y	N		00-0	dist	22/6		N		W		Eucrud	Melrha	
x12	2	-	-	-	Q	4	-	Y	Y		4.7	5/7	edge			Mellat, Hibern rabbit Ⓢ Agofle, Eucrud	H ① W ②		Sarcocornia ① Eucrud ②	Melrha ②	Melvim w Gahtri ③
x13	3	-	-	-	Q	3	Y	-	Y		3-7	5/7	edge			White-faced grey heron	W W		Agofle Melvim	Spygla Gahtri	Lepgla Melrha
x14	4	-	coast	B	Q	2	Y	-	Y		G	6/7	edge				H W HS		Agofle Acacia spp.	Spygla Coastal woods	Lepgla
x15	5	-	coast	B	Q	2	Y	-	Y		G	6/7	edge			Petargonium caputatum Utraria	W HS		Agofle Coastal woods	Spygla Acacia spp.	Lepgla
x16	6	-	-	-	Q	1	Y	-	Y		0-G	6/7	edge				W		Agofle	spygla	Lepgla
x17	7	-	coast	Y	Q	1	Y	-	Y							Same as coastal 1-5 sp	HS				
x18	8	-	-	-	Q	3	Y	Y	Y		3-7	5/7	edge				W W S		Agofle Melvim Junkra	Spygla Gahtri Gahtri	Lepgla Sarcocornia
x19	9	-	-	-	Q	3	Y	Y	Y		3	5/7	dist			Aust shelduck 2	W W		Agofle melrha	Spygla Gahtri	Lepgla
x21	1	-	-	-	S	1	-	Y	Y		5-3	5/7	dist				W		Eucrud	Melrha	
x22	2	Y	-	N	S	1	-	Y			5	5/7	edge				W		Eucrud	Agofle	Melrha
x23	3	-	-	-	Q	2	-	Y			5	5/7	dist				W ①		Eucrud ①	Agofle ①	Melrha w Junkra ②
x24	4	-	-	-	S/P	1	-	Y			5	5/7	dist				W		Eucrud	Agofle	Melrha

Summary/General Comments

P9

P10

2

4/7AW, EH

Map Sheet Number 73

Pre Field Recorder(s) AW

Field Recorder(s) _____

Swan Bioplan Vegetation Mapping Data

R E M	RE M2	XM AP	LIN TYPE	L I N E A R	M L U	U N I T S	U P L A N D ?	W E T L A N D ?	V I S I T ?	DETAIL/ Area Name	VEG CON	Field date 200 <u>0</u>	OBS From	YNOTASS	D E T V I S I O N R E Q D	COMMENTS	VEG STRU C/ DENS	FCT	DOMINANTS		
																			1	2	3
x25	y	-	-	-	S	1	-	y	y		5	5/7	v dist				W		Eucrud		
x26	-	-	-	-	Q	4	y	y	y		vg	6/7	edge	derial	Y		F		Agofle	Spiglo	Lepplo
																	W		Eucrud	Mel rhaph	
																	W		Melvin	Agofle, Spiglo, Lepplo	
																	H		Sarcocornia		
x27	-	estuarine	Y	Q	2	-	y	y			4.7	5/7	dist				W		Eucrud Melina	Caahri	
																Caravan PK					
x31	-	-	-	-	Q	1	y	-	y		D	6/7	edge				W		Agofle		
x32	-	-	-	-	Q	1	y	-	y		D-G	6/7	edge				W		Agofle	Spiglo	Lepplo
x33	-	-	-	-	Q	1	y	-	y		vg	6/7	edge				W		Agofle	Spiglo	Lepplo
x34	-	-	-	-	Q	1	y	-	y		D	6/7	edge				W		Agofle		
x35	-	-	-	-	Q	1	y	-	y		4.3	4/7	edge		N		W		Agofle	Spiglo	Lepplo
x36	-	-	-	-	Q	1	y	-			D	"	"				W				
x37	-	-	-	-							D-G	"	"				W				
x38	-	-	-	-							D-G	"	"				W				
x39	-	-	-	-							D-G	"	"				W				
x310	-	-	-	-					y		4.7	4/7	edge		N		W		Agofle	Spiglo	Lepplo
x311	-	-	-	-					y		4.7	4/7	edge		N		W		↓	↓	↓
x312	-	-	-	-	Q	1	y	-	y		4.7	4/7	edge		N		W		Agofle	Spiglo	

Summary/General Comments

3

4/7 AM, EH

Map Sheet Number 73

Pre Field Recorder(s) Aw

Field Recorder(s)

Swan Bioplan Vegetation Mapping Data

R E M	RE M2	XM AP	LIN TYPE	L I N E A R	M L U	U N I T S	U P L A N D ?	W E T L A N D ?	V I S I T ?	DETAIL/ Area Name	VEG CON	Field date 2006	OBS From	YNOTASS	D E T V I S I O N R E Q D	COMMENTS	VEG STRU C/ DENS	FCT	DOMINANTS		
																			1	2	3
X41	-	-	-	-	Q1	Y	-	Y			43	4/7	edge		N	Sacred Kingfisher	W		Agofle	Spuglo	
X42	-	-	-	-				Y			43	4/7	edge		N						
X43	-	-	-	-				Y			43	4/7	edge		N						
X44	-	-	-	-				Y			43	4/7	edge		N						
X45	-	-	-	-				Y			43	4/7	edge		N						
X46	-	-	-	-				Y			43	4/7	edge		N						
X47	-	-	-	-				Y			5	4/7	edge		N						
X48	Y	-	-	-	Q1	Y	-	Y			D	6/2	edge			not press, bank cut, poppy	W		Agofle	Aca lit	
X51	-	-	-	-	Q2	-	Y	Y			6-veg	4/7	dirt			juncus sedge layer	W		Eucrud	Mel rhaph.	
																	S		Junc sp.		
X52	-	-	-	-	Q4	-	Y	Y			G	6/7	dirt			Mel cut? layer	W		① Mel rhaph	Euc rudis	② melvum
																	H		② Sarcocornia?		
																	W		Eucrud		
																	W		Mel		
																	H		Sarcocornia		
																	W		Agofle		
																	W		Mel		
																	H		Sarcocornia		

Summary/General Comments

X49 N road Y Q1 Y N Y

veg. 6/7 edge

W Agoflex Spig glob lep glab