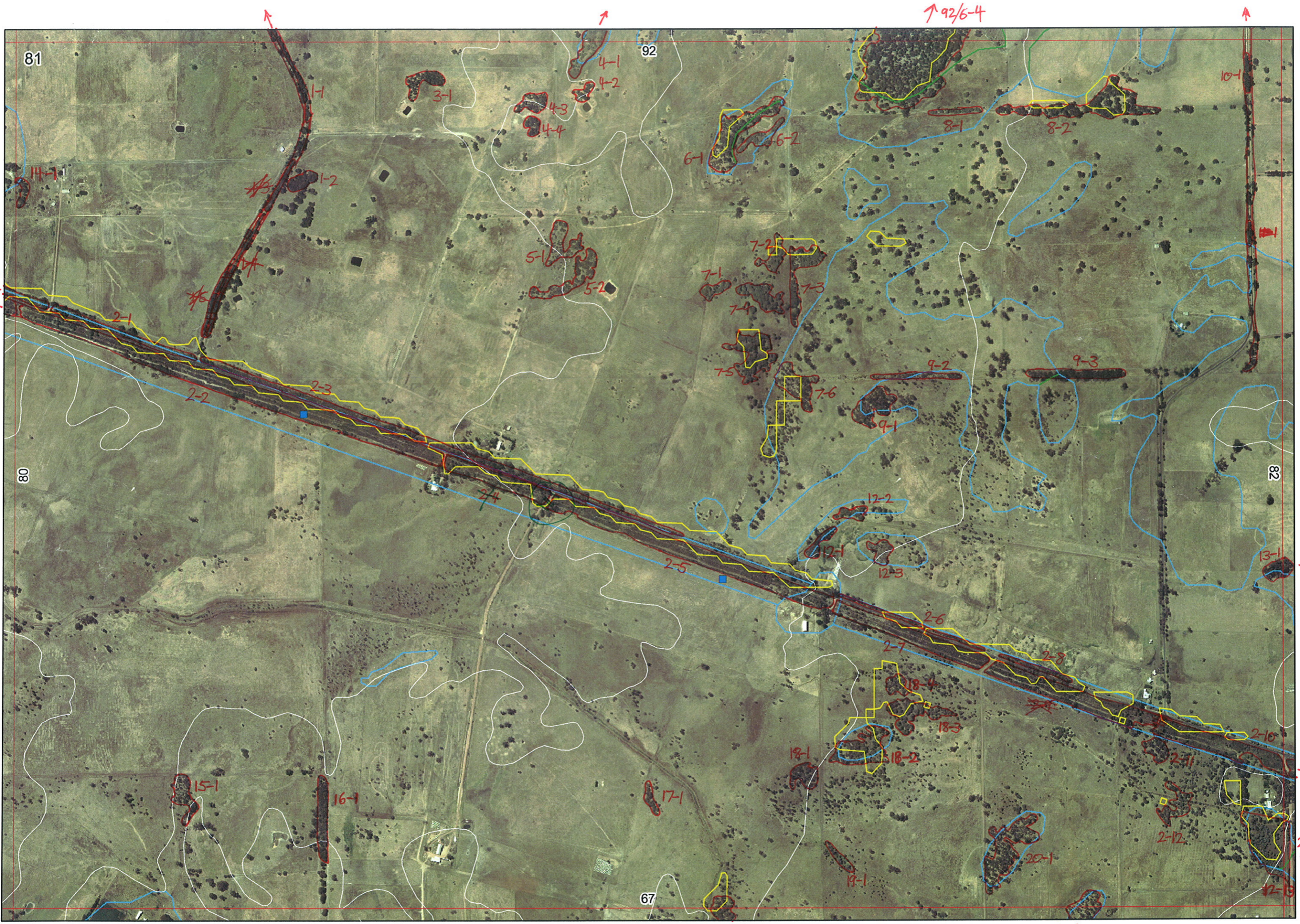


Ag



81

92

↑ 92/6-4

10-1

14-1

1-2

3-1

4-1

4-2

4-3

4-4

6-1

6-2

8-1

8-2

#5

#6

5-1

5-2

7-1

7-2

7-4

7-3

7-5

7-6

9-2

9-3

7-4

2-5

12-2

12-3

→

80

82

2-6

2-7

2-8

15-1

16-1

17-1

18-1

18-2

18-3

18-4

→ 82/1-2

2-11

2-12

→ 2-13

20-1

12-13

67

↓ 67/6-9

↓ 67/7-1

↓

peppi/manni - 0
92/ dist



30/3-9
10/3-7

Melucci

Melucci
Melucci

82/

2-13

67/

1

Map Sheet Number 81

Pre Field Recorder(s) A. Webb

Field Recorder(s) K.R./A.W.

Swan Bioplan Vegetation Mapping Data

R E M	R E M 2	X M A P	L I N E T Y P E	L I N E A R	M L U	U N I T S	U P L A N D ?	W E T L A N D ?	V I S I T ?	D E T A I L / A r e a N a m e	V E G C O N	F i e l d d a t e 200_	O B S F r o m	Y N O T A S S	D E T V I S R E Q D	C O M M E N T S	V E G S T R U C / D E N S	F C T	D O M I N A N T S		
																			1	2	3
X1	1	y	road	y	p	3	y	-	y		G-D	27/4	edge	-	N	F-Agoflex ³	F SC		Eucal Melunc	Kinaust Melunc	
	2				p	1			y								F		Agoflex	Eucal	
	3		road	y	p	1	y		-												
	4		road	y	p	1	y		-												
X1	2	-	road	y	p	1	y		-		CO-D	27/4	edge	-	N		F		Agoflex		
X2	1	-	road	y	p	2	y		N	Ruabon-Tut rd flora survey	G-VG	27/4			Y		F	1b	Eucmar	Eucal	Kinaus
																	HS	10a-?	Regal	Kunmic	Crediv
X2	2	-	road/rail	y	p	3	y	y	N	Ruabon-Tut rd flora survey	EX-VG	27/4	edge		Y		F	1b	Eucmar	Eucal	Kinaus
									N	"	EX-VG	"	"		Y	<i>Isoetes basifolius</i> ² <i>I. formosus ssp. donylopus</i>	SC	10a-?	Regal	C.sp. whicher	Crediv
									N	scp plot Wonn06	EX-VG	"	"		N	<i>Petrophile latericola</i> , <i>C. royeri</i> <i>Grass elongata</i> , <i>Dry nivea uliginosa</i>	HS	10b	<i>Dry squarrosa</i> <i>ssp. argillacea</i>	Kunmic	Perell
X2	3	-	road	y	p	3	y	y	N	Ruab-Tut rd flora survey	G-VG	27/4			Y		F	1b	Eucal	Eucmar	Kinaus
									N		EX	27/4			Y		SC	10a-?	Regal	C.sp. whicher	crediv
									N		EX	27/4			N		HS	10b	<i>Dry squarrosa</i> <i>ssp. argil</i>	Kunmic	Perell
X2	4	-	road/rail	y	p	1	y		N	Ruabon-Tut rd flora survey	G-VG				Y	<i>Grass elongata</i> , <i>Chamaecucumis royeri</i> <i>Calothamus sp. whicher</i>	W	1b	Eucal	Xanpre	Incorporate 2-4 Watsonia into 2-5
X2	5	-	road/rail	y	p	3	y	y	N	Ruabon-Tut rd flora survey Wonn05 - scp plot	EX-VG	27/4			N		TS	10a-?	Regal	Perell	Grediv - 2-4, not digitized by Ag
									N		G	27/4			N		W	21b	Agoflex	Eucmar	Eucal
X2	6	-	road	y	p	2	y	y	Y	Ruabon-Tut rd flora survey	G	27/4	edge	-	N		SC	10a-?	Regal	Grediv	
											G	27/4	"	"	N		W	1a	Agoflex	Melprei	

Summary/General Comments

2

R E M	R E M2	X M A P	L I N E T Y P E	L I N E A R	M L U	U N I T S	U P L A N D ?	W E T L A N D ?	V I S I T ?	D E T A I L / Area Name	V E G C O N	F i e l d d a t e 200_	O B S F r o m	Y N O T A S S	D E T A I L R E Q D	C O M M E N T S	V E G S T R U C / D E N S	F C T	D O M I N A N T S		
																			1	2	3
x27	-		road/rail	Y	P	2	Y	Y	N	Ruabon-Tut rd flora survey	D 43	27/4	edge	-	N	Petrophile latericola } Chromolaena } Kunmic	W	NA	Agoffe Eucal	Mel pres Xanpre	Nuyflo Phcit
									N	"	Ex-veg 27	"	"	-	Y		HS	10a-?	Regail	Grediv	Kunmic
x28	-		road	Y	P	1	Y	-	Y	"	CD- D	27/4	edge		N		F		Eucal	Eucal	
x210	-		road/rail	Y	P	2	Y	Y	N	"	S				N		W	1b	Eucal	Nuyflo	Xanpre
									N						N		SH	10b	Melinc	Kunmic	Lox mag
									N						Y		W/HS	1b+	Eucal	mixed dense shrubs	
210	-		road/rail	Y	P	2	Y	Y	N	"		27/4	edge	-	N	PSS	W	1b	Eucal	Nuyflo	Vinjua
									N			27/4	edge	-	N		HS	10b	Grediv	Kunmic	Lox mag
x211	-				P	1	N	Y	Y		CD-D	27/4	dist	-	N		F		Melrha		
x212	-				P	1	N	Y	Y		CD-D	27/4	dist	-	N		F		Melrha		
x31	-				P	1	Y	N	Y		CD-D	27/4	dist	-	N		F		Eucal		
x41	Y				P	1	-	Y													
x42	-				P	1	Y	-			CD-D	27/4	aerial	Av			F		Eucal		
x43	-				P	1	Y	-													
x44	-				P	1	Y	-													
x51	-				P	1	Y	-			CD-D	27/4	dist	-	N		F		Eucal		
x52	-				P	1	Y	N			"	"	"	"	"		F		Eucal		
x61	-				P	1	Y	-			CD-D	28	dist				F		Eucal		

2-10 has become 2-10+2-9

2-9 not entered
✓ confusing
SPT.

Need an entry for 2-9

PSS

over dense vegetation

Delete 4-2 to 4-4 not digitized by Ag

Summary/General Comments

3

Map Sheet Number 81

Pre Field Recorder(s) A. Webb

Field Recorder(s) 28/4 = BK/AW
27/4 = AW/RC/RC

Swan Bioplan Vegetation Mapping Data

R E M	R E M 2	X M A P	L I N E A R	L I N E A R	M L U	U N I T S	U P L A N D ?	W E T L A N D ?	V I S I T ?	D E T A I L /	V E G C O N	F i e l d d a t e	O B S F r o m	Y N O T A S S	D E T A I L R E Q D	C O M M E N T S	V E G S T R U C /	F C T	D O M I N A N T S			
																			1	2	3	
x6	2	-	-	-	P	1	Y	N			CD-D	28	dist				W		Eucal			
x7	1	-	-	-	P	1	-	Y	}		CD-D	27/4	dist	-	N	Eucal present	F		Melrha	Eucrud		
x7	2	-	-	-	P	1	-	Y										F		"	"	
x7	3	-	-	-	P	1	-	Y										F		"	"	
x7	4	-	-	-	P	1	-	Y										F		"	"	
x7	5	-	-	-	P	1	-	Y										F		"	"	
x7	6	-	-	-	P	1	Y	-										F		Eucal	"	
x8	1	-	road	Y	P	1	Y	N			CD-D		dist		N		F		Eucal			
x8	2	-	road	Y	P	1	Y	-			CD-D	28	dist		N		F		Eucal			
x9	1	-	-	-	P	1	Y	-			CD-D	27/4	dist	-	N		F		Eucal			
x9	2	-	road	Y	P	1	Y	-			CD-D	"	"	-	N		F		Eucal			
x9	3	-	road	Y	P	1	Y	-			CD-D	27/4	dist	-	N		F		Eucal			
x10	1	-	road	Y	P	3	Y	-			D	28/4	Trans	-	N	scat. Mel pre	SH F		Xanthpre EUCAL	HakVoria	Kingcust	
x11	1	-	road	Y	P	1	Y	-			D	28/4	Trans			scat. Mel pre	SH F W		Mel pre Eucal			
x12	1	-	-	-	P	1	N	Y			CD-D	27/4	dist	-	N		F		Melrha			
x12	2	-	-	-	P	1	N	Y			CD-D	"	"	"	"		F		Melrha			
x12	3	-	-	-	P	1	Y	-			"	"	"	"	N	Dead Eucmar	F		Agoflex	Melpre		
x13	1	Y	-	-	P	1	Y	-			CD-D	27/4	dist		N		F		Eucal			

Delete 12-1 to 12-3 Not digitized by Ag

Summary/General Comments

4

Map Sheet Number 81

Pre Field Recorder(s) A. Webb

Field Recorder(s)

Swan Bioplan Vegetation Mapping Data

R E M	RE M2	XM AP	LIN TYPE	L I N E A R	M L U	U N I T S	U P L A N D ?	W E T L A N D ?	V I S I T ?	DETAIL/ Area Name	VEG CON	Field date 200_	OBS From	YNOTASS	D E T V I S R E Q D	COMMENTS	VEG STRUC/ DENS	FCT	DOMINANTS		
																			1	2	3
X14	1	-	-	-	P	1	Y	-			CD-D	27/4	dist	-	N		F		Agoflex		
15	1	-	-	-	P	1	-	Y		Do by aerial						?	F		Eucrud	Meltha	
16	1	-	fence	Y	P	1	Y	-		Do by aerial											
X17	1	-	-	-	P	1	-	Y			CD-D	27/4	dist	-	N		F		Meltha	Eucrud	
X18	1	-	-	-	P	1	Y	Y			CD-D	27/4	dist	-	N		F		Eucrud		
X18	2	-	-	-	P	1	Y	Y			CD-D	"	"	-	N		F		Meltha	Eucrud	
X18	3	-	-	-	P	1	Y	Y			CD-D	"	"	-	N		"		"	"	
X18	4	-	-	-	P	1	Y	Y			CD-D	"	"	-	N		"		"	"	
X19	1	-	-	-	P	1	-	Y			CD-D	"	"	-	N		"		"	"	
X20	1	-	-	-	P	1	Y	-			CD-D	27/4	dist	-	N		F		Eucrud		
X2	13	Y	-	-	P	2	-	Y			VEG G	27/4	edge		N	Road verge VEG, paddock RD Spp List, Ironstone, PS7	SC F	9	Melinc Mel pres	Grevdiv Eucrud	

Summary/General Comments