



Ag

85

96

70

86

70/1-1

70/1-2

70/1-5

86/5-7

86/5-5

I-1

I-2

I-3

I-4

I-5

I-6

I-7

I-8

I-9

I-10

I-11

I-12

I-13

I-14

I-15

I-16

I-17

I-18

I-19

I-20

I-21

I-22

I-23

I-24

I-25

I-26

I-27

I-28

I-29

I-30

I-31

I-32

I-33

I-34

I-35

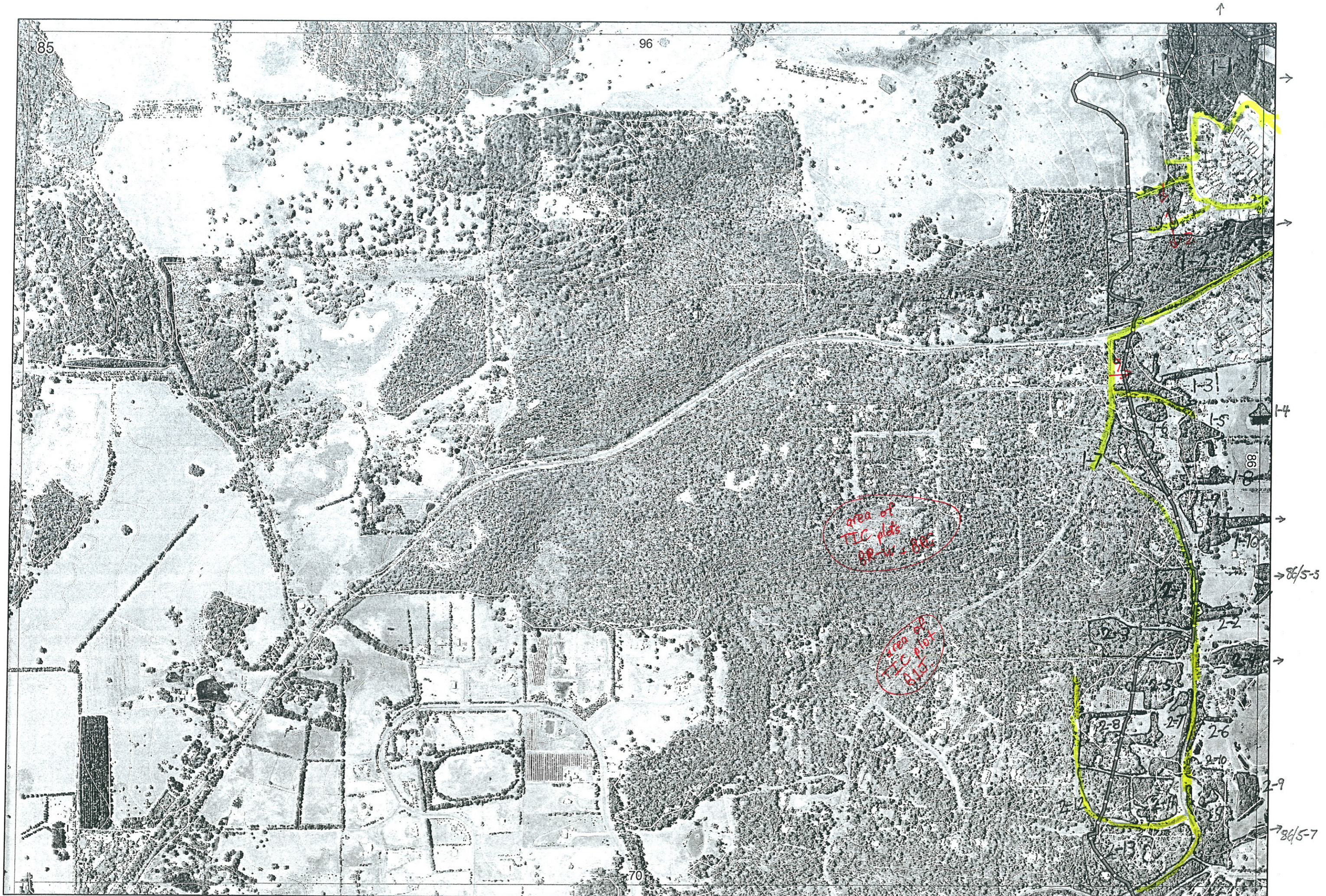
I-36

I-37

I-38

I-39

I-40



85

96

70

area of TIC plots BR-12 & BR-13

area of TIC plot 810

70/1-1

70/1-2

70/1-5

86/5-5

86/5-7

1-4

1-10

2-2

2-3

2-5

2-7

2-8

2-10

2-13

1-1

1-2

1-3

1-4

1-5

1-6

1-7

1-8

1-9

1-10

1-11

1-12

1-13

1-14

1-15

1-16

1-17

1-18

1-19

1-20

1-21

1-22

1-23

1-24

1-25

1-26

1-27

1-28

1-29

1-30

1-31

1-32

1-33

1-34

1-35

1-36

1-37

1-38

1-39

1-40

1-41

1-42

1-43

1-44

1-45

1-46

1-47

1-48

1-49

1-50

1-51

1-52

1-53

1-54

1-55

1-56

1-57

1-58

1-59

1-60

1-61

1-62

1-63

1-64

1-65

1-66

1-67

1-68

1-69

1-70

1-71

1-72

1-73

1-74

1-75

1-76

1-77

1-78

1-79

1-80

1-81

1-82

1-83

1-84

1-85

1-86

1-87

1-88

1-89

1-90

1-91

1-92

1-93

1-94

1-95

1-96

1-97

1-98

1-99

1-100

1-101

1-102

1-103

1-104

1-105

1-106

1-107

1-108

1-109

1-110

1-111

1-112

1-113

1-114

1-115

1-116

1-117

1-118

1-119

1-120

1-121

1-122

1-123

1-124

1-125

1-126

1-127

1-128

1-129

1-130

1-131

1-132

1-133

1-134

1-135

1-136

1-137

1-138

1-139

1-140

1-141

1-142

1-143

1-144

1-145

1-146

1-147

1-148

1-149

1-150

1-151

1-152

1-153

1-154

1-155

1-156

1-157

1-158

1-159

1-160

1-161

1-162

1-163

1-164

1-165

1-166

1-167

1-168

1-169

1-170

1-171

1-172

1-173

1-174

1-175

1-176

1-177

1-178

1-179

1-180

1-181

1-182

1-183

1-184

1-185

1-186

1-187

1-188

1-189

1-190

1-191

1-192

1-193

1-194

1-195

1-196

1-197

1-198

1-199

1-200

1-201

1-202

1-203

1-204

1-205

1-206

1-207

1-208

1-209

1-210

1-211

1-212

1-213

1-214

1-215

1-216

1-217

1-218

1-219

1-220

1-221

1-222

1-223

1-224

1-225

1-226

1-227

1-228

1-229

1-230

1-231

1-232

1-233

1-234

1-235

1-236

1-237

1-238

1-239

1-240

1-241

1-242

1-243

1-244

1-245

1-246

1-247

1-248

1-249

1-250

1-251

1-252

1-253

1-254

1-255

1-256

1-257

1-258

1-259

1-260

1-261

1-262

1-263

1-264

1-265

1-266

1-267

1-268

1-269

1-270

1-271

1-272

1-273

1-274

1-275

1-276

1-277

1-278

1-279

1-280

1-281

1-282

1-283

1-284

1-285

1-286

1-287

1-288

1-289

1-290

1-291

1-292

1-293

1-294

1-295

1-296

1

Map Sheet Number 85

Pre Field Recorder(s) AW

Field Recorder(s) AW, EH, Richard Clark

Swan Bioplan Vegetation Mapping Data

R E M	RE M2	XM AP	LIN TYPE	L I N E A R	M L U	U N I T S	U P L A N D ?	W E T L A N D ?	V I S I T ?	DETAIL/ Area Name	VEG CON	Field date	OBS From	YNOTASS	D E T Y I S R E Q D	COMMENTS	VEG STRU C/DENS	FCT	DOMINANTS		
																			1	2	3
X1	1	Y	-	-	P/S	3	Y	Y	Y		W VL	20/6	edge		Y		F		Melrha	Agofle	
																Dashoo	F		Euccal	Agofle	Bangra
																Dashoo, Shilat	F	21b	Banatt	Allfra	Eucmar
																	F				
																	F		Agofle	Euccal	
X1	2	Y	channel	B	WS/S	3	Y	Y	Y		3	20/6	edge				F		Agofle	Euccal	
												20/6	within				F	3b	Euccal	Agofle	Eucmar
																	F		Banatt	Allfra	Eucmar
																	F		Eucmar	Euccal	
X1	3	-	-	-	WS	1	Y	-	Y		3.3	20/6	within			species list - AW WRP scale? BTP scale?	F		Eucmar	Euccal	
X1	4	Y	-	-	P	1	-	Y	N		5	20/6	aerial				F		Melrha		
X1	5	-	-	-	WS/S	1	Y	-	Y		4.7	20/6	aerial/ dist				F		Euccal	Eucmar	
X1	6	-	-	-	WS	1	Y	-	N		3.3	20/6	aerial			same as 1-3	F		Eucmar	Euccal	
X1	7	-	-	-	WS/MS	1	Y	-	Y		3.3	20/6	edge			same as 1-3 Xyloc, Haktri	F		Eucmar	Euccal	
X1	8	-	-	-	WS	1	Y	-	N		4.7	20/6	aerial			same as 1-5 plantings	F				
X1	9	-	-	-	WS	1	Y	-	Y								F				
X1	10	Y	fence	B	S	1	Y	-	Y		5	20/6	edge				F		Euccal	Agofle	
X2	1	-	-	-	MS	1	Y	-	Y		3.3	20/6	edge			same as 1-3	F		Eucmar	Euccal	
X2	2	-	channel	Y	S	1	Y	-	Y		5	20/6	edge			plantings some	F		Agofle	Euccal	
X2	3	-	-	-	MS/WS	1	Y	-	Y		3.3	20/6	edge			same as 1-3	F		Eucmar	Euccal	

Photo ②  
Photo ⑥

Summary/General Comments

2

Map Sheet Number 85

Pre Field Recorder(s) AW

Field Recorder(s) AW, E.H. Richards

Swan Bioplan Vegetation Mapping Data

R E M	RE M2	XM AP	LIN TYPE	L I N E A R	M L U	U N I T S	U P L A N D ?	W E T L A N D ?	V I S I T ?	DETAIL/ Area Name	VEG CON	Field date	OBS From	YNOTASS	D E T V I S R E Q D	COMMENTS	VEG STRU C/DENS	FCT	DOMINANTS		
																			1	2	3
X24	Y	-	-	S	1	Y	-	Y			5.7	20/6	edge			Xyloc	F		Agofle	Eucal	
X25	-	-	-	WS	1	Y	-	Y			5	20/6	edge				F		Agofle	Eucal	
26	-	road	Y	WS	1	Y	-	Y								Plantings	F				
X27	-	road	Y	WS	1	Y	-	Y			5	20/6	edge			plantings along road	F		Agofle	Eucal	
X28	-	-	-	WS /MS	1	Y	-	Y			3	20/6	edge/ aerial	AW		mostly plantings front edge same as 2-12	F		Eucmar	Banatt	Agofle
X29	Y	-	-	P	1	Y	-	Y			5.3	20/6	edge				F		Agofle	Eucal	
X210	-	-	-	WS	1	Y	-	Y			5	20/6	dist				F		Agofle	Eucal	
X211	-	-	-	WS	1	Y	-	Y			5	20/6	edge				F		Agofle		
X212	-	-	-	WS /MS	1	Y	-	Y			3	20/6	edge			Kingia, Allfra	F		Eucmar	Banatt	Agofle
X213	Y	-	-	WS	2	Y	-	Y			2.7	20/6	edge			Sandy soils	F		Eucmar	Banatt	Agofle
																Bossia aquatolium same as 1-3	F		Eucmar	Eucal	

Summary/General Comments