

88

W
W



77

88

←

↓

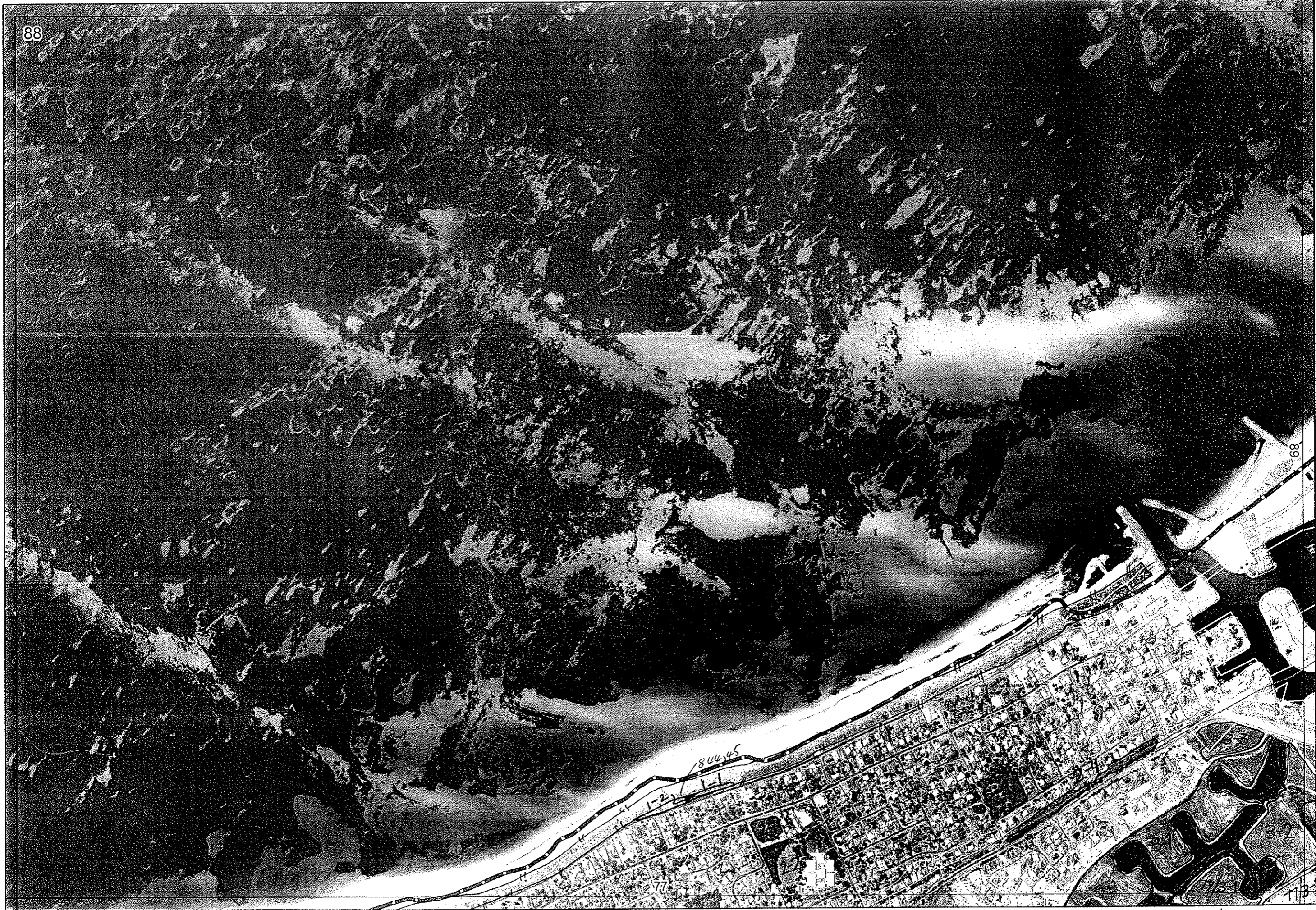
↓

→

→

→

→





R E M	R E M2	X M A P	L I N E T Y P E	L I N E A R	M L U	U N I T S	U P L A N D ?	W E T L A N D ?	V I S I T ?	D E T A I L A r e a N a m e	V E G C O N	F i e l d d a t e 2 0 0	O B S F r o m	Y N O T A S S	D E T V I S I O N R E Q D	C O M M E N T S	V E G S T R U C T U R E / D E N S	F C T	D O M I N A N T S		
																			1	2	3
1	1	Y	coast	Y	Q	1	Y	-			6	CD	25/5	Within	N	Shrub at Port Geoprepho reveg. Scattered locals	Sh		Weeds	Delete 8-1 BJK Field decision	
2	1	-	-	-	Q	1	Y	-			33	VG-G	25/5	E	N	= Wilcott Park (F		peppi		
2	2	-	-	-	Q	1	Y	-			5	D	25/5	E	N		F		peppi		
2	3	-	-	-	Q	1	Y	-			6	CD	25/5	Within	N	= 1-2 Wilcott Park Map 77 + Soliya, Leucopogon proquum	F		peppi		
2	4	-	-	-	Q	1	Y	-											peppi	Lepido gladiatum	
3	1	Y	-	-	Q	1	-	Y											Holosarcia	Sarcocornia	
3	2	Y	-	-	Q	1	-	Y											"	"	
3	3	-	-	-	Q	1	-	Y											"	"	
1	2	N	coastal	Y	C	1	Y				5	D	25/5	Within	N	Quandong, Ficinia, Acenthocarpus Scaevola	Sh		Ac. coch.		

839-841

Summary/General Comments

cross-overs - 77/3-1
77/3-2