



→ 91 Sent to Ag 1/9/06

→ 99/6-10

→ 99/3-1

39/2-2
9/5-2

39/2-5

89/4-1

89/4-4

89/4-3

79/1-1

79/2-7

79/10-1

on sheet 91/1-1
91/1-3

→ 91/6-1

90

89

89

90

3-6

5-2

3-3

4-5

4-5

6-1

6-2

79

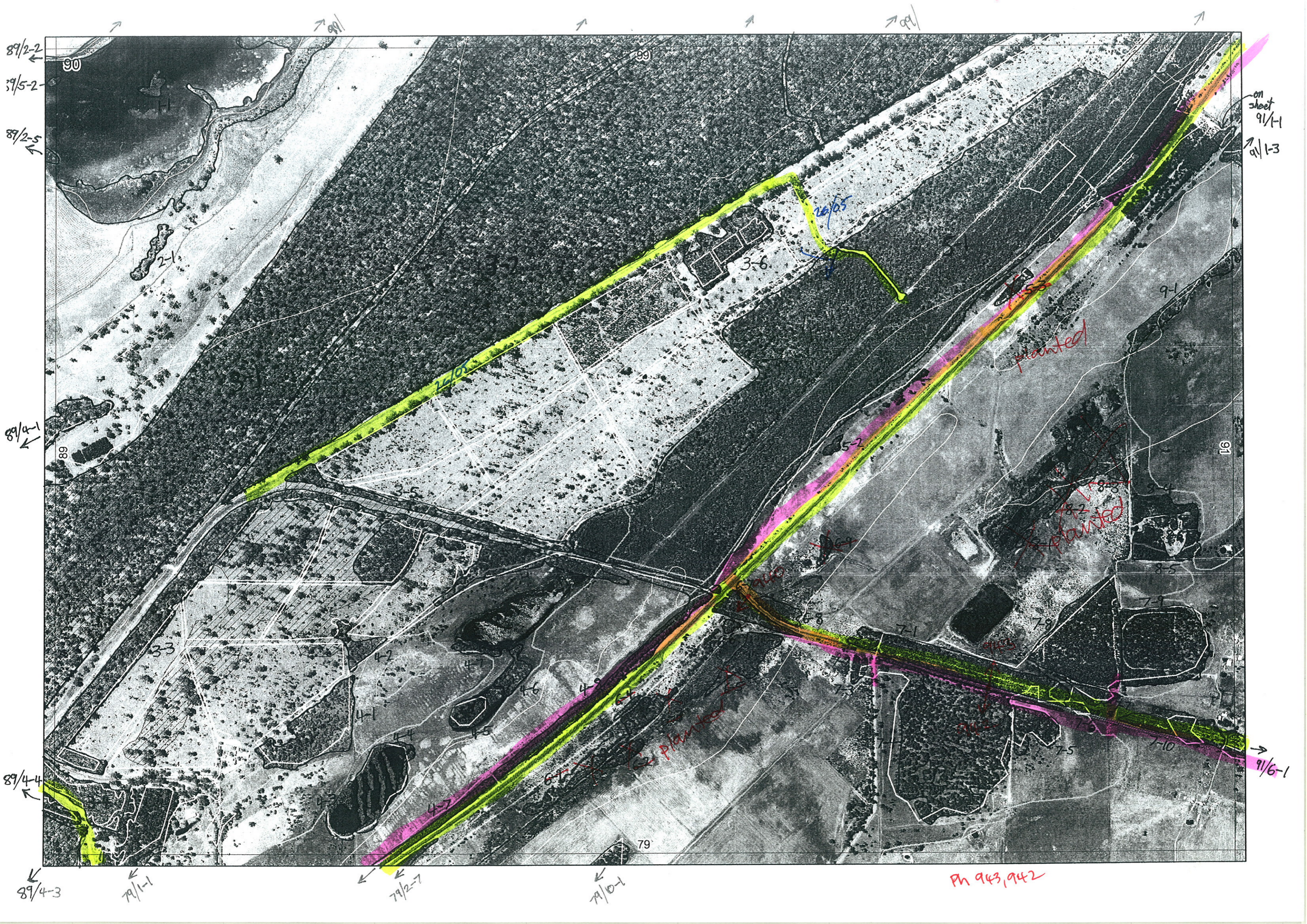
9-1

7-2

7-3

5

10



89/2-2
89/5-2
89/2-5

89/4-1

89/4-4

89/4-3

79/1-1

79/2-7

79/0-1

on sheet
91/1-1
91/1-3

91/6-1

PH 943, 942

planted

planted

planted

26/05

26/05

1

Map Sheet Number 90

Pre Field Recorder(s) A. Walsh

Field Recorder(s) AN, PCC

Swan Bioplan Vegetation Mapping Data

R E M	R E M 2	X M A P	L I N E T Y P E	L I N E A R	M L U	U N I T S	U P L A N D ?	W E T L A N D ?	V I S I T ?	D E T A I L A r e a N a m e	V E G C O N	F i e l d d a t e 200_	O B S F r o m	Y N O T A S S	D E T V I S R E Q D	C O M M E N T S	V E G S T R U C / D E N S	F C T	D O M I N A N T S			
																			1	2	3	
1	1	-	-	-	Q	1	-	Y												Halesauca	Sarcocolla	
2	1	-	channel	Y	Q	1	-	Y			D									Mel		
3	1	Y	-	-	S	1	Y	-		Ludlow Tuart forest	D					WFS - Tuart report				Tuart	Peppi	
3	2	Y	-	-	S	1	Y	-		"	D					"				Tuart	Peppi	
3	3	Y	fence	B	S	2	Y	Y		"	D					"				Tuart	Peppi	
																				Melvim		
3	4	Y	-	-	S	1	Y	-		"	D					"				Tuart	Peppi	
3	5	-	fence	Y	S	2	Y	Y		"	D					"				Tuart	Peppi	
																				Melvim		
3	6	-	-	-	S	1	Y	-		"						" planted -??				Tuart		
4	1	-	-	-	S	2	Y	Y												Tuart		
																				Melvim		
4	2	-	-	-	S	2	Y	Y			D									Tuart		
																				Melvim		
4	3	-	-	-	S	1	-	Y												Mel		
4	4	-	-	-	S	1	-	Y												"		
4	5	-	-	-	S	1	-	Y												"		
4	6	-	-	-	S	1	-	Y												"		

Summary/General Comments

2

Map Sheet Number 90

Pre Field Recorder(s) A. Webb

Field Recorder(s)

Swan Bioplan Vegetation Mapping Data

R E M	RE M2	XM AP	LIN TYPE	L I N E A R	M L U	U N I T S	U P L A N D ?	W E T L A N D ?	V I S I T ?	DETAIL/ Area Name	VEG CON	Field date 200_	OBS From	YNOTASS	D E T V I S R E Q D	COMMENTS	VEG STRU C/ DENS	FCT	DOMINANTS		
																			1	2	3
x	47	-	-	-	S	2	Y	Y			D	12/4	edge				S		Mel unc	Mel vim	Mel lat
x	48	-	road	Y	P	1	Y	-			CD-D	12/4	edge			Abba	F		Mami	Peppi	
	49	-	-	N	P	1	N	Y		Misnumbered as duplicate of 47 originally											
✓	51	Y	-	-	S/p	4	Y	Y		Ludlow Tuart forest WFS report	E					Apenogaton hemipetalis, Schoenus natus Trichlecline sp. Treton, Euc rudis ssp. cratyantha					
x	52	-	-	-	P	1	Y	N			D	12/4	dist				W		Peppi	Mami	
x	53	-	-	-	P	1	Y	-				12/4	edge		planted						
✓	61	-	fence	Y	P	1	Y	-			CD	12/4	edge			planted					
x	62	-	"	Y	P	1	Y	-			"	"	"			"					Delete 6-1 to 6-5 - planted
x	63	-	"	Y	P	1	Y	-			"	"	"			"					
x	64	-	"	Y	P	1	Y	-			"	"	"			"					
x	65	-	-	-	P	1	Y	-								"					
✓	66	-	-	-	P	1	Y	-			D	12/4	edge				S		Mel rha	Mel vim	Euc rud
x	67	-	-	-	P	2	Y	Y			D-CD	"	edge				S		Mel rha	Mel pcei	Kun glab
x	68	-	-	-	P	1	Y	-			D	12/4	edge				F	1b	Mami	Jawal	Kun glab
x	69	-	-	-	P	1	Y	-			CD	12/4	dist		planted						
x	71	-	road	Y	P	2	Y	-	N	Vent. attenuata	EX	12/4	edge	Y	see Reason Comm 12 - on Rudon-Tut floor survey		F	21b+	Eucmor	Eucal	Banatt
✓								N	Conospermum taetifolium	G-D	"	"		N	"		W	21b	Peppi	Banatt	Kun ala
x	72	-	-	-	P	1	Y	-			D	12/4	edge				F		Mami	Kun glab	

Summary/General Comments

Ph 940

photo 943

3

Map Sheet Number 90

Pre Field Recorder(s) A. Webb

Field Recorder(s) AW, BR

Swan Bioplan Vegetation Mapping Data

R E M	RE M2	XM AP	LIN TYPE	L I N E A R	M L U	U N I T S	U P L A N D ?	W E T L A N D ?	V I S I T ?	DETAIL/ Area Name	VEG CON	Field date 200_	OBS From	YNOTASS	D E T V I S R E Q D	COMMENTS	VEG STRUC/ DENS	FCT	DOMINANTS		
																			1	2	3
x	73	-	-	-	P	1	Y	-			D	12/4	edge	-		Same as 7-2	F		Manni	Kun q lab	
x	74	-	-	-	P	1	Y	-	N		G	12/4	edge	-		Same community as J/M/8. atten in 7-1, but heavily grazed	F	21b	Banatt	Eucmar	Banill
x	75	-	-	-	P	1	Y	-	N		CD-D	12/4	edge			"	F	21b	"	"	"
x	76	-	-	-	P	1	-	Y	N		D-CD	12/4	edge				F	2	Melpre	Banlit	Manni
x	77	-	-	-	P	1	-	Y			D	12/4	edge				F	xover	Melpre	Banlit	Peppi
x	78	-	-	-	P	2	Y	Y			P	12/4	dist				F	-	Manni	Pepp	
x											D	12/4	dist				W	21b	Kungla	Eucmar	Banatt
x	79	-	-	-	P	2	Y	-			D	12/4	dist				F	-	Manni	Pepp	
x											D	12/4	dist				W	21b	Eucal	Kun q lab	Ban att
x	710	-	road rail	-	P	2	Y	Y	N	Vent. attenuata, Petriophila medea Iso forficatus ssp. dasylopius Syn. petiolaris ssp. simplex	3-7	12/4	edge	Y	See Rudon comm 11 - in Rud-Tut flora survey	HS	10a	Melunc	Kunmic	Hobvar	
x											4-7	"	"		See Rudon comm 8 - in Rudon-Tut flora survey. Haben. serotopylla	W	1b	Eucal	Eucmar	Xanthom pre	
x	81	-	-	-	P	1	-	Y			CD	12/4	dist		I planted						
x	82	-	-	-	P	1	-	Y			CD	"	"		"						
x	83	-	-	-	P	1	Y	-			CD	"	"		"						
x	84	-	-	-	P	1	Y	-			D	12/4	dist				F	-	Manni Jarrah	Peppi Kungla	Ban att
x	85	-	-	-	P	1	Y	-			D	12/4	"						"	"	
x	86	-	-	-	P	1	Y	-			D	12/4	"						"	"	
x	91	Y	fence	Y	P	1	Y	-			D	12/4	dist				F	21b	Manni	Ban att	

Ph 942

delete
81 to 8-3
planted.

Summary/General Comments