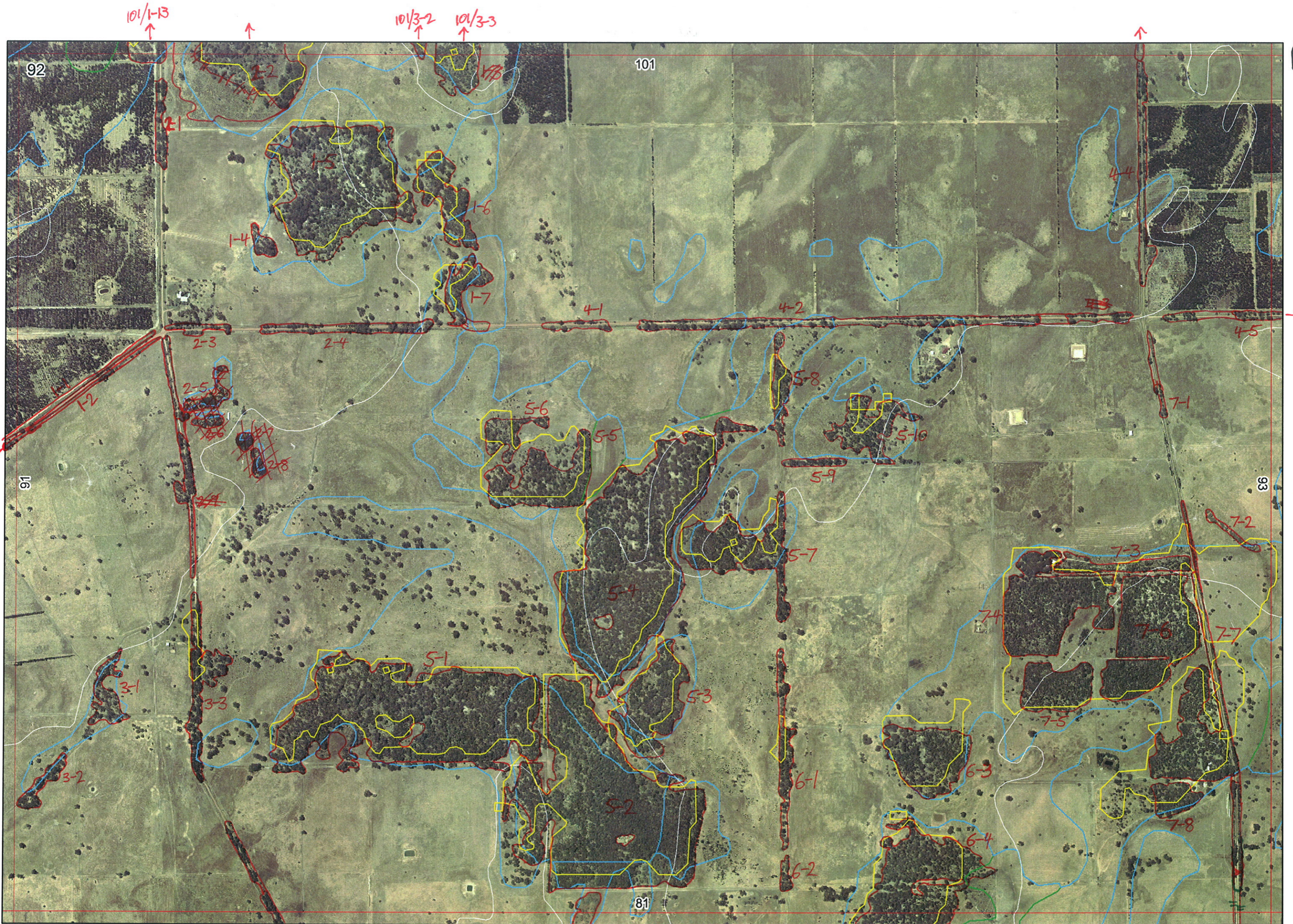


Ag



101/1-13 ↑

101/3-2 ↑
101/3-3 ↑

92

101

91

93

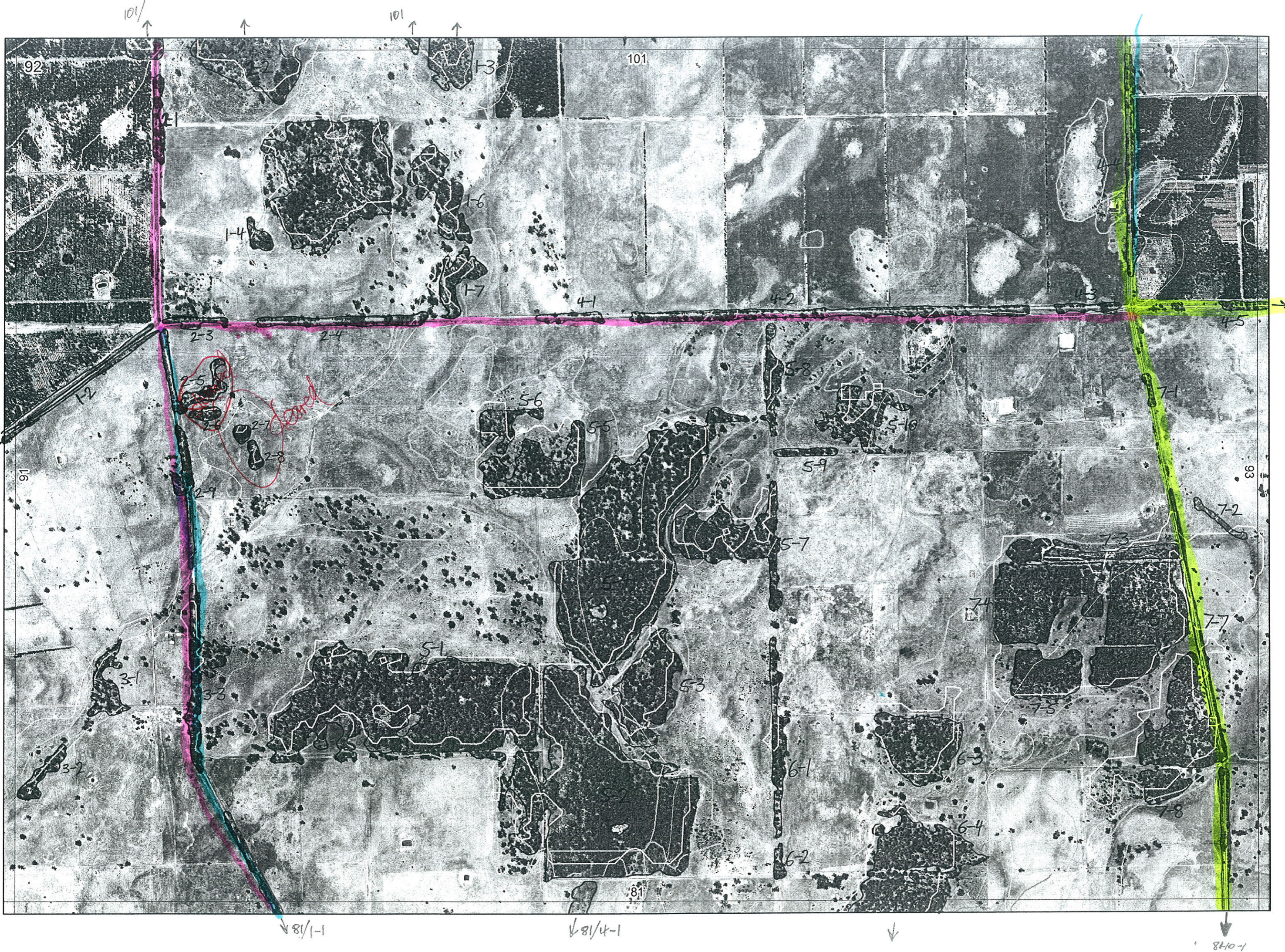
81

81/1-1 ↓

81/4-1 ↓

↓

81/10-1 ↓ ✓



REM	RE M2	XM AP	LIN TYPE	LINEAR	MLU	UNITS	UPLAND?	WETLAND?	VISIT?	DETAIL/ Area Name	VEG CON	Field date 200_	OBS From	YNOTASS	DET VISREQD	COMMENTS	VEG STRUC/DENS	FCT	DOMINANTS		
																			1	2	3
x1	1	y	road	y	B/p	3	y	y	y		D/G	28/4	tronic	N	Scattered Kinans, analoe	SH	-	Kinanic	Hypang		
																F	-	Eucal			
																SH	4	Melpre	Melthy	Xangre	
>1	2	-	road	y	B/p	3	y	y	y	same as 1-1											
1	3	y	-	-	P	1	-	y	-								W				
1	4	-	-	-	P	1	y	-	-		D/CD	2/8	dist	N		F		Eucal			
1	5	-	-	-	P	2	y	-	-		D	2/8	dist	N	3rd Com Eucal	W		Eucal	Banatt	Eucmar	
																W					
1	6	-	-	-	P	1	y	-	-		D/CD	2/8	edge	N		F		Eucal			
1	7	-	-	-	P	1	y	-	-		D/CD	2/8	edge	N	Aca. ulova	SH		Mellat	Eucal	Eucmar	
1	21	-	road	y	P	1	y	-	-		D/CD	2/8	edge	N		F		Eucal			
1	22	y	-	-	P	4	y	-	-		D/G	2/8	dist	N	3rd community Melpre	W		Eucal		KOCMAJ	
1	23	-	road	y	P	2	y	-	-		D/G	2/8	edge	N	4th Melrha Banlit Nelter(W)	HS		Xanbr		Kinans	
1	24	-	road	y	P	1	y	-	-		D/CD	2/8	edge	N	Aca. paradisa	W		Eucal			
1	25	-	road	y	P	3	-	y	-		D/CD	2/8	edge	N	Podalygia xerola	W		Melpre		Melvin	
1	26	-	-	-	P	1	-	y	-						3rd com Mellat var acw Melunc PLP	W		Eucal		Eucmar	
1	27	-	-	-	P	1	-	y	-						Aca. paradisa	SH		Hypang		Melthy	
1	28	-	-	-	P	1	-	y	-						Eucmar Jacspa Melpre	SH				Xangre	
															cleared	SH					
															cleared	SH					
															cleared	SH					

Summary/General Comments

2

Max 24/3

Map Sheet Number 92

Pre Field Recorder(s) ALW

Field Recorder(s)

Swan Bioplan Vegetation Mapping Data

Link to 2-5

Link to 4-3

R E M	R E M 2	X M A P	L I N E TYPE	L I N E A R	M L U	U N I T S	U P L A N D ?	W E T L A N D ?	V I S I T ?	DETAIL/ Area Name	V E G C O N	Field date 200_	O B S From	Y N O T A S S	D E T V I S R E Q D	C O M M E N T S	V E G S T R U C / D E N S	F C T	D O M I N A N T S		
																			1	2	3
29			road	Y	P	2	Y	Y									F				
31					P	1	Y				0/0	2/8	edge		N		W				
32					P	1	Y				0/0	2/8	dist		N	Aca pasidoka	F				
33			road	Y	P	1	Y				D	2/8	edge				F				
41			road	Y	P	1	Y				0/0	2/8	edge		N		W				
42			road	Y	P	2	Y				0/0	2/8	edge		N	Hakser Melika melpre Aca (tan Vert (construc house))	F				
43			road	Y	P	1	Y										F				
X44			road	Y	P	3	Y	Y			G-D	14/6	trans		N	Aca flg sp list Melibit con	F				
X45	Y		road	Y	P	2	Y	Y			0-0	14/6	trans		N		F				
51					P	1	Y	Y			D/CD	2/8	dist		N	check note bk	F				
52					P	2	Y	Y			D/CD	2/8	dist		N	- " -	W				
53					P	1	Y				0/0	2/8	dist	ALW			F				
54					P	2	Y	Y			D/CD	2/8	dist		N		F				
55					P	1	Y				D/CD	2/8	dist		N		F				
56					P	1	Y				0/0	2/8	dist		N		F				

Summary/General Comments

3

Map Sheet Number 92

Pre Field Recorder(s) AW

Field Recorder(s)

Swan Bioplan Vegetation Mapping Data

R E M	RE M2	XM AP	LIN TYPE	L I N E A R	M L U	U N I T S	U P L A N D ?	W E T L A N D ?	V I S I T ?	DETAIL/ Area Name	VEG CON	Field date 200_	OBS From	YNOTASS	D E T V I S R E O D	COMMENTS	VEG STRU C/DENS	FCT	DOMINANTS		
																			1	2	3
x57	-	-	-	-	P	1	Y	-			D/C	2/8	dist		N		F		Melrha Eucal		
x58	-	-	fence	Y	P	1	Y	-			D/C	2/8	edge		N		F		Eucal		
x59	-	-	fence	Y	P	1	Y	-			D/C	2/8	dist		N		F		Eucal		
x510	-	-	-	-	P	1	Y	-			D/C	2/8	dist		N		W		Eucal		
x61	-	-	fence	Y	P	1	Y	-			D/C	2/8	aerial				F		Eucal		
x62	-	-	-	-	P	1	Y	-			D/C	2/8	aerial				F		Eucal		
x63	-	-	-	-	P	1	Y	-			D	14/6	dist		11		F	-	Eucal	Agallo	
x64	Y	-	-	-	P	1	Y	-			D	27/4	dist		N		F	na	Agallo	Eucal	
x71	-	-	road	Y	P	1	Y	-			D/D	14	edge		N		W	-	Eucal	Melpre	
x72	-	-	channel	Y	P	1	-	Y			D	14/6	edge		N	all dead (scattered)	W	-	Melpre		
x73	-	-	-	-	P	1	Y	-			D/D	14/6	aerial	11/11	11		W	21b	Kungla	Banatt	
x74	-	-	-	-	P	2	Y	-			G	14/6	dist		N	T	F	na	Agallo		
x75	-	-	-	-	P	1	Y	-			G	14/6	aerial	11/11	11		F	21b	Banatt	Banili	Kungla
x76	-	-	-	-	P	1	Y	-			G	14/6	edge		N	some flowers	F	21b	Banatt	Banili	Kungla

Summary/General Comments

4

Map Sheet Number 92

Pre Field Recorder(s) Aw

Field Recorder(s)

Swan Bioplan Vegetation Mapping Data

R E M	RE M2	XM AP	LIN TYPE	L I N E A R	M L U	U N I T S	U P L A N D ?	W E T L A N D ?	V I S I T ?	DETAIL/ Area Name	VEG CON	Field date 200_	OBS From	YNOTASS	D E T V I S I O N R E Q D	COMMENTS	VEG STRUC/ DENS	FCT	DOMINANTS		
																			1	2	3
X77	-	road	B	P	4	Y	Y				47					Rediro	F	216	Banatt	Baniti	Kunglo
																	F	-	Agolle	Eucal	
																	st	-	Melvim	Eucal	
X78	-				P	1	Y	-			0-0 4/6	edge		N			F	-	Agolle		
										77 (4th cont)						Hypociss, Ag, Aulos, Posa, Trulob, Aca, Rag, Vert, Anake	W	-	Melpre		

Summary/General Comments