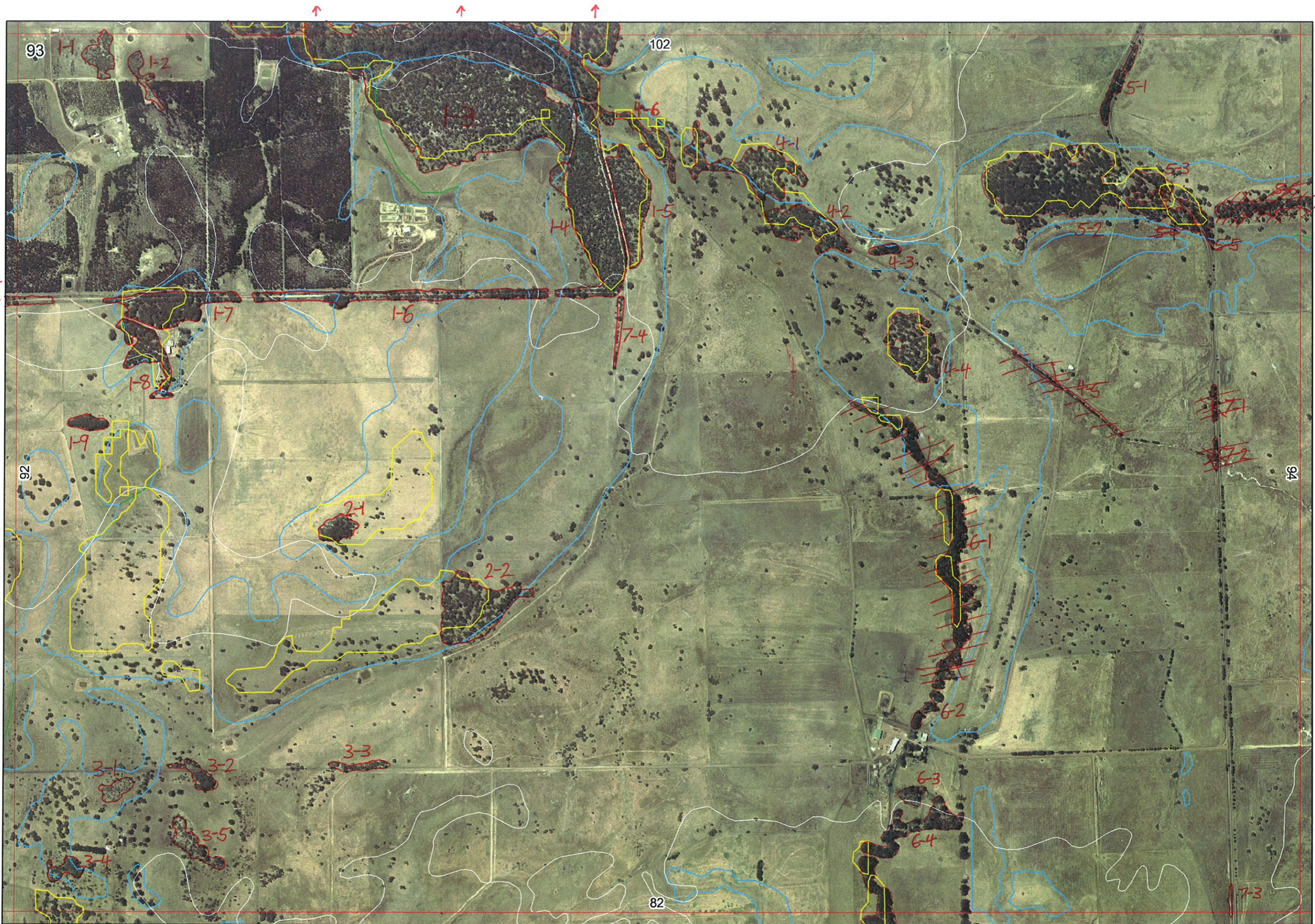


Ag



92/4-5
↔

↑ ↑ ↑

↓
82/6-1

✓

R E M	RE M2	XM AP	LIN TYPE	L I N E A R	M L U	U N I T S	U P L A N D ?	W E T L A N D ?	V I S I T ?	DETAIL/ Area Name	VEG CON	Field date 200_	OBS From	YNOTASS	D E T V I S R E Q D	COMMENTS	VEG STRU C/ DENS	FCT	DOMINANTS		
																			1	2	3
✓	1	1	-	-	p	1	-	Y		53	D-C	2/8	dist		N		W		Kungla	Eucmar	Banqua
✓	1	2	-	-	p	1	-	Y		5	D	2/8	dist		N		W		Melra		
✓	1	3	Y	-	B/p	3	Y	Y		47	D-G	2/8	dist		N	report ⑤ Banatt Eucmar Banill W	F	W F	Eucrad Euccal	Muerha Agofle	
X	1	4	-	-	B/p	5	Y	Y		④ - Warri, Peppi ⑤ - Eucrad, Agofle	VG	14/6	edge		N	Acusem Cloverdale report ② Kinabo, Banatt, Euccal ③ Melpre	F	216	① Banatt	Eucmar	Kungla ← sum bozh.
X	1	5	-	-	B/p	1	Y	-			CD-D	14/6	edge		N	Banill ② com - Agofle	F	-	Kungla	Eucmar	Banatt
X	1	6	-	road	Y B/p	3	Y	Y			D-G	14/6	tran		N	Paddro, Kerlen, Eucmar	W	-	① Euccal Melpre	② Agofle	③ mid pre logail
X	1	7	-	road	B p	1	Y	-			CD-D	14/6	tran		N		F	-	Agofle		
X	1	8	-	-	p	1	Y	-			CD-D	14/6	dist		-		F	-	Agofle		
X	1	9	-	-	p	1	Y	-			CD-D	14/6	dist		-		F	-	Agofle		
X	2	1	-	-	p	1	Y	-			CD-D	14/6	dist		-		F	-	Agofle		
X	2	2	-	-	p	1	Y	-			D/G	14/6	dist		-		W	-	Euccal Melrhyph	Agofle	
X	3	1	-	-	p	1	-	Y			CD-D	14/6	aerial	AW	N		W	-	Mel pre		
X	3	2	-	-	p	1	Y	-			D	14/6	vdist		N		F	-	Agofle		
X	3	3	-	-	p	1	Y	-			CD-D	14/6	aerial	AW	N		F	-	Euccal		
X	3	4	-	-	p	1	-	Y			CD-D	14/6	dist		N		F	-	Eucrad	Euccal	
X	3	5	-	-	p	1	Y	-			CD-D	14/6	aerial	AW	N		W	-	Euccal	Eucrad	
X	4	1	-	channel	Y B/p	1	-	Y			D	14/6	dist		N		W	-	Eucrad		

Summary/General Comments

R E M	RE M2	XM AP	LIN TYPE	L I N E A R	M L U	U N I T S	U P L A N D ?	W E T L A N D ?	V I S I T ?	DETAIL Area Name	VEG CON	Field date 200_	OBS From	YNOTASS	D E T V I S R E Q D	COMMENTS	VEG STRU C/D ENS	FCT	DOMINANTS		
																			1	2	3
X4	2	-	channel	Y	B/p	1	-	Y			D	14/6	dist		N		F	-	Eucrud	Melpre	
X4	3	-	-	-	B/p	1	Y	-			D	14/6	aerial		N		F	-	Melpre		
X4	4	-	-	-	B/p	1	Y	-			D/KO	14/6	aerial		N	Shrub-shrub forest Kite (3)	W	No	Eucal	Agoflx	
4	5	-	channel	Y	P	1	Y	-		X cleared	D/KO	3/6	edge				F		Melpre		
4	6	-	channel	Y	B/p	1	-	Y			D/KO	2/8	dist		N		F		Eucrud	Melpre	
5	1	-	road	Y	P	1	Y	-			D/KO	3/8	edge			Kingia	F		Eucal		
5	2	-	-	-	P	1	Y	-			D/KO	3/8	edge				F		Eucal	Agoflx	
5	3	-	-	-	P	1	Y	-			D/KO	3/8	edge			Ban off	F		Eucal	Agoflx	② Eucal
5	4	-	-	-	P	1	Y	-				"					F		Eucal		
5	5	-	road	Y	P	1	Y	-				"				cleared	F		Eucal		
5	6	Y	fence	Y	P	1	Y	-								cleared	F		Eucal		
6	1	-	channel	Y	P	2	-	Y								cleared	F		Eucrud		
																	SH				
6	2	-	channel	Y	P	1	-	Y			D/KO	3/8	dist				F		Eucal		
6	3	-	-	-	P	1	-	Y			D/KO	7/8	dist				W		Eucal	Agoflx	
6	4	-	channel	Y	P	1	-	Y			D/KO	9/8	dist				F		Eucal		
7	1	-	road	Y	P	1	Y	-			D/KO	3/8	dist			cleared	W		Eucal		
7	2	-	road	Y	P	1	Y	-			D/KO	3/8	dist			"	W		Eucal		
7	3	-	road	Y	P	1	-	Y			D/KO	3/8	aerial				SH		Melpre-?		
7	4	-	road	Y	P	1	Y	-			D/KO	14/6	edge		N	Podaro	W	No	Agoflx	Eucrud	Banoff