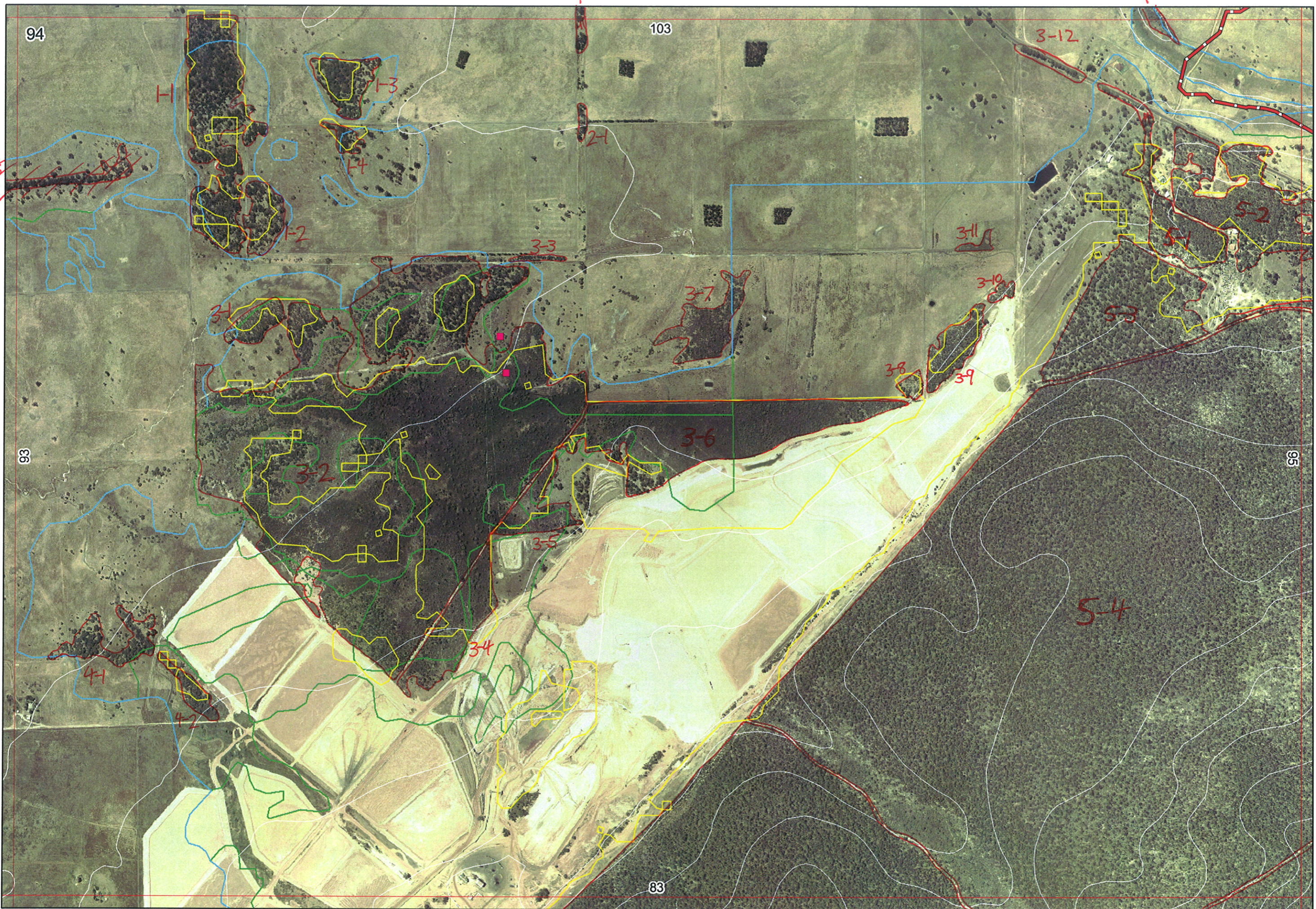


Ag



103/3-1

103/4-5

94

103

3-12

1-3

1-4

1-2

2-1

3-3

3-11

3-7

3-10

3-1

5-2

3-6

3-8

3-9

3-2

3-5

5-4

3-4

4-1

4-2

83

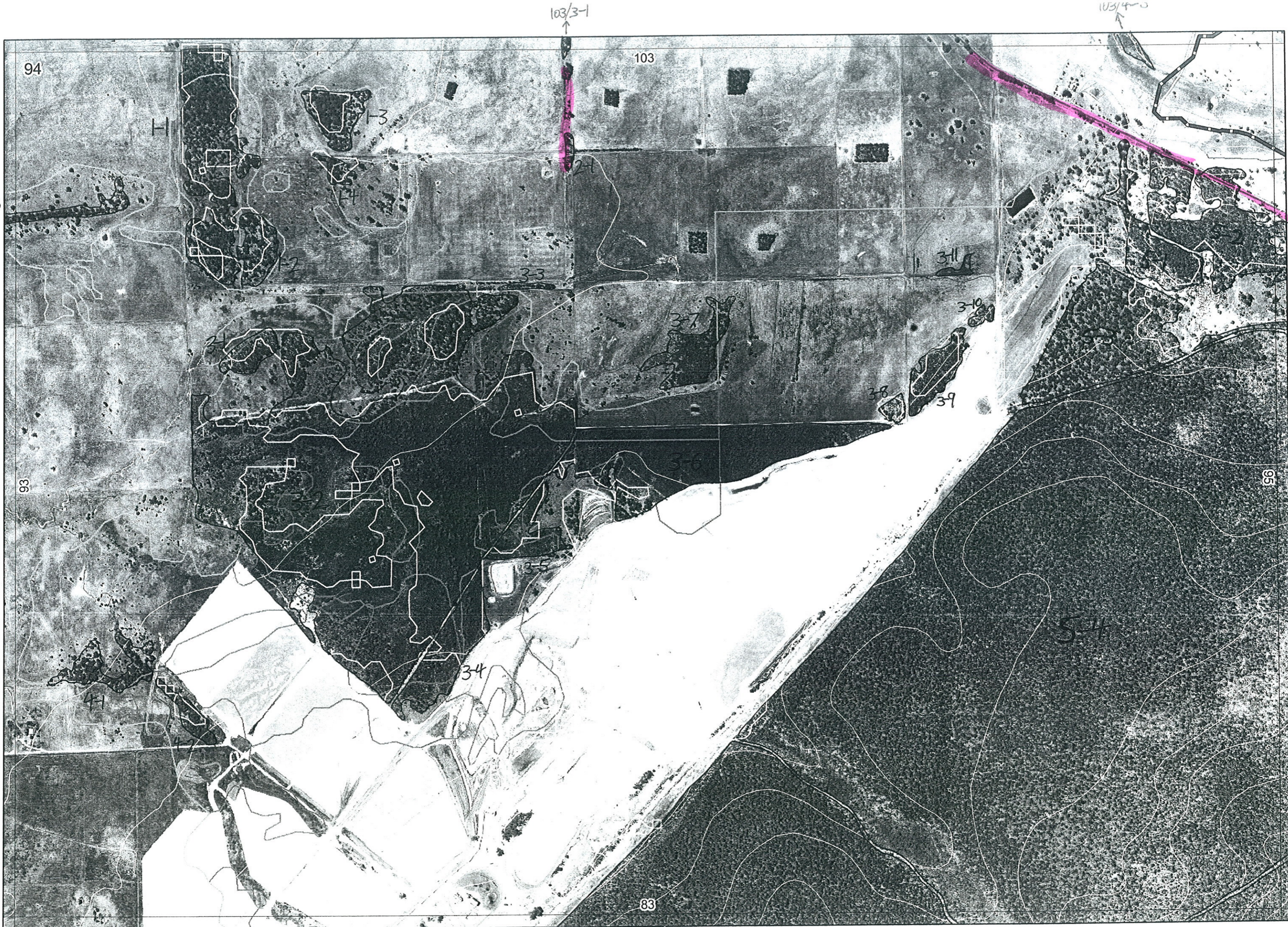
83/2-4

95/3-2

95/3-2

94/5-2

93/5-6



94

103

103/3-1

103/4-0

13/5-6  
←

→

94/5-2  
→

93

95

→

83

83/2-4  
↓

↓

3-3

3-11

3-10

3-8

3-9

3-7

3-4

4-1

5-4

1

Map Sheet Number 94

Pre Field Recorder(s) AW

Field Recorder(s)

Swan Bioplan Vegetation Mapping Data

R E M	RE M2	XM AP	LIN TYPE	L I N E A R	M L U	U N I T S	U P L A N D ?	W E T L A N D ?	V I S I T ?	DETAIL/ Area Name	VEG CON	Field date	OBS From	YNOTASS	D E T Y I S R E Q D	COMMENTS	VEG STRUC/ DENS	FCT	DOMINANTS		
																			1	2	3
11	-	-	-	-	P	3	Y	-			0	9/4/03	AW Gold survey	N		-	F	1 Eucal Eucmar Kinaw	2 Banatt Banili	3 Melpre	
12	-	-	-	-	P	1	Y	-			0	airial	AW	N		W	-	Banatt	Banili	Eucmar	
13	-	-	-	-	P	1	Y	-			1/00	airial	AW	N		F	-	Eucal	Eucmar	Kinaw	
14	-	-	-	-	P	1	Y	-			0/00	airial	AW	N		F	-	Eucal	Eucmar	Kinaw	
21	-	road	Y	P	1	Y	-				D/CB	3/8	airial			W		Eucal			
31	-	-	-	-	P	1	Y	-								F		Eucal			
32	-	-	-	-	P	5+	Y	Y		quadrats Iluka Roberts block											
33	-	road	Y	P	1	Y	-									F		Eucal			
34	-	-	-	-	P	2	-	Y		Iluka Roberts block											
35	-	-	-	-	P	2	Y	Y		Iluka Roberts block							SC		Kungla		

Summary/General Comments

2

Map Sheet Number 94

Pre Field Recorder(s) AW

Field Recorder(s)

Swan Bioplan Vegetation Mapping Data

R E M	RE M2	XM AP	LIN TYPE	L I N E A R	M L U	U N I T S	U P L A N D ?	W E T L A N D ?	V I S I T ?	DETAIL/ Area Name	VEG CON	Field date	OBS From	YNOTASS	D E T V I S R E Q D	COMMENTS	VEG STRUC/ DENS	FCT	DOMINANTS		
																			1	2	3
36	-	-	-	-	P	3	Y	Y		Iluka Roberts block											
37	-	-	-	-	P	1	-	Y									W		Berrett		
38	-	-	-	-	Fw	1	Y	-									w		Berrett		
39	-	-	-	-	Fw	1	Y	-									W		Berrett		
310	-	-	-	-	Fw	1	Y	-									W		Berrett		
311	-	-	-	-	Fw	1	-	Y			D 3/8	VD					S		Apo lin.		
41	-	-	-	-	P	1	-	Y									W		Mel		
42	-	-	-	-	P	1	-	Y									W		Mel		
51	-	-	-	-	WS	1	Y	-			D 3/8	edge					W		Euc mar	Euc cal	
52	Y	-	-	-	WS	1	Y	-			VG 3/8	edge			Dry hook X soil frac		F		Euc haem	Euc mar	Euc cal
53	-	-	-	-	WS	1	Y	-									F		Euc		
54	Y	-	-	-	WS	3+	Y	Y									W				
312											D 3/8	edge					HS		Euc cal		
																	W		Mel pres		

Summary/General Comments