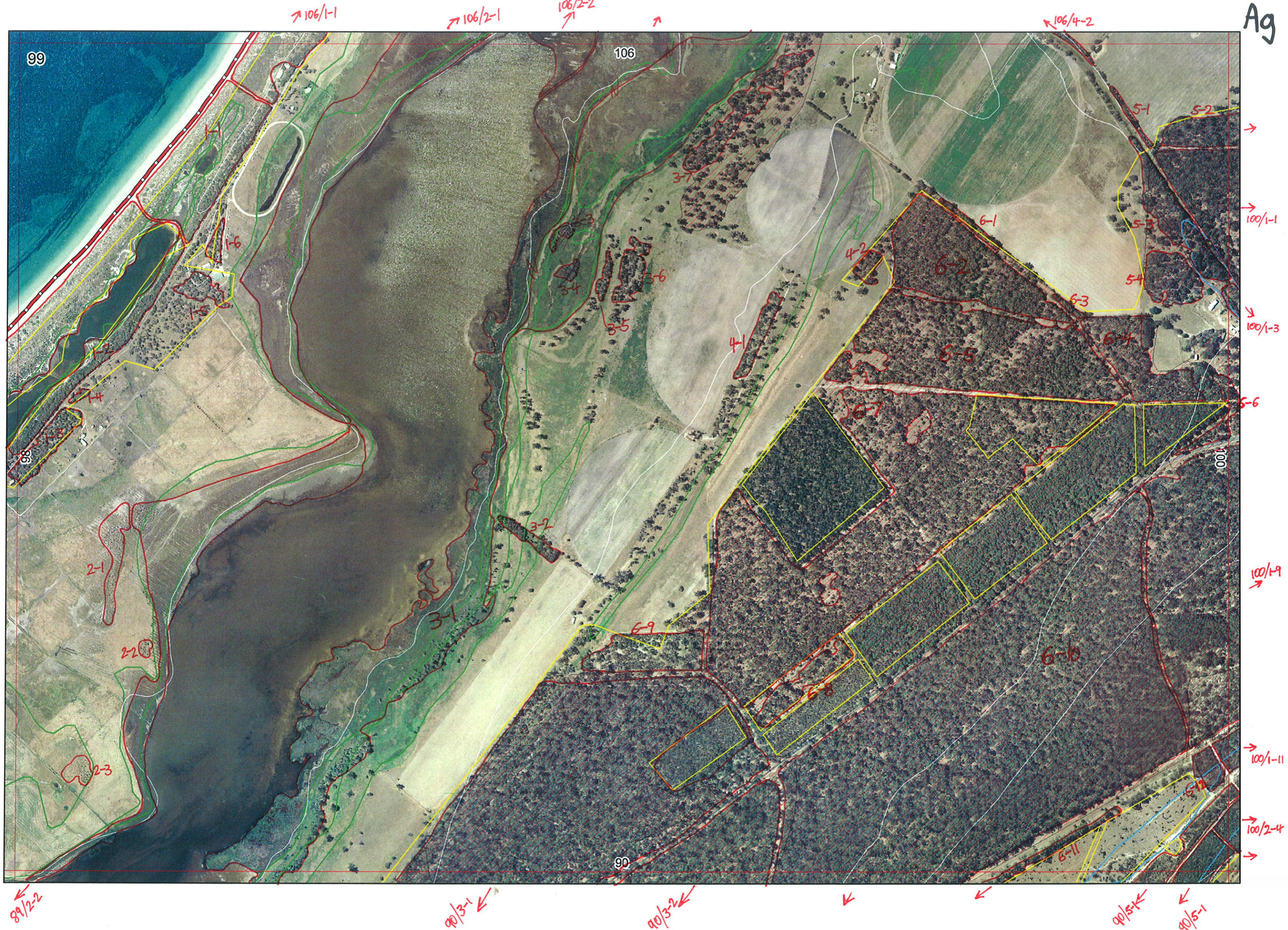


Ag



Sent to Ag 1/9/06

106/1-1

106/2-1

106/2-2

106/4-2

99

106

5-1

5-2

100/1-1

6-1

5-4

6-3

100/1-3

4-1

5-6

8/1-1

100/1-9

2-1

2-2

100/1-11

100/2-4

99

6-11

89/2-2

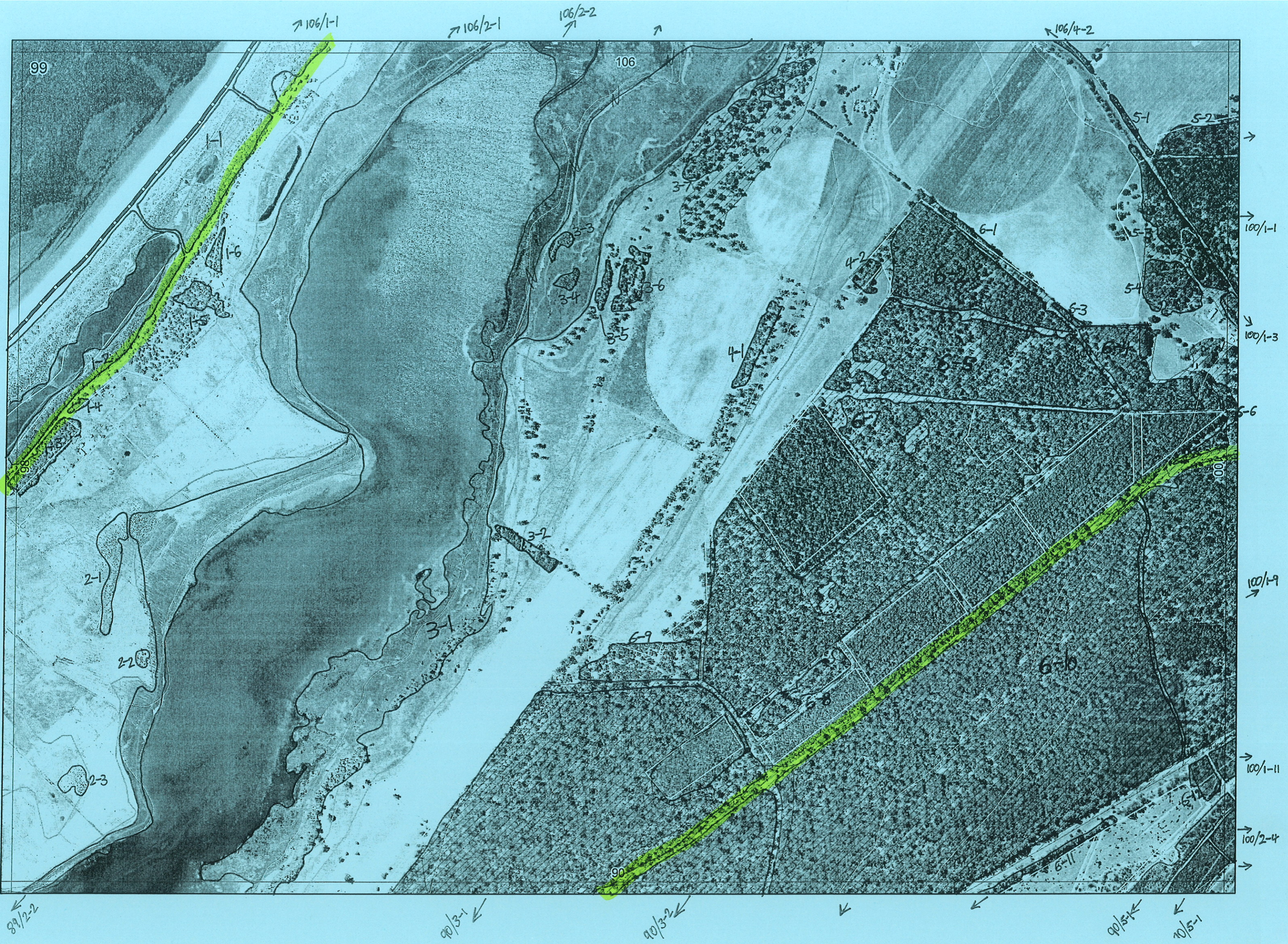
90/3-1

90/3-2

90/5-1

90/5-1





1

Map Sheet Number 99

Pre Field Recorder(s) AW

Field Recorder(s)

Swan Bioplan Vegetation Mapping Data

R E M	RE M2	XM AP	LIN TYPE	L I N E A R	M L U	U N I T S	U P L A N D ?	W E T L A N D ?	V I S I T ?	DETAIL/ Area Name	VEG CON	Field date 200_	OBS From	YNOTASS	D E T V I S R E Q D	COMMENTS	VEG STRUC/ DENS	FCT	DOMINANTS		
																			1	2	3
1	1	-	-	-	Q	3	Y	Y													
1	2	Y	channel	Y	Q	2	Y	Y									F	30b	Agofle		Veppla
																					Sarcocornia
1	3	Y	-	-	Q	1	Y	-									W	30b	Agofle		
1	4	-	-	-	Q	1	Y	-									W	30b	Agofle		
1	5	-	-	-	Q	1	Y	-									W	30b	Agofle		
1	6	-	-	-	Q	1	Y	-									W	30b	Agofle		
2	1	-	-	-	Q	1	-	Y													
2	2	-	-	-	Q	1	-	Y													
2	3	-	-	-	Q	1	-	Y													
3	1	-	channel	Y	Q	2	-	Y													
3	2	-	fence	Y	Q	2	Y	Y													
* 3	3	-	-	-	Q	1	-	Y													
* 3	4	-	-	-	Q	1	-	Y													
3	5	-	-	-	Q	1	Y	-													

— this 2 rem have been dissolved into a larger 3-1, if this reflected on ground delete off map and class

Summary/General Comments

2

Map Sheet Number 99

Pre Field Recorder(s) ALW

Field Recorder(s)

Swan Bioplan Vegetation Mapping Data

R E M	RE M2	XM AP	LIN TYPE	L I N E A R	M L U	U N I T S	U P L A N D ?	W E T L A N D ?	V I S I T ?	DETAIL/ Area Name	VEG CON	Field date 200_	OBS From	YNOTASS	D E T V I S R E Q D	COMMENTS	VEG STRU C/ DENS	FCT	DOMINANTS			
																			1	2	3	
36	-	-	-	-	S	1	Y	-														
37	-	-	-	-	S	1	Y	-														
41	-	road	Y	S	1	Y	-			CB											Eucgom	
42	-	-	-	-	S	1	Y	-		D							F				Eucgom	
51	-	channel	Y	S	1																	
52	Y	-	-	-	S	1	Y	-	N	Ludlow Tuart forest	D				N		F	30b			Eucgom	Agofle
53	-	-	-	-	S	1	Y	-	N	"	D				N		F	30b			Eucgom	Agofle
54	-	-	-	-	S	1	Y	-	N	"	D				N		F	30b			Eucgom	Agofle
61	-	road	Y	S	1	Y	-	N		"	D				N		F	30b			"	"
62	-	-	-	-	S	1	Y	-	N	"	D				N		F	30b			"	"
63	-	road	Y	S	1	Y	-	N		"	D				N		F	30b			"	"
64	-	-	-	-	S	1	Y	-	N	"	D				N		F	30b			"	"
65	-	-	-	-	S	1	Y	-	N	"	D-CB				N		F	30b			"	"
66	Y	-	-	-	S	1	Y	-	N	"	D				N		F	30b			"	"
67	-	-	-	-	S	1	Y	-	N	"	D-CB				N		F	30b			"	"
68	-	-	-	-	S	1	Y	-	N	"	D-CB				N		F	30b			"	"
69	-	-	-	-	S	1																
610	Y	-	-	-	S	1	Y	-	N	widlow tuart forest	D				N		F	30b			Eucgom	Agofle

Summary/General Comments

