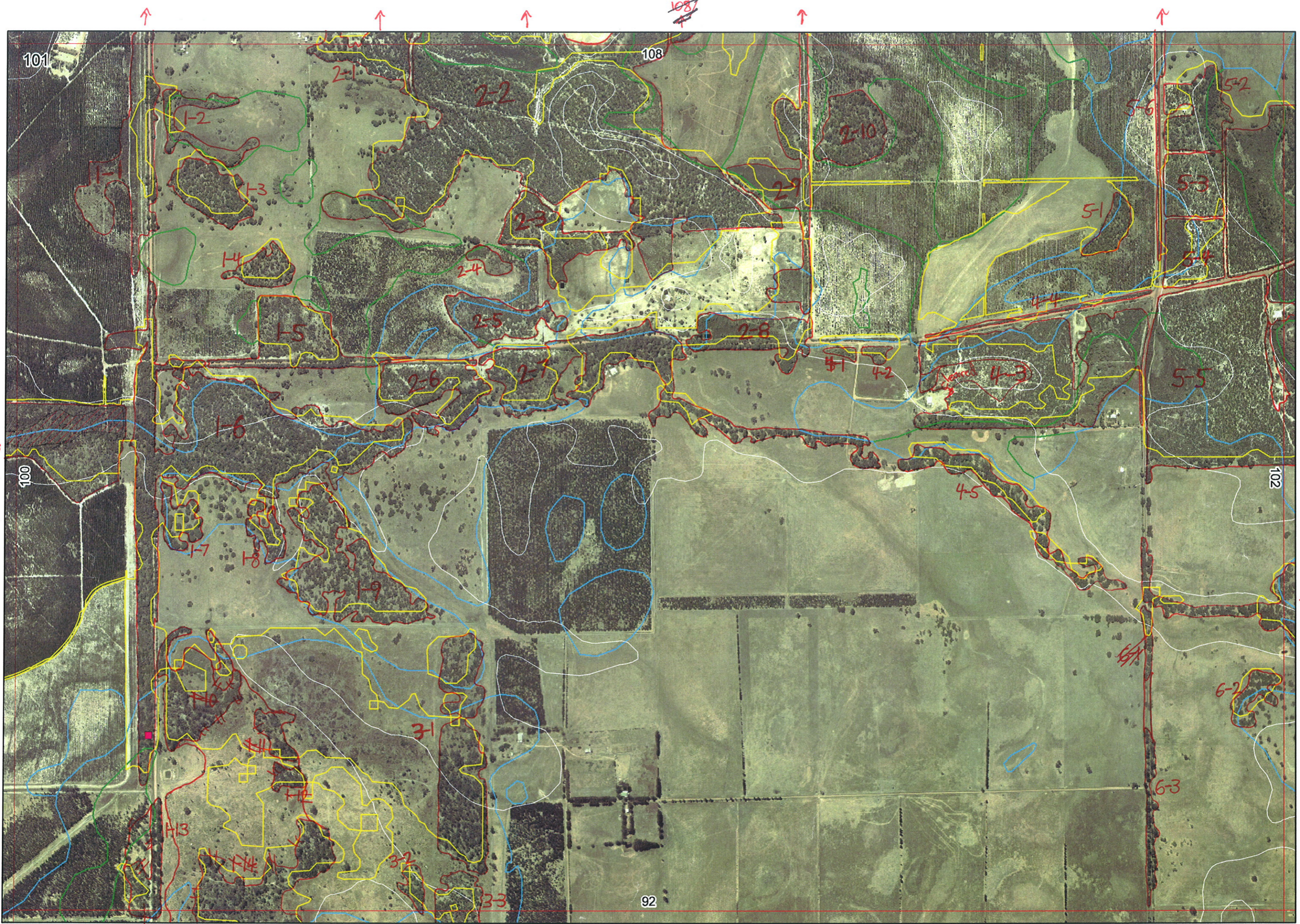


Ag



←
 Everaco Mairie
 ←
 Evocal Agofie
 ←

→
 102/1-1
 →
 102/1-2
 →
 102/2-1
 →

↓
 102/2-2
 ↓

Sept to Ag 1/9/66



101

2-1

108

5-1

1-4

2-4

4-1

4-2

← 100/4-3

100

1-7

1-8

4-5

102

→ 102/1-1

→ 102/1-2

→

→ 102/2-1

H3

3-1

1-4

3-2

3-3

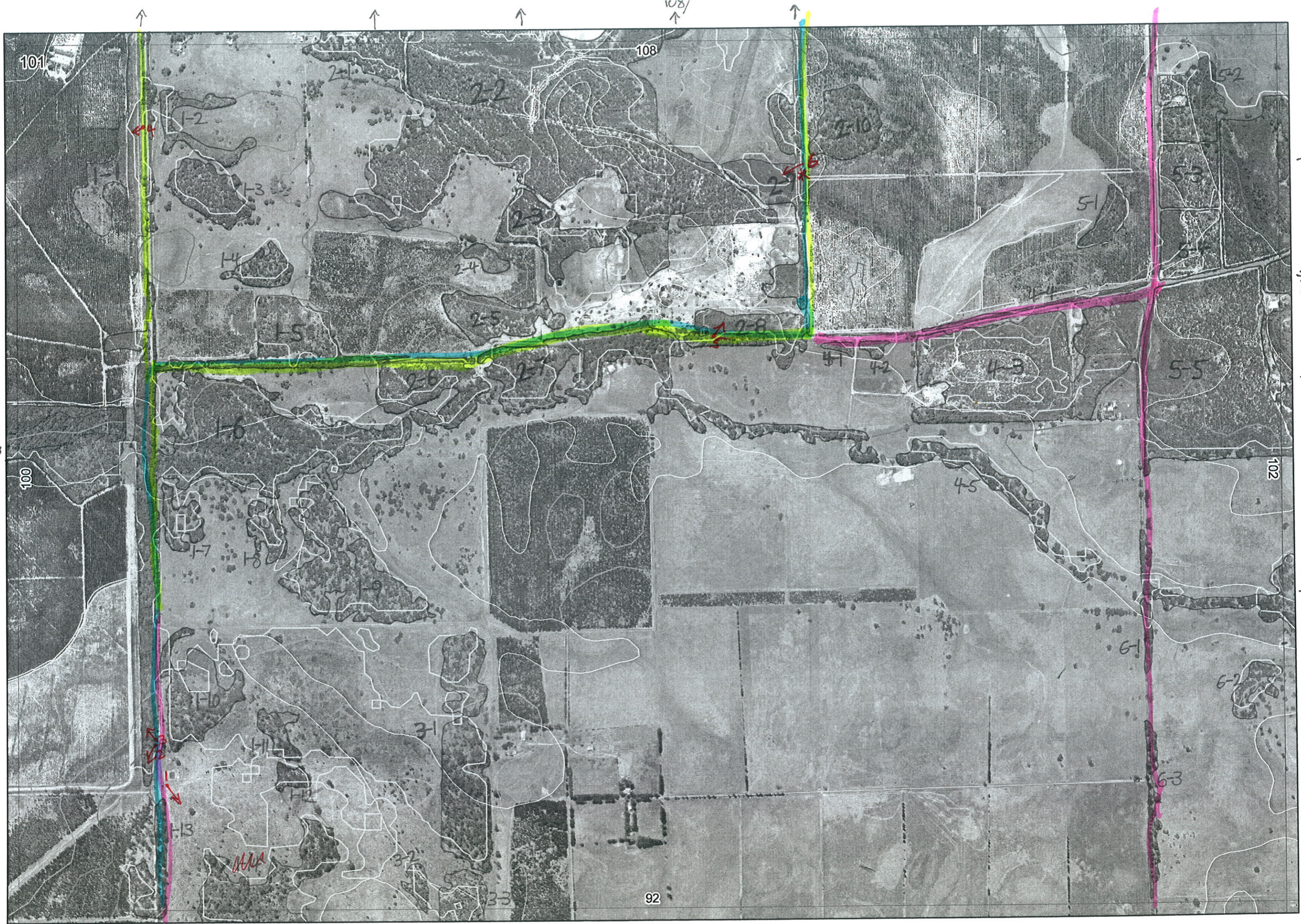
92

6-2

6-3

↓ 02/2-2

↓



101

108

5-2

1-2

2-1

2-2

2-10

1-3

2-3

2-7

5-3

1-4

2-4

5-1

1-5

2-5

2-8

5-5

2-6

2-7

4-1

4-2

4-3

1-6

4-5

1-7

1-8

102

100

1-10

3-1

6-1

1-13

1-12

6-2

AAA

3-2

6-3

3-3

92

100/4-3

102/1-1

102/1-2

102/2-1

1

Map Sheet Number 101

Pre Field Recorder(s) AW

Field Recorder(s) [unclear]

Swan Bioplan Vegetation Mapping Data

R E M	RE M2	XM AP	LIN TYPE	L I N E A R	M L U	U N I T S	U P L A N D ?	W E T L A N D ?	V I S I T ?	DETAIL/ Area Name	VEG CON	Field date 200_	OBS From	YNOTASS	D E T V I S R E Q D	COMMENTS	VEG STRU C/DENS	FCT	DOMINANTS		
																			1	2	3
1	1	Y	road	Y	B/P	3	Y	Y			06/09	edge			N	Eucaal		Eucaal	Eucaal		
															N	Eucaal Melaleuca Melaleuca Apohex	HS		Perell	Regoil	
															N		W		Mel		
															N		W		Eucaal	melaleuca	melaleuca
1	2	-	-	-	B/P	1	Y	Y			07/08	1/8 edge			N						
1	3	-	-	-	B/P	1	Y	-			08/08	1/8 dist			N						
1	4	-	-	-	B/P	1	Y	-			08/08	1/8 dist			N						
1	5	-	road	B	B/P	2	Y	Y			08/08	1/8 edge			N						
X	16	-	road channel	B	B/P	7	Y	-		part opp. lot	08/08	1/8 edge			N						
															N	Eucaal Melaleuca Melaleuca Apohex	W		Eucaal	Eucaal	Eucaal
															N	5th com Eucaal Eucaal Split plot 6th bank Melaleuca Melaleuca	W		Apohex	Borati	Kurata
1	7	-	-	-	B/P	1	Y	-			08/08	1/8 dist									
1	8	-	-	-	B/P	1	Y	-			08/08	1/8 "									
1	9	-	-	-	B/P	1	Y	-			08/08	1/8 "									
1	10	-	-	-	P	2	Y	Y													
1	11	-	-	-	P	1	Y	-													
1	12	-	-	-	P	1	Y	-													
1	13	Y	road	Y	P	1	Y	-			08/08	1/8 dist									
1	14	Y	-	-	P	1	Y	-													

Summary/General Comments

Handwritten notes on the left margin.

2

17/12/2003

Swan Bioplan Vegetation Mapping Data

Map Sheet Number 101

Pre Field Recorder(s) AW

Field Recorder(s)

R E M	R E M2	X M A P	L I N E T Y P E	L I N E A R	M L U	U N I T S	U P L A N D ?	W E T L A N D ?	V I S I T ?	D E T A I L A r e a N a m e	V E G C O N	F i e l d d a t e 2 0 0	O B S F r o m	Y N O T A S S	D E T Y I S R E Q D	C O M M E N T S	V E G S T R U C T U R E D E N S	F C I	D O M I N A N T S		
																			1	2	3
																	W		Agoflex		
																	W		Euc		
✓	2	1	Y	-	-	B/p	2	Y	-												
✓	2	2	Y	-	-	B/p	3	Y	Y												
✓	2	4	-	-	-	B/p	1	-	Y								HS				
✓	2	5	-	-	-	B/p	1	Y	-				ET	BCD	1/2	edge					
✓	2	6	-	channel	B	B/p	2	Y	Y				part spp list for area								
✓	2	7	-	road channel	Y	B/p	2	Y	Y												
✓	2	8	-	road	Y	B/p	2	Y	Y												
✓	2	9	Y	road	Y	B/p	3														
✓	2	10	-	-	-	B/p	1	Y	-												
✓	3	1	-	-	-	P	1	Y	-												
✓	3	2	-	-	-	P	1	-	Y												

Summary/General Comments

3

Map Sheet Number 101

Pre Field Recorder(s) AW

Field Recorder(s)

Swan Bioplan Vegetation Mapping Data

R E M	RE M2	XM AP	LIN TYPE	L I N E A R	M L U	U N I T S	U P L A N D ?	W E T L A N D ?	V I S I T ?	DETAIL/ Area Name	VEG CON	Field date 200_	OBS From	YNOTASS	D E T Y I S R E O D	COMMENTS	VEG STRU C/DENS	FCI	DOMINANTS			
																			1	2	3	
✓	3	3	Y	-	-	P	2	Y	-		D-CD	2/8	dist		N		W W		Mel pre Eucal	Tarvrat		
✓	4	1	-	-	-	P	1	Y	-		S.7	CD	2/8	edge		N		W		Kungla	+ plantings	
✓	4	2	-	-	-	P	1	Y	-		3.3	D/CD	2/8	edge		N		W		Kungla		
✓	4	3	-	-	-	P	3	Y	Y		4.1	D-G	2/8	edge		N	some clearing Melat	W		Kungla	Eucal	
✓	4	4	-	road	Y	P	1	Y	-		1.1	D/CD	2/8	edge		N		W		Eucal	Agofle	
✓	4	5	-	channel	Y	P	1	-	Y		1.1	D/CD	2/8	dist		N		W		Melrha	Melvim	Melpre
✓	5	1	-	-	-	P	1	Y	-		3	D	2/8	aerial		N		W		Kungla	Eucal	
✓	5	2	-	-	-	B/P	2	Y	Y		4.1	D-G	2/8	edge		N		W		Banatt	Eucal	
✓	5	3	-	-	-	B/P	2	Y	Y							N	check report	W		Banatt	Banill	Kungla
✓	5	4	-	-	-	P	2	Y	Y		U	G	2/8	edge		N		W		Banatt	Banill	Kungla
✓	5	5	Y	-	-	P	4	Y	Y	Hutton's Block, Planchon partial spp. list	E	2/8	dist		N	Acc sem ④ Melhap, Mel int, Melter	W	21b	Melpre	Kungla		
																N	Melust Allsem	W		Eucal	Eucal	Agofle
																N		HS	4	Melpre	Banill	Artas
																N		W		Kungla	Banill	
																N		HS		Melpre	Regail	

Summary/General Comments

2

56

4

Map Sheet Number 101

Pre Field Recorder(s) AW

Field Recorder(s)

Swan Bioplan Vegetation Mapping Data

R E M	R E M 2	X M A P	L I N E T Y P E	L I N E A R	M L U	U N I T S	U P L A N D ?	W E T L A N D ?	V I S I T ?	D E T A I L A r e a N a m e	V E G C O N	F i e l d d a t e 2 0 0	O B S F r o m	Y N O T A S S	D E T V I S R E Q D	C O M M E N T S	V E G S T R U C I D E N S	F C I	D O M I N A N T S		
																			1	2	3
			road	Y	P	1	Y	-									W		Euc		
	6	2	-	-	P	1	-	Y			3	D-C	2/8	dist		W			Agalla		
	6	3	road	Y	P	2	Y	-			4	G	2/8	edge		W			Coenar	Buccal	
																			Asfas	Pereli	

joined

Summary/General Comments