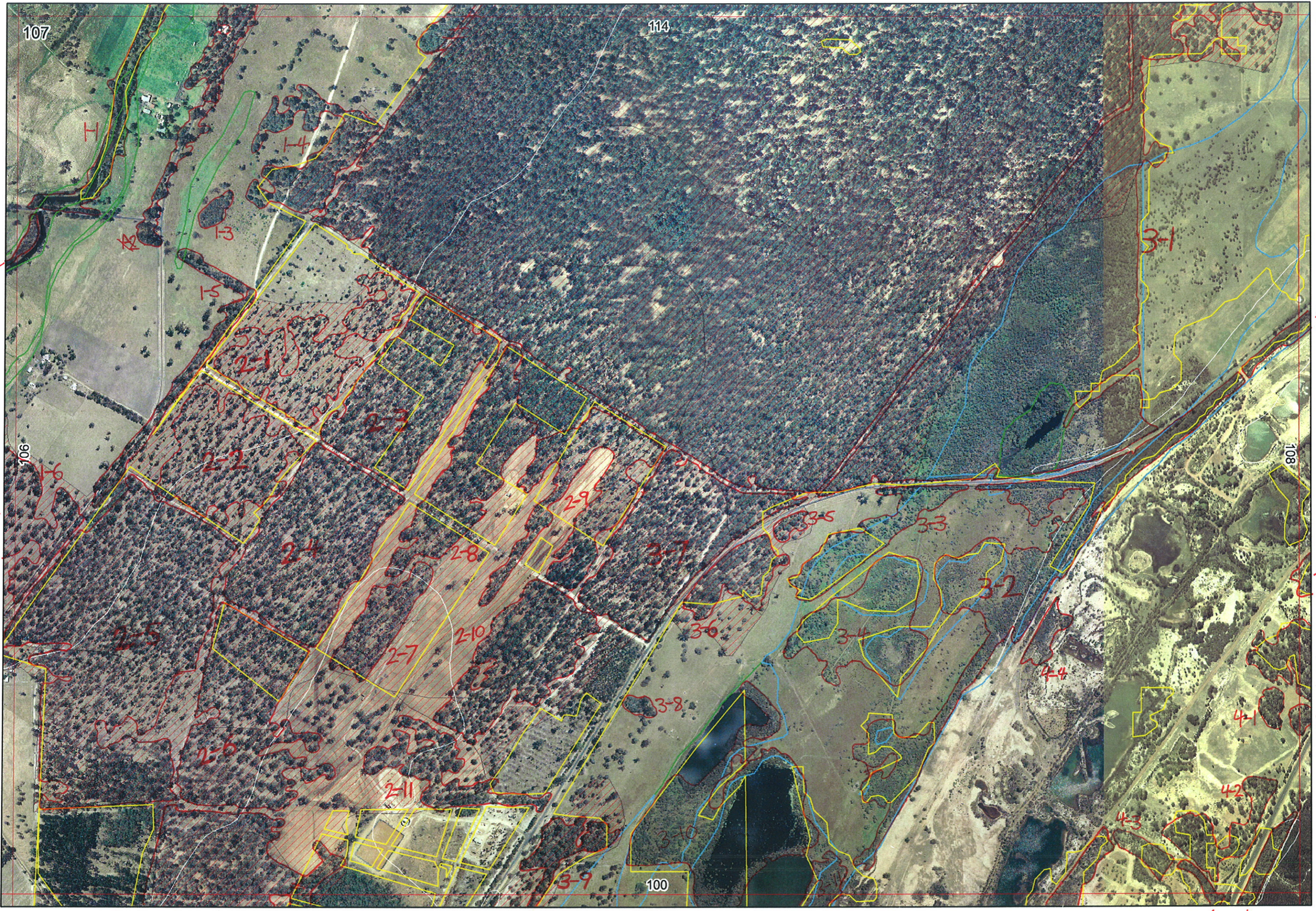


Ag



107

114

106

108

100

100/1-2

100/7-2

100/8-14

100/8-15

114/2-1

114/3-2

106/5-1

108/1-2

108/2-8

108/2-10

108/2-11

↑ 114/2-1

↑ 114/3-2

Sent to Ag ↑ 1/9/06 ↑



107

114

06/5-1

1-3

3-1

108/1-2

106

108

2-9

3-5

108/2-8

2-8

3-3

108/2-10

2-10

4-4

108/2-11

2-7

3-8

4-1

2-11

3-9

4-2

100

100/1-2

100/7-2

100/8-14

100/8-15



107

114

108

100

↑ 114/2-1

↑ 114/3-2

106/5-1

→ 108/1-2

↑

→ 108/2-8

↓

→ 108/2-10

→ 108/2-11

↓ 100/1-2

↓

↓

↓

↓ 100/7-2

↓ 100/8-14

↓ 100/8-15

1-2

1-3

1-5

3-1

2-8

2-10

2-7

2-11

2-9

3-6

3-8

3-9

3-5

3-2

3-4

3-4

4-1

4-2

2

Map Sheet Number 107

Pre Field Recorder(s)

AW

Field Recorder(s)

Swan Bioplan Vegetation Mapping Data

R E M	RE M2	XM AP	LIN TYPE	L I N E A R	M L U	U N I T S	U P L A N D ?	W E T L A N D ?	V I S I T ?	DETAIL Area Name	VEG CON	Field date	OBS From	YNOTASS	D E T V I S R E Q D	COMMENTS	VEG STRU C/ DENS	FCT	DOMINANTS		
																			1	2	3
X31	Y	-	-	S/P	3	Y	Y			see next spot.							F	25	Eucgen	Agalle	
																	W		Mel		
																	W		Mel		
																	W		Mel		
X32	-	-	-	B/P	2	-	Y										W		Mel		
																	W		Mel		
X33	-	-	-	B/P	1	-	Y										W		Mel		
X34	-	-	-	B/P	1	-	Y										F	-	Eucgen	Agalle	
											CP/D		aerial AW								
X35	-	-	-	S	1	Y	-										F	-	Eucgen	Agalle	
											CP/D		aerial AW								
X36	-	-	-	S	1	Y	-										F	25	Eucgen	Agalle	Eucgen
											D		aerial AW								
X37	-	-	-	S	1	Y	-										F	-	Eucgen	Agalle	
											CP/D		aerial AW								
X38	-	-	-	S	1	Y	-										F	-	Eucgen	Agalle	
											CP/D		aerial AW								
X39	Y	-	-	S	1	Y	-										W				
											D										
X41	-	-	-	B/P	1	Y	-										W				
											D										
X42	-	-	-	B/P	1	Y	-										W				
											D										
X43	-	-	-	B/P	1	Y	-										W				
											D		aerial AW								
X44	-	-	-	B/P	1	Y	-										W				

Summary/General Comments

1

Map Sheet Number 107

Pre Field Recorder(s) AW

Field Recorder(s) _____

Swan Bioplan Vegetation Mapping Data

R E M	R E M 2	X M A P	L I N E T Y P E	L I N E A R	M L U	U N I T S	U P L A N D ?	W E T L A N D ?	V I S I T ?	D E T A I L A r e a N a m e	V E G C O N	F i e l d d a t e 2 0 0	O B S F r o m	Y N O T A S S	D E T A I L V I S I T R E Q D	C O M M E N T S	V E G S T R U C T U R E D E N S	F C I	D O M I N A N T S		
																			1	2	3
X1	1	Y	diamond	Y	Q	2	Y	Y					D				W		Eucreef	Mehrto	Duncort Koppi
X1	2	-	road	Y	S	1	Y	-					D				W		Eucgem		
X1	3	-	-	-	S	1	Y	-					D				F		Agofle		
X1	3	-	-	-	S	1	Y	-					D				F		Eucgem	Agofle	
X1	4	-	-	-	S	1	Y	-					D				F		Eucgem	Agofle	Eucreef
X1	5	-	road	Y	S	2	Y	Y					D				W		Eucgem		
X1	6	Y	-	-	S	1	Y	-					D				W		Eucgem	Agofle	
X2	1	-	-	-	S	1	Y	-					airial	AW	N		W		Eucgem	Agofle	
X2	2	-	-	-	S	1	Y	-					airial	AW	N		W		Eucgem	Agofle	
X2	2	-	-	-	S	1	Y	-									W	25	Eucgem	Agofle	
X2	3	-	-	-	S	1	Y	-									W	25			
X2	4	-	-	-	S	1	Y	-									W	25			
X2	5	Y	-	-	S	1	Y	-					D				W	25	Eucgem	Agofle	
X2	6	-	-	-	S	1	Y	-					airial	AW			W	25	Eucgem	Agofle	
X2	7	-	-	-	S	1	Y	-									W	25		Agofle	
X2	8	-	-	-	S	1	Y	-									W				
X2	9	-	-	-	S	1	Y	-					airial	AW	N		W	25		Agofle	
X2	10	-	-	-	S	1	Y	-									W	25	Eucgem	Agofle	Banatt
X2	11	-	-	-	S	1	Y	-									W		Bar		

Summary/General Comments