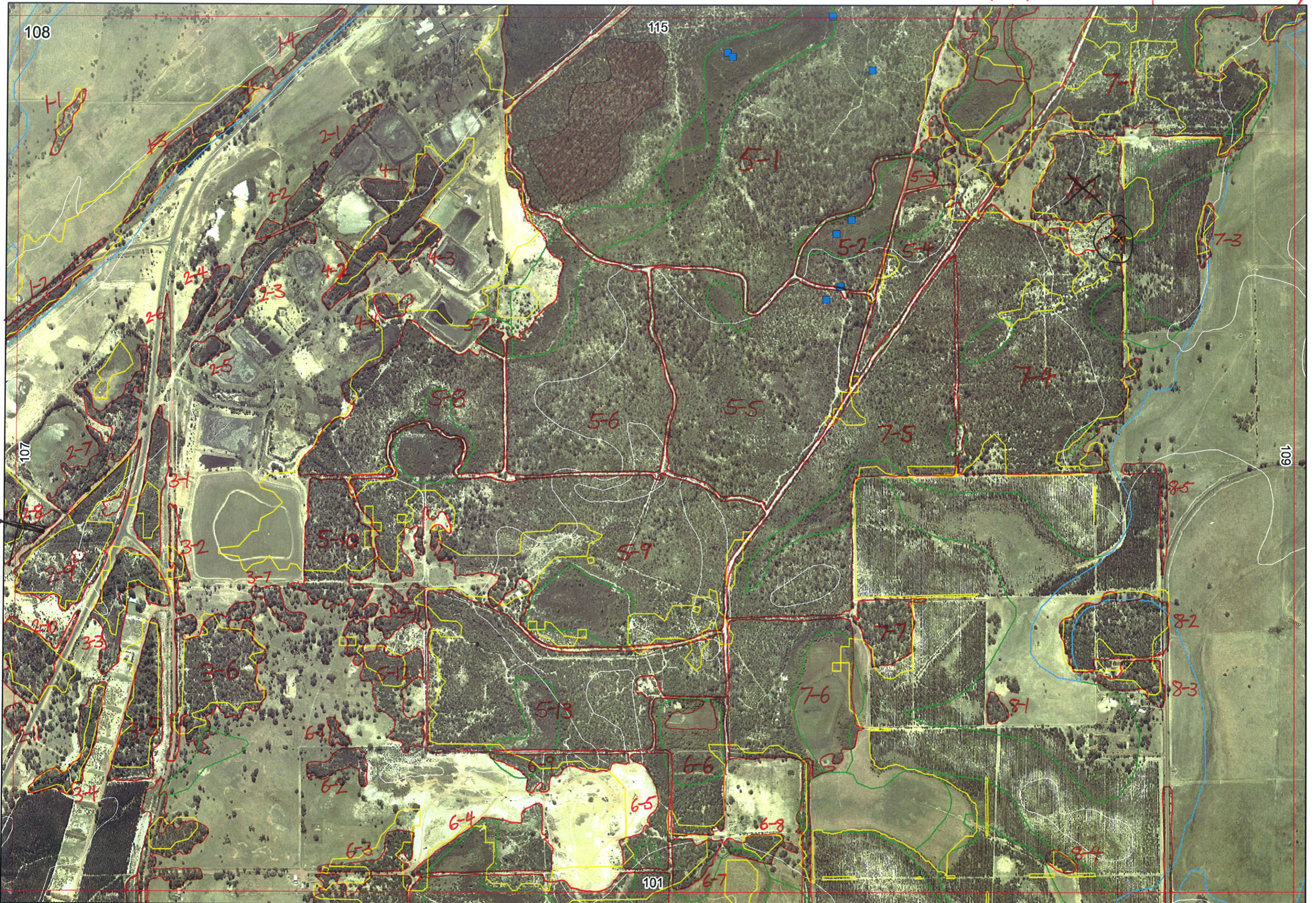


Ag



101/1-1

101/2-1

101/2-2

101/2-9

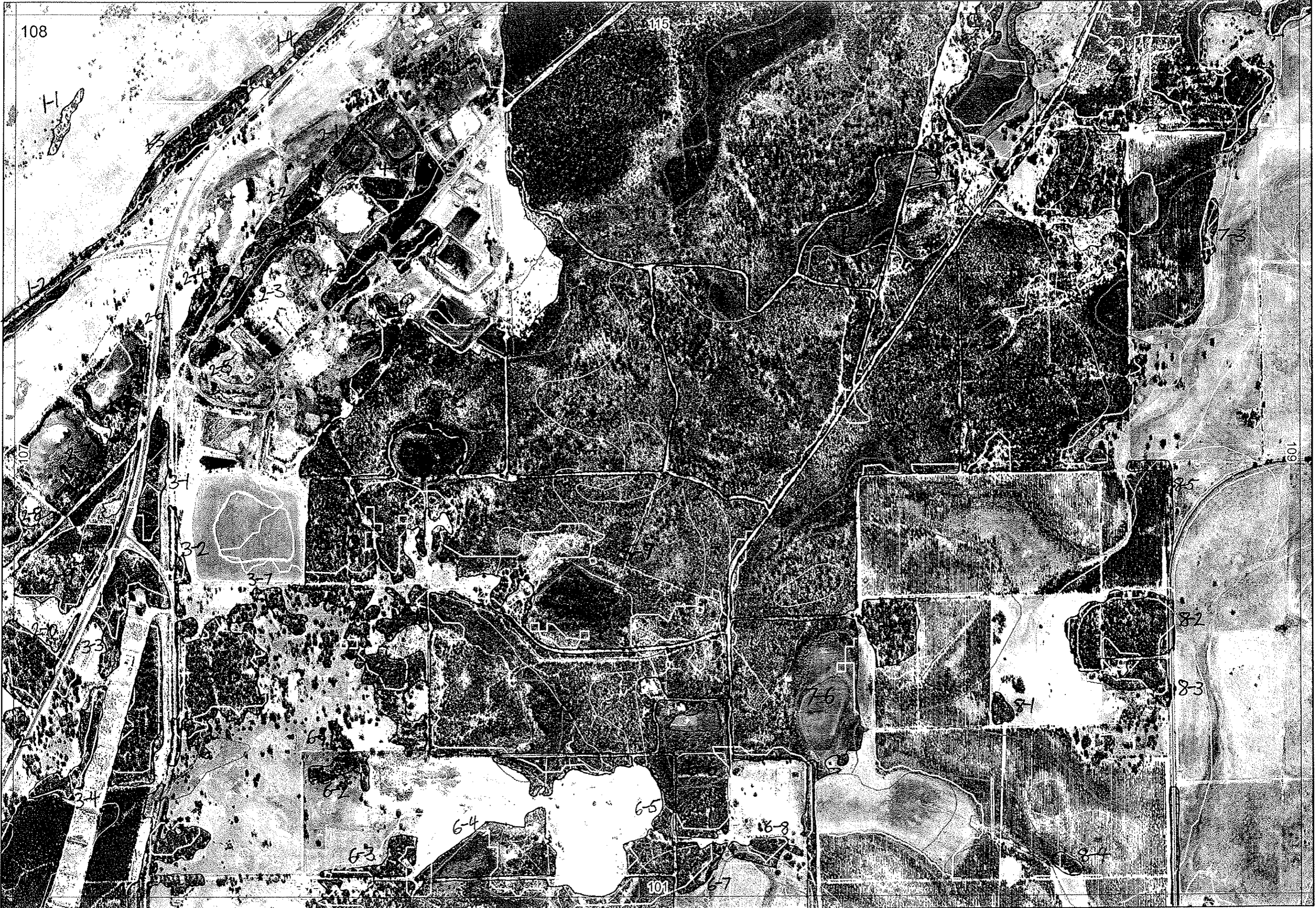
101/5-6

115/4-4



115/4-7

Sent to Ag 1/9/06 116/6-6



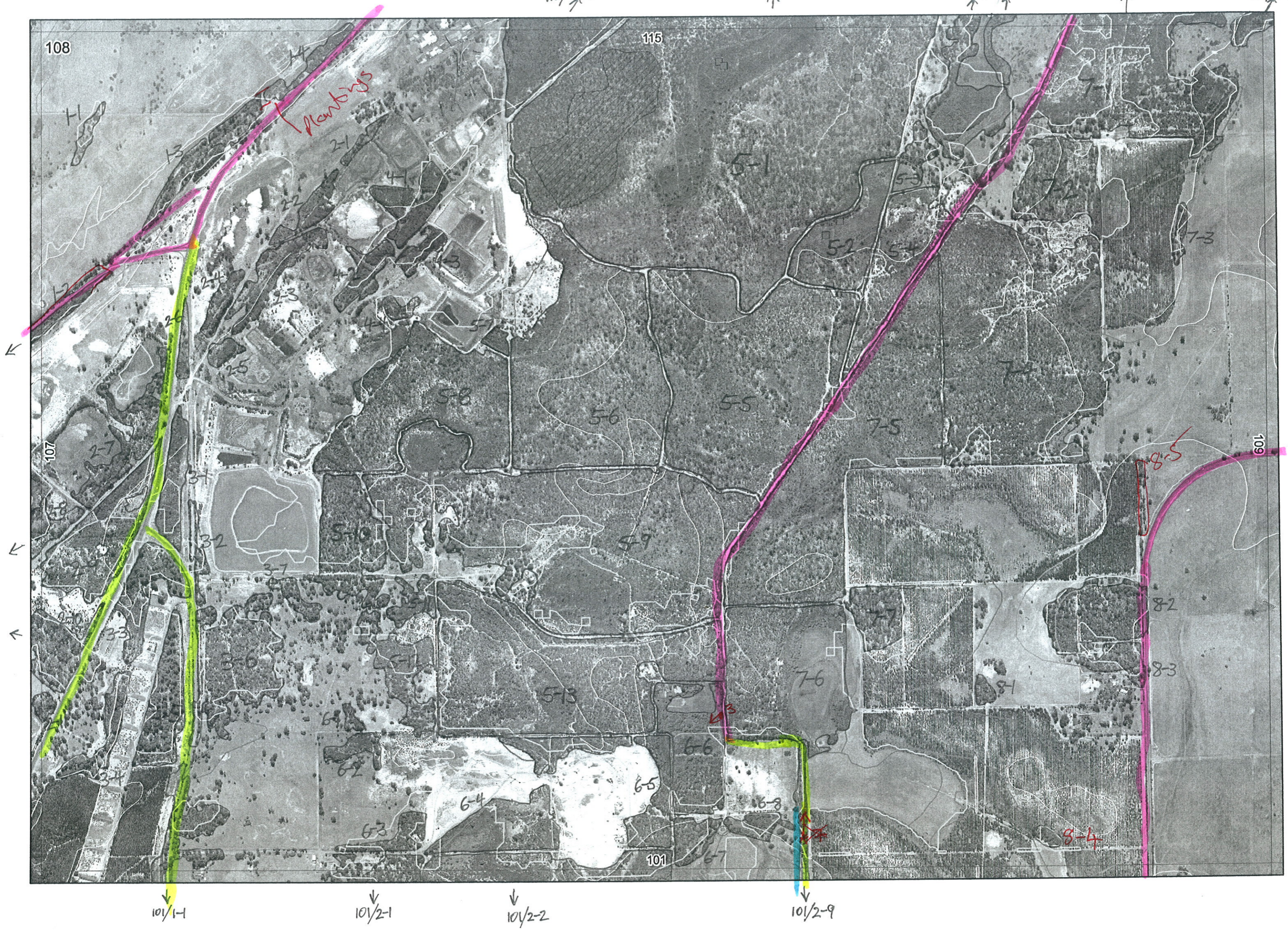
101/1-4

101/2-1

101/2-2

101/2-9

101/5-6



108

115

107

109

116

Mentors

101/1-1

101/2-1

101/2-2

101/2-9

H1

1-3

2-1

2-2

2-4

2-3

2-6

2-5

3-1

3-2

3-7

3-3

3-6

6-1

6-2

6-3

6-4

6-5

6-6

6-8

6-7

5-1

5-2

5-4

5-6

5-5

5-9

5-13

7-5

7-7

7-6

8-2

8-3

8-4

8-5

7-3

←

←

←

115/4-4

↑

↑

↑

116/2-6

1

Map Sheet Number 108

Pre Field Recorder(s) AW

Field Recorder(s) AW BH

Swan Bioplan Vegetation Mapping Data

R E M	R E M2	X M A P	L I N E T Y P E	L I N E A R	M L U	U N I T S	U P L A N D ?	W E T L A N D ?	V I S I T ?	D E T A I L A r e a N a m e	V E G C O N	F i e l d d a t e 2 0 0	O B S F r o m	Y N O T A S S	D E T A I L V I S I T R E Q D	C O M M E N T S	V E G S T R U C T U R E D E N S	F C T	D O M I N A N T S		
																			1	2	3
X1	1	-	-	-	B/p	1	-	Y			5.7	old	1/8	dist	N		W		Melrha?		
X1	2	Y	road	Y	B/p	1	-	Y			5	D	1/8	edge		Reveg Melvim kunqla	W		Eucnd	Agofle	
<del>X1</del>	<del>3</del>	<del>Y</del>	<del>road</del>	<del>Y</del>	<del>B/p</del>	<del>1</del>	<del>-</del>	<del>Y</del>													
X1	4	-	road	Y	B/p	1	-	Y			5	D	1/8	edge	N	PLP Eucmar Eucnd E some plantings	W		Agofle	Eucnd	
X2	1	-	-	-	B/p	1	Y	-													
X2	2	-	-	-	B/p	1	-	Y													
X2	3	-	-	-	B/p	1	Y	-													
X2	4	-	-	-	B/p	1	Y	-			5.7	old	1/8	edge	N	Misc. reveg	W		Melvim	Kunqla	
X2	5	-	-	-	B/p	1	Y	-													
X2	6	-	road	Y	B/p	1	Y	-													
X2	7	-	-	-	B/p	1	Y	-													
X2	8	Y	-	-	B/p	1	Y	-													
X2	9	-	-	-	B/p	1	Y	-													
X2	10	Y	-	-	B/p	1	Y	-													
X2	11	Y	-	-	B/p	1	Y	-													
X3	1	-	-	-	B/p	1	-	Y			5.7	old	1/8	edge	N	Misc reveg	W		Melvim	Kunqla	
X3	2	-	road	Y	B/p	1	Y	-			5.7	old	1/8	edge	N	Mostly misc. reveg.	W		Melvim	Kunqla	
X3	3	-	-	-	B/p	1	Y	Y			5.7	old	1/8	edge	N	Misc reveg 2 pines	W HS				

continuation  
Delete 2-8 -/not mapped on 107

2-9 OK

Summary/General Comments

2

Swan Bioplan Vegetation Mapping Data

Map Sheet Number 108

Pre Field Recorder(s) AW

Field Recorder(s)

R E M	R E M 2	X M A P	L I N E T Y P E	L I N E A R	M L U	U N I T S	U P L A N D ?	W E T L A N D ?	V I S I T ?	D E T A I L A r e a N a m e	V E G C O N	F i e l d d a t e	O B S F r o m	Y N O T A S S	D E T A I L R E C O R D	C O M M E N T S	V E G S T R U C T U R E D E N S	F C T	D O M I N A N T S		
																			1	2	3
34	-	-	-	-	B/p	1	Y	-				1/8	aerial		N	Misc reveg	W		Melvin	Kungla	
35	-	-	-	-	B/p	1	Y	-				1/8	edge		N	Misc reveg	W		Kungla		
36	-	-	-	-	B/p	1	Y	-				1/8	edge		N		F		Bemar	Eucal	Kungla
37	-	-	-	-	B/p	1	Y	-				1/8	aerial		N		F		Coxwai	Eucal	Kungla
41	-	-	-	-	B/p	1	-	Y													
42	-	-	-	-	B/p	1	-	Y													
43	-	-	-	-	B/p	1	-	Y													
44	-	-	-	-	B/p	1	Y	-													
51	Y	-	-	-	B/p	5	Y	Y		part rem has report + mapping		2-3	-1996 WFS report				W	21b	Baniti	Banoff	Nuyflo
																	W	21a	Eucmar	Acaext	Hibhyp
																	W	12	Meltra	Melpre	Melter
																	W	1b	Eucal	Xanpre	Acaext
																	HS	4	Melpre	Perell	Hypang
																	W	21b	Eucmar	Eucal	Bongra
52	-	-	-	-	B/p	3	Y	Y		"		2-3	-1996 WFS report		N		HS	13	Melbat	Meline	
																	HS	4	Melpre	Perell	Hypang
																	HS	13	Melbat	Meline	
53	-	-	-	-	B/p	2	Y	Y									W				

(part of 108 + 109 area)





5

Map Sheet Number 108

Pre Field Recorder(s) AW

Field Recorder(s) \_\_\_\_\_

Swan Bioplan Vegetation Mapping Data

R E M	R E M 2	X M A P	L I N E A R	L I N E A R	M L U	U N I T S	U P L A N D ?	W E T L A N D ?	V I S I T ?	D E T A I L A r e a N a m e	V E G C O N	F i e l d d a t e	O B S F r o m	Y N O T A S S	D E T V I S I O N R E Q D	C O M M E N T S	V E G S T R U C T U R E D E N S	F C T	D O M I N A N T S		
																			1	2	3
X75	-	-	-	-	B/P	3	Y	Y		partial egg list							W	2lb?	Banatt	Banili	Eucmar
																	HS	4	Melpro	Hypocog	Denoll
																	W	-	Eucal	Xyloc	Banatt
X76	-	-	-	-	B/P	3	Y	Y		Jeff Handwicks place	VG	1/8	E		Y		W		Banatt	Banili	Eucmar
																	W		Melrap	Melter	
																	S				
																	W				
X77	-	-	-	-	B/P	1	Y	-									W		Eucal	Eucmar	
X81	-	-	-	-	B/P	1	Y	-			D	2/8	Dist		N		W		Melpro		
																	W		Banatt	Kongla	Eucmar
X82	-	-	-	-	B/P	2	Y	-			D	4/8	edge		N	Acasem	W		Eucmar	Kongla	Banatt
																	W		Eucal	Eucmar	Apple
X83	-	-	-	-	B/P	2	Y	-			G	2/8	edge		N		W		Melap		
												2/8	aerial		N		W				
X84	-	-	-	-		1											W		Eucal		
X85	-	-	-	-		1					D/O	2/8	dist		N						

Summary/General Comments