

Ag



114

121

113

115

107

↑

↑

↑

red line here is wrong

↑ 121/2-2

↑ 122/1-1

↙

↙

→

↓

↓ 107/1-1

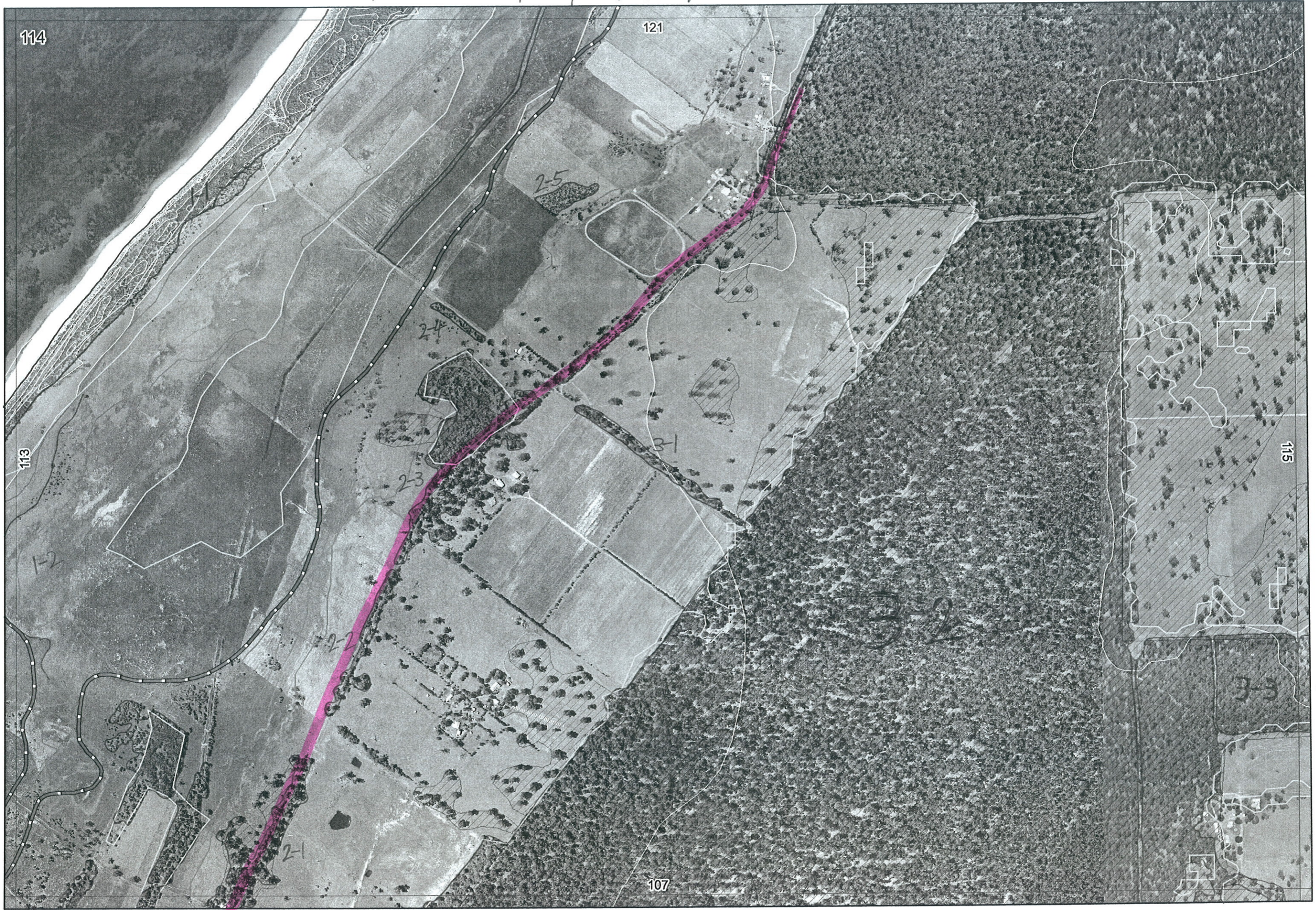
↓

↓

↓ 107/3-1

↓ 107/3-1

✓



114

121

113

115

107

107/1-1

107/3-1

chade w/road

↑ is wrong

↑ 121/2-2

↑ 122/

↑

↑

↑

↓

→

↙

↙

↓

↓

Map Sheet Number 114

Pre Field Recorder(s) MW

Field Recorder(s) MW

Swan Bioplan Vegetation Mapping Data

R E M	R E M2	X M A P	L I N E T Y P E	L I N E A R	M L U	U N I T S	U P L A N D ?	W E T L A N D ?	V I S I T ?	D E T A I L A r e a N a m e	V E G C O N	F i e l d d a t e 2 0 0	O B S F r o m	Y N O T A S S	D E T A I L V I S I T R E Q D	C O M M E N T S	V E G S T R U C T U R E D E N S	F C T	D O M I N A N T S		
																			1	2	3
/2	1	Y	road	Y	S	1	Y	-			D/CO	4	E				F		Eucgom	Agofle	
/2	2	-	road	Y	S	1	Y	-			D/CO	4	E				F		Eucgom	Agofle	
/2	2	-	road	Y	S	1	Y	-			D/CO	4	E			Alybur, Farioqued Alyxia buxifolia, Adriana quadripartita	F		Eucgom	Agofle	① Melha Melha Eucrud Eucrud
/2	3	-	road	B	S	1	Y	-			D/CO	4	E				W		① Eucgom	Peppi	② Melha
/2	4	-	fence	Y	S	1	Y	-			D/CO	4	D				W		Melha	Eucrud	
2	5	-	-	-	S	1	Y	-			D/CO	4	D				W		Eucgom	Peppi	
/3	1	-	fence	Y	S	1	Y	-			D/CO	4	D			mixed with plantings	W		Eucgom	Peppi	
/3	2	Y	-	-	S	1	Y	-		Ludlow front fence	D/CO		aerial				F	25	Eucgom	Agofle	
/3	3	Y	-	-	S	1	Y	-			D/CO	4/5	aerial		N		W	25	Eucgom	Peppi	
/1	2	Y	-	-	Q	2	-	Y			D/CO	4/8	D		W		W		Eucrud	Melha	
/1	1	Y	coast	Y	Q	2	Y	-			E/VA	4/4	VE				F	30b	Agofle	Spiglo	
/1	3	Y	-	-	Q	1	-	Y			D/CO		aerial	MW	N		H	-	Samphire spp.		
/1	4	Y	-	-	Q	1	-	Y			D/CO		aerial	MW	N		H	-	Samphire spp.		

Summary/General Comments