

↑ 122/1-1

↑ 122/4-5

Ag



115

122

116

114

114/3

1-3

1-2

1-4

1-5

1-6

4-4

4-2

4-5

4-6

4-1

3-3

3-1

3-4

3-5

3-6

3-6

2-6

2-4

2-3

2-5

2-1

2-2

108

↓ 108/5-1

↓ 108/7-1

← 116/6-6 ✓

↓

↓

↓

→

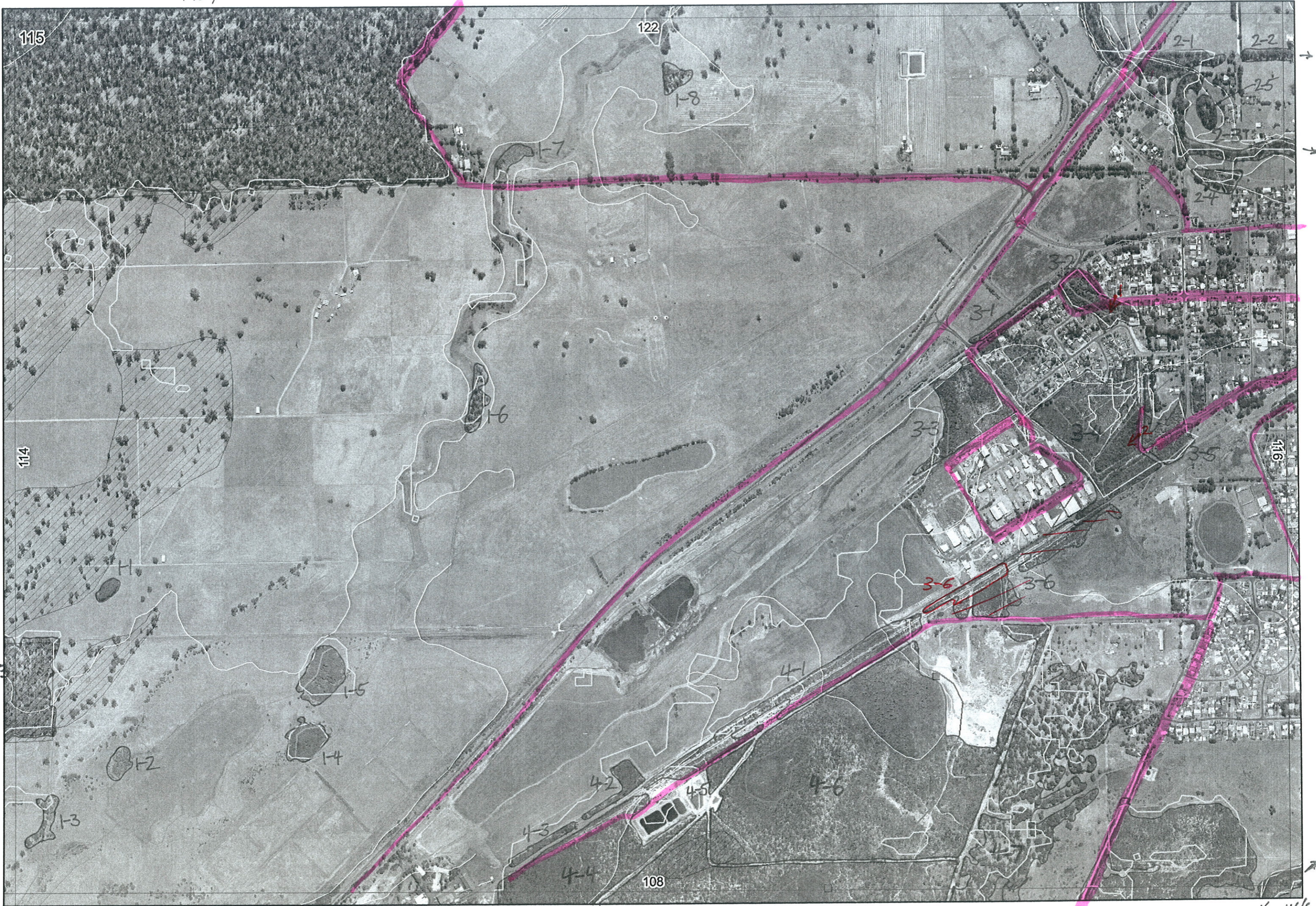
→

→

✓

↑ 122/1-1

↑ 122/4-5



115

122

116

114

108

114/3

116/6-6

108

108

1-2

1-4

1-5

1-3

4-2

4-5

4-6

4-3

4-4

4-1

3-6

3-6

3-3

3-1

2-4

2-5

2-2

2-1

1-8

1-7

1-6

→

→

→

↙

↓

↘

↓

↓

↙

1

R E M	R E M 2	X M A P	L I N E T Y P E	L I N E A R	M L U	U N I T S	U P L A N D ?	W E T L A N D ?	V I S I T ?	D E T A I L A r e a N a m e	V E G C O N	F i e l d d a t e 2 0 0	O B S F r o m	Y N O T A S S	D E T A I L V I S I T R E Q D	C O M M E N T S	V E G S T R U C T U R E D E N S	F C T	D O M I N A N T S		
																			1	2	3
✓1	1	-	-	-	B/p	1	-	Y			D	1/8	aerial				W		Melvim	Melrha	
✓1	2	-	-	-	B/p	1	-	Y			D/cd	1/8	dist		N		W		Melrha		
✓1	3	-	-	-	B/p	1	-	Y			D/cd	1/8	aerial		N		W		Melrha		
✓1	4	-	-	-	B/p	1	-	Y			D/cd	1/8	v. dist		N		W		Melvim	Melrha	
✓1	5	-	-	-	B/p	1	-	Y			D/cd	1/8	v. dist		N		W		Melvim	Melrha	
✓1	6	-	-	-	B/p	1	-	Y			cd	1/8	edge		N		W		Eucnd	Melrap	
✓1	7	-	-	-	B/p	1	-	Y			cd	1/8	-		N		S		Typha	Willow	
✓1	8	-	-	-	B/p	1	Y	-			D/cd	1/8	aerial		N		F		Eucnd	Eucal	
✓2	1	-	channel	Y	P	1	Y	Y			D	1/8	dist		N		F		Euc		
✓2	2	Y	road	Y	P	1	Y	-			D/cd	1/8	edge				F		Eucal	Eucnd	
✓2	3	Y	channel	Y	P	1	-	Y			D	1/8	dist				F		Eucnd	Eucal	Melrap
✓2	4	-	-	-	P	1	Y	-			D	1/8	"				F		Eucnd	Eucal	Melrap
✓2	5	-	-	-	P	1	Y	-			D	1/8	"				F		Eucnd	Eucal	Melrap
✓2	6	-	-	-	P	1	Y	-			D	1/8	"				F		Eucnd	Eucal	Melrap
✓3	2	-	road	Y	B/p	2	-	Y		SP 151 has creek line	VG	1/8	withi		N	The Eucal community has some slightly dry spots with Acacia extensa & Jarrah.	F		Eucal	Eucnd	Melpre
✓3	1	-	-	-	B/p	1	-	Y			G	1/8	edge		N	Geoglan, WRP	F		Eucnd	Melpre	Peppi
✓3	3	-	-	-	B/p	3	Y	Y		in GBRs report	E						W				

The Eucal community has some slightly dry spots with Acacia extensa & Jarrah.

① Eucal
② Eucnd
Eucnd Melrha Melpre

3.2 Eucal? ✓ Yes
Put as CORCAL.
Detail - Not sure what it says
comments - Not sure what it says
Dominant confysed with ① ②

2

Map Sheet Number 115

Pre Field Recorder(s) AW

Field Recorder(s)

Swan Bioplan Vegetation Mapping Data

R E M	RE M2	XM AP	LIN TYPE	L I N E A R	M L U	U N I T S	U P L A N D ?	W E T L A N D ?	V I S I T ?	DETAIL/ Area Name	VEG CON	Field date 200_	OBS From	YNOTASS	D E T V I S R E Q D	COMMENTS	VEG STRU C DENS	FCT	DOMINANTS		
																			1	2	3
√3	4	-	-	-	B/p	4	Y	Y		veg map + part spp. list	2	27/2	within		Y	made moni/melika com: ④ Hypang, Kungla, Melpre ④ Hypang, Kungla, Melpre ④ Schizoneura? ignore Melpre	W	21b?	Eucmar	Nuyflo	Kungla
																	HS	4	Perell	Hypang	Hyper
																	F	?	Eucal	Melika	Melpre
√3	5	-	-	-	B/p	2	-	Y			0	1/8	edge		N		W		Melpre	Melika	
																	W		Eucal	Kungla	Eucmar
√3	6	-	road?	Y	B/p	1	Y	Y			0-1	1/8	dist		N	roadly cleared	W		Kungla		
√4	1	-	road?	Y	B/p	2	Y	Y			G	1/8	E		N	④ ignore change Ginglout Melpre	W		Barratt	Kungla	Banili
																	W		Melika	Melpre	Melton
																	W		Appi	③ Melpre	Asfas Eucal
√4	2	-	road?	Y	B/p	2	-	Y			G0	1/8	E		N		W				
√4	3	-	road?	Y	B/p	1	-	Y									W				
√4	4	Y	-	-	B/p	3	Y	Y			G	1/8	E		N		W		Eucal	Melika	Asfas
																	W		Kungla	Asfas	Hypang Mycal org
																	W		Banatt	Eucmar	Kungla
																	W		Appi	Kungla	Barratt
√4	5	-	-	-	B/p	1	Y	-			G	1/8	E		N	very rare splashed flowers	W		Banatt	Banili	Kungla
√4	6	-	-	-	B/p	3	Y	Y			G	1/8	E				W		Eucal	Melpre	
																	W		Melpre	Melika	Melton Metter

Summary/General Comments

3

Map Sheet Number 115

Pre Field Recorder(s) AW

Field Recorder(s)

Swan Bioplan Vegetation Mapping Data

R E M	R E M 2	X M A P	L I N E T Y P E	L I N E A R	M L U	U N I T S	U P L A N D ?	W E T L A N D ?	V I S I T ?	D E T A I L / A r e a N a m e	V E G C O N	F i e l d d a t e 200_	O B S F r o m	Y N O T A S S	D E T A I L R E Q D	C O M M E N T S	V E G S T R U C / D E N S	F C T	D O M I N A N T S		
																			1	2	3
✓4	7	Y	-	-	8/p	3	Y	Y		spp-list for wetland notebook 11/2/05							F	13	melrha	Mel kat	Astfas
																	W		Mel pre	Eucal	
																	W		Eucal	Agelle	
✓3	7	-	-	-	8/p	1	Y	-					veg 1/8 edge	N	Z PLP	? What is this?	W		Bonett	Kungla	Eucal

Summary/General Comments