

109/1-2

109/2-1



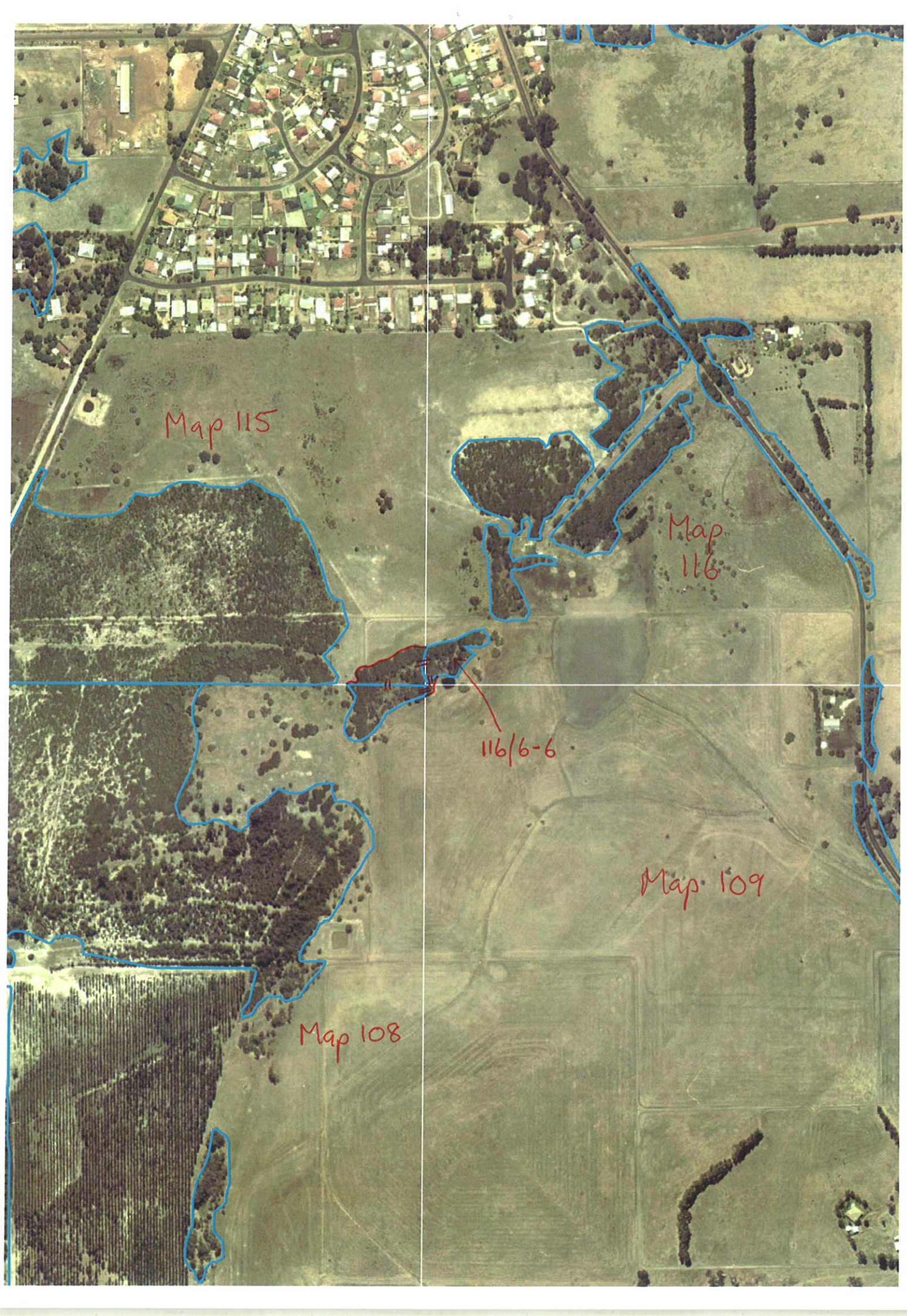
Map 115

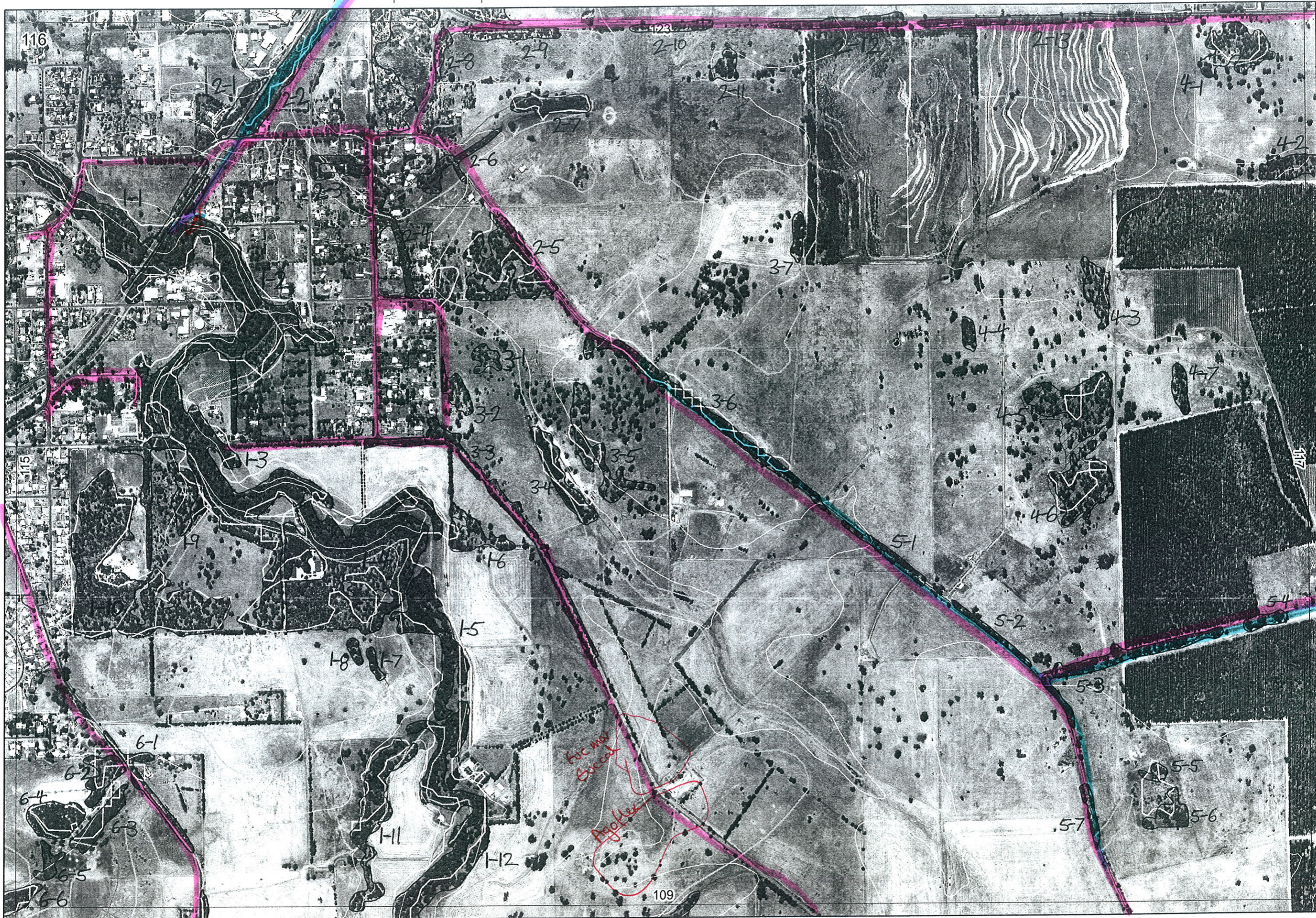
Map 116

116/6-6

Map 109

Map 108





116

115

117

115/1

109/1-2

109/2-1

FOR MAY SURVEY

ANOTHER

1-12, 19-24, 25-37, 38-47, 51-57, 61-66

1

R E M	RE M2	XM AP	LIN TYPE	L I N E A R	M L U	U N I T S	U P L A N D ?	W E T L A N D ?	V I S I T ?	DETAIL/ Area Name	VEG CON	Field date 200_	OBS From	YNOTASS	D E T V I S R E Q D	COMMENTS	VEG STRU CTURE DENS	FCT	DOMINANTS		
																			1	2	3
✓1	1	-	channel	Y	P	2	Y	Y				1/8	edge		N		F		Euc rud	Agofle	Mulrap
												3/8					W		Euc cel		
✓1	2	-	channel	Y	P	2	Y	Y		Capel river	D	3/8	with			Cast. Sil. Gum? intro.	F		Euc rud	Agoflex	Agoflex
											D	3/8	with				W		Euc cal		
✓1	3	-	channel	Y	P	2	Y	Y		GBRS	D	3/8	Edge				W		Euc cal	Agoflex	
											D	3/8	"				F		Euc rud	Agoflex	
✓1	4	-	channel	B	B/p	3	Y	Y		Bennett report	G-VG	30/3	edge		N	Bennett plot CAP01	F	1b?	Euc cal	Agofle	
																Bennett plot CAP02, CAP03	W	2la	Euc man	Euc cal	Bennett
																sp. list	F	-	Euc rud	Euc cal	Agofle
																	F		Euc cal		
✓1	5	-	channel	Y	P	2	-	Y				1/6	3/8	1/8			W		Euc rud		
✓1	6	-	-	-	P	1	Y	-				1/6	3/8	dist			W		Euc rud		
✓1	7	-	-	-	B/p	1	Y	-	N	Bennett report	D-CD			report 18/10/05	N		W	-	Agofle		
✓1	8	-	-	-	B/p	1	Y	-	N	"	D-CD			report 18/10/05	N		W	-	Agofle		
✓1	9	-	-	-	B/p	1	Y	-	N	"	D-CD			report 18/10/05	N		W	-	Euc cal	Agofle	
✓1	10	-	-	-	B/p	2	Y	-	N	"	D-G	30/3	edge		N	Bennett plot CAP05 + sp list	W	-	Euc man	Bennett	Kungla
																	W	-	Euc cal	Agofle	
✓1	11	Y	channel	Y	P	1	-	Y		Capel river trib	D	3/8	dist				W		Euc cel	Agoflex	
✓1	12	Y	channel	Y	P	1	-	Y		Capel river	D	3/8	dist				F		Euc cal	Agoflex	

Summary/General Comments

2

Map Sheet Number 116

Pre Field Recorder(s) AW

Field Recorder(s)

Swan Bioplan Vegetation Mapping Data

R E M	RE M2	XM AP	LIN TYPE	L I N E A R	M L U	U N I T S	U P L A N D ?	W E T L A N D ?	V I S I T ?	DETAIL/ Area Name	VEG CON	Field date 200/	OBS From	YNOTASS	D E T V I S R E O D	COMMENTS	VEG STRU C I D E N S	FCT	DOMINANTS		
																			1	2	3
✓21	-	road	Y	P	1	-	Y				G/	3/8	edge				W		Euc cal		
✓22	Y	road	Y	P	3	Y	Y				a	3/8	edge			partial spp list	F		Euc cal		
																lep long gardens	W		Mel vici Eucal	Mel vici Apo flex	Mel preiss
																	F		Eucal		
23	-					P	1	Y											Mel rhoph	Mel vici	
✓24	-	road	Y	P	1	Y					D/CD	3/8	edge				W		Mel preiss	Apo flex	
✓25	-	road	B	P	2	Y					D/CD	3/8	edge				W		Euc cal	Euc mer	
✓26	-	channel	Y	P	1	-	Y				CD	3/8	edge				W		Mel preiss	Apo lin	Apo flex Euc cal
✓27	-	channel	Y	P	1	-	Y				D/CD	3/8	dist				W		Apo flex		
✓28	-					P	1	Y			CD	3/8	edge				W		Kun glab	Dasy bron	
✓29	-	road	Y	P	1	Y					D/CD	3/8	edge				W		Ban att	Kungia	
✓210	-	road	Y	B/P	1	Y					D	3/8	edge				F		Mel preiss	Kingia	
✓211	-					B/P	1	Y			D/CD	3/8	edge				W		Eucal	Euc cal	
✓212	-	road	Y	B/P	1	Y					D	3/8	edge				F		Eucal		
✓213	-	road	Y	B/P	2	Y					D	3/8	edge				F		Eucal	⑤ Mel preiss, ③ Apo flex	
✓31	-					P	1	Y			D/CD	3/8	edge				W		Mel rhoph		
✓32	-					P	2	Y			D/CD	3/8	edge				W		Euc cal		
✓33	-	road	Y	P	1	Y					D	3/8	edge				F		Mel preiss	Euc mer	Vmi junc
✓34	-					P	1	Y			D	3/8	dist				F		Apo flex		

Summary/General Comments

3

R E M	RE M2	XM AP	LIN TYPE	L I N E A R	M L U	U N I T S	U P L A N D ?	W E T L A N D ?	V I S I T ?	DETAIL/ Area Name	VEG CON	Field date 2002	OBS From	YNOTASS	D E T V I S I O R E A D	COMMENTS	VEG STRU CTURE DENS	FCT	DOMINANTS		
																			1	2	3
✓35	-	-	-	-	P	1	Y	-			D/CD	3/8	dist				W		Eucal		
✓36	-	road	Y	P	1	Y	-				D	3/8	edge		Kingia		F		Eucal	Euc. mac	② Ho flex
✓37	-	-	-	-	B/P	1	Y	-			D/CD	3/8	dist				F		Agatle		
✓41	-	-	-	-	B/P	1	Y	-			D/CD	3/8	edge				W		Agatle	Kingia	
✓42	Y	-	-	-	B/P	1	Y	-			D/CD	3/8	dist				W		Eucal	Ho flex	
✓43	-	-	-	-	B/P	1	Y	-			D/CD	3/8	dist				W		Eucal		
✓44	-	-	-	-	B/P	1	Y	-			D/CD	3/8	dist				F		Eucal		
✓45	-	-	-	-	B/P	1	Y	-			D/CD	3/8	dist				W		Eucal		
✓46	-	-	-	-	B/P	1	Y	-			D/CD	3/8	dist				F		Eucal		
✓47	-	-	-	-	B/P	1	Y	-			D/CD	3/8	edge				F		Eucal		
✓51	-	road	Y	B/P	1	Y	-				D/CD	3/8	edge				F				
✓52	-	road	Y	B/P	1	Y	-				D/CD	3/8	edge		Xylomelum Heteroprotista	Kingia	F		Eucal	Euc. mac	Ben. G.
✓53	-	road	Y	B/P	2	Y	-				D/CD	3/8	edge				W		Eucal		
✓54	-	road	Y	B/P	1	Y	-				D/CD	3/8	edge				W		Eucal	Agatle	
✓55	-	-	-	-	B/P	1	Y	-			D/CD	3/8	dist				W		San. str.	Kingia	
✓56	-	-	-	-	B/P	1	Y	-			D/CD	3/8	dist				W		Eucal		
✓57	-	road	Y	B/P	1	Y	-				D/CD	3/8	edge								

Summary/General Comments

4

Map Sheet Number 116

Pre Field Recorder(s) AW

Field Recorder(s)

Swan Bioplan Vegetation Mapping Data

R E M	RE M2	XM AP	LIN TYPE	L I N E A R	M L U	U N I T S	U P L A N D ?	W E T L A N D ?	V I S I T ?	DETAIL/ Area Name	VEG CON	Field date 200_	OBS From	YNOTASS	D E T V I S R E Q D	COMMENTS	VEG STRU CTURE/ DENS	FCT	DOMINANTS		
																			1	2	3
✓61	-	-	road	Y	B/P	2	Y	Y			D/07	3/8	edge			F		Eucal	Mel vheph	Mel vim	Hak Vdr
											P/07	3/8	edge			SC					
✓62	-	-	-	-	B/P	2	Y	-			D	3/8	edge		WVP recorded in devel report Dead banksia stem	F		Agofle	Eucal		
											D	3/8	edge			W		Euemar	Kungla		
✓63	-	-	-	-	B/P	2	Y	Y			D	3/8	dist			F		Agofle			
												3/8	dise			W		Mel vim	Mel vheph		
✓64	-	-	-	-	B/P	2	Y	-			D	3/8	aerial			F		Agofle			
											D	3/8	aerial			SC		Kungla			
✓65	-	-	-	-	B/P	1	Y	-			D	3/8	aerial			W		Agofle			
✓66	Y	-	-	-	B/P	2	Y	Y			D	3/8	dist			F		Agofle			
																		Eucal	Mel vheph		

Summary/General Comments