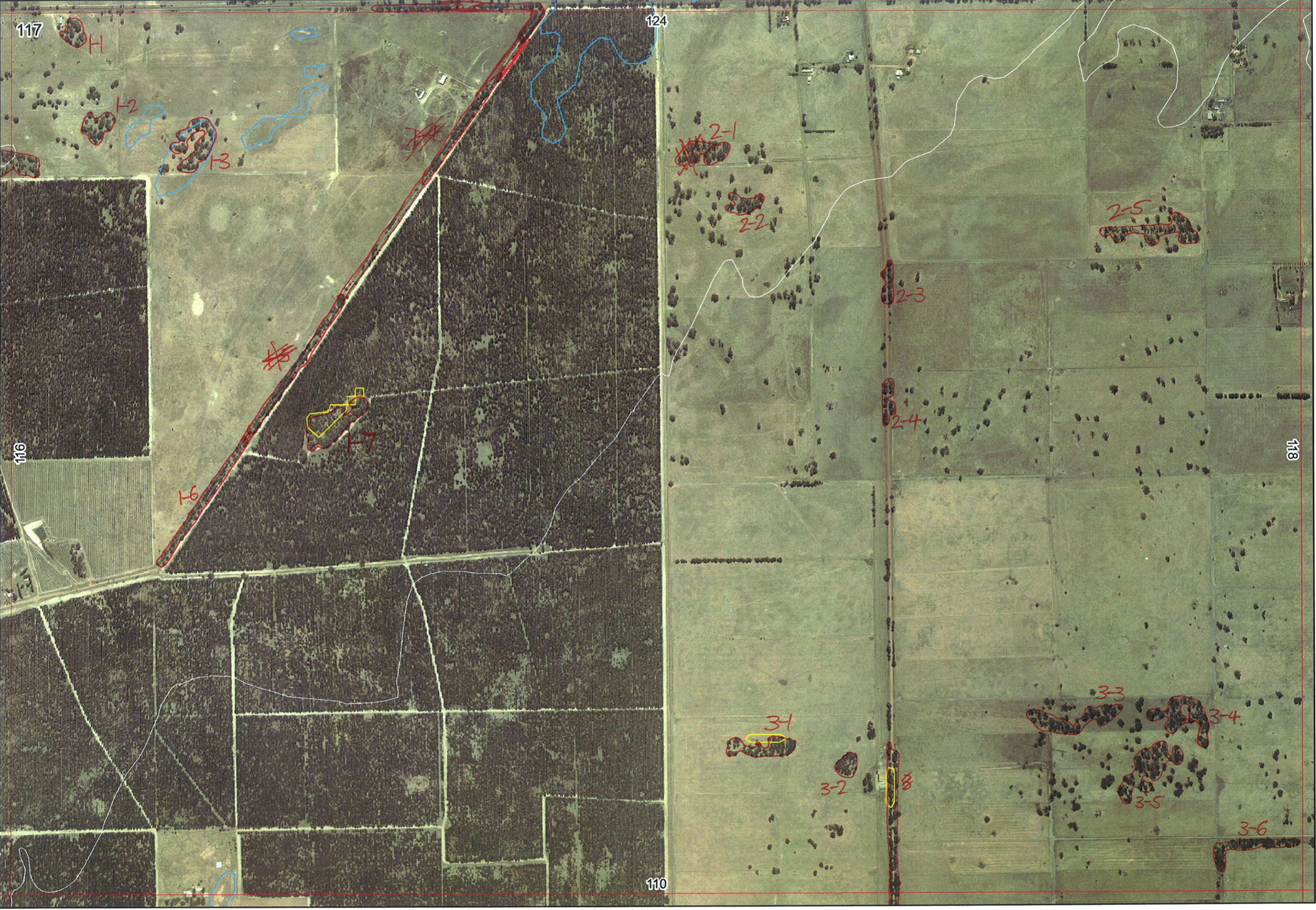


卒 ↑ 卒



116/4-2 ←

117

124

116

118

110

↓ 110/2-4



124  
↑

124

117

H

H2

H3

H4

2-1

2-2

2-5

2-3

2-4

118

116

1-5

1-6

3-1

3-2

3-3

3-4

3-5

3-6

110

↓  
110/2-4

116/ ←



R. Clark

Swan Bioplan Vegetation Mapping Data

Map Sheet Number 117

Pre Field Recorder(s) AW

Field Recorder(s)

R E M	R E M 2	X M A P	L I N E T Y P E	L I N E A R	M L U	U N I T S	U P L A N D ?	W E T L A N D ?	V I S I T ?	D E T A I L A r e a N a m e	V E G C O N	F i e l d d a t e	O B S F r o m	Y N O T A S S	D E T A I L V I S I T R E Q U I R E D	C O M M E N T S	V E G S T R U C T U R E D E N S	F C T	D O M I N A N T S			
																			1	2	3	
✓11	-	-	-	-	B/p	1	Y	-			D/co	3/8	dist				W		Agolle	Eucal		
✓12	-	-	-	-	B/p	1	Y	-			D/co	3/8	dist				W		Agolle	Eucal		
✓13	-	-	-	-	B/p	1	Y	-			D/co	3/8	dist				W		Eucal	Agoflex		
✓14	-	-	road	Y	B/p	1	Y	-									F		Eucal			
✓15	-	-	road	Y	B/p	1	Y	-								Xyomelum Kingia Perlong Ac. semitru Mel preis.	F		Eucal	Banlit	Mel preis	③ Euc max Mel thymoid
✓16	-	-	road	Y	B/p	3	Y	-			D/G	3/8	edge				F		Eucal			
✓17	-	-	-	-	B/p	1	Y	-			D/co	3/8	dist			Mostly cleared	W		Eucal			
✓21	-	-	-	-	P	1	Y	-			CD	3/8	dist				W		Eucal			
✓22	-	-	-	-	P	1	Y	-			CD	3/8	dist				W		Eucal			
✓23	-	-	road	Y	P	1	Y	-			D/P	3/8	dist			Mel preis.	W		Eucal			
✓24	-	-	road	Y	P	1	Y	-			CD	3/8	edge				W		Eucal			
✓25	-	-	-	-	P	1	Y	-			CD	3/8	dist			Delete 2-5 - not digitized by Ag	W		Eucal			
✓31	-	-	-	-	P	1	Y	-			D/co	3/8	dist				F		Eucal	Kingia		
✓32	-	-	-	-	P	1	Y	-			D/co	3/8	dist				F		Eucal	Kingia		
✓33	-	-	-	-	P	1	Y	-			D/co	3/8	dist				W		Eucal			
✓34	-	-	-	-	P	1	Y	-			D/co	3/8	dist				W		Eucal			
✓35	-	-	-	-	P	1	Y	-			D/co	3/8	dist				W		Eucal			
✓36	-	-	fence	Y	P	1	Y	-			D/co	3/8	vernal				F		Eucal			

Summary/General Comments