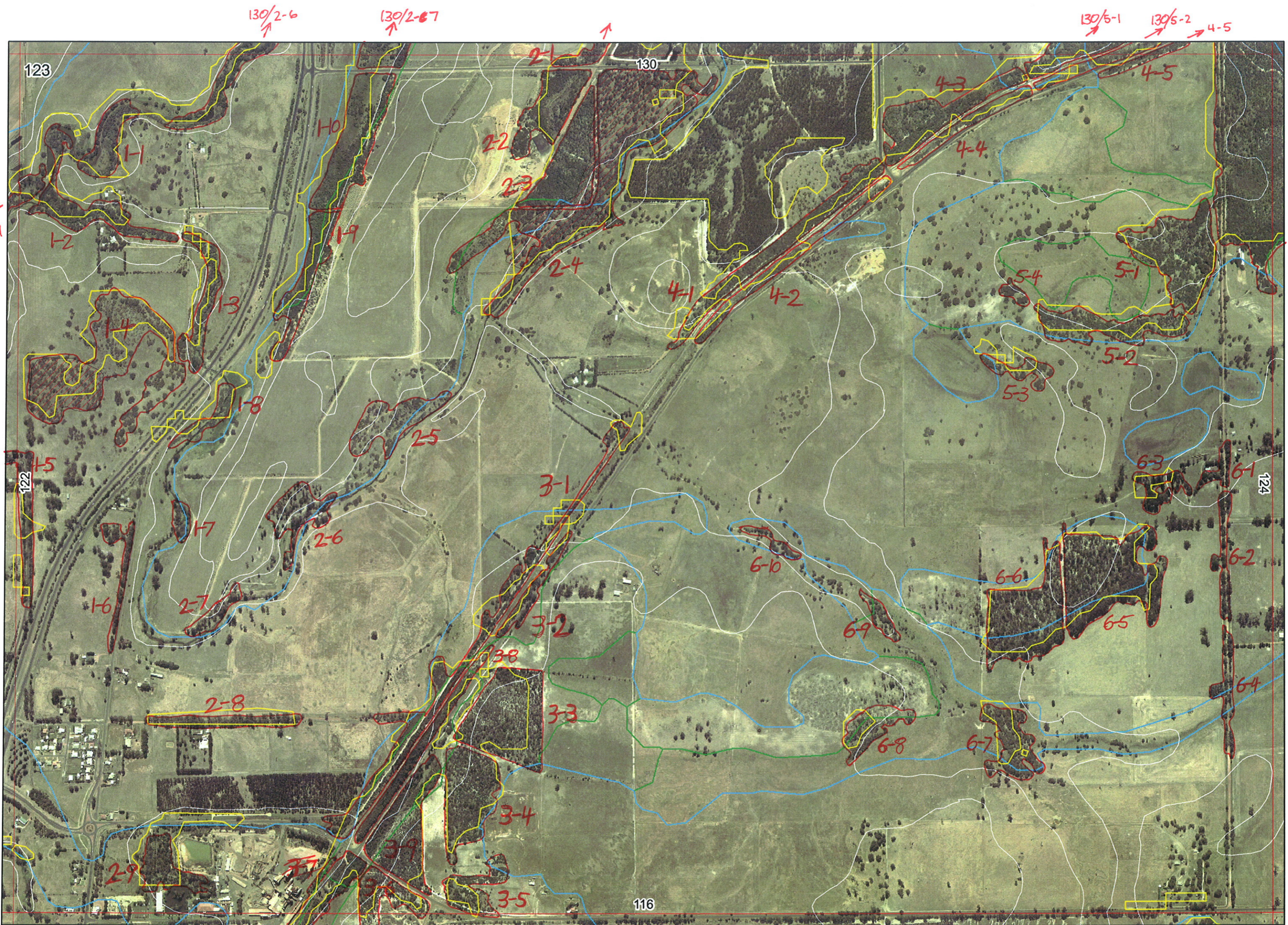


Ag
24/1



123

130

124

116

130/2-6

130/2-67

130/5-1

130/5-2

4-5

122/41

1-5

116/2-2

3-6

1-1

1-2

1-4

1-8

1-5

1-7

1-6

2-7

2-8

2-9

3-7

2-6

116/2-2

3-6

2-2

2-3

2-4

2-5

2-6

2-7

2-8

2-9

3-7

116/2-2

3-6

3-1

3-2

3-3

3-4

3-9

3-5

116/2-2

3-6

4-1

4-2

4-4

5-3

5-2

5-4

5-1

6-9

6-10

6-6

6-5

6-2

6-4

6-3

6-1

6-2

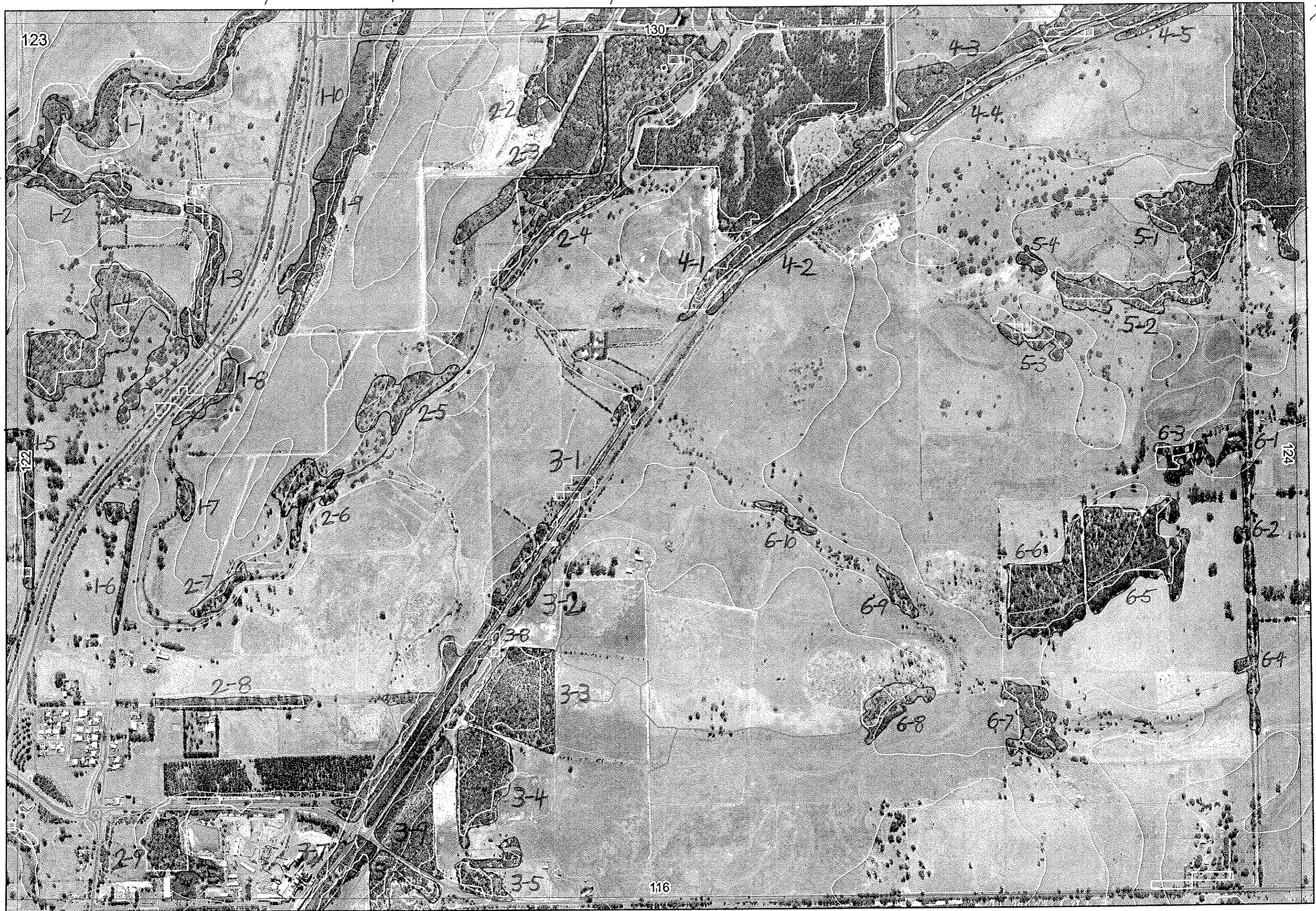
6-4

6-7

6-8

116/2-2

3-6



123

130

136

124

124

122

122

122

1-1

1-2

1-3

1-4

1-5

1-6

1-7

1-8

1-9

1-10

1-11

1-12

1-13

1-14

1-15

1-16

1-17

1-18

1-19

1-20

1-21

1-22

1-23

1-24

1-25

1-26

1-27

1-28

1-29

1-30

1-31

1-32

1-33

1-34

1-35

1-36

1-37

1-38

1-39

1-40

1-41

1-42

1-43

1-44

1-45

1-46

1-47

1-48

1-49

1-50

1-51

1-52

1-53

1-54

1-55

1-56

1-57

1-58

1-59

1-60

1-61

1-62

1-63

1-64

1-65

1-66

1-67

1-68

1-69

1-70

1-71

1-72

1-73

1-74

1-75

1-76

1-77

1-78

1-79

1-80

1-81

1-82

1-83

1-84

1-85

1-86

1-87

1-88

1-89

1-90

1-91

1-92

1-93

1-94

1-95

1-96

1-97

1-98

1-99

1-100

1-101

1-102

1-103

1-104

1-105

1-106

1-107

1-108

1-109

1-110

1-111

1-112

1-113

1-114

1-115

1-116

1-117

1-118

1-119

1-120

1-121

1-122

1-123

1-124

1-125

1-126

1-127

1-128

1-129

1-130

1-131

1-132

1-133

1-134

1-135

1-136

1-137

1-138

1-139

1-140

1-141

1-142

1-143

1-144

1-145

1-146

1-147

1-148

1-149

1-150

1-151

1-152

1-153

1-154

1-155

1-156

1-157

1-158

1-159

1-160

1-161

1-162

1-163

1-164

1-165

1-166

1-167

1-168

1-169

1-170

1-171

1-172

1-173

1-174

1-175

1-176

1-177

1-178

1-179

1-180

1-181

1-182

1-183

1-184

1-185

1-186

1-187

1-188

1-189

1-190

1-191

1-192

1-193

1-194

1-195

1-196

1-197

1-198

1-199

1-200

1-201

1-202

1-203

1-204

1-205

1-206

1-207

1-208

1-209

1-210

1-211

1-212

1-213

1-214

1-215

1-216

1-217

1-218

1-219

1-220

1-221

1-222

1-223

1-224

1-225

1-226

1-227

1-228

1-229

1-230

1-231

1-232

1-233

1-234

1-235

1-236

1-237

1-238

1-239

1-240

1-241

1-242

1-243

1-244

1-245

1-246

1-247

1-248

1-249

1-250

1-251

1-252

1-253

1-254

1-255

1-256

1-257

1-258

1-259

1-260

1-261

1-262

1-263

1-264

1-265

1-266

1-267

1-268

1-269

1-270

1-271

1-272

1-273

1-274

1-275

1-276

1-277

1-278

1-279

1-280

1-281

1-282

1-283

1-284

1-285

1-286

1-287

1-288

1-289

1-290

1-291

1-29

1

Map Sheet Number 123

Pre Field Recorder(s) AW

Field Recorder(s)

Swan Bioplan Vegetation Mapping Data

R E M	RE M2	XM AP	LIN TYPE	L I N E A R	M L U	U N I T S	U P L A N D ?	W E T L A N D ?	V I S I T ?	DETAIL/ Area Name	VEG CON	Field date 200_	OBS From	YNOTASS	D E T Y I S R E Q D	COMMENTS	VEG STRU CI DENS	FCT	DOMINANTS		
																			1	2	3
✓1	1	-	channel	Y	P	1	-	Y			D	serial	AW		N		W	-	Eucrad	Mel/ho	
✓1	2	-	channel	Y	P	1	-	Y			D	serial	AW		N		W	-	Eucrad	Mel/ho	
✓1	3	-	channel	Y	P	1	-	Y			D	serial	AW		N		W	-	Eucrad	Mel/ho	
✓1	4	-	-	-	P	2	Y	Y			D/CO	10/8	dist		Y	melvini comm maybe interesting	W	-	Eucrad	Mel/ho	
✓1	5	Y	road	Y	P	1	Y	-			D/CO	10/8	dist		N		W	-	Eucrad		
✓1	6	-	road	Y	P	1	Y	-			D/CO	10/8	dist		N		W	-	Eucrad		
✓1	7	-	channel	Y	P	1	-	Y			D/CO		serial		N		W	-	Eucrad	Mel/ho	
✓1	8	-	channel	Y	P	1		Y			D/CO	10/8	dist		N	maybe enhanced with native grass planting - ?	W	-	Eucrad	Mel/pre	Agotie
✓1	9	-	-	-	P	1	-	Y			G	11/8	dist		N		W	-	Eucrad	Mel/pre	Agotie
✓1	10	-	-	-	P	2	-	Y			G	11/8	serial	AW	N		S	-	Juncus sp?		
2	1	Y	-	-	S	1	-	Y									HS	-			
2	2	-	-	-	S	1	-	Y										-			
2	3				S													-			
2	4				S	2	Y	Y										-			
2	5	-	channel	Y	S	1	-	Y									W	-	Eucrad		
2	6	-	channel	Y	P	1											W	-	Mel		

Summary/General Comments

2

Swan Bioplan Vegetation Mapping Data

Map Sheet Number 123

Pre Field Recorder(s) AW

Field Recorder(s) _____

R E M	RE M2	XM AP	LIN TYPE	L I N E A R	M L U	U N I T S	U P L A N D ?	W E T L A N D ?	V I S I T ?	DETAIL/ Area Name	VEG CON	Field date 200_	OBS From	YNOTASS	D E T V I S R E Q D	COMMENTS	VEG STRU CTURE DENS	FCT	DOMINANTS		
																			1	2	3
27	-		channel	Y	P	1	-	Y									W		Euocat		
28	-		road	Y	P	1	Y	-			D/CD	airial			N		F	-	Euocat		
29	-				P	1	Y	-			CD/D	1/8 dist			N		W	-	Euocat		
31	-		road	Y	B/P	3	Y	Y													
32	-		road	Y	B/P	1	Y	-									W				
33	-				B/P	1	Y	-									W		Banatt		
34	-				B/P	1	Y	-									W		Banatt		
35	Y				B/P	1	Y	-			D	3/8 edge			N		W		Banatt	Kungluf	Baniti
36	Y				P	1	Y	-			D/CD	3/8 edge			N	bottom half of run is CD - Kungluf, Evemar, Nuyflo	W		Kunglo	Banatt	Euemar
41	-		road	Y	B/P	3	Y	Y													
42	-		road	Y	B/P	2	Y	Y													
43	-		road	B	B/P	2	-	Y													

Callanic

Summary/General Comments
38 - road Y P 2 Y Y

3

Map Sheet Number 123

Pre Field Recorder(s) AW

Field Recorder(s)

Swan Bioplan Vegetation Mapping Data

R E M	RE M2	XM AP	LIN TYPE	L I N E A R	M L U	U N I T S	U P L A N D ?	W E T L A N D ?	V I S I T ?	DETAIL/ Area Name	VEG CON	Field date	OBS From	YNOTASS	D E T V I S I O N R E Q D	COMMENTS	VEG STRU C/DENS	FCI	DOMINANTS				
																			1	2	3		
44	-	road	Y	B/P	1	Y	-																
45	Y	road	Y	B/P	1	Y	-										W						
51	-	-	-	B/P	1	Y											W						
52	-	-	-	B/P	1	-	Y										W						
53	-	-	-	B/P	1	-	Y										W						
54	-	-	-	B/P	1	-	Y										W				Eucal		
61	-	road	Y	B/P	1	Y	-										W				Eucal		
62	-	road	Y	B/P	1	Y	-										W				Eucal		
63	-	-	-	B/P	1	Y	-										W				Eucal		
64	-	road	Y	B/P	1	Y	-																
65	-	-	-	B/P	2	Y	Y																
66	-	-	-	B/P	2	Y	Y																
67	-	-	-	B/P	2	Y						0 3/3	dist				W				Kunglo	Eucmor	Bonatt
68	-	-	-	B/P	1	Y	-					P/CO	3/8	dist	N		W				Mel		
69	-	channel	Y	B/P	1	-	Y										W				Mel		
610	-	channel	Y	B/P	1	-	Y										W				Kunglob	Bonatt	Eucmor
Summary/General Comments																							
39	-	-	-	P	2	Y	Y										W						

Old Diakelation record from here