



133

139

132

134

126

1-1

1-2

1-3

1-4

1-6

1-5

3-1

2-2

2-3

2-4

2-5

4-3

4-2

4-1

4-4

4-5

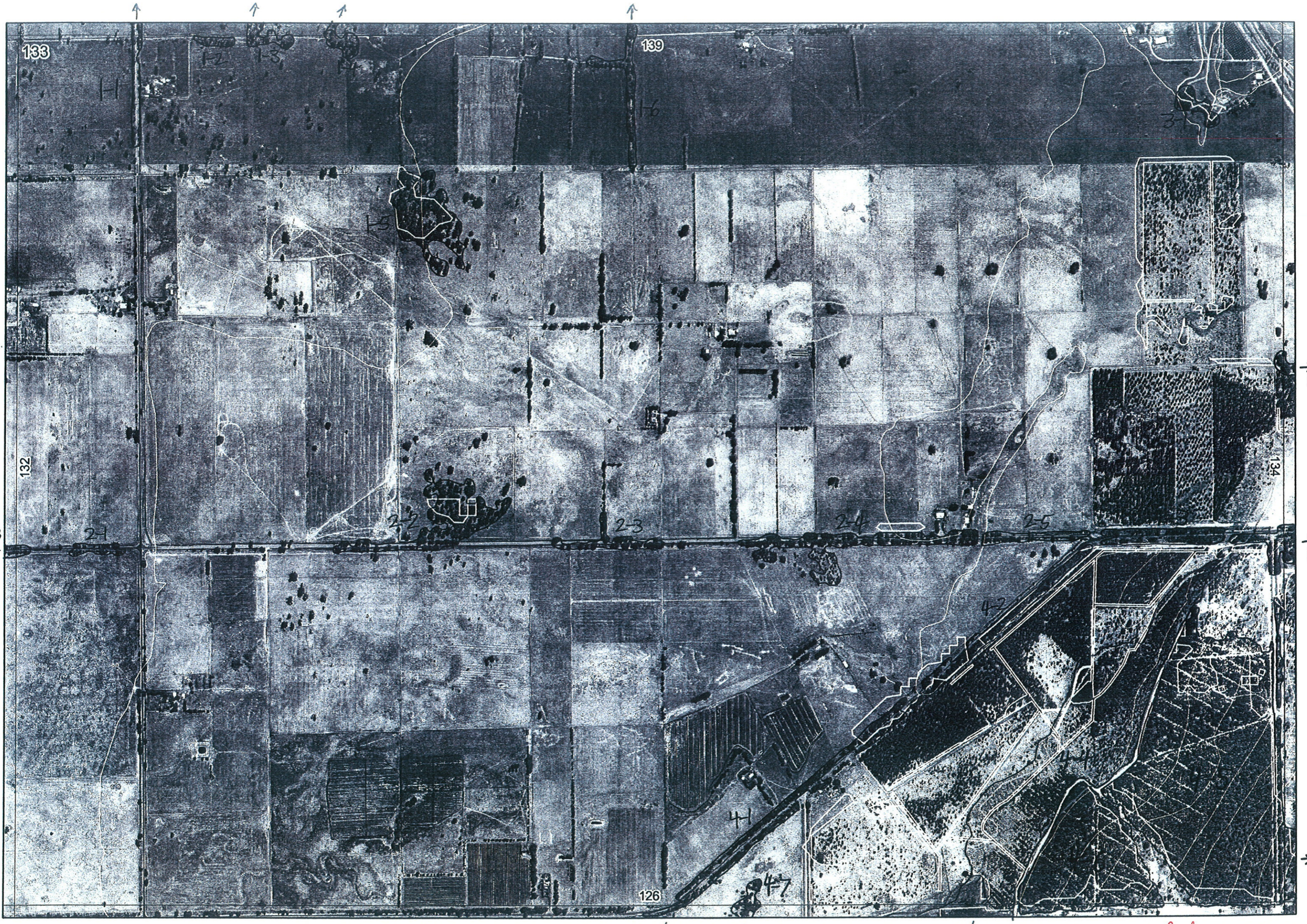
4-6

4-7

132/3-3

134/1-3

134/1-6



Agdept 12/9/06

2

Map Sheet Number 133

Pre Field Recorder(s) AW

Field Recorder(s)

Swan Bioplan Vegetation Mapping Data

R E M	R E M 2	X M A P	L I N E T Y P E	L I N E A R	M L U	U N I T S	U P L A N D ?	W E T L A N D ?	V I S I T ?	D E T A I L / A r e a N a m e	V E G C O N	F i e l d d a t e 200_	O B S F r o m	Y N O T A S S	D E T A I L V I S I T R E Q D	C O M M E N T S	V E G S T R U C T U R E / D E N S I T Y	F C T	D O M I N A N T S		
																			1	2	3
44	Y	-	-	P	4	Y	Y	-	-	Dubia report Gwineliny 11th veg survey	9/6	Nov 04	report		N	plots + spp list	SC	-	Kungla	Astscoparia	Pult pin
																	HS	-	Astscop	Jumpal	
																	S	-	Jumpal		
																	W	-	Eucmar	Boratt	Kungla
45	Y	-	-	Fw	2	Y	-			"	9/8	Nov 04	report		N	plots + spp list	W	-	Eucmar	Boratt	Kungla
																	W	-	Eucmar	Xanpre	
46	Y	-	-	Fw	1	Y	-			"	9/8	Nov 04	report		N	plots + spp list	W	-	Eucmar	Boratt	Kungla
47	Y	-	-	P	1	-	Y										W		Mel		

Summary/General Comments