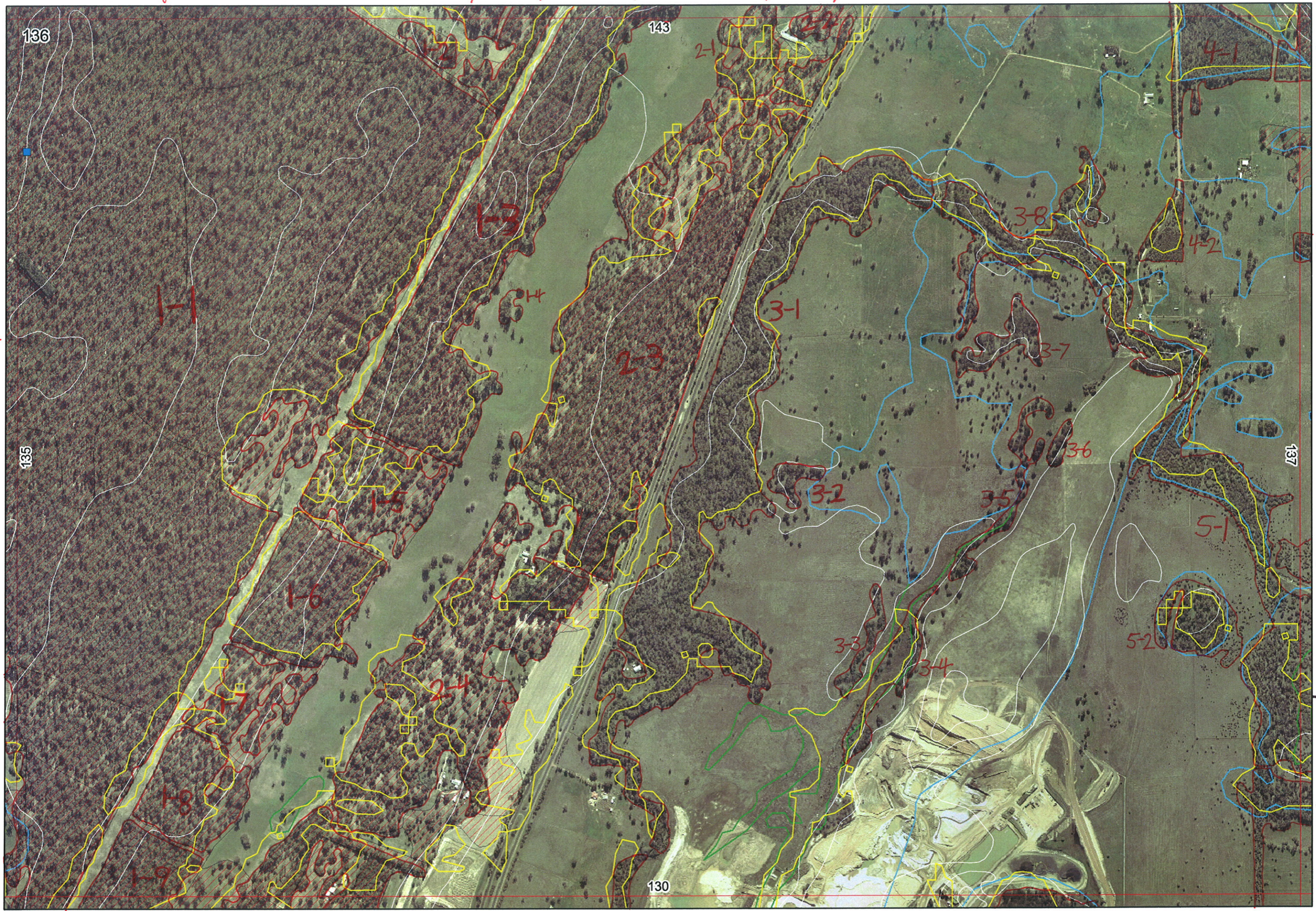


Ag



↑

↑ 143/3-9

↑ 143/3-10

↑

↑

↑

↑

136

143

→ 144/2-2

→ 137/2-2

H

1-3

3-8

4-2

135

3-1

3-7

137

2-3

3-4

3-6

1-6

3-2

3-5

5-1

→ 137/4-1

1-8

3-3

3-4

5-2

→ 137/5-1

1-9

130

→ 137/4-5

↓

↓

130/1-4

↓

↓

130/2-2

↓

130/3-1

↓

137/4-5



136

135

143

137

130

↑
143/3-9

↑
143/3-10

→
144/2-2

→
137/2-2

→
137/4-1

→
137/4-5

←

↑

↑

↑

↑

↑

↓

↓
130/1-4

↓
130/2-2

↓
130/3-1

Ag Dept 12/8/06

↓
137/4-5

1

Swan Bioplan Vegetation Mapping Data

Map Sheet Number 136 Pre Field Recorder(s) AW Field Recorder(s) _____

R E M	RE M2	XM AP	LIN TYPE	L I N E A R	M L U	U N I T S	U P L A N D ?	W E T L A N D ?	V I S I T ?	DETAIL/ Area Name	VEG CON	Field date 200_	OBS From	YNOTASS	D E T Y I S R E Q D	COMMENTS	VEG STRU C I D E N S	FCI	DOMINANTS		
																			1	2	3
✓11	Y	-	-	S	2	Y	-	N		G/CA	-	aerial		N		F	25	Eucyem	Agolle		
																F	25	Banatt	Eucyem	Agolle	
✓12	-	-	-	S	1	Y	-	N		D/CO		aerial		N		F	-	Eucyem	Agolle		
✓13	Y	-	-	S	1	Y	-			G		aerial		N		F	25	Eucyem	Agolle	Banatt	
✓14	-	-	-	S	1	Y	-			CO/D		aerial		N		F	-	Eucyem			
✓15	-	-	-	S	1	Y	-			O/CO		"		N		F	25	"	"	Banatt	
✓16	-	-	-	S	1	Y	-			G		"		N		F	-	"	"		
✓17	-	-	-	S	1	Y	-			D/CO		"		N		F	25	"	"	Banatt	
✓18	-	-	-	S	1	Y	-			G		"		N		F	25	"	"	"	
✓19	Y	-	-	S	1	Y	-			G/G		"		N		F	25	Eucyem	Agolle		
✓21	Y	-	-	S	1	Y	-			B/CO		"		N		F	25	"	"		
✓22	Y	-	-	S	1	Y	-			D/CO		"		N		F	25	Eucyem	Banatt	Agolle	
✓23	-	-	-	S	1	Y	-			G/UG		"		N		F	25	Eucyem	Agolle		
✓24	-	-	-	S	1	Y	-			O/CO		"		N		F	25	Eucyem	Agolle		
✓31	-	channel			Y	P	1	-	Y	G/D		"		N		F	-	Eucal			
✓32	-	-	-	P	1	Y	-			O/CO		"		N		F	-	Eucal			
✓33	-	-	-	P	1	Y	-			D/CO		"		N		W	-	Malpe	Everad		
✓34	-	-	-	P	2	-	Y			D/CO		"		N		S	-	Juncus sp			

Summary/General Comments

2

Map Sheet Number 36

Pre Field Recorder(s) AW

Field Recorder(s)

Swan Bioplan Vegetation Mapping Data

R E M	R E M 2	X M A P	L I N E T Y P E	L I N E A R	M L U	U N I T S	U P L A N D ?	W E T L A N D ?	V I S I T ?	D E T A I L / A r e a N a m e	V E G C O N	F i e l d d a t e 2 0 0	O B S F r o m	Y N O T A S S	D E T Y I S R E Q D	C O M M E N T S	V E G S T R U C T U R E / D E N S I T Y	F C I	D O M I N A N T S		
																			1	2	3
																	F	-	Eucal		
																	F	-	Eucrad		
35	-	-	-		P	2	Y	Y									F	-	Eucal		
36	-	-	-		P	1	Y	-			4/00		airial				F	-	Eucal		
37	-	-	-		P	1	Y	-			8/00		airial				F	-	Eucal		
38	-		channel		Y	P	2	Y	Y		9/00		airial				W	-	Eucrad	Melba	
																	F		Eucal		
41	Y	-	-		P	2	Y	Y									W		Melvim		
																	F		Eucal		
42	-	-	-		P	2	Y	Y									W		Melvim		
																	W		Eucal		
51	Y		channel		Y	8/P	2	Y	Y								W				
																	W				
52	-	-	-		8/P	1	-	Y													

Summary/General Comments