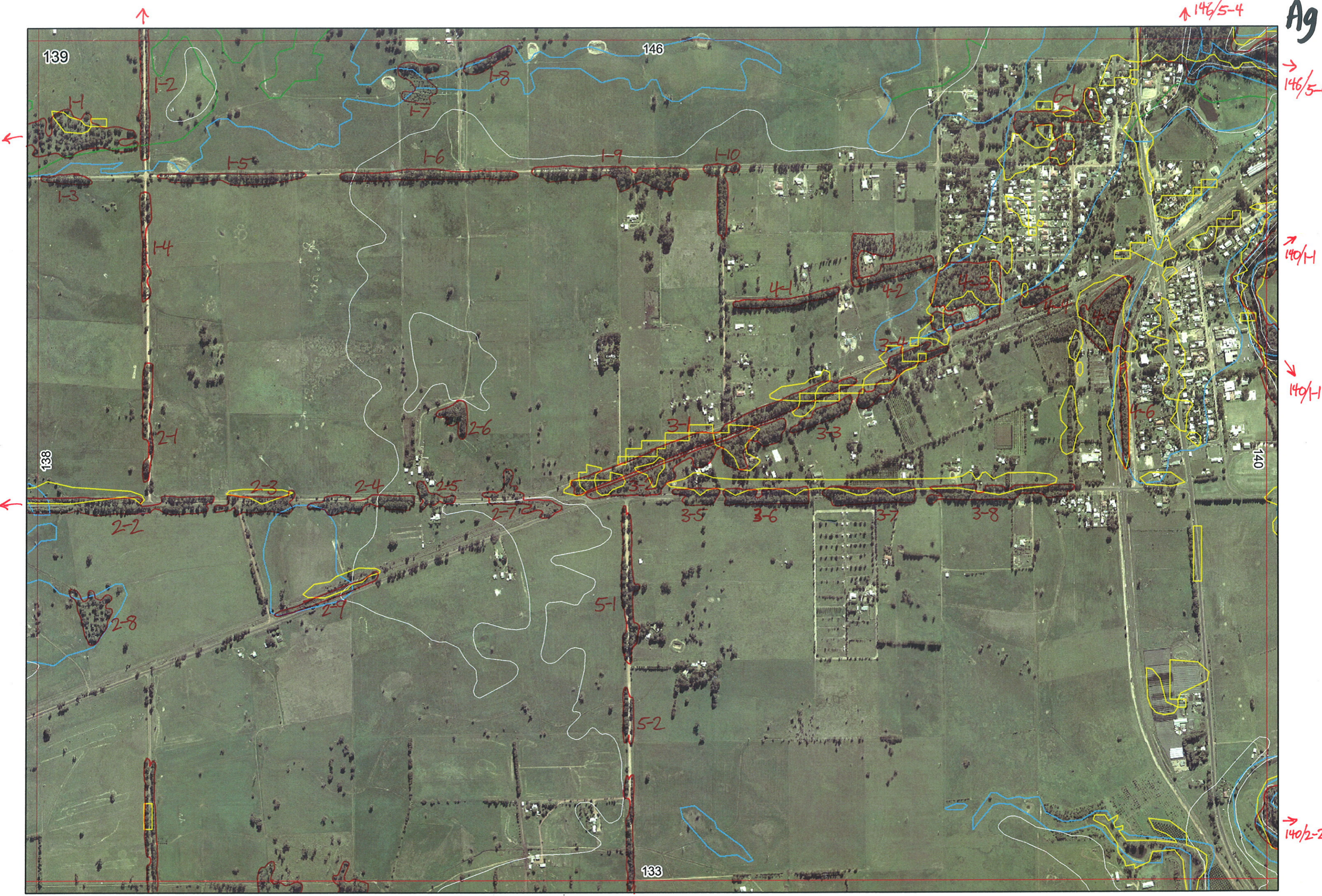


Ag



133/1-1

133/1-3

133/1-4

133/1-6

146/5-4

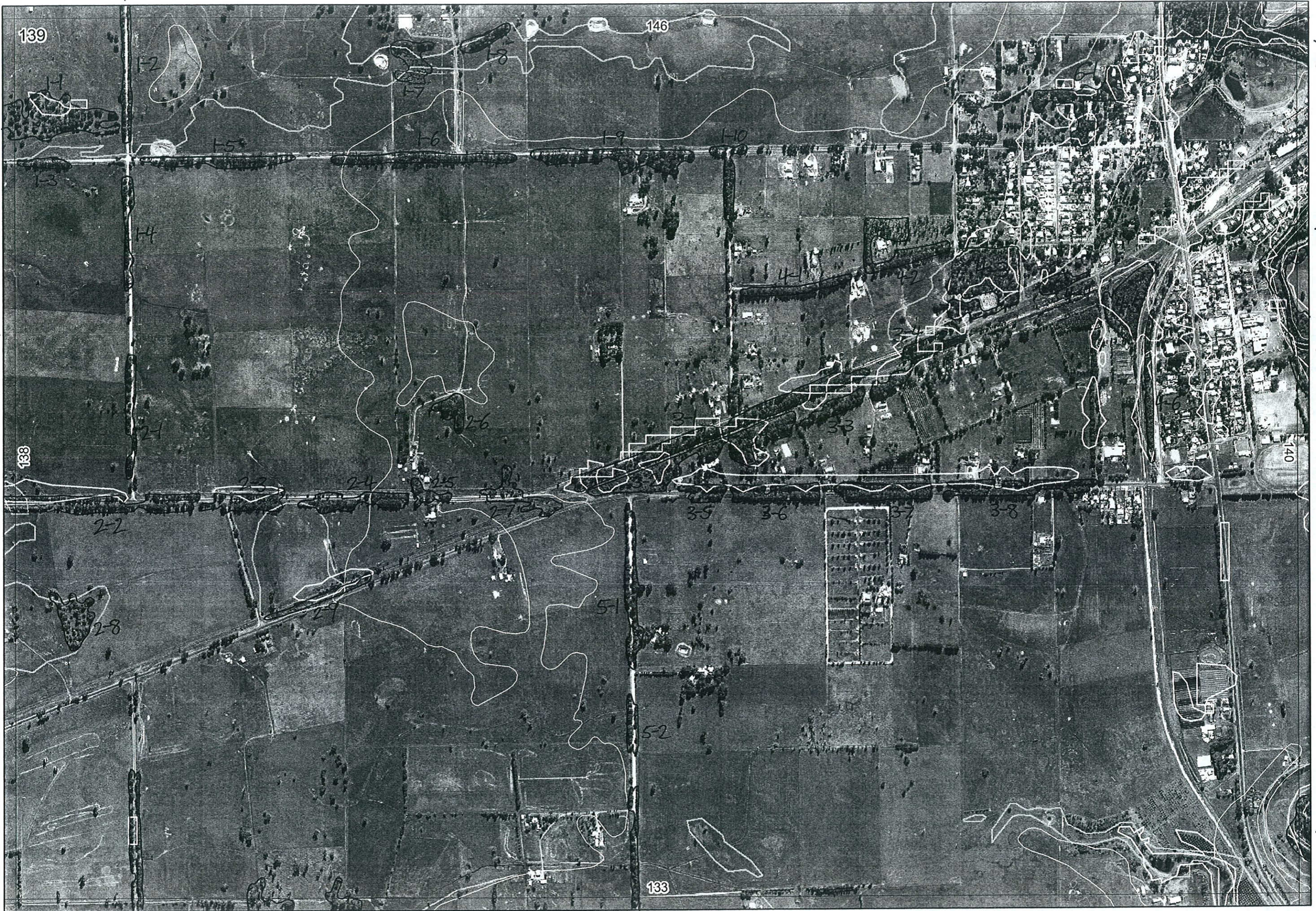
146/5-4

140/1-1

140/1-1

140/2-2

↑ 146/5-4



→ 146/5-4

→ 140/1-1

→ 140/1-1

→ 140/2-2

←

←

↓ 133/1-1

↓ 133/1-3

↓ 133/1-4

↓ 133/1-6

Agdcpt 12/9/06

1

Swan Bioplan Vegetation Mapping Data

Map Sheet Number 139

Pre Field Recorder(s) AW

Field Recorder(s)

R E M	RE M2	XM AP	LIN TYPE	L I N E A R	M L U	U N I T S	U P L A N D ?	W E T L A N D ?	V I S I T ?	DETAIL/ Area Name	VEG CON	Field date 200_	OBS From	YNOTASS	D E T V I S R E Q D	COMMENTS	VEG STRU CI DENS	FCT	DOMINANTS		
																			1	2	3
																	W		Agoffe		
	11	Y	-	-	B	1	Y	-									W		Agoffe		
	12	Y	road	Y	B	1	Y	-									W	-	Euccal		
-	13	-	road	Y	B	1	Y	-			D/CO		aerial		N		W	-	Euccal		
-	14	-	road	Y	B	1	Y	-			D/CO		aerial		N		F	-	Euccal		
-	15	-	road	Y	B	1	Y	-			D/CO		aerial		W		F	-	Euccal		
-	16	-	road	Y	P	1	Y	-			D/CO		aerial		N		F	-	Euccal		
	17	-	-	-	P	2	Y	Y									W				
	18	-	-	-	P	1											F	-	Euccal		
-	19	-	road	Y	P	1	Y	-			D/CO		aerial		N		F	-	Euccal		
-	110	-	road	Y	P	1	Y	-			D/CO		aerial		N		F	-	Euccal		
-	21	-	road	Y	P	1	Y	-			D/CO		aerial		N		F	-	Euccal		
	22	Y	road	Y	P	2	Y	-									F	-	Agoffe		
																	F	-	Euccal		
-	23	-	road	Y	P	1	Y	-			D/CO		aerial		N		W	-	Euccal		
-	24	-	road	Y	P	1	Y	-			D/CO		aerial		N		W	-	Euccal		
-	25	-	road	Y	P	1	Y	-			D/CO		aerial		N		F	-	Euccal		
-	26	-	-	-	P	1	Y	-			D/CO		aerial		N						
	27	-	-	-	P	2	Y	Y													

Approved mapset

Summary/General Comments

2

Swan Bioplan Vegetation Mapping Data

Map Sheet Number 139

Pre Field Recorder(s) AW

Field Recorder(s)

R E M	RE M2	XM AP	LIN TYPE	L I N E A R	M L U	U N I T S	U P L A N D ?	W E T L A N D ?	V I S I T ?	DETAIL/ Area Name	VEG CON	Field date 200_	OBS From	YNOTASS	D E T V I S R E Q D	COMMENTS	VEG STRU CI DENS	FCT	DOMINANTS		
																			1	2	3
28	-	-	-	-	P	1	Y	-									W	-	Eucal		
29	-	road	Y	P	1	-	Y										W		Eucal	Eucal	
31	-	rail	Y	P	1	Y	-										F		Eucal		
32	-	rail	Y	P	2	Y	Y										HS				
33	-	rail	Y	P	1	Y	-				%CO		airial		N		F	-	Eucal		
34	-	rail	Y	P	1	Y	-				%CO		airial		N		F	-	Eucal		
35	-	road	Y	P	1	Y	-				%CO		airial		N		F	-	"		
36	-	road	Y	P	1	Y	-				%CO		"		N		F	-	"		
37	-	"	Y	P	1	Y	-				%CO		"		N		F	-	"		
38	-	"	Y	P	1	Y	-				%CO		"		N		F	-	"		
41	-	road	Y	P	1	Y	-				%CO		"		N		F	-	"		
42	-	road	B	P	1	Y	-				%CO		"		N		F	-			
43	-	-	-	P	1	Y	-										F		Eucal		
44	-	rail	Y	P	1	Y	-				%CO		airial		N		F				
45	-	-	-	P	1	Y	-										F	-	Eucal		
46	-	road	Y	P	1	Y	-				%CO		airial		N						

Summary/General Comments

3

Map Sheet Number 139 Pre Field Recorder(s) AW Field Recorder(s) _____ Swan Bioplan Vegetation Mapping Data

R E M	RE M2	XM AP	LIN TYPE	L I N E A R	M L U	U N I T S	U P L A N D ?	W E T L A N D ?	V I S I T ?	DETAIL/ Area Name	VEG CON	Field date 200_	OBS From	YNOTASS	D E T V I S R E Q D	COMMENTS	VEG STRU CTUR E DENS	FCT	DOMINANTS		
																			1	2	3
51	-		road	Y	P	Y	-				D		airial			F	-	Eucal			
52	-		"	Y	P	Y	-				% CO		"			F	-	Eucal			
61	-		-	-	P	Y	-				% CO		"			F	-	Eucal			

Summary/General Comments