

181

188

182

175

✓ ↑ 181-2-1 → 188/3-1

→ 181-8-1
→ 181-8-2

→ 6-2
✗

→ 9-2

WAVES

↓ 175/181-8-1

↓ 181/181-9-1

↓ 9-2



✓

✓

← 1-1

181

181-2-1
188/3-1

188

2-4

3-1

3-2

3-3

5-1

5-2

5-3

5-4

5-5

180

182

181-8-1

181-8-2

6-2

9-2

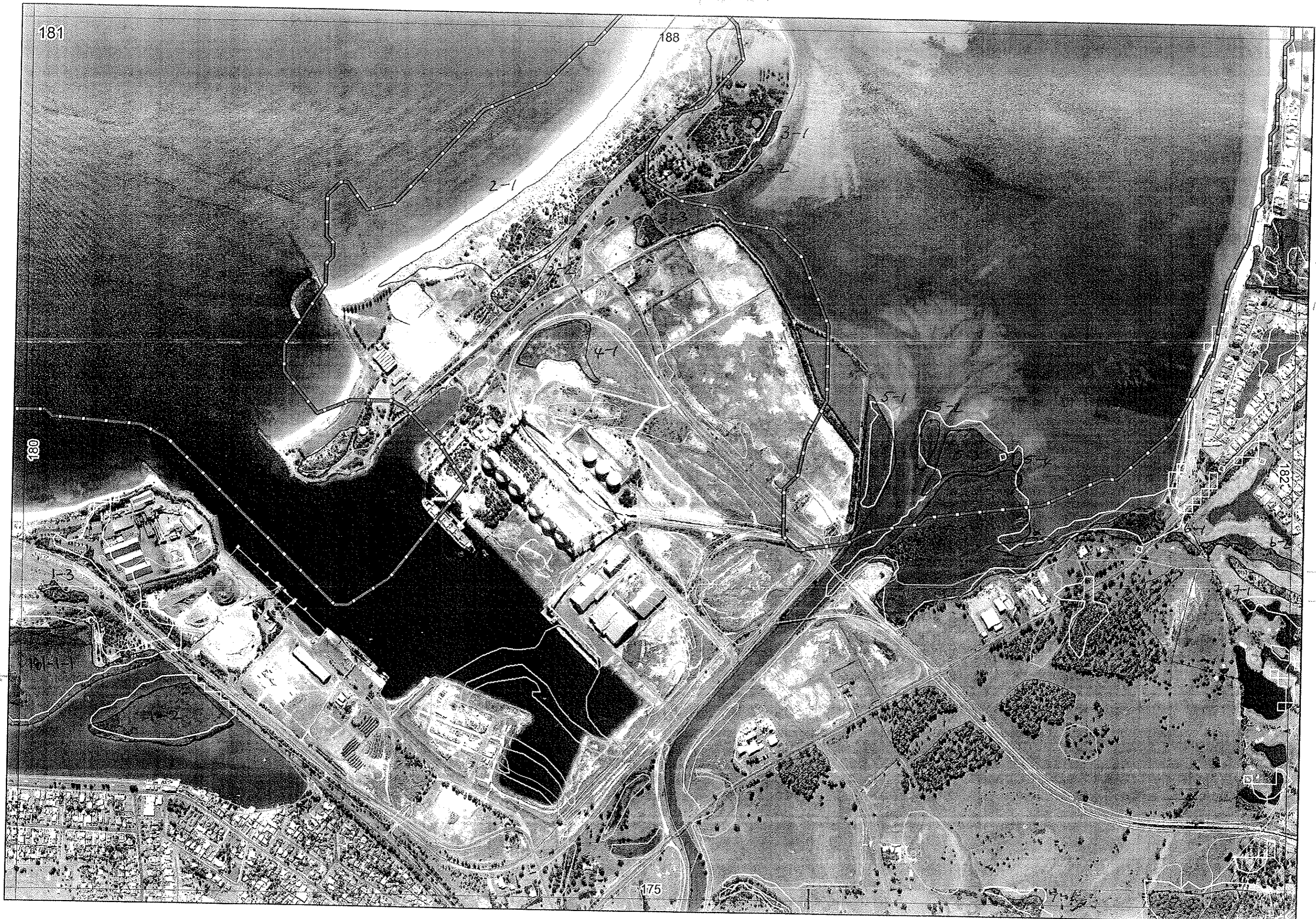
175

175/8-1

181/9-1

9-2 To A9
28/9/06





181

188

180

182

175

2-1

4-1

5-1

5-2

1-3

181-8-1
181-8-2

181/9-1

9-2

181

180

175

182

181-2-1
2-1

188

2-4

3-1

3-2

3-3

4-1
Fill

Fill

Fill

Fill

5-1

5-2

5-3

5-4

5-5

5-6

181-8-1

181-8-2

→

→

cas? ob
plant

Thin strip
occ here

Thin strip
occ here

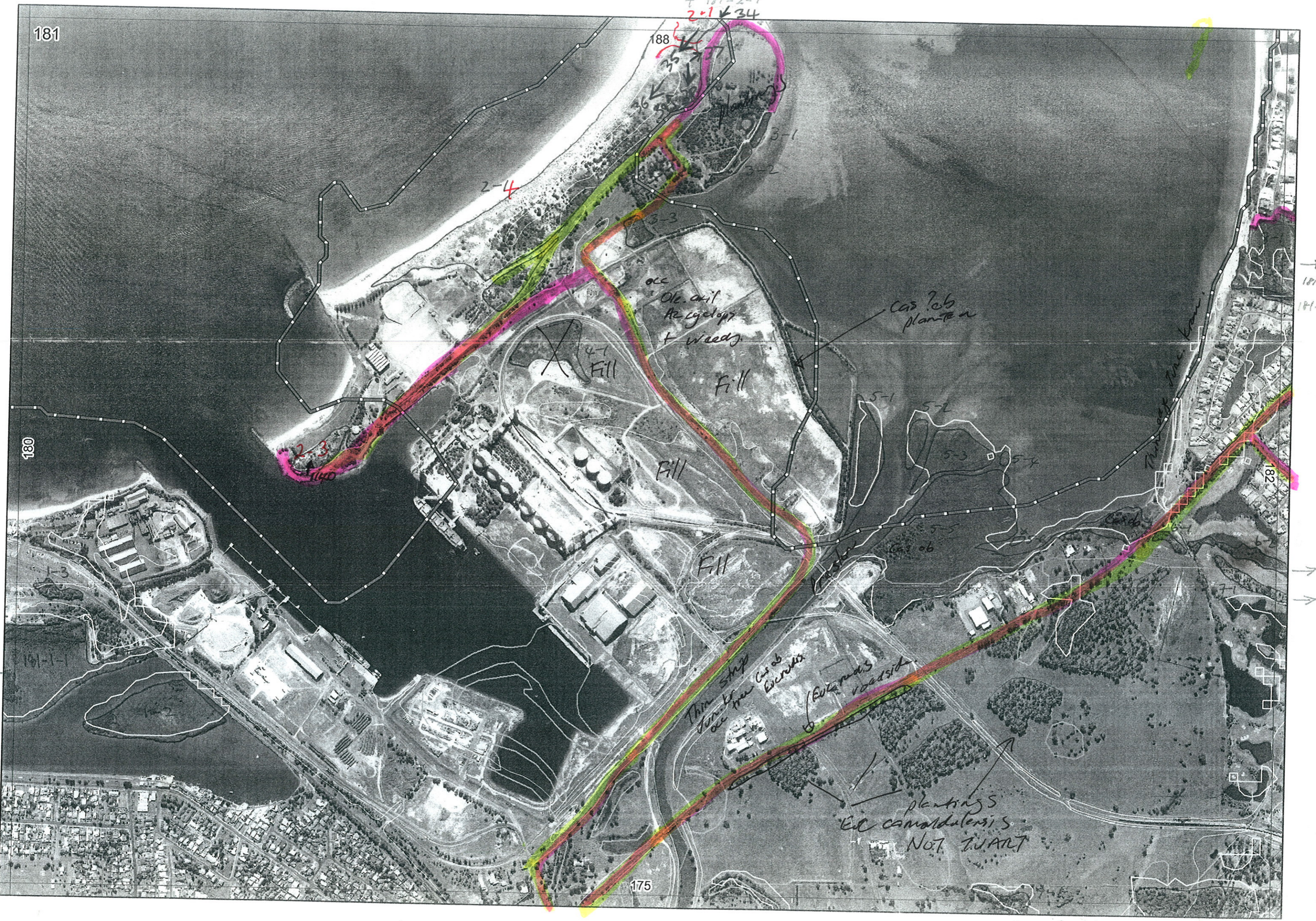
cas ob
excavated

Excavated
roadside

plantings
Ed canadensis
NOT IN ART

181/9-1

9-2



Map Sheet Number 1901a

Pre Field Recorder(s) REC 1/5/06

Field Recorder(s) BJR 23/06/06

Erin Harris } 27/06/06
Barry Dealey }
B. Keighley }

Swan Bioplan Vegetation Mapping Data

R E M	R E M 2	X M A P	L I N T Y P E	L I N E A R	M L U	U N I T S	U P L A N D ?	W E T L A N D ?	V I S I T ?	D E T A I L / A r e a N a m e	V E G C O N	F i e l d d a t e	O B S F r o m	Y N O T A S S	D E T V I S R E Q D	C O M M E N T S	V E G S T R U C / D E N S	F C T	D O M I N A N T S		
																			1	2	3
1	1	Y	-	N	M	4	Y	Y	N	Koombana Bay (waterways commission 1983) Tauss (2 E	29/3	edge		Y	No FCT for mangrove unit (see also map tile #180)	MA		Avicennia marina		
																	S		Iso nod	Jun krau	Sen laut
																	H		Sarc quin	Halb ind	Suae aust
																	W		ros ob	Jun krau	Atrip sp.
1	2	N	-	N	M	2	N	Y	N	Anglesea Island (oc above) (Tauss	2 E	29/3	edge		Y	"	MA		Avicennia marina		
																	H		Sarc quin	Halb ind	Suae aust
1	3	N	-	N	G	1	Y	N	N	Koombana Bay "	4 G	29/3	edge		N		F		Ago fle		
1	4	N	-	N	Q	1	Y	N	N	Koombana Bay "	4.3 G-D	29/3	edge		N	dune remnant, pre-tailings (see also map tile #180)	S		Spy glob	Aca-coch	Lept glad
																	W		swale 3 cover Lept. glad		
2	1	Y	coast	Y	Q	3	Y	N	Y		5	27/6	will		N	Foredune 3 see listing see 19 Dunes 5-6 see listing	G		Spin long	Spin. hir	
2	4	N	coast	Y	Q	2	Y	N	Y		4.3	27/6	will		N		SH		Aca. sp.		
2	3	N	-	N	Q	1	Y	N	Y		4	27/6	edge		N	patches lep. load, Scarb plant	SH		Spin. hir	Spin. hir	
2	2	N	coast	Y	Q	1	Y	N	Y		5	27/6	edge		N	duct, Euph. terracina	SH		clear axill	Ac. coch	
																	SH		Aca. coch	Ac. coch	
																	SH		Lephe	Ac. coch	Scarb. coch
3	1	N	Est.	Y	M	2	N	Y	Y		2.7	27/6	trans.		N	planted Casuarina, misc. plants? planted? Gahiri?	SH		Franklinia	Jun krau	
3	2	N	-								2.7	27/6	trans		N	same as 3-1	S		Jun krau		
4	1	N	-	Y	M	1	N	Y	Y	Orbo Lakes der Preston River	4	27/6	dist		N	Palms seeding For palm ? planted Cas? ob.	S		Jun krau		
																	W		Euc. radi's		
																	S		Jun krau	Billb. calca	
5	1	N	Est.	B	M	2	N	Y	Y	Dr. H. Preston River	3	27/6	edge		N	Some Watsonia, good fringing sedges	SH		Samphire (sea)		
																	S		Jun. krau		
																	SH		Red succ	Hal hel	

Summary/General Comments
Remnant 180-1-1 and 1-4 on map tile #181

Scavola = Scavola crossifolia
Red succ = Suae aust.
Hal hel = Sarc quin

REM	RE M2	XM AP	LIN TYPE	LINEAR	MLU	UNITS	UPLAND?	WETLAND?	VISIT?	DETAIL/ Area Name	VEG CON	Field date 200_	OBS From	YNOTASS	DETVIS RECD	COMMENTS	VEG STRUC/DENS	FCT	DOMINANTS		
																			1	2	3
5	2	N		N	M	1	N	Y	N	Preston River Delta	3.7	27/06	dis	No land access	N		S		Junc krau		
5	3	N		N	M	1	N	Y	N	"	3.7	27/06	dis?	"	N		S		Junc krau		
5	4	N		N	M	1	N	Y	N	"	3.7	27/06	dist.	"	N		S		Junc krau		
5	5	N	EST	B	M	3	N	Y	Y	"	3.7	27/06	edge		N		SH S		Hal hol Jun krau		
											2						F		Cas ob		
5	6	N		N	M	1	N	Y	N	"	3.7	27/06	erial				S		Junc krau		
6	1	N	*	Y	M	2	N	Y	Y		4		edge				W S		Euc red Junc krau	Mel rhaps	
6	2	Y	*	Y	M	2	N	Y	N		4.7	27/06	oase				SH S		Mel rhap Junc krau	Typh.	
7	1	Y	Dune	Y	Q	1	Y	N	SH 182									Euc red S			
8	1	N	NA	N	M	3	N	Y	Y	Reserve in Canal development	3.7	27/06	edge				SH		Hal Will	RE	
8	2	-	See Map 182							'Grand canals'		27/06	edge					SH		Mel vim Junc krau	Mel rhaps
																		S		Junc krau	
9	1	Y		N	Q	1	N	Y	185												
9	2	Y		N	Q	2	Y	Y	185												
4	2	N		N	M	1	N	Y	Y		2	27/06	edge					SH		Mel rhaps ? Salge	
4	3	N		N	M	2	N	Y	Y		4.3	27/06	edge		N			S		Typha occ	Bulb. cold
4	4	Y			M	1	N	Y	Y		2	27/06	edge					W		Euc red.	

43

44

Summary/General Comments