



272-4-5 ↑ 272-4-1 ↑ 272-5-3 ↑ 272-5-1 ↑ 8-6 ↑ 8-6 ↑ 272-6-1 ↑ 11-1 ↑ 11-3 ↑ 272-6-10 ↑ 272-9-1 ↑ 272-9-2 ↑

264

272

263

265

256

2-9-30 ↑
3-6 ↑

3-5 ←

→ 13-2

→ 13-1

→ 13-1

3-5 ↓

256 ↓

↓

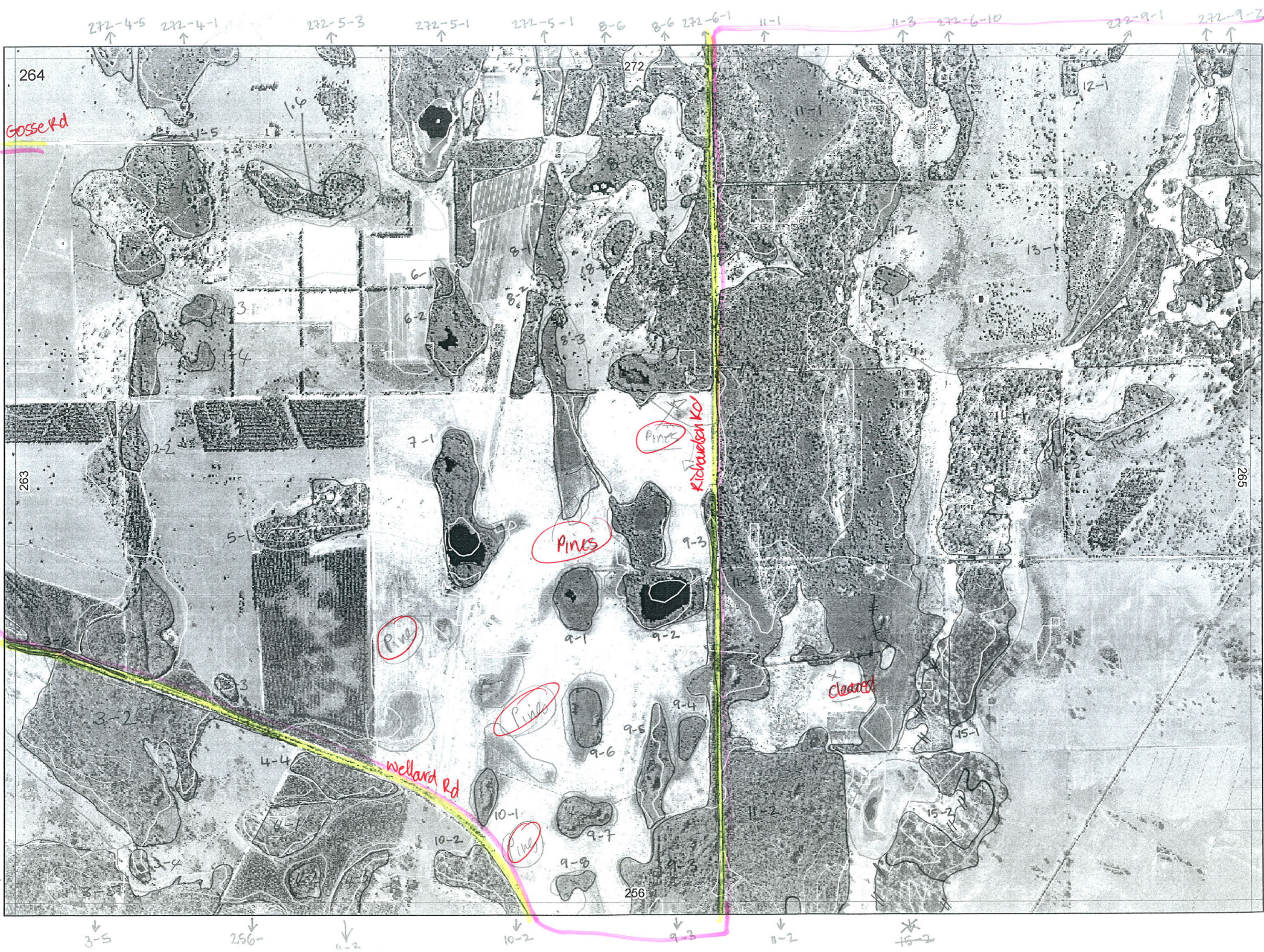
10-2 ↓

9-3 ↓

11-2 ↓

*
11-2 ↓

TO A9 24/8/06



1

Map Sheet Number 264

Pre Field Recorder(s) Bronwen/Bec Field Recorder(s)

Swan Bioplan Vegetation Mapping Data

R E M	RE M2	XM AP	LIN TYPE	L I N E A R	M L U	U N I T S	U P L A N D ?	W E T L A N D ?	V I S I T ?	DETAIL/ Area Name	VEG CON	Field date 200_	OBS From	YNOTASS	D E T V I S R E Q D	COMMENTS	VEG STRU C/ DENS	FCT	DOMINANTS		
																			1	2	3
F1	1	N	-	N	B/P	4	Y	Y			4.3	14/7	dist	-			W		Euc. marg	Xanth. pr	Kunzea
											"	"	"	-			F		Mel. rhap	sedges	
											2.3	"	"	-			W		Mel. preiss	Ast. fascic	
F1	2	N	-	N	B/P	2	N	Y			4.7		aerial	no access			W		Mel. prei	Ast. fascic	
																	W		Mel. rha		
F1	3	N	-	N	B/P	1	N	Y			4.7	14/7	aerial	no access			W		Mel. prei	Ast. fascic	
F1	4	N	-	N	B/P	1	N	Y			4.7	14/7	aerial	no access			W		Mel. prei	Ast. fascic	
F1	5	N	road	Y	B/P	1	N	Y			4.3	14/7	dist	-		remove - not digitized by Ag	HS		Ast. fascic	Juncus pallidus	
F2	1	N	fence	Y	P	1	N	Y			4.3	14/7	aerial	no access			W		Mel. rha		
F2	2	N	-	N	B/P	1	N	Y			4.3	14/7	aerial	no access			W		Mel. rha		
F3	1	N	-	N	B/P	2	N	Y			4.7	14/7	edge	-			W		Euc. marg	Kunzea	Bank. aff
					P						4	14/7	edge	-			W		Mel. preiss	Ast. fascic	
F3	2	N	-	N		2	B/P	Y			3.7	14/7	edge	-			W		Euc. marg	Kunzea	
					P						5	14/7	edge	-		NE/NW corner cleared + semi cleared since photo	W		Mel. preiss	Ast. fascic	
F3	3	N	-	N	P	1	N	Y			5.7	14/7	edge	-		over pasture grasses	F		Mel. preiss		
F3	4	N	-	N	P	1	N	Y			4	14/7	aerial	no access			W		Euc. marg	Kunz glab	
F3	5	Y	-	N	B/P	2	Y	Y			3.7	14/7	aerial	no access			W		Euc. marg	Kunz glab	
																	W		Mel. prei	Ast. fascic	
F3	6				B						5.7	14/7	edge	-			S		Kunzea	Mel. preiss	

Summary/General Comments

R E M	RE M2	XM AP	LIN TYPE	L I N E A R	M L U	U N I T S	U P L A N D ?	W E T L A N D ?	V I S I T ?	DETAIL/ Area Name	VEG CON	Field date 200_	OBS From	YNOTASS	D E T V I S R E O O D	COMMENTS	VEG STRU C/D ENS	FCT	DOMINANTS		
																			1	2	3
4	1	N	-	N	B/P	2	Y	Y			5	14/7	airial				W		Mel. preiss		
											5	14/7	"				W		Euc. marg		
4	2	N	-	N	B/P	1	N	Y			5	14/7	airial				W		Mel. preiss		
4	3	N	-	N	B/P	1	N	Y			5	14/7	distance				W		Mel. preiss		
4	4	N	-	N	B/P	1	Y	N			4	14/7	edge		grazed, burnt		W		Euc. marg.	lots	Kunz. glab
5	1	N	-	N	B	1	Y	N			4.3	14/7	road	no access			W		Euc. marg		Kunz. glab
6	1	N	-	N	B	1	N	Y			4	"	"	"			W		Mel. prei		
6	2	N	-	N	B	2	N	Y			4	"	"	"			W		Mel. prei		
												"	"	"			W		Mel. vha		
7	1	N	-	N	B	2	N	Y			4	"	"	"			W		Mel. prei		
												"	"	"			W		Mel. vha		
8	1	N	-	N	B	?	N	Y			4.3	"	airial	"			W		Mel. preiss		
																	MS		Ast fas		
8	2	N	-	N	B	1	Y	N			4.3	"	"	"			W		Mel. preiss		
8	3	N	-	N	B	2	N	Y			4.3	"	airial	"	Kunzea regrowth on sandy rises		W		Mel. preiss		
																	SC		Kun glab		
8	4	N	-	N	B	1	N	Y			4.3	"	"	"			W		Mel. prei		

Summary/General Comments

R E M	R E M 2	X M A P	L I N E T Y P E	L I N E A R	M L U	U N I T S	U P L A N D ?	W E T L A N D ?	V I S I T ?	D E T A I L A r e a N a m e	V E G C O N	F i e l d d a t e 2 0 0	O B S F r o m	Y N O T A S S	D E T E R M I N E D	C O M M E N T S	V E G S T R U C T U R E D E N S	F C T	D O M I N A N T S		
																			1	2	3
185	N	-	NB3	Y	Y						3.7	14/7	edge			lots Kunzea glab	W		Euc. marg	Banks. aff.	Banks. aff.
											2.3	14/7	"				W		Mel. preiss	Ast. tas	
											2.3	14/7	"				S		sedges		
186	Y	-	NB2	Y	Y						2.3	14/7	edge				W		Mel. preiss		
											2.3	14/7	edge				S		Kunz. glab	Euc. marg	
191	N	-	NB1	N	Y						2.3	14/7	axial				W		Mel. preiss	Mel. raph	
192	N	-	NB2	N	Y						2.3	14/7	"				W		Mel. raph	Banks. aff.	
											2.3	14/7	"			Lots Kunzea glabr	W		Mel. preiss	Kunzea glab	
193	Y	road	YB3	Y	Y					?red lake reserve	2.3	14/7	edge			Lots Kunzea glabr	F		Mel. preiss	Ast. tas	Mel. vinn
											"	"	"				W		Mel. raph	Ast. tas	Banks. aff.
											3.7	"	"			Lots Kunzea glabr.	F W		Euc. caloph	Agonis flex	
																			Euc. marg	Banks. aff	
194	N	-	NB1	N	Y						3.7	"	edge			cleared in past	W		?Mel. preiss	Ast. tas	
195	N	-	NB2	N	Y						2.3	14/7	axial				W		Mel. raph		
											2.3	14/7	axial				W		Mel. preiss		
196	N	-	NB1	N	Y						2.3	14/7	axial				W		Mel. raph		
197	N	-	NB1	N	Y						2.3	14/7	axial				W		Mel. preiss		
198	N	-	NE1	N	Y						5	14/7	axial/edge				W		Mel. preiss	Kunz. glab	
101	N	-	NB1	N	Y						4.7	14/7	axial	no access			W		Mel. prei	Kun glab	

Photo 35
data E

Summary/General Comments

4

Map Sheet Number 2604

Pre Field Recorder(s) Bronwen/Bec

Field Recorder(s) Bec + Greg

Swan Bioplan Vegetation Mapping Data

R E M	R E M2	X M A P	L I N T Y P E	L I N E A R	M L U	U N I T S	U P L A N D ?	W E T L A N D ?	V I S I T ?	D E T A I L / A r e a N a m e	V E G C O N	F i e l d d a t e	O B S F r o m	Y N O T A S S	D E T V I S I O N R E C O R D	C O M M E N T S	V E G S T R U C T U R E / D E N S I T Y	F C T	D O M I N A N T S		
																			1	2	3
10	2	Y	-	N	B	1	Y	N			5	14/7	edge			Saw good dieback (upland) grazing, fire	W F SC		Euc. marg Mel. preiss Kunz. glab	Kunzea gl Kun	
11	1	Y	-	N	B	2	Y	Y			2.3	14/7	Edge				W		Euc. marg Mel. preiss Kunz. glab	Bank. aff Ast. fascic	Kunz. glab
											~1.2	"				pts	W		Mel. preiss	Ast. fascic	
11	2	Y	-	N	B	4	Y	Y			3.7	4/7	edge			(lots Kunzea glab (scrub rotted in part))	W		Euc. marg Mel. preiss	Bank. aff Asterata	B. illic
											2.3	"	"				W		Mel. preiss	Asterata	
											3.7	"	"				S		Kunzea glab		
											3.7	"	"				W		Mel. raphiophylla		
11	3	Y	-	N	B	1	Y	N			4	"	road	no access			W		Euc. marg	Kunz. glab	
11	4	N	-	N	P	1	N	Y			4	"	"	"			W		Mel. prei	Ast. fascic	
12	1	N	-	N	P	1	Y	N			4.7	"	"	"			W		Mel. prei		
13	1	Y	-	N	B/P	3	Y	Y			4.3	"	"	"							
13	2	Y	-	N	B/P	2	Y	Y			4	"	"	"							
13	3	Y	-	N	B/P	2	Y	Y			4.3	"	"	"							
14	1	N	-	N	B	1	Y	N			4.7	"	"	"							

TAPE

(note upland rotted now regen cleared area on way)

Photo 39344
dwn

Summary/General Comments

5

Map Sheet Number 264

Pre Field Recorder(s) Brown/Bec Field Recorder(s) _____

Swan Bioplan Vegetation Mapping Data

R E M	R E M 2	X M A P	L I N T Y P E	L I N E A R	M L U	U N I T S	U P L A N D ?	W E T L A N D ?	V I S I T ?	D E T A I L A r e a N a m e	V E G C O N	F i e l d d a t e 2 0 0	O B S F r o m	Y N O T A S S	D E T V I S R E Q D	C O M M E N T S	V E G S T R U C / D E N S	F C T	D O M I N A N T S			
																			1	2	3	
14	2	N	-	N	B/P	2	N	Y			4.3	14/3	00/00	no access								
14	3	N	-	N	B/P	1	N	Y			5	"	"	"								
15	1	N	-	N	B	2	Y	N			4.7	"	"	"								
15	2	N	-	N	B	1	Y	N			4.2	"	"	"								
16	2	N	-	N	B/P	1	Y	N			5.7	14/7	dist/serial			Trees over pasture.	W		Euc. marg			

Summary/General Comments