



 = not native remnant (planted)

279-4-3

279/4-2

279/1-8

279/3-2

288-7-2
288/7-1

281-2-1

281-3-1

22-1-1

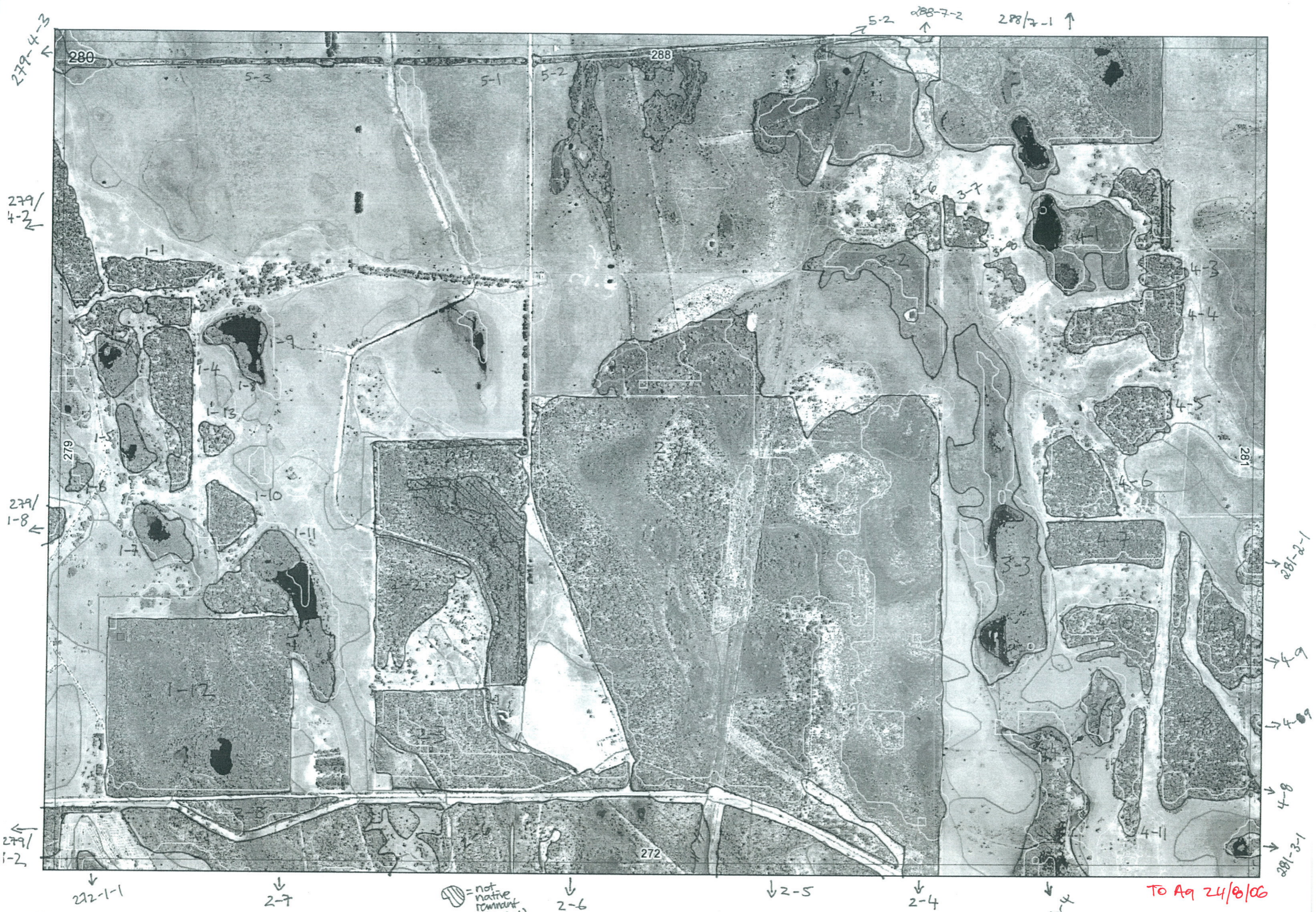
2-7

2-6

2-5

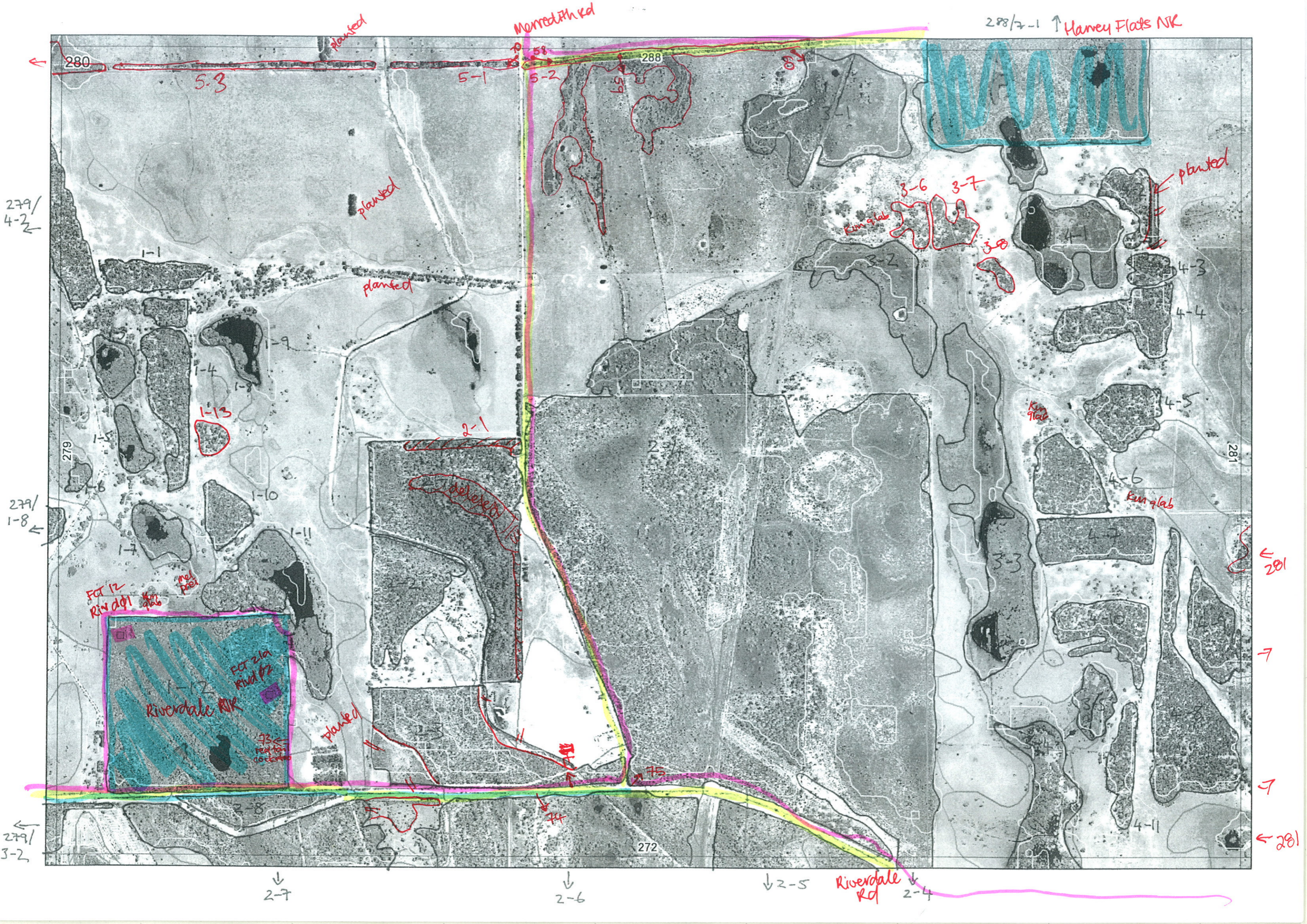
2-4

3-4



hatched box = not native dominant

To A9 24/8/06



1

Entered Dec 16/5/06

Map Sheet Number 200

Pre Field Recorder(s) Bec 15/5/06 Field Recorder(s) Bec, Jodie 16/5

Swan Bioplan Vegetation Mapping Data

RE M	RE M2	XM AP	LIN TYPE	L I N E A R	M L U	U N I T S	U P L A N D ?	W E T L A N D ?	V I S I T ?	DETAIL/ Area Name	VEG CON	Field date 200_	OBS From	YNOTASS	D E T V I S I O N R E Q D	COMMENTS	VEG STRU C/DENS	FCT	DOMINANTS		
																			1	2	3
1	1	N	-	N	B	1	Y	N	Y		4.3	16/5	aerial	no access	N		F	-	Euc marg		
1	2	N	-	N	B	1	Y	N	Y		4.3	16/5	aerial	no access	N		F	-	Euc marg		
1	3	N	-	N	B/P	3	Y	Y	Y		4	16/5	aerial	no access	N		F	-	Euc marg	Kunz glab	
																	F	-	Mel rhaph		
																	F	-	Mel rhaph	mel press	
1	4	N	-	N	B	1	Y	N	Y		4	16/5	aerial	no access	N		F	-	Euc marg	Kunz glab	
1	5	N	-	N	P	2	N	Y	Y		4	16/5	aerial	no access	N		F	-	Mel rhaph	mel press	
1	6	N	-	N	P	1	N	Y	Y		4.7	16/5	aerial	no access	N		F	-	Mel rhaph		
1	7	N	-	N	P	1	N	Y	Y		4	16/5	edge	-	N		F	-	Mel rhaph	Astart fasc.	
1	8	N	fringe	Y	P	1	N	Y	Y		4.3	16/5	aerial	-	N		F	-	Mel rhaph		
1	9	N	fringe	Y	P	1	N	Y	Y		4.3	16/5	aerial	-	N		F	-	Mel rhaph		
1	10	N	-	N	B/S	1	Y	N	Y		4	16/5	aerial	no access	N		F	-	Euc marg	Kunz glab	Agon flex
1	11	N	-	N	B/P	2	Y	Y	Y		3.7	16/5	edge	-	N		F	-	Euc marg	Bank stici	Bank atten
												16/5	edge	-	N		F	-	Mel rhaph		
1	12	N	-	N	B/P	4	Y	Y	N	Riverdale NR	2	16/5	edge	-	N	2 Plots: FCT 12 + 21a	W	-	mel press		
																	F	-	Euc marg	Bank atten	

Summary/General Comments Entered Dec 16/5/06

Map Sheet Number 280

Pre Field Recorder(s) Bec 15/5/06 Field Recorder(s) Bec / Jodie 16/5 Swan Bioplan Vegetation Mapping Data

R E M	RE M2	XM AP	LIN TYPE	L I N E A R	M L U	U N I T S	U P L A N D ?	W E T L A N D ?	V I S I T ?	DETAIL/ Area Name	VEG CON	Field date 200_	OBS From	YNOTASS	D E T V I S I O R E Q D	COMMENTS	VEG STRU C/ DENS	FCT	DOMINANTS			
																			1	2	3	
1	12									Riverdale	2	16/5	edge	-	N	3 redtail cockatoos	Sc	-	Astart fusc	Lepido long	Peri ellip	photo 72
1	13	N	-	N	1	Y	N	Y			5	16/5	aerial	no access	N		F		Kunz glab			
2	1	N	-	N	B/p	3	Y	Y	Y		4	16/5	edge	-	N	Bank atten	F		Euc marg	Bank ilici	Kunz glab	
																	F		Mel priess			
																	Sc		Kunz glab			
2	2	N	-	N	B	2	Y	N	Y		4.3	16/5	aerial	no access	N		F		Euc marg	Bank ilici	Kunz glab	
2	3	N	-	N	B/p	3	Y	Y	Y		4.7	16/5	edge	-	N		F		Euc marg	Kunz glab		photo 71
																	Sc		Kunz glab			
																	F		Kunz glab	Mel pries		
2	4	Y	-	N	B/p	4	Y	Y	Y		3.7	16/5	edge	-	Y		Sc		Kunz glab	Xant pries		photo .75
																Kunz glab	F	21b	Euc marg	Bank ilici	Bank atten	
																	F		Bank attic	mel rhaph		
2	5	Y	-	N	B/p	3	Y	Y	Y		3	16/5	edge	-	N		Sc		mel pries	Astart fusc		
																	W	21b	Euc marg	Bank ilici	Bank atten	

Summary/General Comments
Entered Bec 16/5/06

Map Sheet Number 280

Pre Field Recorder(s) BCC 15/5/06

Field Recorder(s) Bec / Jodie 16/5

Swan Bioplan Vegetation Mapping Data

REM	RE M2	XM AP	LIN TYPE	LINEAR	MLU	UNITS	UPLAND?	WETLAND?	VISIT?	DETAIL/ Area Name	VEG CON	Field date 200_	OBS From	YNOTASS	DET VIS REQD	COMMENTS	VEG STRUC/ DENS	FCT	DOMINANTS		
																			1	2	3
26	Y	-	N B/P	4	Y	Y	Y	Y			3	16/5	edge	-	N		F	-	Euc marg	Bank atten	Kunz glab
																	Sc		Astart fasc	mel priess	
																	Sc		Kunz glab		
																	F		Bau artic	mel v haph	
27	Y	-	N B/P	3	Y	Y	Y	Y			3	16/5	distance	-	N	Bank ilici, Bank atten	F	-	Kunzea glab	Euc marg	Xan priess
																	Sc		mel priess	Astart fasc	
28	N	-	N B/P	2	Y	Y	Y	-			3.7	16/5	edge	-	N		F	-	Bank atten	Bank ilici	Kunz glab
																	Sc		Astart fasc	Calothamnus longistylis?	
																	F	-	mel priess	Astart fasc	
31	N	-	N B/P	3	Y	Y	Y				4	16/5	edge	-	N		Sc	-	mel priess	Astart fasc	
																	F	-	Euc marg	Kunz glab	
																	W	-	Euc marg	Xanth priess	
32	N	-	N P	2	N	Y	Y				4	16/5	aerial	no access	N		Sc	-	mel priess	Astart fasc	
																	F	-	mel v haph		
33	N	-	N P	2	N	Y	Y				5.3	16/5	aerial	no access	N		F	-	mel v haph		
																	Sc	-	Astart fasc		
34	Y	-	N P	2	N	Y	Y				5	16/5	distance	no access	N		F	-	mel v haph	mel priess	
																	Sc	-	mel later		

photo 74

photo 60

Summary/General Comments
Entered Bec 16/5/06

Map Sheet Number 280

Pre Field Recorder(s) Bec 16/5/06

Field Recorder(s) Bec/Jodie 16/5

Swan Bioplan Vegetation Mapping Data

R E M	RE M2	XM AP	LIN TYPE	L I N E A R	M L U	U N I T S	U P L A N D ?	W E T L A N D ?	V I S I T ?	DETAIL/ Area Name	VEG CON	Field date 200_	OBS From	YNOTASS	D E T V I S I O N R E Q D	COMMENTS	VEG STRUC/ DENS	FCT	DOMINANTS		
																			1	2	3
3	5	N	-	N	P	2	N	Y	Y		5	16/5	aerial	no access	N		F		mel rhaps		
3	6	N	-	N	B	1	Y	N	Y		5	16/5	aerial	no access	N		F		kunz glab	Euc marg	
3	7	N	-	N	B	1	Y	N	Y		4	16/5	aerial	"	N		F		kunz glab	Euc marg	
3	8	N	-	N	B	1	Y	N	Y		4-7	16/5	"	"	N		F		kunz glab	Euc marg	
4	1	N	-	N	P	3	N	Y	Y		5	16/5	aerial	no access	N		F		mel rhaps		
																	Sc		Astart fusc		
																	Sc		kunz glab		
4	2	N	-	N	B	1	Y	N	Y		5	16/5	aerial	no access			F		Euc marg	kunz glab	
4	3	N	-	N	B	1	Y	N	Y		4-7	"	"	"			F		Euc marg	kunz glab	
4	4	N	-	N	B	1	Y	N	Y		4	"	"	"			F		Euc marg	kunz glab	Bank atten
4	5	N	-	N	B	1	Y	N	Y		4-6	"	"	"			F		Euc marg	kunz glab	Bank atten
4	6	N	-	N	B	1	Y	N	Y		4	"	"	"			F		Euc marg	Bank atten	kunz glab
4	7	N	-	N	B	1	Y	N	Y		4	"	"	"			F		Euc marg	Bank atten	kunz glab
4	8	N	-	N	B/P	2	Y	Y	Y		4	16/5	distance	no access	N		F		mel rhaps		
																	F		Euc marg	Bank atten	kunz glab
4	9	Y	-	N	B	1	Y	N	Y		4-3	16/5	aerial	no access	N		F		Euc marg	Bank atten	kunz glab
4	10	Y	-	N	B	1	Y	N	Y		4-7	16/5	aerial	no access	N		F		Euc marg	Bank atten	kunz glab

Summary/General Comments

Map Sheet Number 2900 Pre Field Recorder(s) BEC Field Recorder(s) Bec/Sadie 16/5 Swan Bioplan Vegetation Mapping Data

R E M	RE M2	XM AP	LIN TYPE	L I N E A R	M L U	U N I T S	U P L A N D ?	W E T L A N D ?	V I S I T ?	DETAIL/ Area Name	VEG CON	Field date 200_	OBS From	YNOTASS	D E T V I S R E Q D	COMMENTS	VEG STRUC/ DENS	FCT	DOMINANTS		
																			1	2	3
4	11	N	-	N	B	1	Y	N	Y		5	16/5	distance	no access	N		F		Euc marg	Bank atten	
5	1	N	road	Y	B	1	Y	N	Y		3	16/5	edge	-	N		W	N/A	Euc marg		Xan pries
5	2	Y	road	Y	B	4	Y	Y	Y		3.7	16/5	edge	-	N		W	21a	Euc marg	Bank atten	Xan pries
																Bank litto lepido long		12	mel lat	mel vim	Peri ellip
																Baum artic		-	mel rhaph	mel pries	Bau junc
																		-	Astart fasc	Calothamnus longireticulata	Peri ellip
5	3	N	road	Y	B/P	2	Y	Y	Y		4	16/5	avenal	no access	N		W	-	Euc marg		
													"	"	N			-	mel teret	mel rhaph	

photo 70

photo 58/59

Summary/General Comments