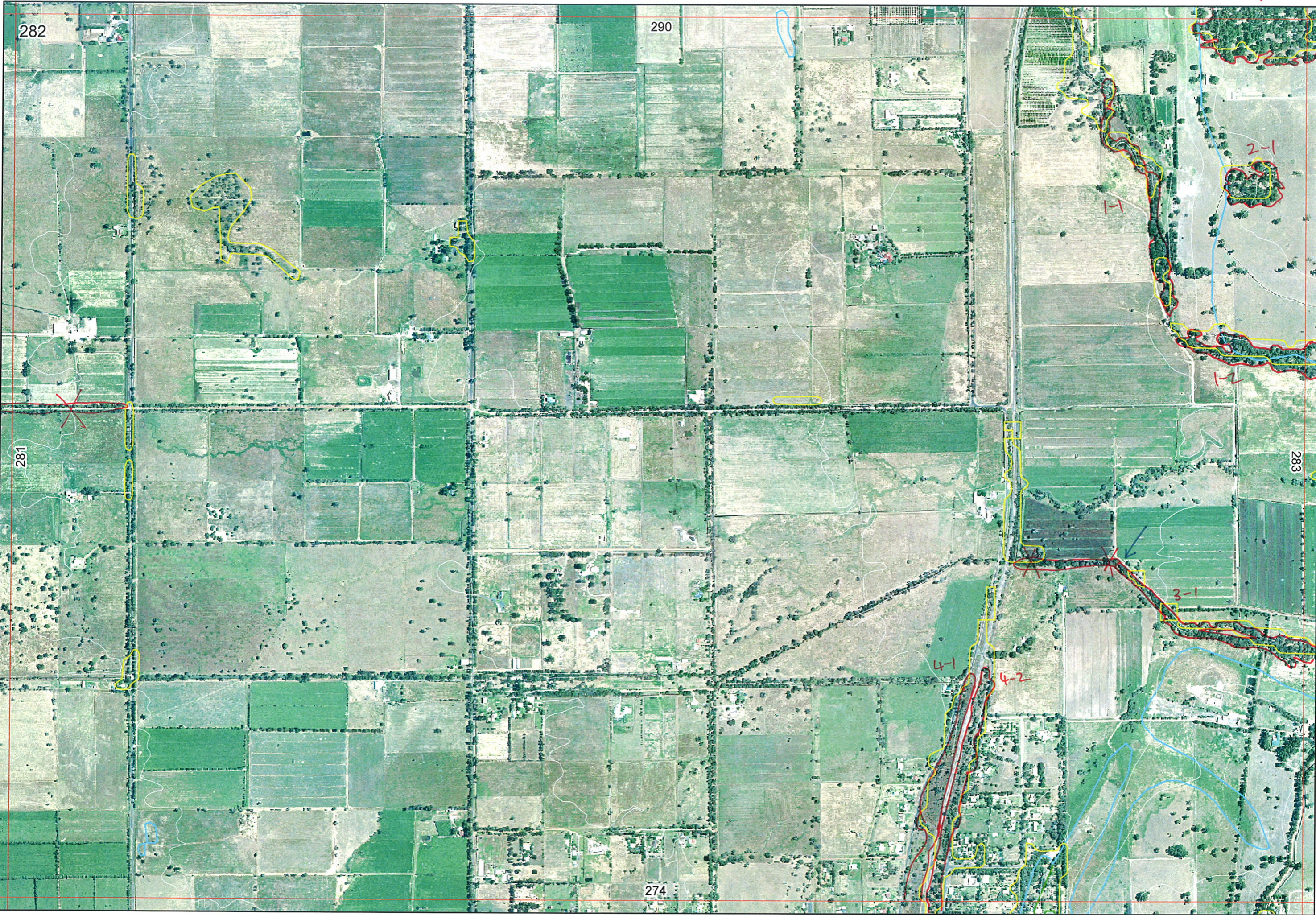


290/4-1  
↑



282

290

281

283

274

2-1

3-1

4-1

4-2

1-1

1-2

281-8-1  
←

→

↓ ↓

290/4-1  
↑

282

290

2-1

7-8-10  
←

281

283

3-1

4-1

4-2

274

↓ ↓

To A9 24/8/06



Eckersly Rd

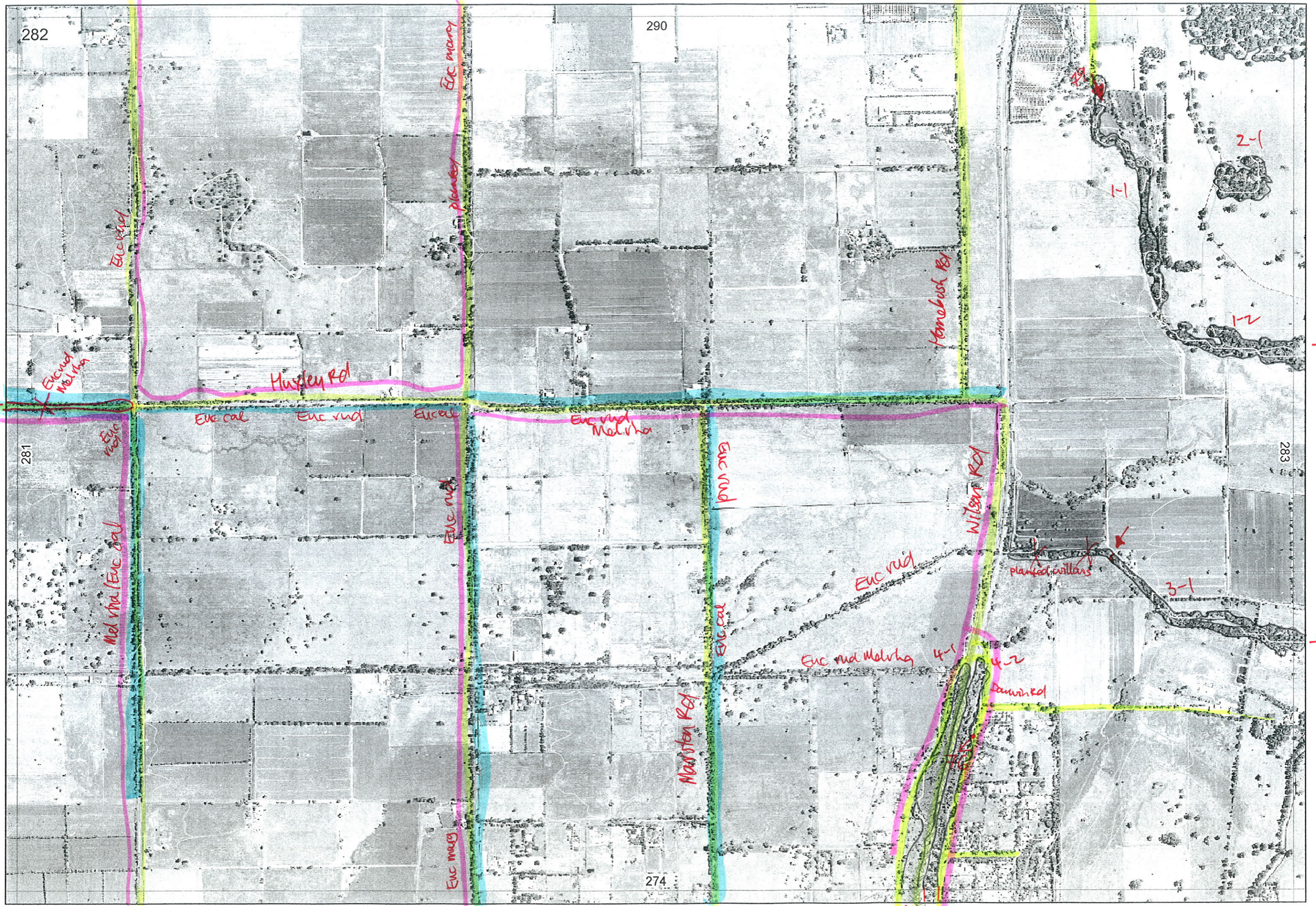
Brockman Rd

SW Railway

Clifton Rd

290/4-1

Harbour



282

290

281

283

274

Euc rud

Euc mang

planted

Honebush Rd

Musley Rd

Euc cal

Euc rud

Euc cal

Euc rud Mel vna

Euc rud

Wilson Rd

Euc rud

planted willows

3-1

Mel vna/Euc cal

Euc med

Euc cal

Euc rud Mel vna

4-1

4-2

dammed

Marston Rd

Euc mang

railway

2-1

1-2

1-1

281-8

→

→

→

Entered Bec 17/6/05  
17/5/06

Map Sheet Number 2902 Pre Field Recorder(s) Bridge/Bec Field Recorder(s) Bec Jodie 17/5 Swan Bioplan Vegetation Mapping Data

R E M	RE M2	XM AP	LIN TYPE	L I N E A R	M L U	U N I T S	U P L A N D ?	W E T L A N D ?	V I S I T ?	DETAIL/ Area Name	VEG CON	Field date 200_	OBS From	YNOTASS	D E T V I S I O N R E Q D	COMMENTS	VEG STRU C/DENS	FCT	DOMINANTS			
																			1	2	3	
1	1	N	channel	Y	P	1	N	Y	Y	Logue Brook	5-7	1715	edge	-	N		F		Euc rudis	mel rhaph	Euc cal	photo 79
1	2	Y	channel	Y	P	1	N	Y	Y		5-7	1715	aerial	no access	N		F		Euc rudis			
2	1	N	-	N	P	1	Y	N	Y		5-7	1715	aerial	no access	N		F		Euc cal			
3	1	Y	channel	Y	P	1	N	Y	Y	Clarke Brook drain	5-7	1715	distance	no access	N		F		Euc rudis	mel rhaph		
4	1	Y	rail	Y	P	2	N	Y	Y		5	1715	edge	-	N		W		Euc rudis	mel rhaph		
4	2	Y	rail	Y	P	2	N	Y	Y		5-7	1715	edge	-	N		W		Euc rudis	mel rhaph	Xan priess	photo 76
4	1	Y	rail	Y	P	2	N	Y	Y		5-7	1715	edge	-	N	Euc cal	TS		Hak prost	Xan priess	Vim junc	
4	2	Y	rail	Y	P	2	N	Y	Y		5-7	1715	edge	-	N		TS		Euc Cal	Vim junc	Xan priess	

Summary/General Comments