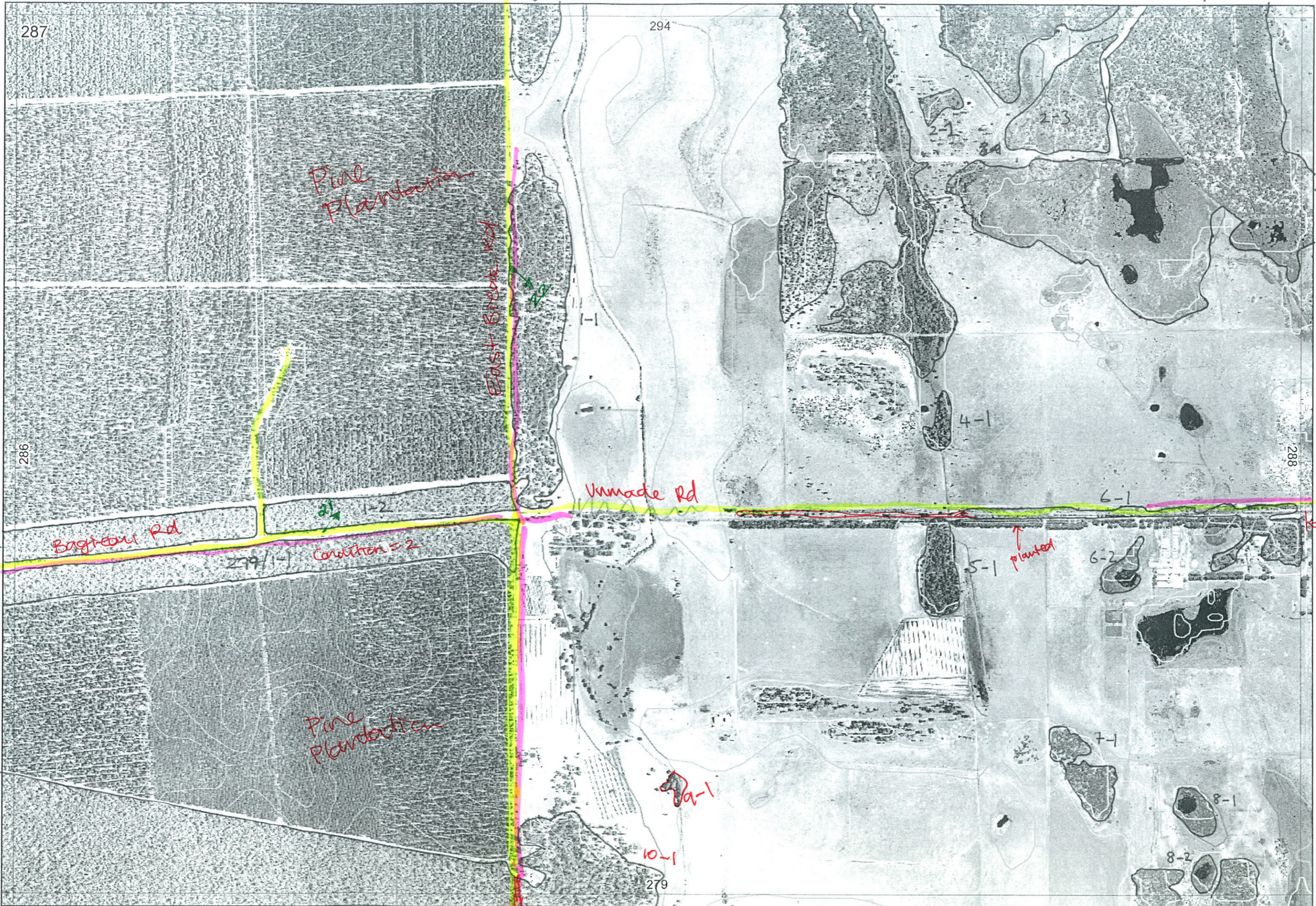




To Aq 24/8/06



287

294

286

288

Pine Plantation

Pine Plantation

East Break Rd

Unmade Rd

Bagneau Rd

Condition = 2

planted

end of made road

294/4-1

294/3-5

294/3-4

2-1

286/1-1

287/1-1

288/1-1

299/1-1

↓

10-1

279

9a-1

5-1

6-2

7-1

8-1

8-2

8-3

8-4

Map Sheet Number 287

Pre Field Recorder(s) Bridge/Bru

Field Recorder(s) BEC + Jodie

Swan Bioplan Vegetation Mapping Data

| R E M | RE M2 | XM AP | LIN TYPE | L I N E A R | M L U | U N I T S | U P L A N D ? | W E T L A N D ? | V I S I T ? | DETAIL/ Area Name | VEG CON | Field date 200_ | OBS From | YNOTASS | D E T V I S I O N R E C O R D | COMMENTS | VEG STRU CTURE DENS | FCT | DOMINANTS | | |
|-------------|----------|----------|-------------|----------------------------|-------------|-----------------------|---------------------------------|--------------------------------------|----------------------------|----------------------|------------|-----------------------|---------------------|-----------|---|--|------------------------------|-----|-----------|-------------|------------|
| | | | | | | | | | | | | | | | | | | | 1 | 2 | 3 |
| 1 | 1 | N | - | N | S | 1 | Y | N | Y | | 5.3 | 12/5 | Edge | - | N | Cornaby's head Bank att., Turst., Bank gra. | F | 25 | Euc marg | Ago flex | Xylo occ |
| 2 | 1 | Y | - | N | P | 3 | Y | Y | Y | | 4 | 12/5 | extreme distance | - | N | | F | | Mel rhaph | Mel prius | Aster base |
| | | | | | | | | | | | | | | | | | F | | Mel rhaph | | |
| | | | | | | | | | | | | | | | | | F | | Euc marg | Bank atten | |
| 2 | 2 | N | - | N | P | 1 | N | Y | Y | | 5 | 12/5 | aerial | NO ACCESS | N | | F | | Mel rhaph | | |
| 2 | 3 | N | - | N | P | 2 | Y | Y | Y | | 5 | 12/5 | aerial | NO ACCESS | N | | F | | Euc marg | Bank atten | |
| | | | | | | | | | | | | | | | | | TS | | Kung glab | Astart base | |
| 4 | 1 | N | - | N | P | 1 | N | Y | Y | | 4.7 | 12/5 | distance | - | N | | F | | Mel rhaph | | |
| 5 | 1 | N | - | N | P | 1 | N | Y | Y | | 4.3 | 12/5 | distance | - | N | | F | | Mel rhaph | | |
| 6 | 1 | N | 12/5 | Y | P | 2 | Y | Y | Y | | 5 | 12/5 | edge | - | N | with some planted Euc's | F | | Euc marg | Bank atten | Kung glab |
| | | | | | | | | | | | | | | | | | TS | | Kung glab | Astart base | Mel level |
| 6 | 2 | N | - | N | P | 1 | N | Y | Y | | 5.7 | 12/5 | aerial | NO ACCESS | N | | F | | Mel rhaph | | |
| 7 | 1 | N | - | N | B | 1 | Y | N | Y | | 5 | 12/5 | aerial | NO ACCESS | N | | F | | Euc marg | | |
| 8 | 1 | N | - | N | P | 1 | N | Y | Y | | 4 | 12/5 | extreme distance | NO ACCESS | N | | F | | Mel rhaph | | |
| 8 | 2 | N | - | N | P | 1 | N | Y | Y | | 4 | 12/5 | " | " | | | F | | Mel rhaph | | |
| 8 | 3 | N | - | N | B | 1 | Y | N | Y | | 4 | 12/5 | aerial | NO ACCESS | N | | F | | Euc mar | | |
| 8 | 4 | N | - | N | B | 1 | Y | N | Y | | 4 | 12/5 | extreme dist. | - | N | | F | | Euc mar | | |
| 1 | 2 | N | Road | Y | S | 1 | Y | N | Y | Bogian Rd | 3.7 | 12/5 | Edge | - | N | disturbance? Kung glab. | F | 25 | Euc mar | Bank atten | Ago flex |

photo 22

photo 21

Summary/General Comments: no 3? East Break - Bogian / Alexander Rd

