



289

296

288

290

281

7-3
↑

288-7-1
←

To A9 24/8/06

Johnston Rd Harvey Drain

7-3 ↑

289

296

planted

Mel prj
Bau Vunc

Mel prj
Kont-7/06
Bau Vunc

288

2-4

Konglab
Konglab
Konglab

Mel prj
Konglab

59

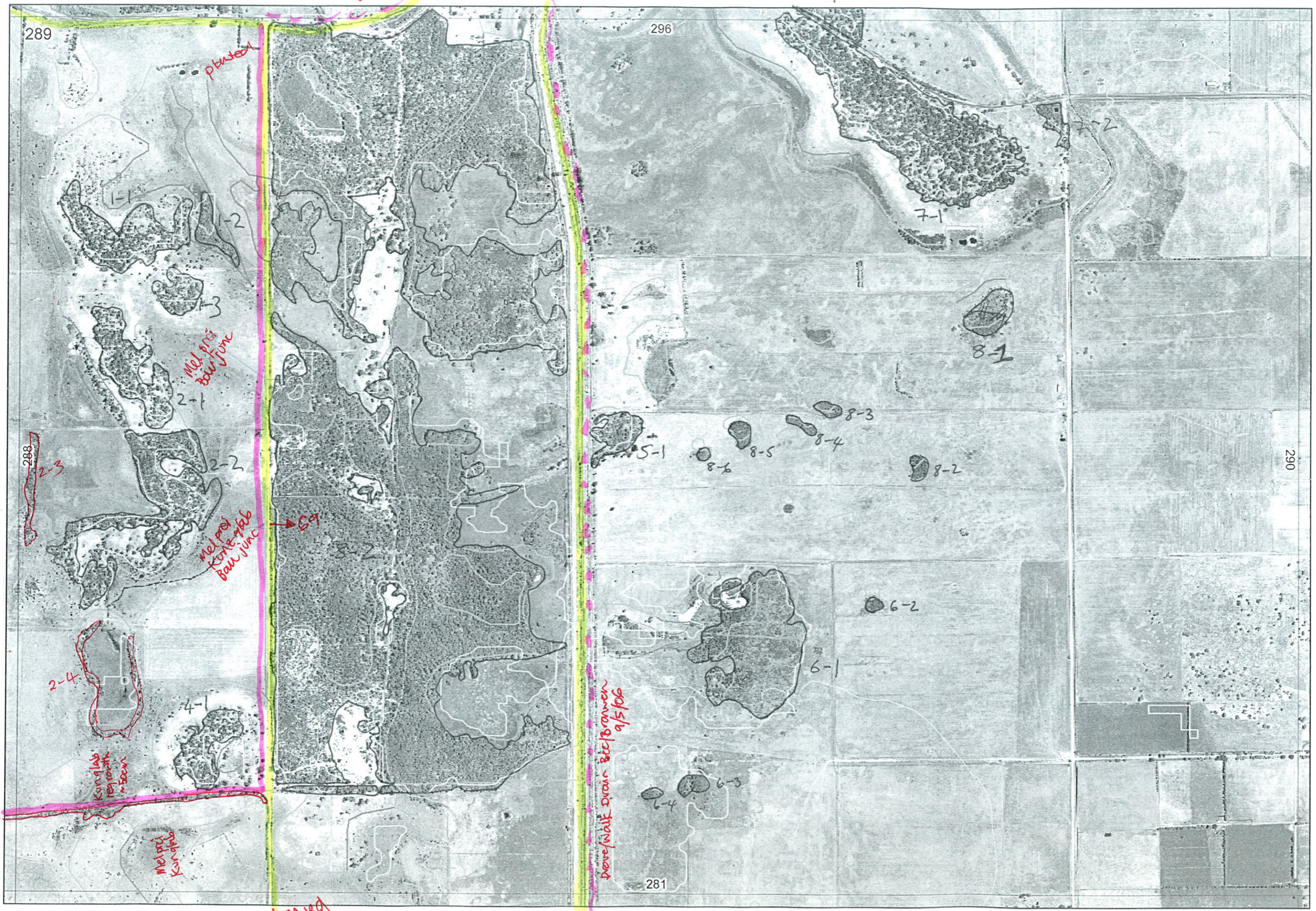
Drove/Walk Drain Bie/Bramen
9/5/06

281

Nicholson Rd

290

288-7-1 ↑



Map Sheet Number 289

Pre Field Recorder(s) Bec

Field Recorder(s) Bec + Jodie

16/5/06

Swan Bioplan Vegetation Mapping Data

R E M	R E M 2	X M A P	L I N E T Y P E	L I N E A R	M L U	U N I T S	U P L A N D ?	W E T L A N D ?	V I S I T ?	D E T A I L A r e a N a m e	V E G C O N	F i e l d d a t e 200_	O B S F r o m	Y N O T A S S	D E T E R M I N E D	C O M M E N T S	V E G S T R U C / D E N S	F C T	D O M I N A N T S		
																			1	2	3
1	1	N	BA -	N	B	1	Y	N	Y		5.3	16/5	general	no access	N		F	N/A	Euc marg	bank atten	Bank ilici
1	2	N	-	N	P	1	N	Y	Y		5	16/5	distance	no access	N		F	N/A	Mel priess	Astart fasc	Bau junic
1	3	N	-	N	B	1	Y	N	Y		5	16/5	distance	no access	N		F	N/A	Euc marg	Bank ilici	Bank atten
2	1	N	-	N	B	1	Y	N	Y		4.3	16/5	distance	no access	N		F	N/A	Euc marg	Bank atten	Bank ilici
2	2	N	? fringe	Y	B/P	2	Y	Y	Y		4	16/5	distance	no access	N		F	N/A	Mel priess	Kunz glab	sedges
2	3	N	? fringe	N	P	1	N	Y	Y		5	16/5	general	no access	N		F	N/A	Euc marg	Kunz glab	Bank atten
3	1	Y	-	N	B/P	4	Y	Y	Y		3.3	16/5	edge	-	Y	condition variable from v creek to degraded	F		Euc marg	Kunz glab	Xant priess
																	HS		Mel lat		
																see Bronwyns notes	F		Mel priess		
																	F		Mel rhaps	Mel taret	
3	2	N	-	N	B/P	4	Y	Y	Y		3	16/5	edge	-	Y		F		Euc marg	Bank ilici	Kunz glab
																	F		Mel rhaps		
																	F		Mel lat	Mel priess	
																see Bronwyns notes.					
4	1	N	-	N	B	1	Y	N	Y		4	16/5	edge	-	N		F	N/A	Euc marg	Bank ilici	Bank atten
2	4	N	? fringe	Y	P	1	N	Y	Y		5	16/5	distance	no access	N		F	N/A	Mel priess	Kunz glab	Xan priess

photo 6A

Summary/General Comments

Map Sheet Number 289

Pre Field Recorder(s) BCC

Field Recorder(s) Becu Bron 9/5 Swan Bioplan Vegetation Mapping Data

R E M	R E M 2	X M A P	L I N E T Y P E	L I N E A R	M L U	U N I T S	U P L A N D ?	W E T L A N D ?	V I S I T ?	D E T A I L A r e a N a m e	V E G C O N	F i e l d d a t e 2 0 0	O B S F r o m	Y N O T A S S	D E T V I S I O N R E C O R D	C O M M E N T S	V E G S T R U C T U R E / D E N S	F C T	D O M I N A N T S		
																			1	2	3
7	3	Y	-	N	B/p	1	Y	-	N		5.7	9/5	edge	-	N		F		Euc mang		
7	2	N	-	N	B/p	2	Y	Y	N		4.7	9/5	edge	-	N	This unit degraded (Reiger + Rot N-S)	W		Euc rad		
																	F		Mel pra		
7	1	N	-	N	B/p	1	Y	-	N		4	9/5/06	edge	-	N		F		Euc mang		Born all
8	1	N	-	N	B/p	1	-	Y	N		4	9/5/06	dist	-	N		W		Euc rad		Mel pra
8	2	N	-	N	B/p	1	-	Y	N		4	"	"	-	N		W		Mel rha		
8	3	N	-	N	P	1	-	Y	N		4	"	"	-	N		W		"		
8	4	N	-	N	P	1	-	Y	N		4	"	"	-	N		W		"		
8	5	N	-	N	P	1	-	Y	N		4	"	"	-	N		W		"		
8	6	N	-	N	P	1	-	Y	N		4	"	"	-	N		W		"		
6	1	N	-	N	P	1	-	Y	N		4.7	"	"	-	N		W		Mel vim.		
6	2	N	-	N	P	1	-	Y	N		4	9/5	dist	-	N		W		Mel rha		
5	1	N	-	N	P	1	-	Y	N		4	"	"	-	N		W		Mel pra		Euc. radis
6	3	N	-	N	P	1	-	Y	N		4	"	"	-	N		W		"		
6	4	N	-	N	P	1	-	Y	N		4	"	"	-	N		W		"		
3.1 opp 1-2																check Bronwens notes					

Summary/General Comments