



290

297

289

291

282

297-3-3

297-7-5

297-7-2

297-7-3

Ag

1-3

→ 1-2

→ 3-1

→ 2-2

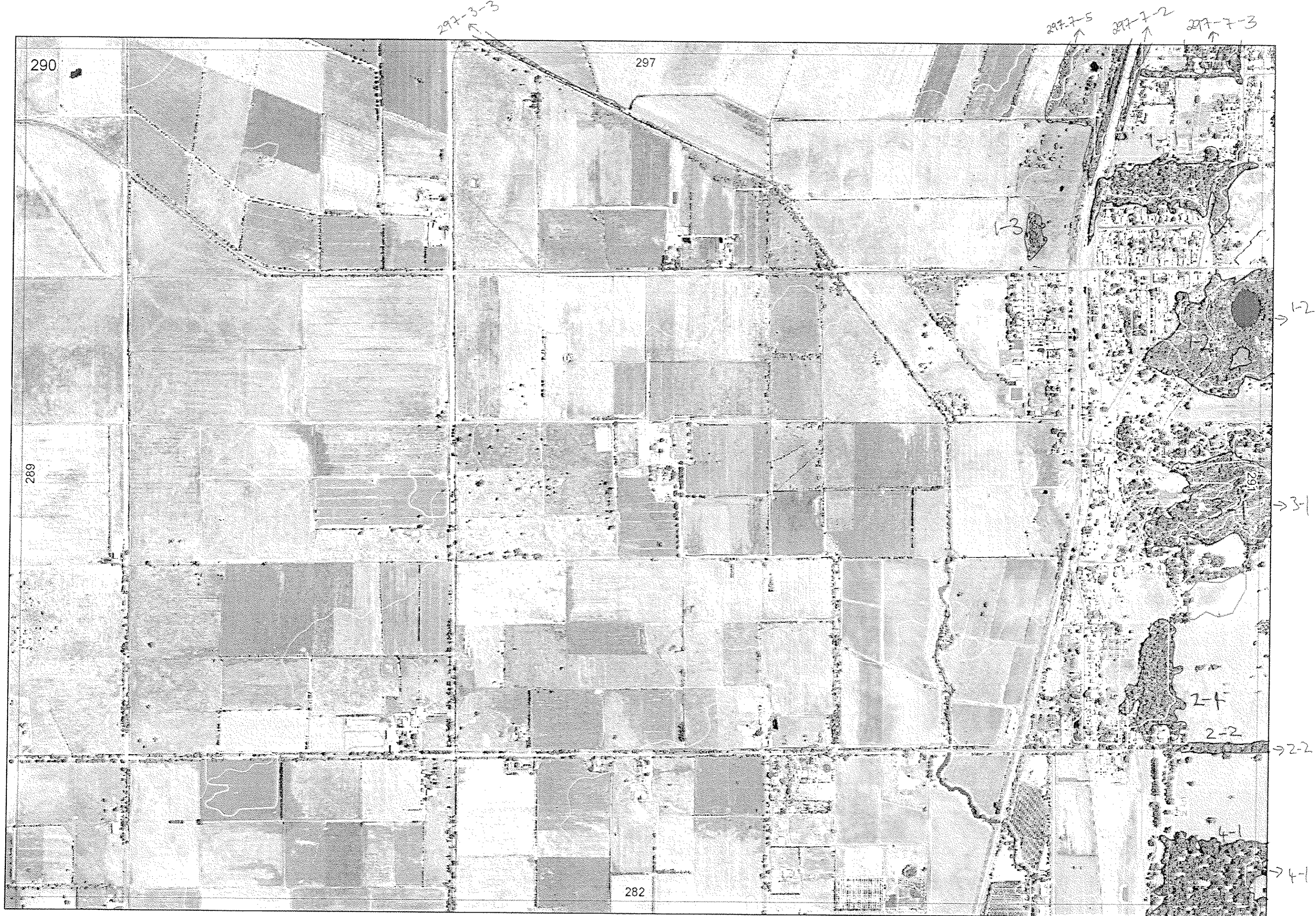
→ 4-1

2-1

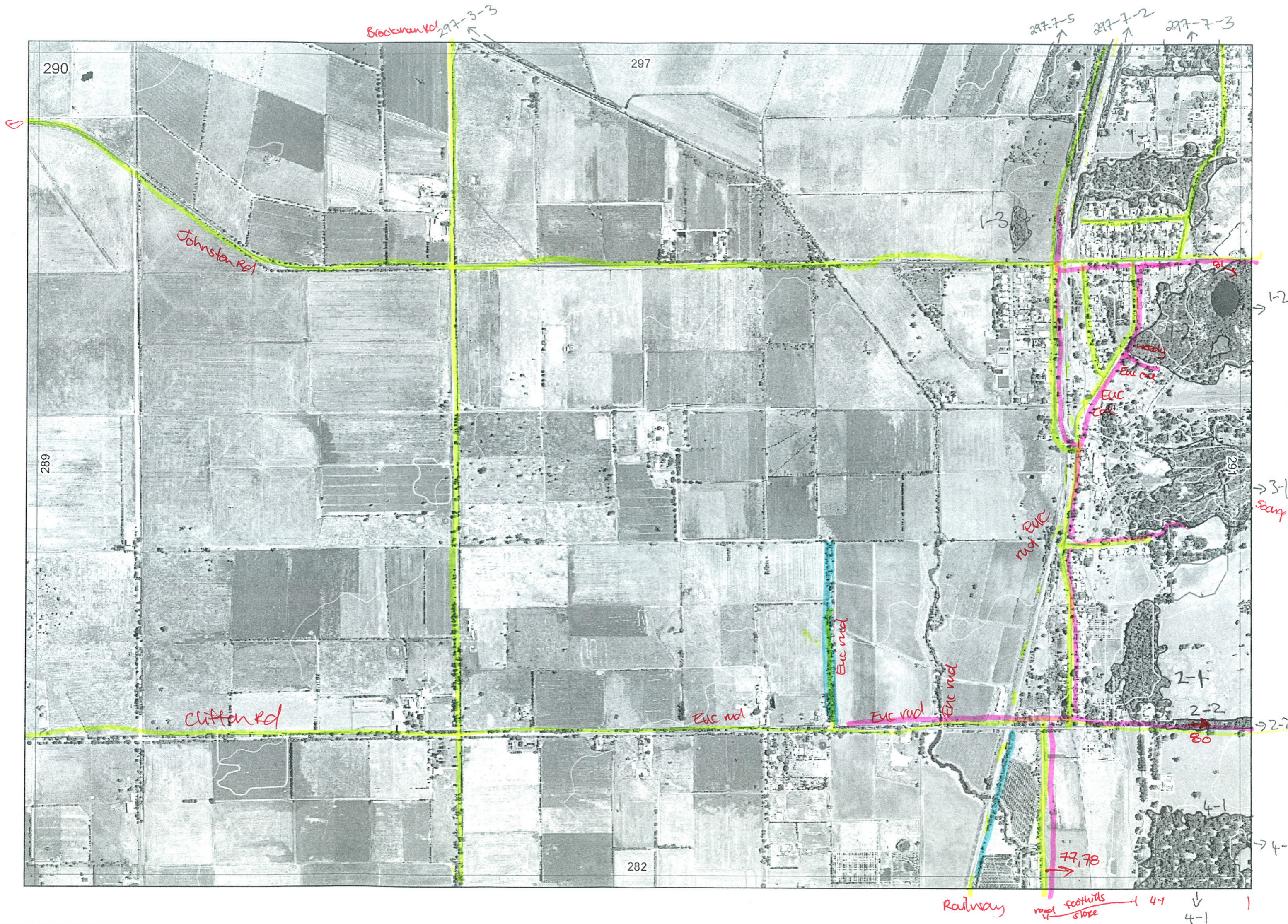
2-2

4-1

↓
4-1



✓ TO Aq 24/8/06



Map Sheet Number 290

Pre Field Recorder(s) Bridget

Field Recorder(s) Bec + Brennan

Swan Bioplan Vegetation Mapping Data

R E M	R E M2	X M A P	L I N E T Y P E	L I N E A R	M L U	U N I T S	U P L A N D ?	W E T L A N D ?	V I S I T ?	D E T A I L / A r e a N a m e	V E G C O N	F i e l d d a t e 200_	O B S F r o m	Y N O T A S S	D E T V I S R E Q D	C O M M E N T S	V E G S T R U C / D E N S	F C T	D O M I N A N T S			
																			1	2	3	
1	1	N	-	N	B	2	Y	Y	Y		3.7	1715	edge	-	N	Grey sand	W		Euc cal	Allo fra	Mac reid	photo 754
1	1																M		Mel rha	Mel lat	Ast fasc	753
1	2	Y	-	N	FD	2	Y	Y	Y		4	1715	edge	-	N	30 White-tail black cockatoos flying over (NW-S) condition varies from 5-3	F		Euc cal	Allo fras	Kunz glab	
													revis	no access	N		F		mel op	Kunz glab	Euc rudis	photo 81
1	3	N	-	N	P	1	N	Y			5.7	1715	distance	no access	N	Lantana, Flame tree	F		Mel rhaph	Euc rudis	Jun fall	
2	1	N	-	N	FD	1	Y	N	Y		5	1715	distance	no access	N		F		Euc marg	Bank grand	Allo fras	
2	2	Y	road	Y	FD	1	Y	N	Y		5.7	1715	edge	-	N		F		Euc cal	Euc marg	Xan piess	photo 80
3	1	Y	-	N	FD	3	Y	Y			4	"	"	"	Y	Scarp unit - to assess 2007 ↑ No - ridge hill shelf OR not assessed in field						
4	1	Y	-	N	FD	1	Y	N	Y		5.7	1715	distance	no access	N		F		Euc cal	Euc wand	Euc marg	photo 77/78

Summary/General Comments