

Ag

300/1-1
↑

300/3-1
↑

292

300

293

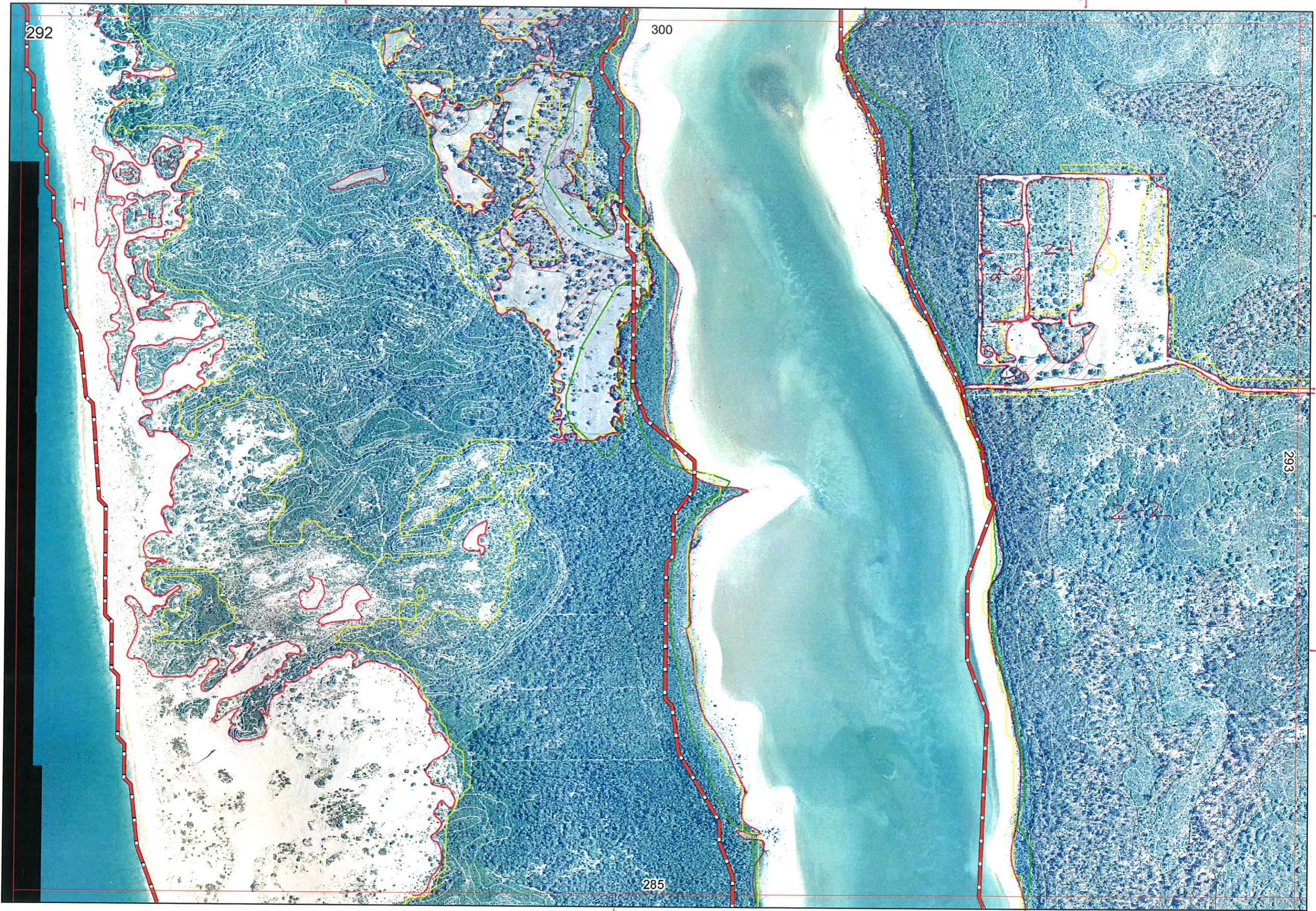
300/1
→ 3-1

→ 2-2

285

↓
300/1-1

↓
2-2



300/1-1
↑

300/3-1 Sent to Ag
↑

292

300

I

300/2-1
→



293

2-2

→ 2-2

285

↓
300/1-1

↓
2-2



300/1-1

300/2-1

292

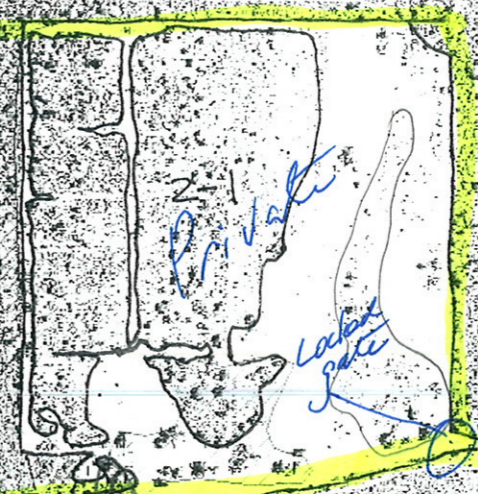
300

31/05/06

BJK to check
 292, 293, 299, 300, 301, 308, 309, 317, 318
 needs data entry and BJK infer 319, 326

I

300/2-1



P75 Section exposed dune

P74

pecky belt at West

Gen 80 Tent Ward

Seeding Transact E Lake Edge

78
 79
 80
 81
 82
 83
 P82
 Sampire (prot) Peppermint
 Wilsonia

Spz gl-b Tent

Py Mex.
 Apium prot
 Sam. repens
 Sol. heterop.

285

293

2-2

300/1-1

2-2

Map Sheet Number 292

Pre Field Recorder(s) GH

Field Recorder(s) BSE, EH, MG

Swan Bioplan Vegetation Mapping Data

R E M	RE M2	XM AP	LIN TYPE	L I N E A R	M L U	U N I T S	U P L A N D ?	W E T L A N D ?	V I S I T ?	DETAIL/ Area Name	VEG CON	Field date	OBS From	YNOTASS	D E T V I S R E Q D	COMMENTS	VEG STRUC/ DENS	FCT	DOMINANTS		
																			1	2	3
1	1	N	foreshore	Y	Q	1	✓		N			2006 3/5									
1	2	N		N	Q	1	✓		N												
1	3	N		N	Q	1	✓		N												
1	4	N		N	Q	1	✓		N												
2	1	N		N	S	3	✓		✓		QD	" distance					Ma SH			Eucalypt Eucdec Xantho	Eucalypt
2	2	Y		N	S	1	✓	✓	✓			3/10/06 within			Detailed notes in BSE notebook + blw aerial photography						
2	3	N		N	S	4	✓		✓		D						Ma SH			Eucdec Xantho	

Summary/General Comments