

306/4-1

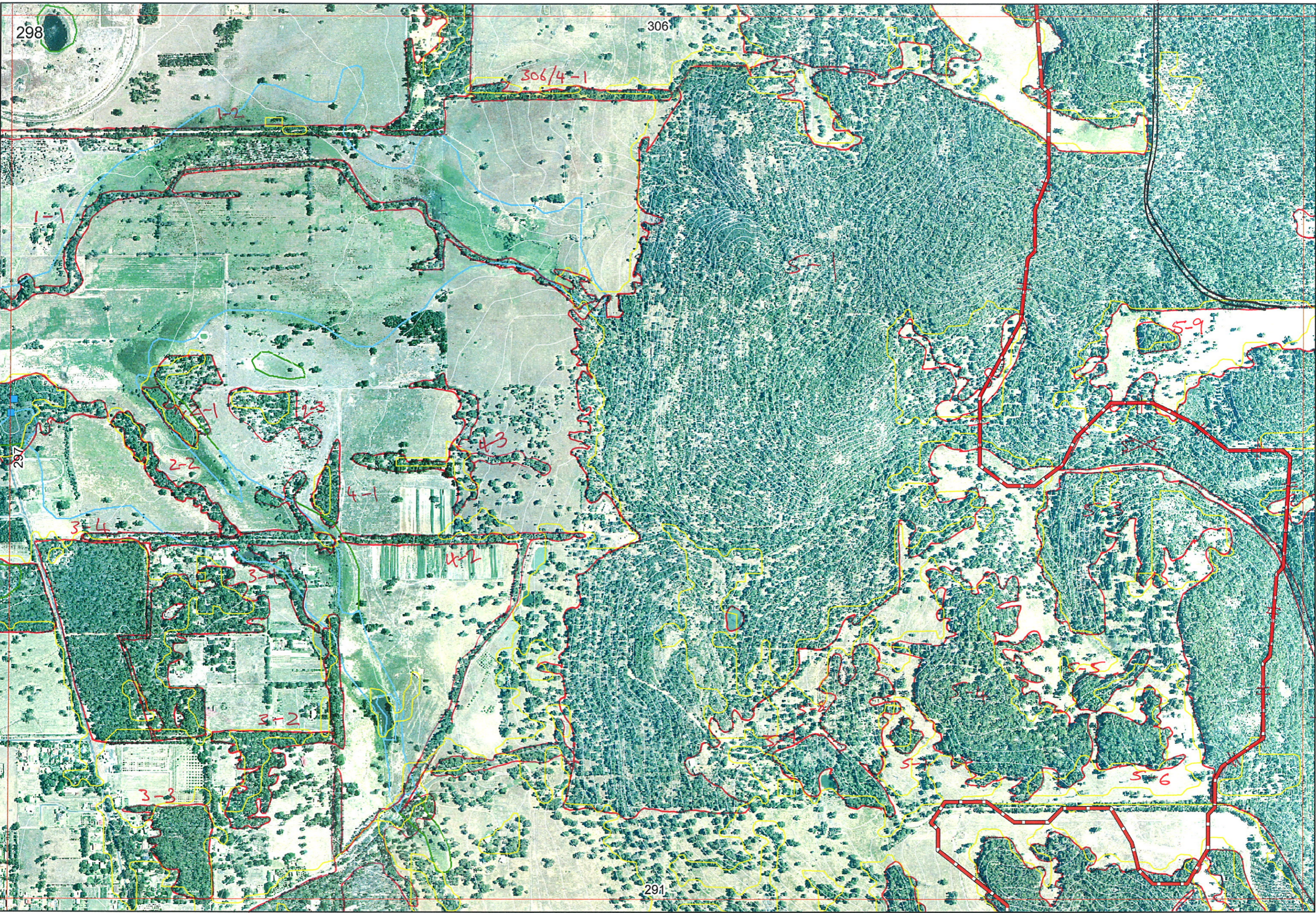
↑ 306/7-5

306-7-6

306-7-11

306-7-11

A9



1-1

297/6-1

297/7-1

306/7-11

5-1

5-1

5-3

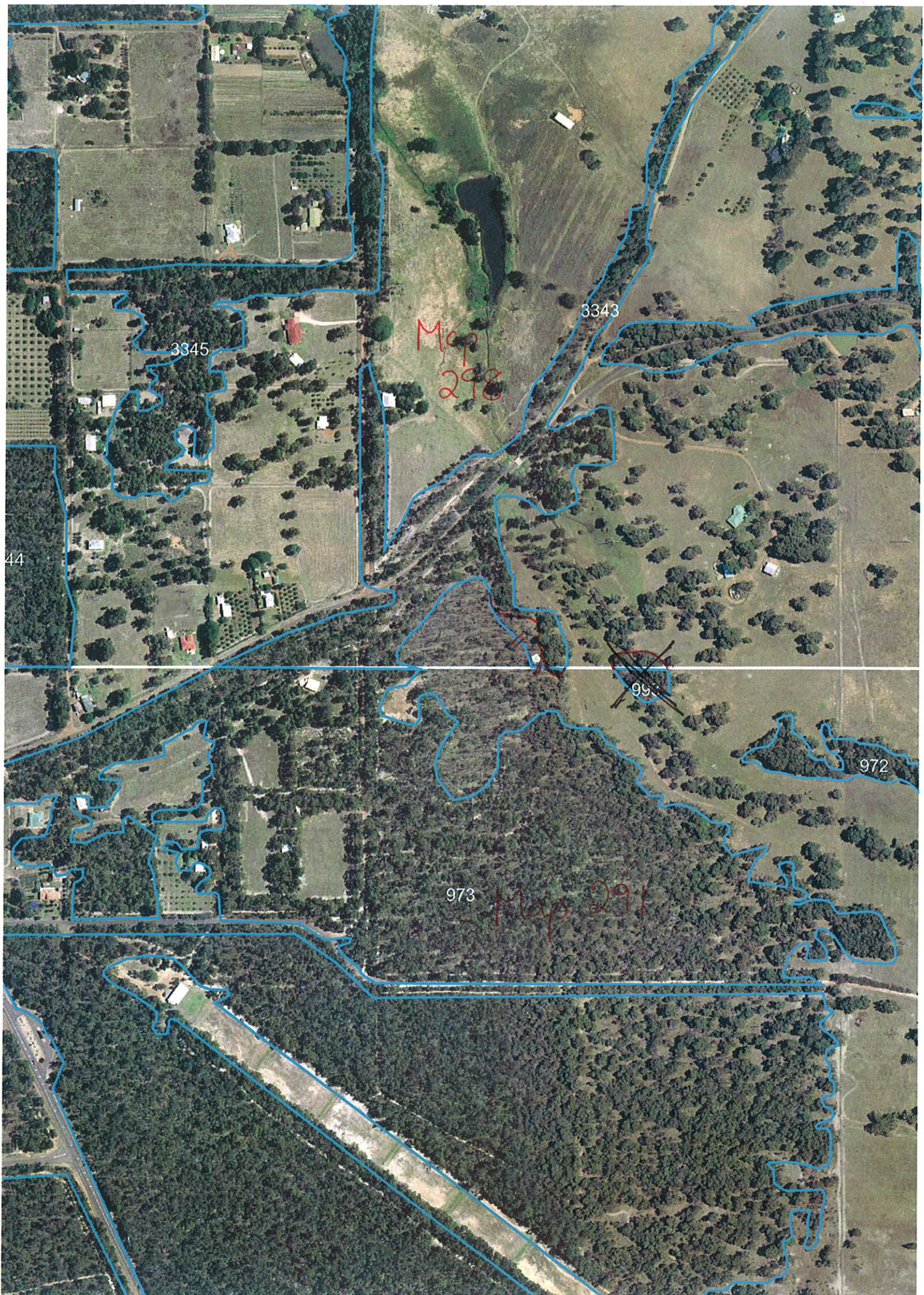
4-2

4-2

291/1-1

291/1-1

291/1-1



306/4-1

306/7-5

Sent to SA 30/8/06

298

306

306/4-1

1-2

5-1

1-1

297/6-1

5-1

2-2

4-3

5-1

3-4

4-1

5-3

297/7-1

3

4-2

3-2

3-3

5-6

291

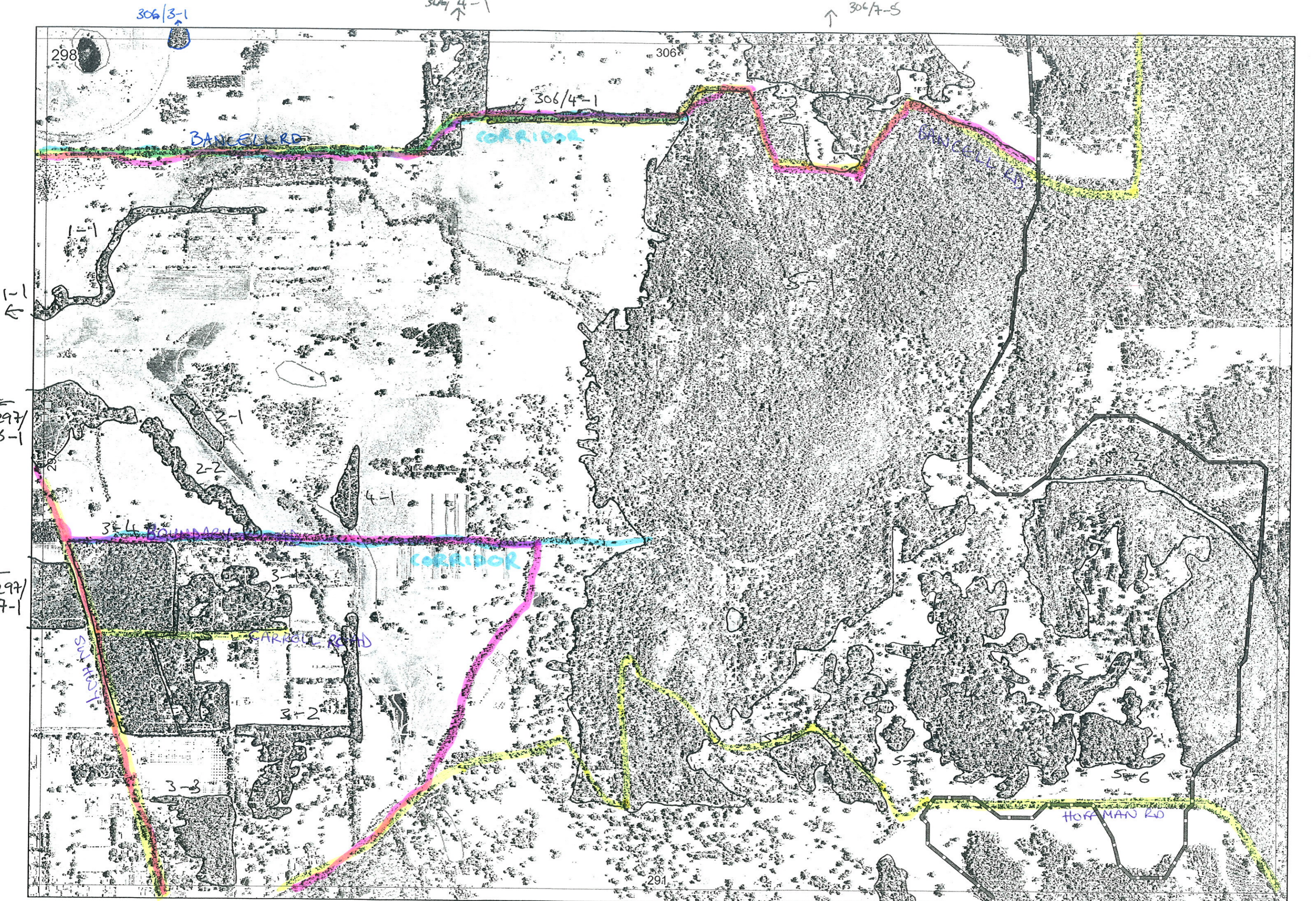
4-2

291/1-1

291/1-1

291/1-1





306/3-1

306/4-1

306/7-5

298

306

306/4-1

BANCELL RD

CORRIDOR

BANCELL RD

297/6-1

297/6-1

297/7-1

2-1

2-2

4-1

3-4 BOUNDARY

CORRIDOR

3-1

HARRIS ROAD

3-2

3-3

HARRIS ROAD

S-5

S-6

S-7

291

HOFMAN RD

R E M	RE M2	XM AP	LIN TYPE	L I N E A R	M L U	U N I T S	U P L A N D ?	W E T L A N D ?	V I S I T ?	DETAIL/ Area Name	VEG CON	Field date 200_	OBS From	YNOTASS	D E T E R M I N E D	COMMENTS	VEG STRUC/ DENS	FCT	DOMINANTS		
																			1	2	3
1	1	Y	channel	✓	P	1	✓	✓	N		d	2/6	distance	no access	N	Barcell BK	F		Euc rudis	Agol in	mel rhaph
2	1				P	2	✓	✓	N		cd-d	2/6	distance	no access	N		F		① Mel rhaph	② Euc marg	③ Euc cal
2	2		channel	✓	P	3	✓	✓	N		d-cd	2/6	edge	-	N		F		② Euc cal	③ mel pre	
3	1				P	1	✓	✓	N		d	2/6	edge	-	N	possibly similar to Yalloop fl	F	3c	① Euc cal	Euc marg	
3	2				P	2	✓	✓	N		d-g	2/6	distance	-	N		F		① Euc cal	② mel pre	③ Euc rudis
3	3				P	1	✓	✓	N		J	2/6	distance	-	N	Pass similar to Yalloop fl	F		Euc cal		
3	4				P	2	✓	✓	N		g-vg	2/6	edge	-	Y	Pass. similar to Yalloop fl are quer Euc cal over marker	F	3c	Euc cal	Euc marg	Bank atten
4	1				P	1	✓	✓	N		g	2/6	edge	-	N		F		Euc marg	Euc cal	Bank grand
5	1				DS	3	✓	✓	N	infer from Dwellingup State Forest (14)											
5	2				DS	1	✓	✓	N	"											
5	3				DS	1	✓	✓	N	"											
5	4				DS	1	✓	✓	Y	"											
5	5				DS	1	✓	✓	N	"											
5	6				DS	1	✓	✓	N	"											
5	7				DS	1	✓	✓	N	"											
5	8				DS	1	✓	✓	N	"											
5	9				DS	1	✓	✓	Y	"											
1	2		road	✓	P	2	✓	✓	Y		d-g	2/6	edge	-	N	some plantings & weeds (ain decamp, woody pear)	F		Euc rudis	Agol in	
																			Euc cal	Euc marg	

Summary/General Comments

2	3	N	-	N	P	1	✓	-	Y		cd-d	2/6	distance	-	N		F		Euc marg	Euc cal	
4	2	N	road	Y	P	1	✓	-	Y		vg	2/6	edge	-	Y	Bossial sp. Wardana grevillea wilsonii (collected). FRTBC x3	F		Euc marg	Euc cal	
4	3	N	-	N	P	1	✓	-	Y		cd-d	2/6	distance	-	N		F		Euc marg	Euc cal	