



296-5-5

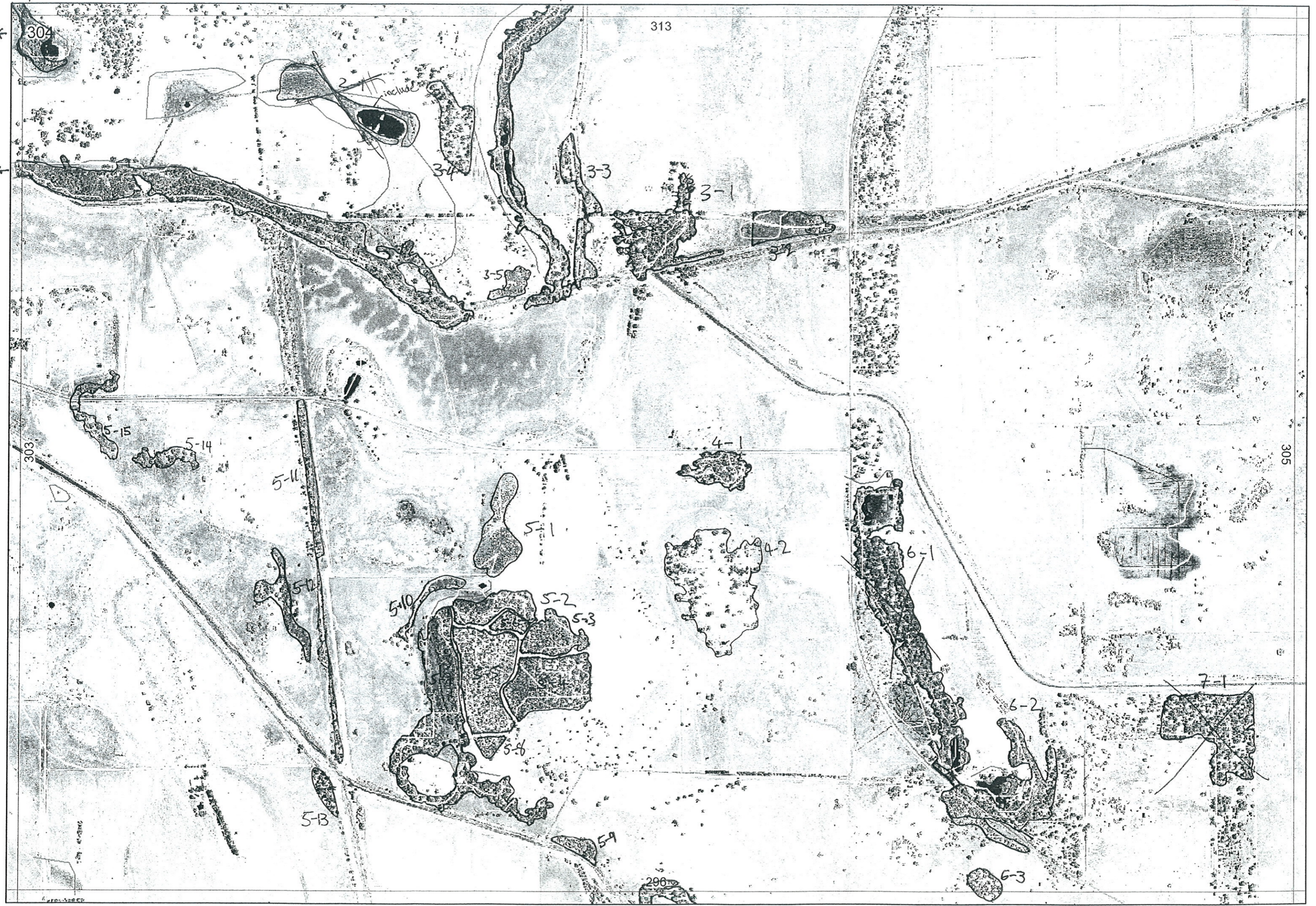
Sent to Ag 30/8/06

313/1-11

1-2

1-2

1



296-5-5

296

303

313

305

304

3-4

3-3

3-1

3-5

4-1

4-2

6-1

7-1

6-2

6-3

5-11

5-14

5-15

5-12

5-1

5-10

5-2

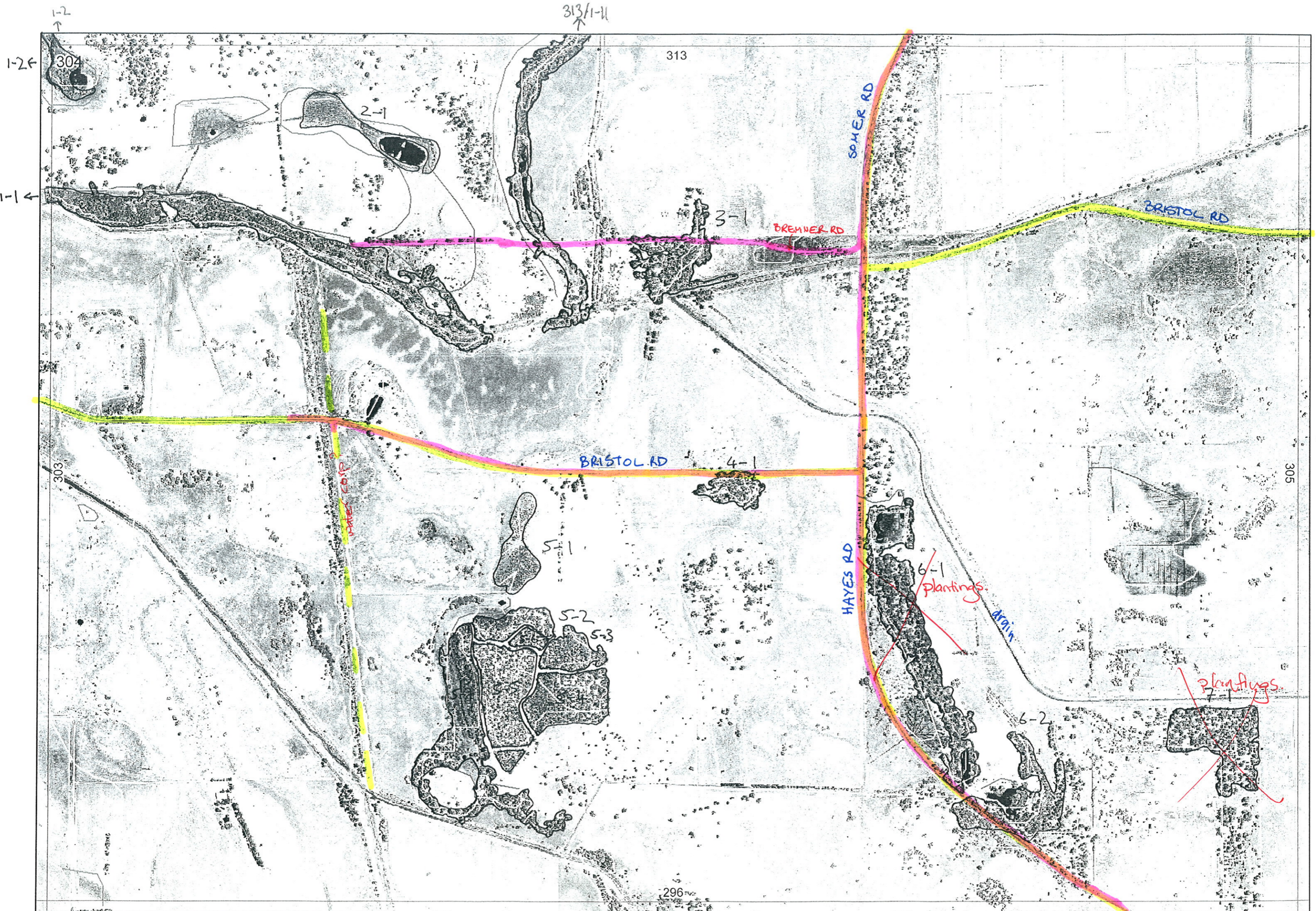
5-3

5-6

5-B

5-9





R E M	RE M2	XM AP	LIN TYPE	L I N E A R	M L U	U N I T S	U P L A N D ?	W E T L A N D ?	V I S I T ?	DETAIL/ Area Name	VEG CON	Field date 200_	OBS From	YNOTASS	D E T V I S R E Q D	COMMENTS	VEG STRU C/ DENS	FCT	DOMINANTS		
																			1	2	3
1	1	Y	channel	Y	R	I	N	Y	Y		d	2/6	distance	no access	N	recently burnt - still smoking	W		Euc rudis	mel rhaph	mel pre
2	1	N		N	B	I	N	Y	Y		d	2/6	distance	no access	N	tree plantings	SH		Ast pas		
3	1	N		N	B	I	N	Y	Y		g-vg	2/6	edge	-	Y	Kingia aust, Eya ave, Hib hyp?	F		Euc cal		
4	1	N		N	B	I	N	Y	N		cd-d	2/6	distance	no access	N		W		Euc marg	Euc cal	
5	1	N		N	P	1	N	Y	N		cd-d	2/6	distance	no access	N		S		Mel pre	mel rhaph	Juncus sp.
5	2	N		N	P	2	Y	Y	Y							same as 5-3					
5	3	N		N	B	1	Y	N	Y		d	2/6	distance	no access	N		TS		King glab	maybe some Euc marg	
5	4	N		N	B	1	Y	N	N							same as 5-3					
5	5	N		N	B	1	Y	N	N							"					
5	6	N		N	B	1	Y	N	N							"					
5	7	N		N	P	2	N	Y	Y		d	2/6	distance	no access	N		F		Euc cal	mel rhaph	Euc rudis?
5	8	N		N	B	1	Y	N	N							same as 5-3					
6	1	N	channel	Y	B	1	N	Y	Y							plantings					
6	2	N		N	P	2	N	Y	N		cd-d	2/6	edge	-	N	mel teret, mel lat in roadside Baumea articulata	F		① Euc rudis	① mel rhaph	② Euc cal
7	1	N		N	P	1	Y	N	N							plantings					
3	2	N		N	P	3	Y	Y	Y		Very good	2/6	edge	-	Y		F		Euc cal		
																see notebook	SH		mel lat	Hib marg	Chaetothus?
																			Mel lateriflora	mel osul	

Summary/General Comments

33	N	Channel	Y	P	1	N	Y	Y			d	2/6	edge	-	N		W		mel rhaph	Euc rudis	
34	N	-	N	P	1	Y	N	Y			cd-d	2/6	distance	no access	N		F		Euc marg	Euc cal	
35	N	-	2	P	1	Y	N	Y			d-cd	2/6	distance	no access	N		SH		king glab		

PTO

4-2 - same as 4-1

6-3 N - NP1NY Y — d-cd 2/6 distance ^{no} access N — F - mel raph

5-9 N - N — d. aerial F mel raph?

5-10 N - NP1NY Y — d 2/6 distance ^{no} access N — F mel raph

5-11 N channel Y P1NY Y — g 2/6 distance ^{no} access Y mel lat F Euc radis mel raph mel vim

5-12 N - NP1NY Y — d 2/6 distance " " N — F mel raph

5-13 N — NP1NY Y — d 2/6 distance " " N — F Euc cal

5-14 { same as 5-12.

5-15 N — NP2NY Y — d 2/6 distance " " N — F mel raph
mel pre mel raph Junctis Sp.