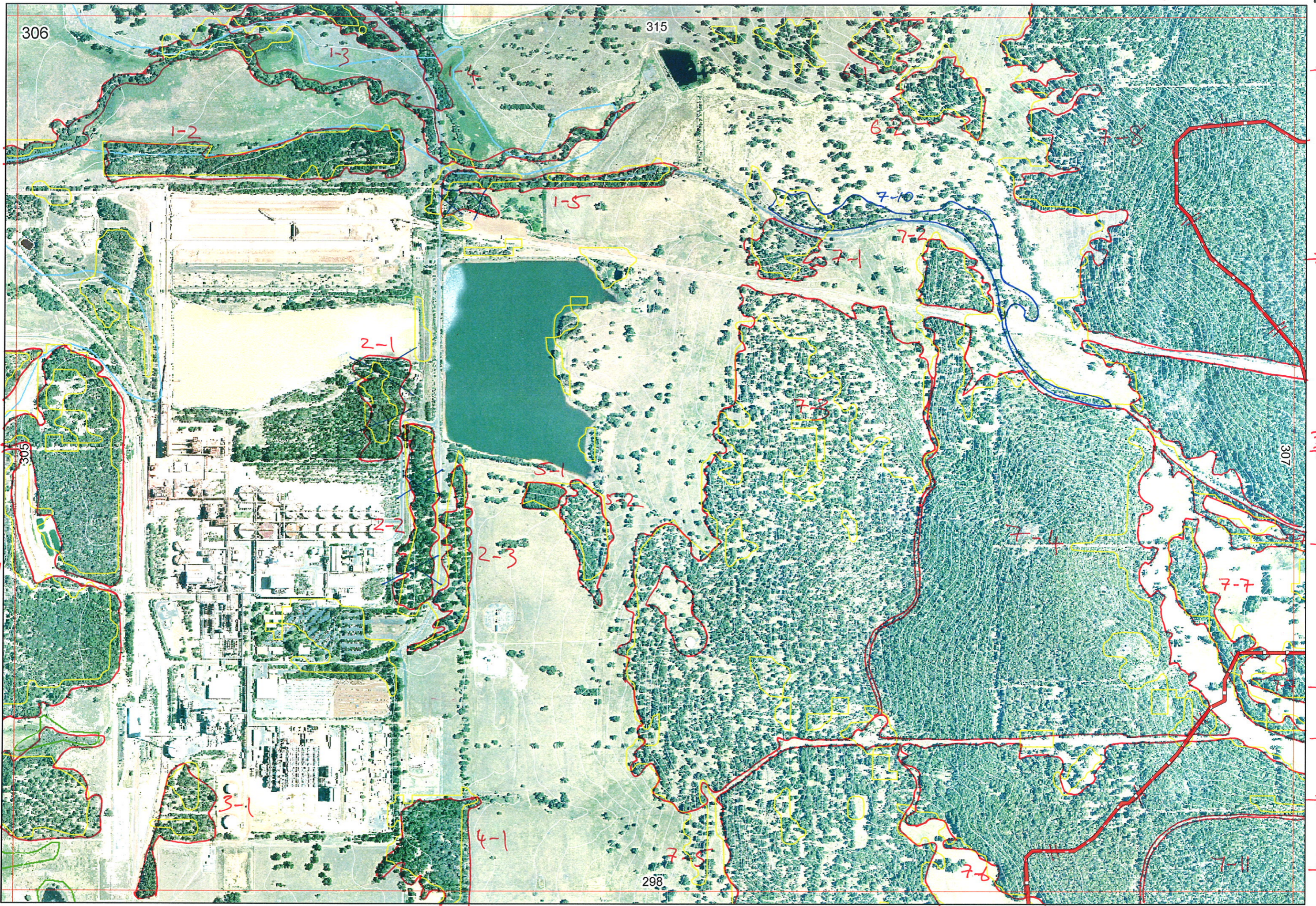


↑ 7-8



306

315

307

298

1-1
←

1-2

1-3

1-5

6-2

7-8

→ 7-8

→ 7-8

305/
4-1
←

2-1

306/
1-4
←

2-2

2-3

5-1

5-2

7-2

7-1

7-2

7-10

→ 7-9

→ 7-7

305/
4-4
←

7-7

→ 7-7

→ 7-7

305/
4-5
←

3-1

4-1

7-5

7-6

7-11

→ 7-11

↓ 7-5

↓ 7-6

↓ 7-11

Sent to Ag
↑ 7-8
30/8/06



← 1-1

305/ ↑ 1-1

306/ ↑ 1-1

305/ ↑ 1-4

305/ ↑ 1-5

7-8

→ 7-8

7-9 →

→ 7-7

→ 7-7

→ 7-11

↓ 7-5

↓ 7-6

↓ 7-11

can be seen from 315

↑ 7-8

306

315

77-8

1-1
←

1-2

1-3

1-5

WILLOWDALE RD

WILLOW DRIVE

7-1

7-2

305/
4-1

2-1

MAW

306/
1-2

2-2

2-3

MAW

305/
4-4

4-1

298

7-9
7

7-4

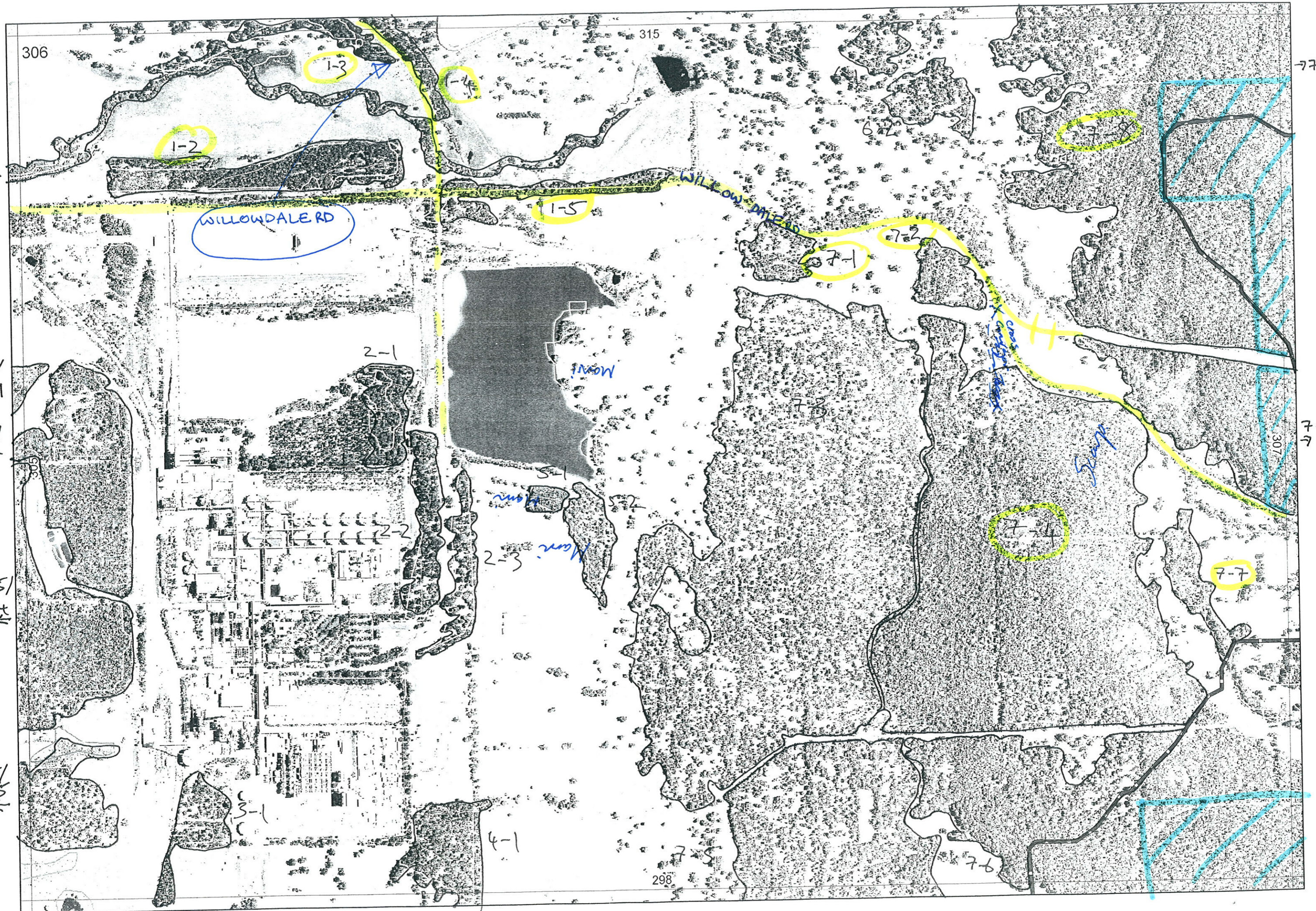
7-7

305/
4-5

3-1

7-6

3-1
↓



Map Sheet Number 306

Pre Field Recorder(s) BH

Field Recorder(s)

Swan Bioplan Vegetation Mapping Data

Bonnie Lighty
Esm. Harris
Sharon Zenderawa
11/6/66

R E M	RE M2	XM AP	LIN TYPE	L I N E A R	M L U	U N I T S	U P L A N D ?	W E T L A N D ?	V I S I T ?	DETAIL/ Area Name	VEG CON	Field date 2006 1/6	OBS From	YNOTASS	D E T V I S R E O D	COMMENTS	VEG STRU C/ DENS	FCT	DOMINANTS		
																			1	2	3
1	1	Y	channel	✓	FD	1	✓	✓	N												
1	2	N		N	P	1	✓														
1	3	Y	channel	✓	FD	1	✓	✓	✓		5.7	1/06	Edge				F			Euc. cul	
1	4	Y	road	✓	FD	1	✓	✓	✓												
1	5	N	road	✓	FD	1	✓		✓		5.7	1/06	Edge				F			Euc. cal	
2	1	N			P	1	✓		✓		6	1/06	Edge			Plantings					
2	2	N	road	✓	P	1	✓		✓		6	1/06	Edge			Plantings					
2	3	N	road	✓	P	1	✓		✓		6	1/06	Edge			Plantings Plus Mirri Jarra L	W			Euc. cal	Euc. mar
3	1	Y			P	1	✓		N		5						F				
4	1	Y			FD	1	✓		N							ACCESS via road on sheet 298 TEC Site 10 - DRA Tetraia Rancell 1 & 2 australiensis	F				
5	1	N		N	FD	1	✓		N												
5	2	N		N	FD	1	✓		N		5										
5	1	N		N	DS	1	✓		N		5.7						F				
6	2	N		N	DS	1	✓		N		5.7						F				
7	1	N		N	DS	2	✓	✓	✓		5.7	1/06	Edge				F			Euc. cal	
7	2	N		N	DS	1	✓		✓		5	1/06	Edge				F			Euc. cal	
7	3	N		N	DS	1	✓		N		5.7						F			Euc. cal	
7	4	N		N	DS	2	✓		Y								F				

Summary/General Comments

Map Sheet Number 306

Pre Field Recorder(s) BA

Field Recorder(s) BJK, EH, S...

Swan Bioplan Vegetation Mapping Data

R E M	RE M2	XM AP	LIN TYPE	L I N E A R	M L U	U N I T S	U P L A N D ?	W E T L A N D ?	V I S I T ?	DETAIL/ Area Name	VEG CON	Field date 200_	OBS From	YNOTASS	D E T V I S R E Q D	COMMENTS	VEG STRU C/ DENS	FCT	DOMINANTS		
																			1	2	3
75	Y				DS	1	✓		N		57										
76	N				DS	2	✓		N												
77	N				DS	1	✓		N												
78	Y				DS	2	✓		N												
710		Road		Y	DS	1	✓		✓		5	1/06	Edge				F		E cal		
79																					
711																Added by KC 28/8/06					

Summary/General Comments