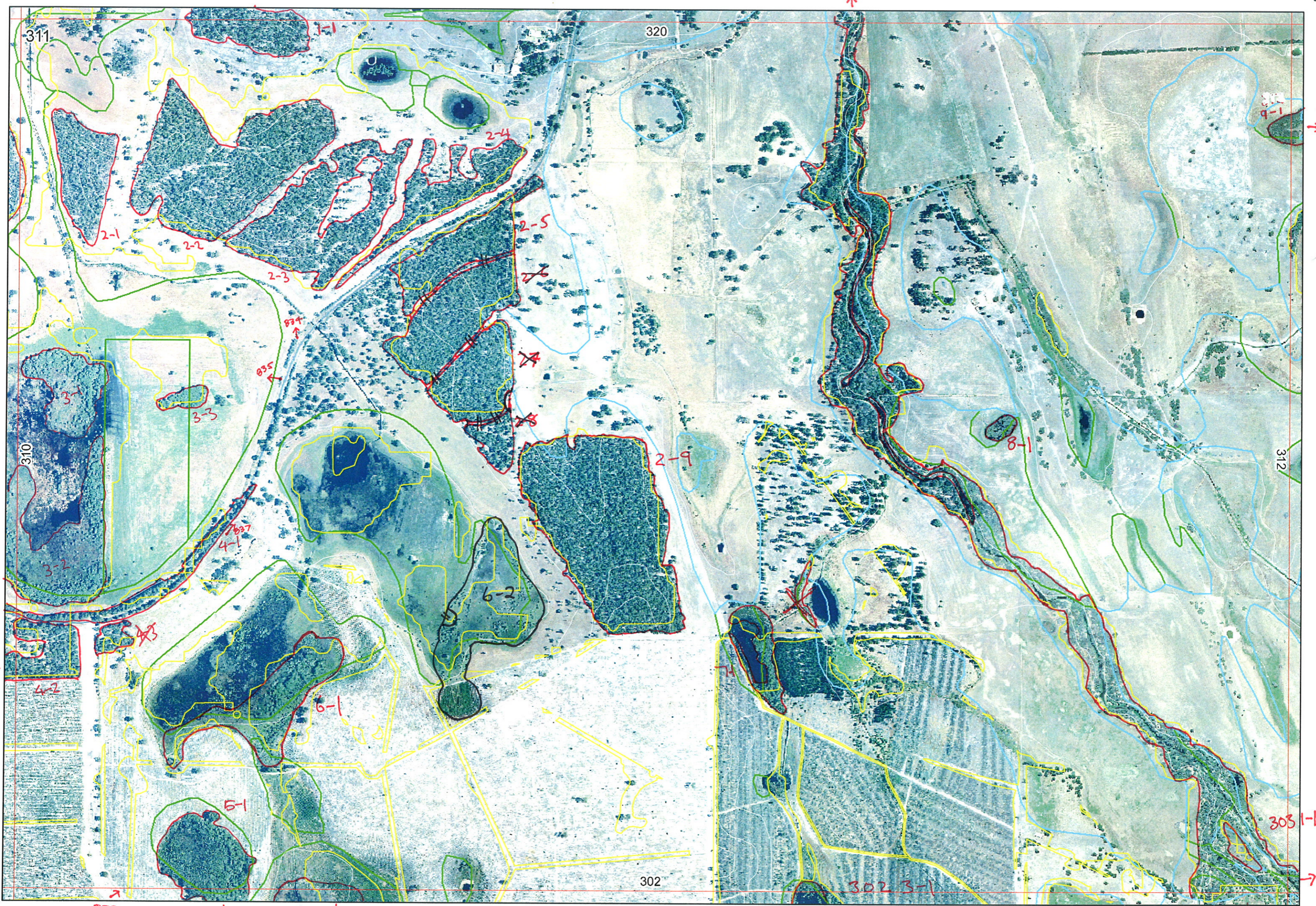


Ag



311

320

310

312

302

303/1-1

29-1

305/1-1

302/3-1

303/1-1

302/2-4

302/3-1

↑

↑

838

↓

↓

↓

↓

→

↑

↑

834

835

837

833

→

↓

↓

↓

↓

→

↑

↑

838

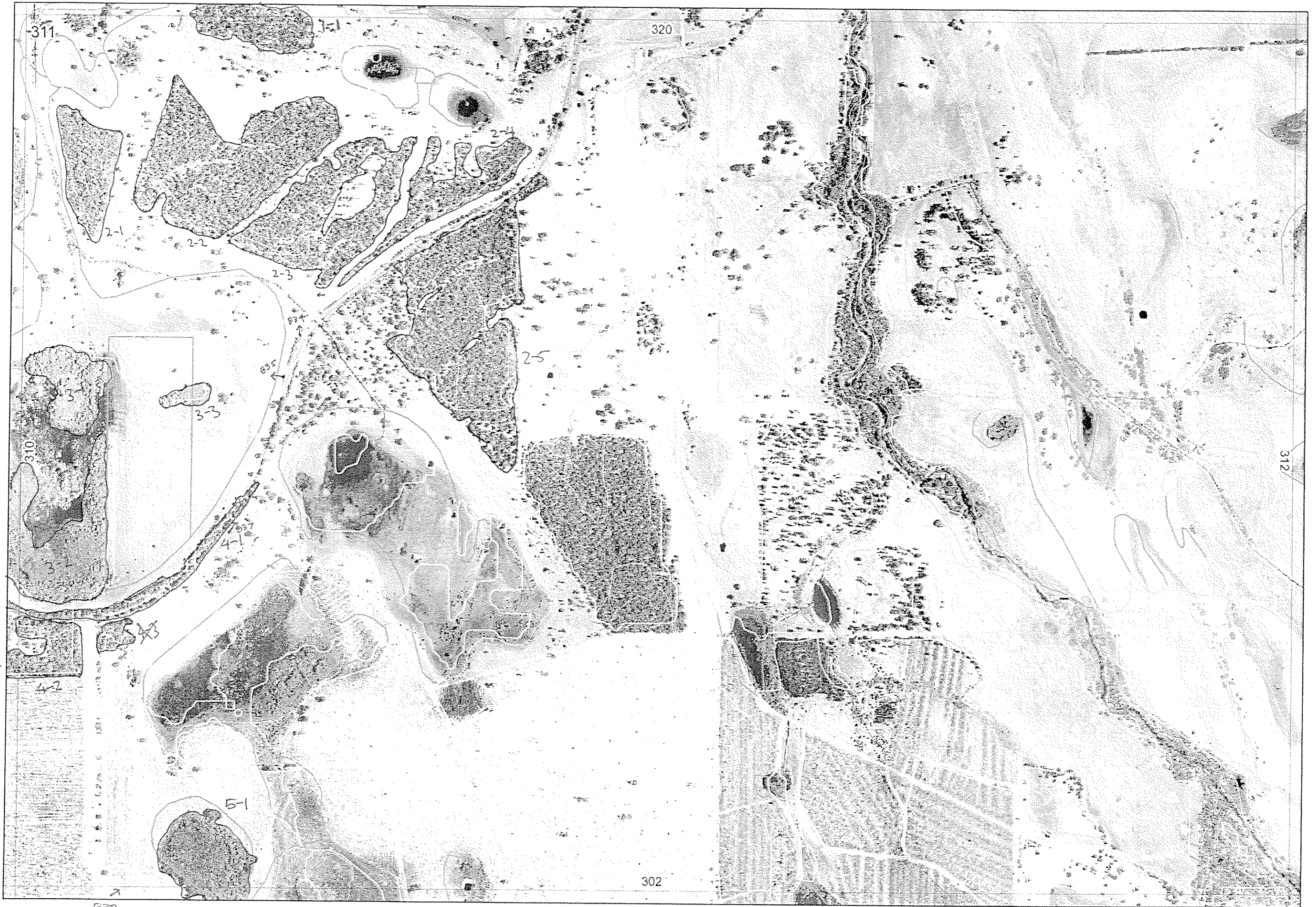
↓

↓

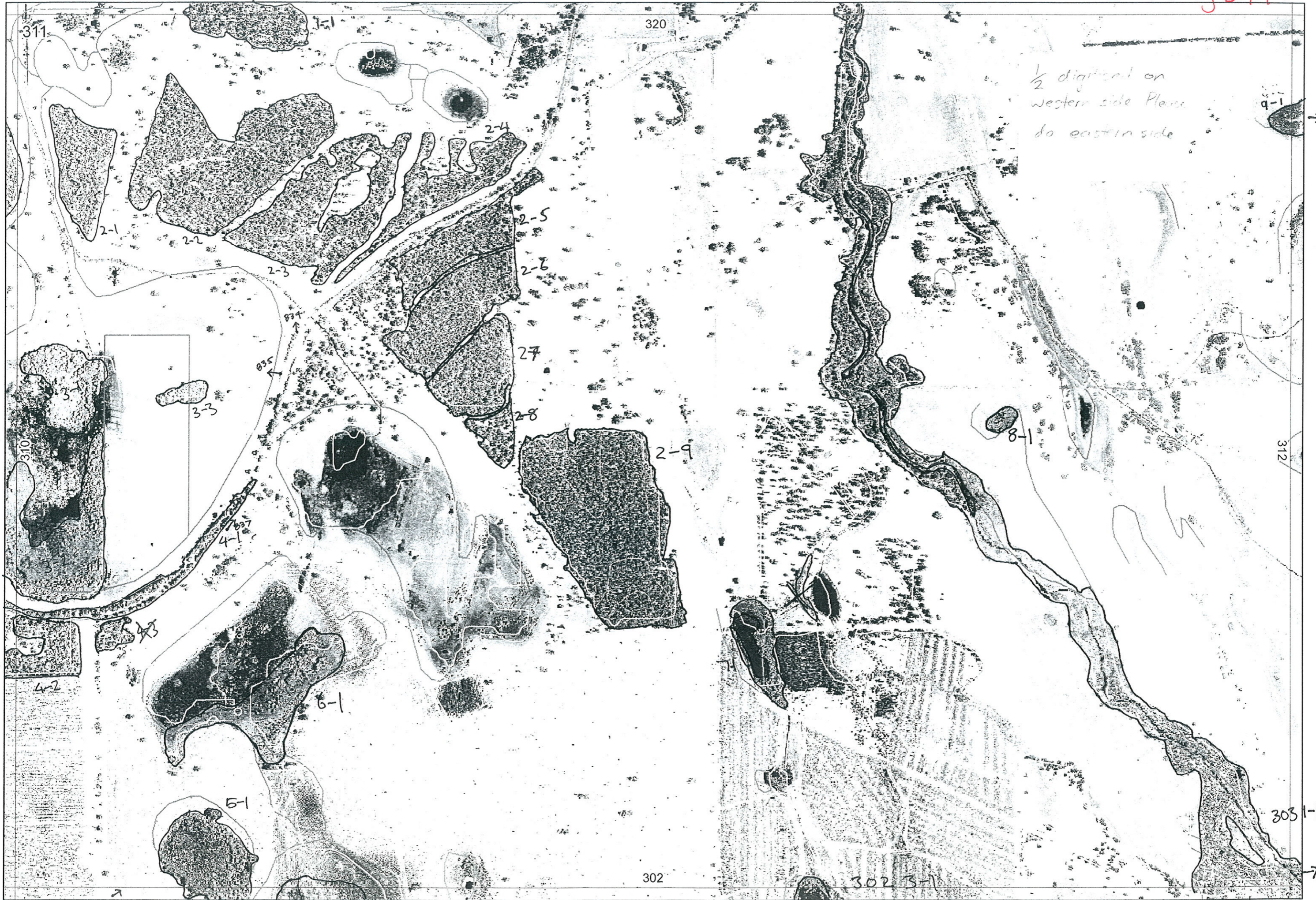
↓

↓

→

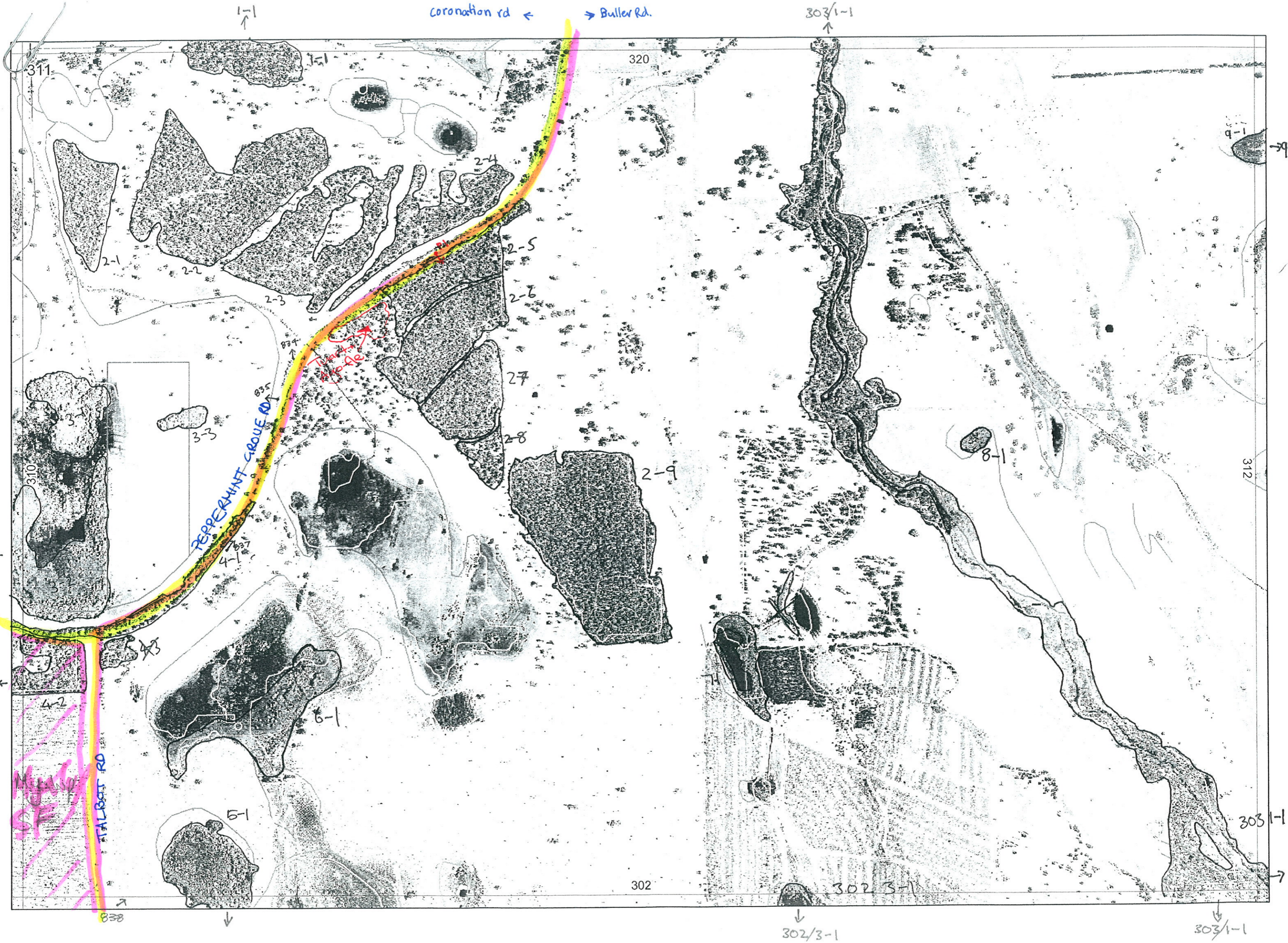


Sent to Ag 30/8/06



1/2 digitized on western side Please do eastern side

EEEA



311

Basal andean

Serpentine



see 310

see 310

Study Area boundary

311

2-7

2-8

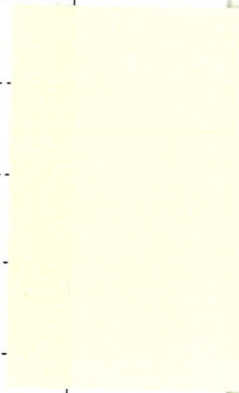
2-6

R E M	RE M2	XM AP	LIN TYPE	L I N E A R	M L U	U N I T S	U P L A N D ?	W E T L A N D ?	V I S I T ?	DETAIL/ Area Name	VEG CON	Field date	OBS From	YNOTASS	D E T V I S R E Q D	COMMENTS	VEG STRUC/ DENS	FCT	DOMINANTS		
																			1	2	3
1	1	✓			B	1	✓	✓			3						WL				
2	1				B	1	✓	✓			3						WL				
2	2				B	1	✓	✓			3						WL				
2	3				B	1	✓	✓			3		Distance			eucmar, euccal, kungla, banili	WL				
2	4				B	1	✓	✓			3		Edge			euccal, eucal, kungla, banili.	WL				
2	5				B	1	✓	✓			2		Edge.			banatt, euccal, eucmar, xylocc, kungla, xanpre, macrei	F				
3	1				B	2	✓	✓			3			No Access.			F				
3	1 <sub>2</sub>										3			No Access			Sedge				
3	2	✓			B	2	✓	✓			3		Edge			Melrha, over sedges, eucrud.	F				
3	2 <sub>2</sub>										3		Edge				Sedge				
3	3				B	1	✓	✓			5-7		Dist.			melrha, eucrud.	F				
4	1	✓	Road	✓	B	1	✓	✓			4-7		Edge			Agofle, Euccal, Xanpre, banatt, Hibhyp, Horcom, bangra.	WL				
4	2	✓			B	1	✓	✓			3					Banatt, Agofle, Euccal, Eucmar Macrei, Thymul.	WL				
5	1	✓			B	2	✓	✓			3					Eucrud, mel, mixed shrbland.	F				
5	1 <sub>2</sub>										3						Sedge				
<del>2</del>	<del>6</del>				B	1	✓	✓			4	N/A	Aerial	Not visited.		Expect banksia woodland.	W/L				
2	7				B	1	✓	✓			4	N/A	Aerial	Not visited		Expect Melrha	WL				
2	8				B	1	✓	✓			5	N/A	Aerial	not visited		Expect Banksia woodland. questionable condition coz of dam.	W				

Summary/General Comments

R E M	RE M2	XM AP	LIN TYPE	L I N E A R	M L U	U N I T S	U P L A N D ?	W E T L A N D ?	V I S I T ?	DETAIL/ Area Name	VEG CON	Field date 200_	OBS From	YNOTASS	D E T V I S I O N R E Q D	COMMENTS	VEG STRUC/ DENS	FCT	DOMINANTS		
																			1	2	3
25	N			N	B	1	Y	N	N		good	2/6	edge	-	N		F		Euc marg	Bank atten	Kuz glab
26	N			N	B	1	Y	N	N		good	2/6	aerial	no access	N	same as 2-5					
27	N			N	B	1	Y	N	N		good	2/6	aerial	no access	N	same as 2-5					
28	N			N	B	1	Y	N	N		good	2/6	v distant	no access	N	same as 2-5					
29	N			N	B	1	Y	N	N		good	2/6	v distant	no access	N	same as 2-5					
61	N			N	B	2	N	Y	Y		good	2/6	distance	no access	N		F		mel rhaps?	mel teret	
62	N			N	B	1	N	Y						no access		Add 6-2 to be consistent with mapping of 6-1	F		Euc cal		
71	N			N	B	1	N	Y	N												
81	N			N	B	1	N	Y	N												
91	Y			N	B	1	N	Y	N												
24	Y			N	B	2	N	Y	Y		good	2/6	v. distant	no access	N	possibly mel lat Regen	W		Euc rud	mel rhaps	
															Y				Dead annual herbs		
51	Y			N	B	3	N	Y	Y		v good	2/6	distance	no access	N		F		Euc cal		
																			Euc rud	mel rhaps	
																			mel mixed probably mel rhaps, mel vim		
																			mel teret		

photo 1



SCP REMNANT VEGETATION MAPPING AND BASE CHARACTERISATION DATA SHEET  
 MAP SHEET 311 REC PRE-FIELD AR REC FIELD AR

Shrink column  
 ←

DoE 11/2005

Entered  
 13/11/05

REMNANT-PART NO	LINEAR	LINEAR TYPE	CROSSES MAP SHEET BOUNDARY (Y/N)	FIELD VISIT REQ YES/NO	FIELD DATE	LOCAT. OBSERV.	WETLAND VEG (Y/N)	SIM REM	DETAIL (Y/N)	VEGETATION CONDITION	VEGETATION/PREVIOUS INFO	FAUNA/HABITAT
1-1	2		Y									
2-1	2											
2-2	2											
2-3	2					distance					Euc marg, Euc cal same as 2-4	
2-4	2					edge				very good	Euc cal, Euc marg, kun glab, Bank ill,	
2-5	2					edge				excellent	Banks atten, Euc cal, Euc marg, Xilo ac, kun glab, Xan pri, Macro rid,	
3-1	2											
3-2	2		Y			edge				very good	Mal pha over sedges, Euc rudis	
3-3	2					distance				Degraded - Complete Deg.	Mal pha, Euc rudis,	
4-1	4	Road Res				edge				Good - Degraded	Agro flex, Euc cal, Xan pri, Bank att, Hib hyp, Hardenbergia, Banks Grand	
4-2	2		Y							very good	Bank att, Agro flex, Euc cal, Euc marg, Macro Rid, Thy mul	
4-3	2											
5-1	2										Euc rud, Mal mixed shrubland	
New Dataset												
<b>NOTES</b>												