

Ag



322/1-2 ↑

1-2 ↑

322/1-3 ↑

313

322

3-1

4-1

→4-1

322/1-2

1-1 ←

1-1 ←

1-2

1-4

3-2

4-2

1-5

4-4

312

1-6

314

1-8

2-1

1-7

1-11

1-10

1-9

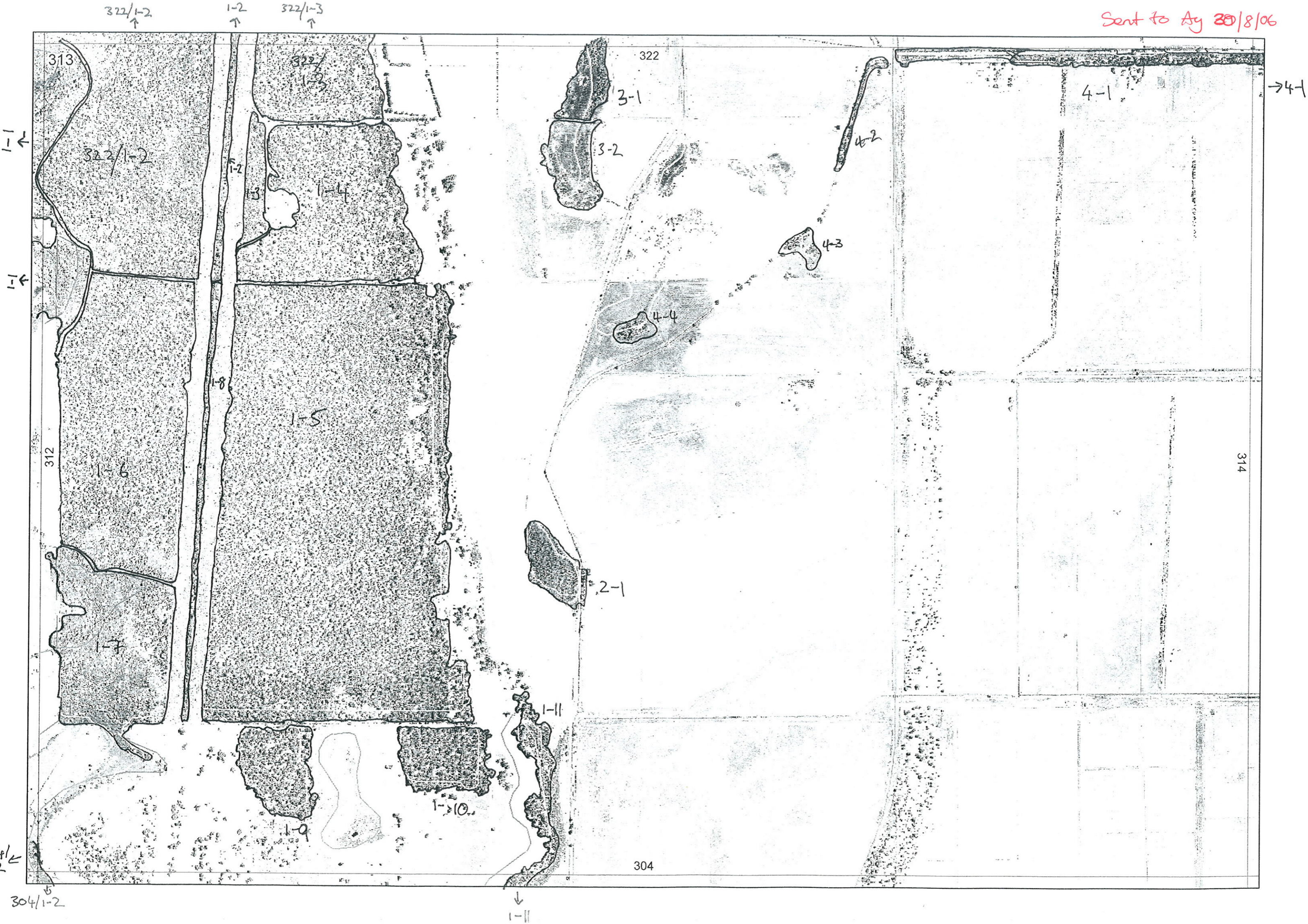
304

304/1-2 ←

304/1-2 ↓

1-11 ↓

Sent to Ag 20/8/06



322/1-2

1-2

322/1-3

313

322/1-3

322

3-1

4-1

322/1-2

1-2

3-2

4-2

1-1

1-3

1-4

4-3

1-1

4-4

312

1-8

1-5

1-6

2-1

314

1-7

1-11

304

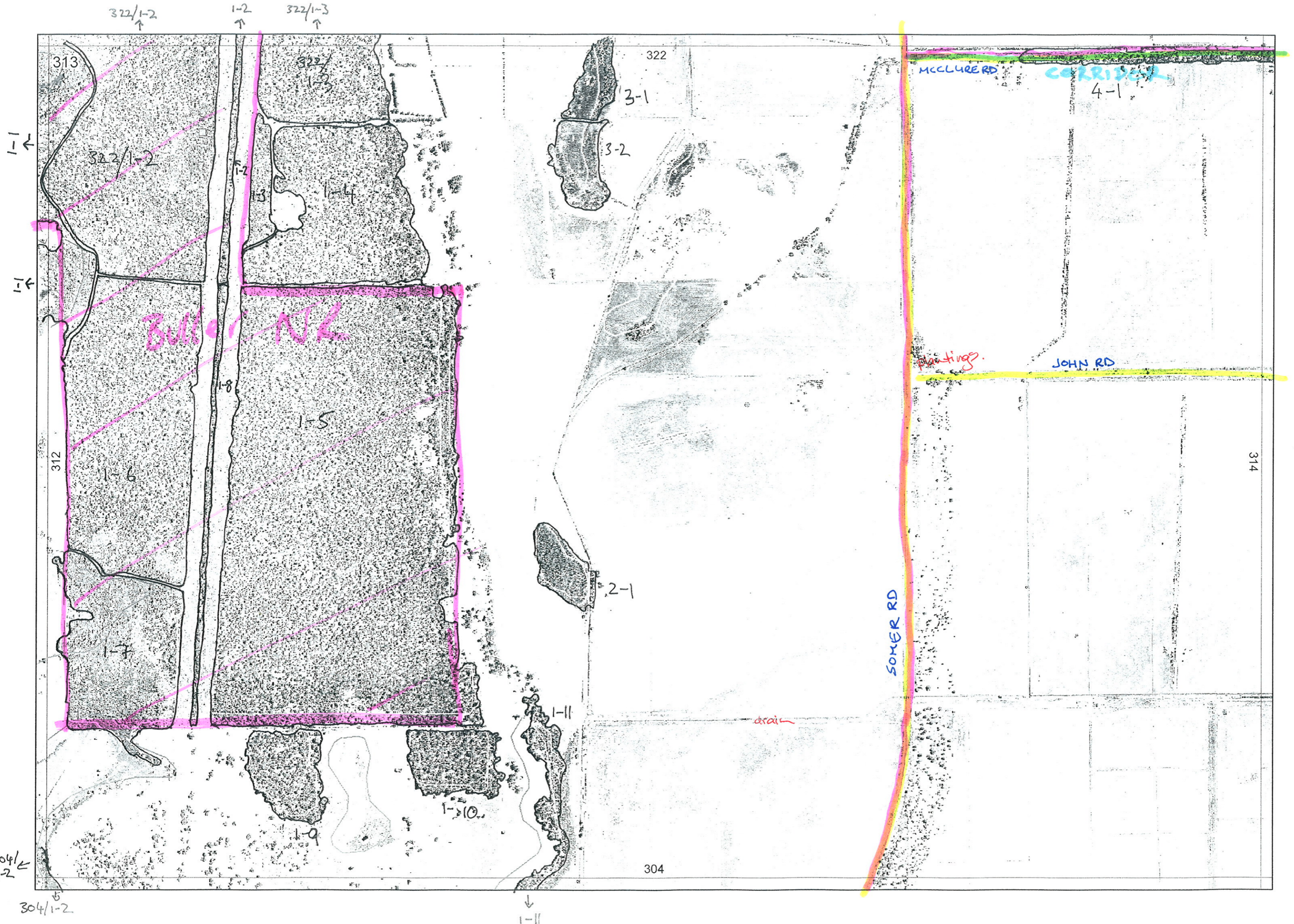
1-10

1-9

1-1

304/1-2

1-11



322/1-2
↑

1-2
↑

322/1-3
↑

313

322

MCCLURE RD

CORRIDOR

4-1

1-1
←

322/1-2

3-1

3-2

1-1
←

BULLOCK

plantings

JOHN RD

312

1-6

1-5

314

2-1

SOMER RD

1-7

drain

1-11

1-10

304

304/1-2
←

304/1-2
↓

1-11
↓

R E M	RE M2	XM AP	LIN TYPE	L I N E A R	M L U	U N I T S	U P L A N D ?	W E T L A N D ?	V I S I T ?	DETAIL/ Area Name	VEG CON	Field date 200_	OBS From	YNOTASS	D E T V I S R E Q D	COMMENTS	VEG STRU C/D ENS	FCT	DOMINANTS		
																			1	2	3
3	1	Y		N	P	1	N	Y	N		d-cd	2/6	aerial	no access	N	same as 3-2, Hak val					
4	1	N	channel	Y	P	3	N	Y	Y		g-d	2/6	edge	-	Y	SEE notebook has it been picked from 314?	W		mel osul	mel lateriflora	Ace pyr
																	F		Euc cal		
																	F		mel rhaph	Euc rudis	
3	2	N		N	P	1	N	Y	Y		d-cd	2/6	distance	no access	N		W		mel rhaph	mel rhaph	
4	2	N	channel	Y	P	1	N	Y	Y		d-cd	2/6	distance	no access	N		W		Euc rud	mel rhaph	
4	3	N		N	P	1	N	Y	Y		d-cd	2/6	distance	no access	N		W		mel rhaph	mel rhaph	
																			Euc rud		
4	4	N		N	P	1	N	Y	Y		d	2/6	aerial	no access	N	same as 3-2 willy wagtail.					

Summary/General Comments