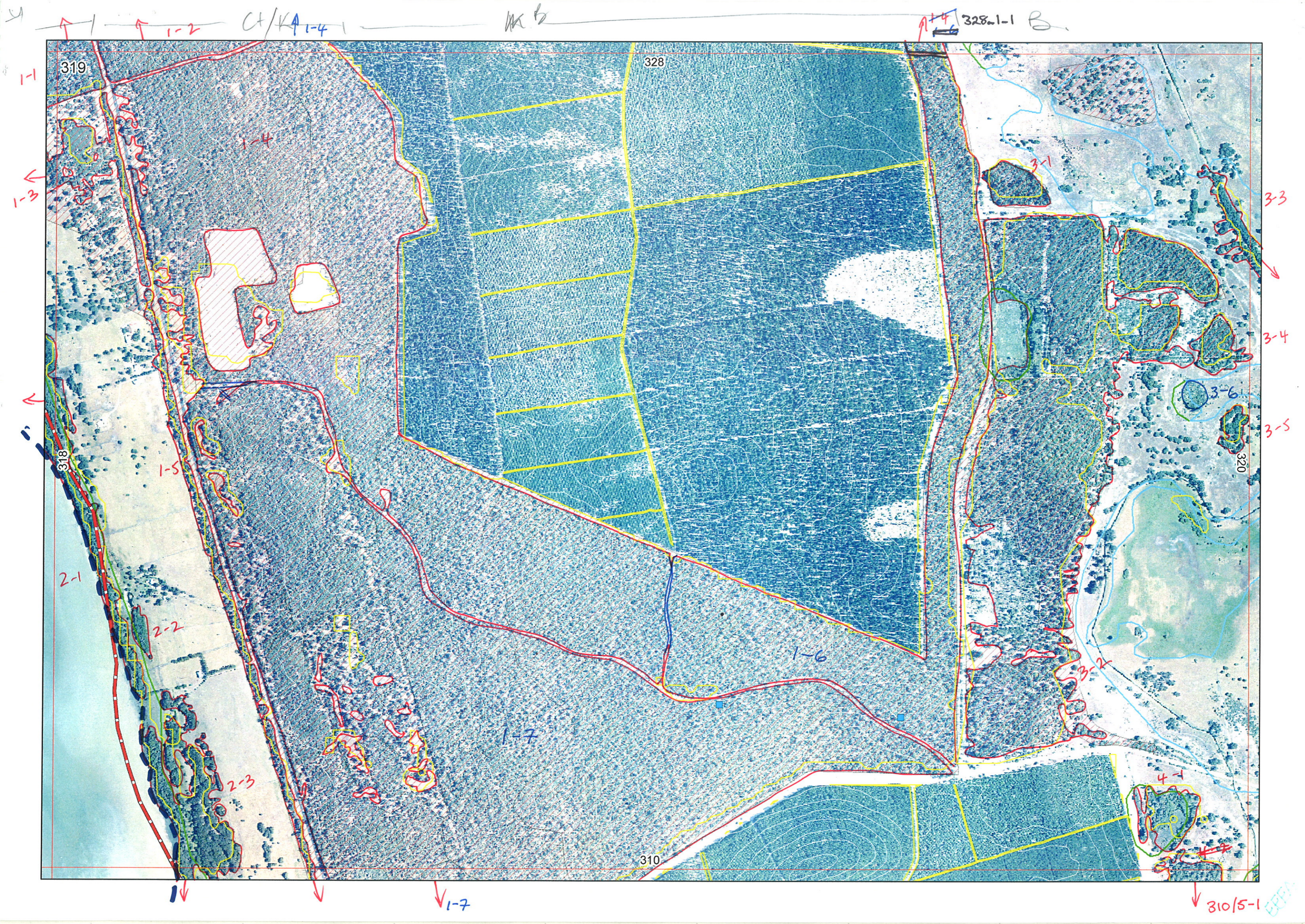
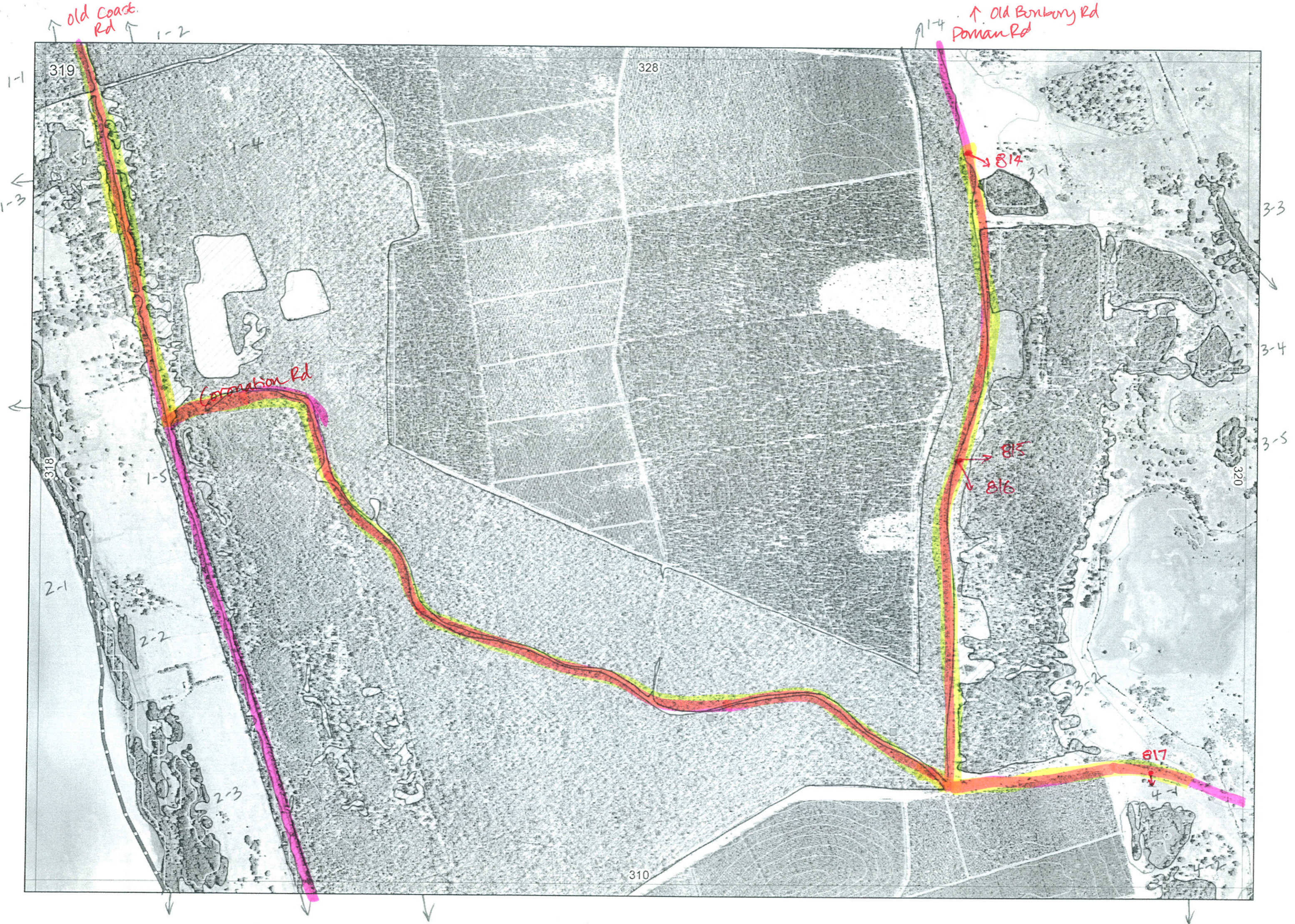




*





See A4 prv

R E M	RE M2	XM AP	LIN TYPE	L I N E A R	M L U	U N I T S	U P L A N D ?	W E T L A N D ?	V I S I T ?	DETAIL/ Area Name	VEG CON	Field date 2005	OBS From	YNOTASS	D E T V I S I O R E Q D	COMMENTS	VEG STRU C/ DENS	FCT	DOMINANTS		
																			1	2	3
*	1	1	✓		Y ₀	1	✓	✓		Yalgorup NP. CS4	-		-	NP.		Expect Eucgom	F				
*	1	2	✓		Ct/K	1	✓			Myalup SF	-		-	SF		Expect Eucgom	F				
*	1	3	✓		Y ₀	1	✓	✓			-		-			Expect Eucgom	F				
*	1	4	✓		Ct/K/B		✓			Myalup SF. see Coron. 01 Coron. 02	-		-	SF		Expect Eucgom + Banksia woodland/forest	F				
	1																F				
*	1	5	✓	Road	Y ₀	1	✓							Not Visited.		Expect Eucgom, eucmar	W				
	2	1	✓	F/shore	Y ₀	2		✓		Yalgorup NP CS4				NP.			F				
	2	2			Y ₀	1		✓						No Access			F				
	2	3	✓		Y ₀	3		✓						No Access		Tuarts.					
																Melaleucas					
																sedges.					
	3	1			B	2	✓	✓			G-D 4-3	7/12	Edge			Eucal, Eucmar, Banili, Xyloc, kunglar	F		Eucal	Eucmar	Banili
																Melrha	W		Melrha		
	3	2			B	4	✓	✓			VG-Ex 2-7	7/12	Edge	✓		Banatt, Eucmar, xyloc, acapul, Eucal, Bangra, Xanbru, Hibhy, Kunglar	F		Banatt	Eucmar	Eucal
																Melrha	W		Melrha		
																Similar to 1-4 which contains plots					
	3	3	✓	channel	B	1		✓						No Access.							
Photos 815 & 816																					

Summary/General Comments: Revisit 3-2.

Sheet Number 319

Pre Field Recorder(s) Burke

Field Recorder(s) Sall

Swan Bioplan Vegetation Mapping Data

R E M	R E M 2	X M A P	L I N E A R	L I N E A R	M L U	U N I T S	U P L A N D ?	W E T L A N D ?	V I S I T ?	D E T A I L / A r e a N a m e	V E G C O N	F i e l d d a t e	O B S F r o m	Y N O T A S S	D E T V I S I O N R E Q D	C O M M E N T S	V E G S T R U C / D E N S	F C T	D O M I N A N T S			
																			1	2	3	
3	4				B	1	✓							No Access.								
3	5				B	1	✓							No Access.		Expect melha.						
4	1				B	3	✓				VG? 3	7/12	Distance	-		Agoflex, Eucrud. Photo 817 melha ✓	W		Agoflex	Eucrud		
																melha ✓	W		Melha			
																Sedges?	S		Sedges			
4	2	✓			B	1	✓									See 310(S-1)						
3	6				B	1	X	✓			5.3?			No Access		Louis grazed.	shr.	?				
1	6																					
1	7																					

Summary/General Comments

SCP REMNANT VEGETATION MAPPING AND BASE CHARACTERISATION DATA SHEET
 MAP SHEET 319 REC PRE-FIELD Babat? REC FIELD SML

Entered 23/1/06 B-

DoE 11/2005

REMNANT-PART NO	LINEAR	LINEAR TYPE	CROSSES MAP SHEET BOUNDARY (Y/N)	FIELD VISIT REQ YES/NO	FIELD DATE	LOCAT. OBSERV.	WETLAND VEG (Y/N)	SIM REM	DETAIL (Y/N)	VEGETATION CONDITION	VEGETATION/PREVIOUS INFO	FAUNA/HABITAT
1-1	Z		Y									
1-2	Z		Y									
1-3	Z		Y									
1-4	Z		Y	? N plots								
1-5	Y	road res	Y									
2-1	Y	foreshore	Y									
2-2	Z		Z									
2-3	Z		Z									
3-1	Z		Z		7/12	road	Y					
3-2	Z		Z		7/12	road	Y	1st	N	G=D VA-EX	Kungla Eucal Melrha Eucalyptus Bahili Xyloc	
3-3	Z	channel	Z					1st	N		Kungla Banatt Eucalyptus Xyloc Acapul Eucal Bangra Xambo Hilibuy Melrha	
3-4	Z		Z									
3-5	Z		Z									
4-1	Z		Z		7/12	distance	Y		N	VA?	Apple Eucrod Melrha	
4-2	Z		Z									
NOTES												

Corrections to databased
version 16/5/06
by Karen Clarke

rptMapSht319

MA	RE	RE	XM	LINT	Line	ML	Unit	UP	WE	VIS	DETAIL	VE	date	OBS	YNOTAS	DE	COMMENT	Recorder	Reco
319	1	1	yes	no	estuar	M	1	yes	yes		Yalgorup NP	○	12/2006	aerial	BG			BG	
319	1	2	yes	no	S		1	yes	no		Myalup SF	○	12/2006	aerial	BG			BG	
319	1	3	yes	no	estuar	M	1	yes	no yes			○	12/2006	aerial	BG			BG	
319	1	4	yes	no	S		1 2	yes	no		Myalup SF	○	12/2006	aerial	BG		Myalup SF - plots CORON	BG	
319	1	5	yes	road	yes	S/B	1	yes	no			○	12/2006	aerial	BG			BG	
319	2	1	yes	foreshor	yes	estuar	M	2	no	yes	Yalgorup NP	○	12/2006	aerial	AW			BG	
319	2	2	no	no	no	estuar	M	1	no	yes		○	12/2006	aerial	AW			BG	
319	2	3	yes	no	no	estuar	M	3	yes	yes		○	12/2006	aerial	BG			BG	
319	3	1	no	no	no	B	2	yes	yes			4.3	2/2005	edge	na			BG	SM
319	3	2	no	no	no	B	4	yes	yes			2.7	2/2005	edge	na	not all coms seen		BG	SM
319	3	3	yes	channel	yes	B	1	no	yes			○	12/2006	aerial	AW	no access		BG	
319	3	4	no	no	no	B	1	yes	no			○	12/2006	aerial	AW	no access		BG	
319	3	5	no	no	no	B	1	no	yes			○	12/2006	aerial	AW	no access		BG	
319	4	1	no	no	no	B	3	no	yes			3	2/2005	distan	na			BG	SM
319	4	2	yes	yes	no	B	1	no	yes			○	na	na	see map 310	no access		BG	
319	3	6	no	no	no	B	1	yes	no			○	5.3	12/2006	aerial	BG	no access (no access, looks grazed/cleared)	BG	

need to ground truth

see 310/5-1

⊛ check GIS photo close-up to correct aerial interp.

Wednesday, 19 April 2006

Corrections Not entered yet 16/5/06
Ground truthing still needed for 319/1-1, 2, 3, 4, 5
319/2-1, 2, 3

Order VEGST FCT Unit1_D1 Unit1_D2 Unit1_D3 VEGST FCT Unit2_D1 Unit2_D2 Unit2_D3 VEGST FCT Unit3_D1 Unit3_D2 Unit3_D3

F	eucgom																
F	eucgom																
F	eucgom																
F	eucgom	bansp.															
F	eucgom																
W	melsp.	sedges			S		sedges										
W	melsp.																
W	eucgom				W		melsp.		S				sedges				
F	euccal	eucmar	banili		W		melrha										
F	banatt	eucmar	euccal		W		melrha										

W^WF
 (W) ?F ? (euccal) (eucmar) (banatt) expect tuant

W^WF
 melsp.

W	agofflex	eucrud			W		melrha		S				sedges				
---	----------	--------	--	--	---	--	--------	--	---	--	--	--	--------	--	--	--	--

~~(SH) ? (mixed) ?~~

Veg_description

euccal, eucmar, banili, xylocc, kungla

xylocc,acapul, euccal, bangra, Xanbru, hibhyp, ban