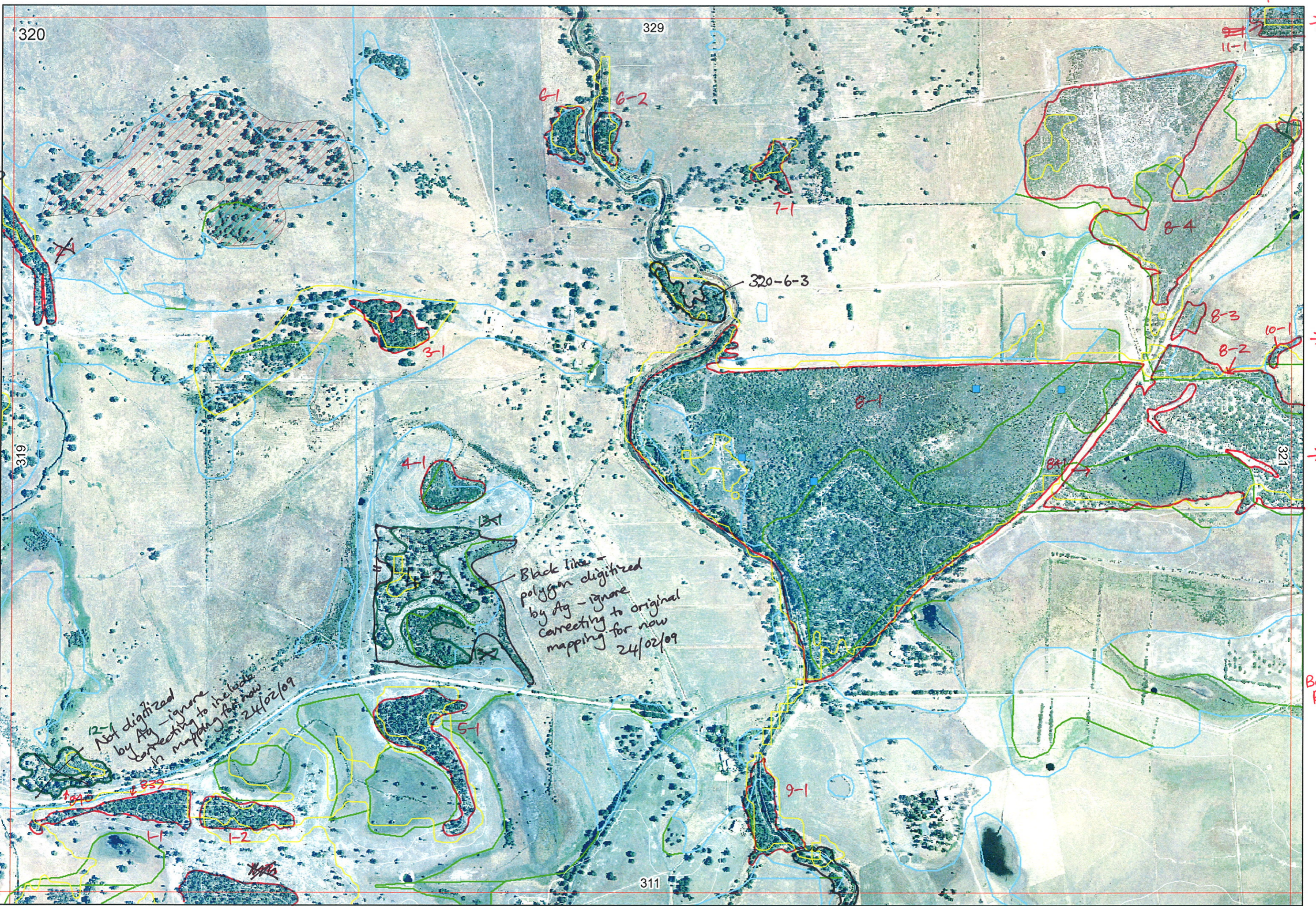




B



2/19/13-3

Peppermint Grove Rd

Not digitized by Ag - ignore connecting to the wide in mapping for now 24/02/09

Black lines - polygon digitized by Ag - ignore correcting to original mapping for now 24/02/09

Buller Rd

311-1-1

Peppermint Grove Rd

303/1-1

EEEA

320

329

319

311

321

↖

↑

→

→

→

↓

Peppermint Grove Rd

Buller Rd

Peppermint Grove Rd



SCP REMNANT VEGETATION MAPPING AND BASE CHARACTERISATION DATA SHEET
 MAP SHEET 320 REC PRE-FIELD SM REC FIELD

DoE 11/2005

REMNANT-PART NO	LINEAR	LINEAR TYPE	CROSSES MAP SHEET BOUNDARY (Y/N)	FIELD VISIT REQ YES/NO	FIELD DATE	LOCAT. OBSERV.	WETLAND VEG (Y/N)	SIM REM	DETAIL (Y/N)	VEGETATION CONDITION	VEGETATION/PREVIOUS INFO	FAUNA/HABITAT
1-1	N		N	Y	8/12/05	Edge	N			G-VG	Nuy Fol Ben Aili, Xan Pe, Agg Plot, E. Mar, Ban ATT, Kun Gla, Acc Pvc	Spudicubens Birds (lots)
1-2	N		Y	N	"	"	"			G	"	
1-3	N		Y	N								
2-1	Y	drain	Y	N								
3-1				N								
4-1				N								
5-1	N		N	Y	8/12	Edge	N			G	Ban ATT, Kun Gla, E. Mar, Xan Pe, Nuy Fol, Acc	
6-1				N								
6-2				N								
7-1				N								
8-1				plots/res								
9-1	Y	River	N	Y	8/12/05	Edge	Y			Better than dog	Set plots	
9-2	N	-	Y	Y	"	Edge	Y			1/9-5	E. Rud, Mal Rhyph.	
9-3	N	-	Y	Y	"	"	Y			G	E. Cal, E. Mar, Mal Rhyph, Mal Acc, Kun Gla, Acc Pvc, Nuy Fol, On Cra, Ban ATT.	
9-4	N	-	Y	Y	"	"	Y			G	Kun Gla, E. Cal, Xan Pe, zamin	
10-1	N	-	Y	Y	"	"	Y			G	Kun Gla, Xan Pe, Mal Rhyph, Mal Acc	E. Cal, E. Rud, E. Mar
11-1	N	-	Y	Y	8/12/05	Edge	Y			Better than D-Distance	Mal Rhyph, E. Cal, Kun Gla	
12-1	N	-	N	Y	8/12/05	Edge	Y			D-C/D	Mal Acc, Mal Rhyph, E. Cal, Mal Acc	Ring Neck, Magpie's
13-1	N	-	N	Y	"	"	Y			D	E. Cal, E. Mar, Kun Gla over Xan Pe	Conservation
13-2	N	-	N	Y	"	"	Y			D-G	Mal Rhyph, Kun Gla, Ad Fas, Xan Pe	50+ Flying Rabbits
New Dataset												
NOTES												

Entered 13/12/05

Map Sheet Number 320

Pre Field Recorder(s) Sall

Field Recorder(s) AR

Swan Bioplan Vegetation Mapping Data

R E M	RE M2	XM AP	LIN TYPE	L I N E A R	M L U	U N I T S	U P L A N D ?	W E T L A N D ?	V I S I T ?	DETAIL/ Area Name	VEG CON	Field date	OBS From	YNOTASS	D E T V I S R E Q D	COMMENTS	VEG STRUC/ DENS	FCT	DOMINANTS		
																			1	2	3
1	1				B	1	✓				3.7		Edge			Nuyflo, Banili, Eucmar, Banatt, Agoflo Xanpre, Kungla, Xylocc, Acapul	F				
1	2				B	1	✓				4		Edge			Nuyflo, Banili, Eucmar, Banatt, Agoflox, Xanpre, Kungla, Xylocc, Acapul	F				
1	3	✓			B								No Access			See map sheet 311 (1-1)	F				
2	1	✓	channel	✓	B	1	✓	✓					No Access				F	- aerial - Eucmar, Bamsp -			
3	1				B	1	✓						No Access			Expect Eucal. Eucmar	F				
4	1				B	2		✓					No Access				?				
4	2																				
42 = 13-1 x 13-2																					
5	1				B	1	✓				4		Edge			Banatt, Kungla, Eucmar, Xanspp Nuyflo, Xylocc	W				
6	1				B	1							No Access				W	- aerial Eucrud, Melsp			
6	2				B	1							No Access				W	- " " "			
7	1				B	1	✓						No Access				W	- " " "			
8	1				B	3+	✓	✓							Plots CS804 CS801 CS803 CS802 DRF4.		F				
	2																W				
	3																Sh				
	4																Sedge				
8	2	✓			B	3+	✓	✓			3.3		Edge	✓			W				
	2																Sh				
	3																Sedge				

Summary/General Comments

2

R E M	RE M2	XM AP	LIN TYPE	L I N E A R	M L U	U N I T S	U P L A N D ?	W E T L A N D ?	V I S I T ?	DETAIL/ Area Name	VEG CON	Field date 2005	OBS From	YNOTASS	D E T V I S I O N R E Q D	COMMENTS	VEG STRUC/ DENS	FCT	DOMINANTS		
																			1	2	3
8	3				B	1	✓	✓			4	8/12	Edge		Kungla, eucal, xanpre, macreī						
8	4				B	3 ⁺	✓	✓			4		Edge	✓	Kungla, xanpre, Eucal, Eucmar. melrha, melpre, Eucrud	F W					
																	Sh				
																	Sedg?				
9	1	✓	channel	✓	B	1		✓			4.7		Edge	✓	Eucrud, melrha.	F.					
10	1		channel	✓	B	1		✓					No Access		Expect same as 8-3						
11	1	✓			B	2	✓				4.7		Edge		Eucal, Kungla melrha	W W					
12	1				B	2	✓				5.3		Edge		Eucal Melrha, melpre,	W W			Delete - no digitized by Ag		
13	1				B	1	✓				5		Edge		Eucal, Eucmar, Kungla, Xanbru.	W			Combine 13-1 & 13-2 as digitized as one polygon labelled 4-2 by Ag		
13	2				B	1	✓				4.7		Edge		melrha, Kungla, Astfur, xanbru.	Sh.					
3			Combine 3-1		B	1	✓														
6	3				B	1	✓										Sh. W.				

Summary/General Comments