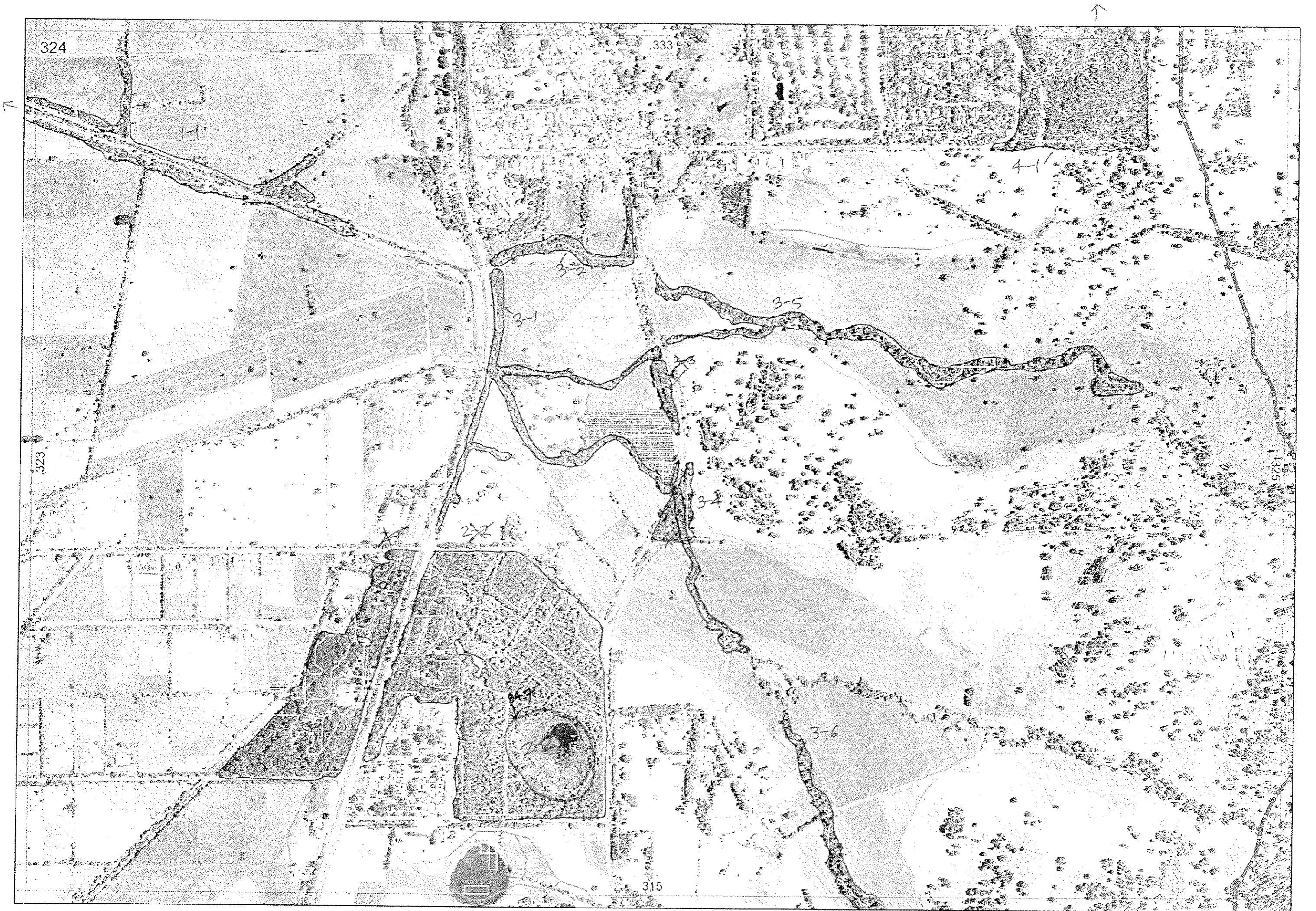


✓ 324

↙ this remnant crosses page so number it:
333-1-4





324

333

323

325

315

3-1

3-2

3-5

3-4

2-2

3-6

4-1

R E M	RE M2	XM AP	LIN TYPE	L I N E A R	M L U	U N I T S	U P L A N D ?	W E T L A N D ?	V I S I T ?	DETAIL/ Area Name	VEG CON	Field date	OBS From	YNOTASS	D E T V I S R E Q D	COMMENTS	VEG STRUC/ DENS	FCT	DOMINANTS		
																			1	2	3
1	1	✓	road channel	✓	PP	1		✓						No Access.							
2	2		channel		PP	2		✓		Hamel State Forest Plantation recently cleared	3		Edge			Bird nesting, water fowl habitat melha, Mellat, Eucrud, Eucmar	W				
3	1		Channel	✓	PP	1		✓			6		Edge								
3	2		Channel	✓	PP	1		✓													
3	4		Channel	✓	PP	1		✓			6		Edge			Eucrud, over dense weeds.					
3	5		Channel	✓	PP	1		✓								Expect same as 3-4					
3	6	✓	Channel	✓	PP	1		✓								Expect same as 3-4.					
4	1	✓			PP	1	✓														

Summary/General Comments
 part of remnant 333-1-4 crosses over so add new linework but no new data into database. Bec 28/2/06

SCP REMNANT VEGETATION MAPPING AND BASE CHARACTERISATION DATA SHEET
 MAP SHEET 32A REC PRE-FIELD SM1 REC FIELD _____

entered 13/12/05

DoE 11/2005

REMNANT-PART NO	LINEAR	LINEAR TYPE	CROSSES MAP SHEET BOUNDARY (Y/N)	FIELD VISIT REQ YES/NO	FIELD DATE	LOCAT. OBSERV.	WETLAND VEG (Y/N)	SIM REM	DETAIL (Y/N)	VEGETATION CONDITION	VEGETATION/PREVIOUS INFO	FAUNA/HABITAT
1-1	Y	channel	Y	Y/N								
2-1	N		N	ZNR	8/12/05		N				Planting + Nursery	
2-2	N		N	Sheet for plantings	2/12/05		Y				Mal Road	Bird extensive in wetland
3-1	Y	channel					Y			Majority - cleared	E Rd E Mar	valuable habitat
3-2	Y	"					Y					
3-3	Y	"			8/12/04		Y			CD	Mal Road	
3-4	Y	"					Y			CD	Marri over Wintonia, weeds, xantho	
3-5	Y	channel			TBD		Y			CD	E. Rudis over weeds	
3-6	Y	channel	Y				Y					
4-1	N		Y									
<i>see new datasheet</i>												
NOTES												