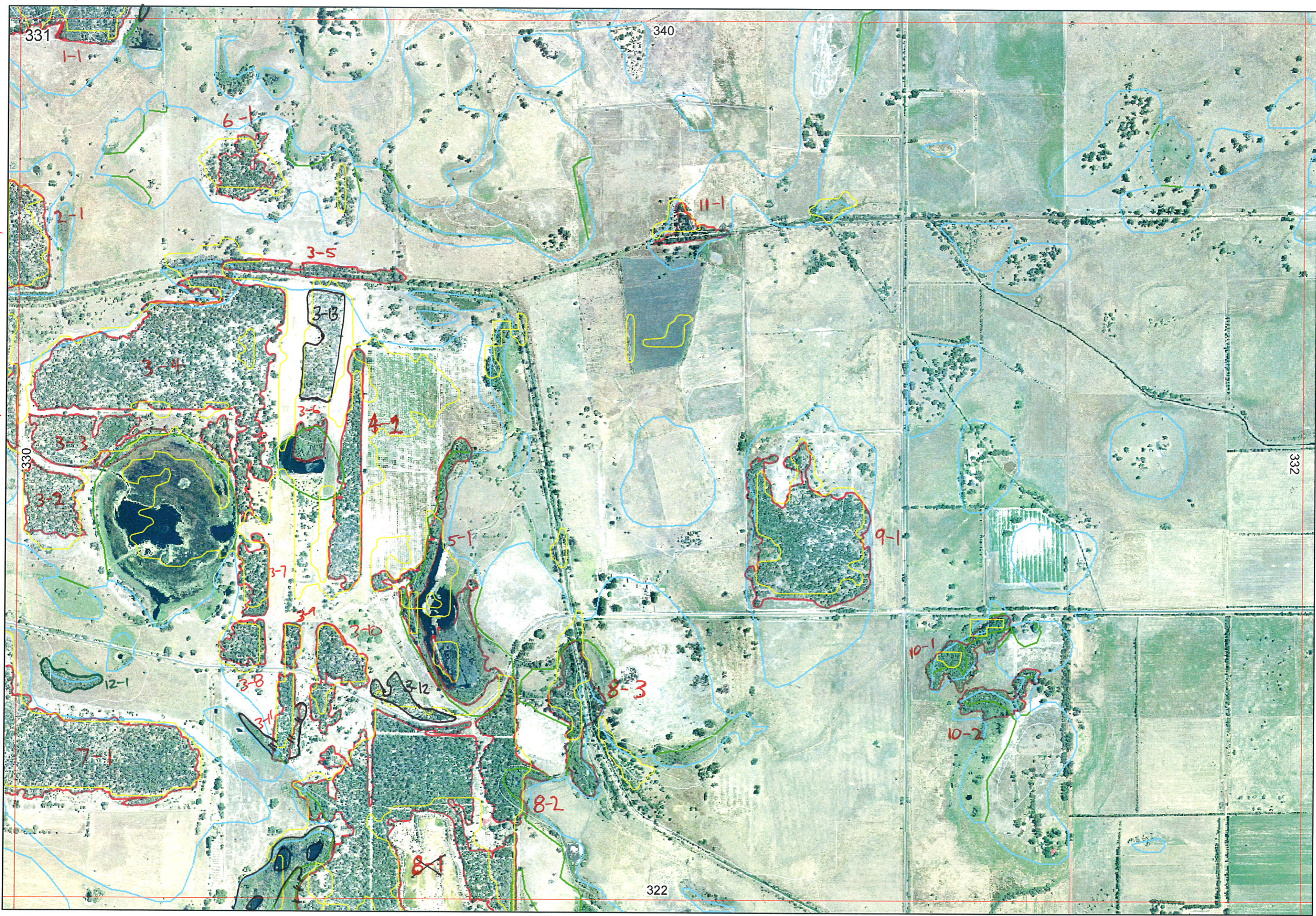


340-7/1



322/1-1

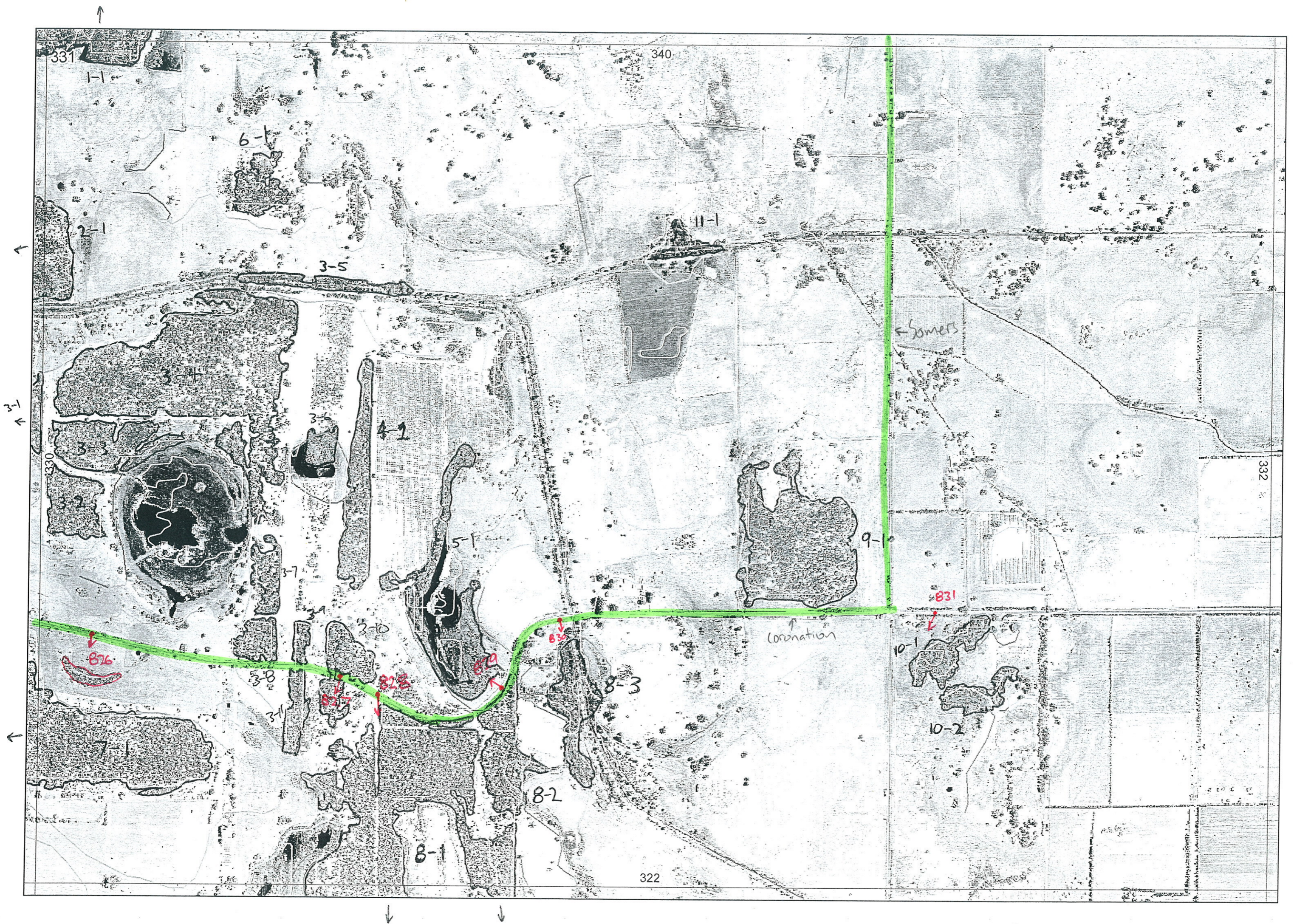
322/1-1

ECEA

✓ 331



\*



R E M	RE M2	XM AP	LIN TYPE	L I N E A R	M L U	U N I T S	U P L A N D ?	W E T L A N D ?	V I S I T ?	DETAIL/ Area Name	VEG CON	Field date	OBS From	YNOTASS	D E T V I S I O N	COMMENTS	VEG STRUC/ DENS	FCT	DOMINANTS		
																			1	2	3
1	1	✓			B	2	✓					7/12					W				
2	1	✓			B	1	✓										W				
3	1	✓			B	1	✓									Probably same as 3-10.	W				
3	2				B	1	✓									Probably same as 3-10	W				
3	3				B	2	✓	✓								Probably same as 3-10 + mel sp.	W				
3	4				B	1	✓									Probably same as 3-10.	W				
3	5		Road	✓	B	1	✓									Probably same as 3-10	W				
3	6				B	1		✓								Probably mel sp.	F				
3	7				B	1	✓									Probably same as 3-8	W				
3	8				B	1	✓				4-7	↑	Edge			Allfra, Banili, Eucmar, Kungla	W				
3	9				B	1					5	↑	Edge			Allfra, Banili	W				
3	10				B	1					4-3		Edge			Allfra, Eucmar, Banath, Hibhyp	W				
3	11			✓	B	1					4		Edge			Banath, Xylocc, Banili, Eucmar	W				
4	1			✓	B	2	✓	✓						Not visited		Probably same as 3-10.					
5	1		Channel	✓	B	2		✓			3		Edge			Wetland shrub mosaic, Astfqs, meliha, Melter					

Summary/General Comments

R E M	RE M2	XM AP	LIN TYPE	L I N E A R	M L U	U N I T S	U P L A N D ?	W E T L A N D ?	V I S I T ?	DETAIL/ Area Name	VEG CON	Field date	OBS From	YNOTASS	D E T V I S I O R E Q D	COMMENTS	VEG STRUC/ DENS	FCT	DOMINANTS			
																			1	2	3	
6	1				B	1	✓					7/12				Probably same as 3-10.						
7	1	✓			B	1	✓									Probably same as 3-10.						
8	1	✓			B	2	✓	✓			4		Edge			Banili, Banatt, Alljra, Eucmar Kungla, Acapul <i>w- Melsp.</i>						
8	2				B	2	✓	✓			43		Edge			<i>w</i> Eucmar, Alljra, Kungla, Xanpre <i>w- Melsp.</i>						
8	3		Channel	✓	B	2		✓			47		Edge			Melpre, Melrha, Eucal, Alljra over sedges + Arum Lillies						
9	1				B	2					43		Edge			Eucal, Kungla, Eucmar, Xanpre Banatt. <i>w- Melsp.</i>						
10	1				B	1					47		Edge			Everud, Melrha, Kungla, + Pinetree.						
10	2				B	1							No Access.			Probably same as 10-1						
11	1				B	1							No Access									
12	1				B	1		✓			47		Edge			Melpre, Kungla, Melrha.						
3	12				B	1			✓							Probably same as 3-10.						
3	13				B	1		✓								Probably same as 3-10 More degraded.						
3	14		channel	✓	B	1		✓														

Misnumbered originally  
Change/Delete <sup>now</sup> part  
of 322/1-1

Summary/General Comments

~~No Data~~  
19/1/06 BG.

REMNANT-PART NO	NON-LINEAR?	LINEAR PLUS	CROSSES MAP SHEET BOUNDARY (Y/N)	FIELD VISIT REQ YES/NO	FIELD DATE	LOCAT. OBSERV.	WETLAND VEG (Y/N)	SIM REM	DETAIL (Y/N)	VEGETATION CONDITION	VEGETATION/PREVIOUS INFO
1-1	✓		Y								
2-1	✓		Y								
3-1	✓		Y								
3-2	✓		Z								
3-3	✓		Z								
3-4	✓		Z								
3-5	✓	ROAD	Z								
3-6	✓		Z								
3-7	✓		Z								
3-8	✓		Z	Y	7/12	edge	Z		Z	D-G	Allfra Banili Eucmar Kongla
3-9	✓		Z	Y	7/12	edge	Z		Z	D	Allfra Banili
3-10	✓		Z				Z		Z	G-D	Allfra Eucmar Banatt Hibhyp
4-1	✓	channel	Z				Z		Z	G	Banatt Ylacc Banili Eucmar
5-1	✓		Z	Y	7/12	edge	Y		Z	?UG range of cond. Rms.	Wetland shrub mosaic - Astfas Melrha ?Melter
6-1	✓		Z								
7-1	✓		Y			done on MS 330					
8-1	✓		Y	Y	7/12	edge	Z		Z	G	Banili Banatt Allfra Eucmar Kongla Acapul
8-2	✓		Z	Y	7/12	edge	Z		Z	G-D	Eucmar Allfra Kongla Xampre
8-3	✓	dram	Z	Y	7/12	edge	Z		Z	<del>G-D</del> D-G	Melpre, Melrha, Arimililies, Eucal over Sedges, Allfra
9-1	✓		Z	Y	7/12	edge	Z		Z	G-D	Eucal Kongla Eucmar Xampre Banatt
10-1	✓		Z	Y	7/12	edge	Y		Z	Y-D	Eucrod Melrha Kongla Pine tree
10-2	✓		Z								
11-1	✓		Z								
12-1	✓		Z	Y	7/12	road	Y		Z	>D	Melpre Kongla Melrha

see new data sheet.

NOTES