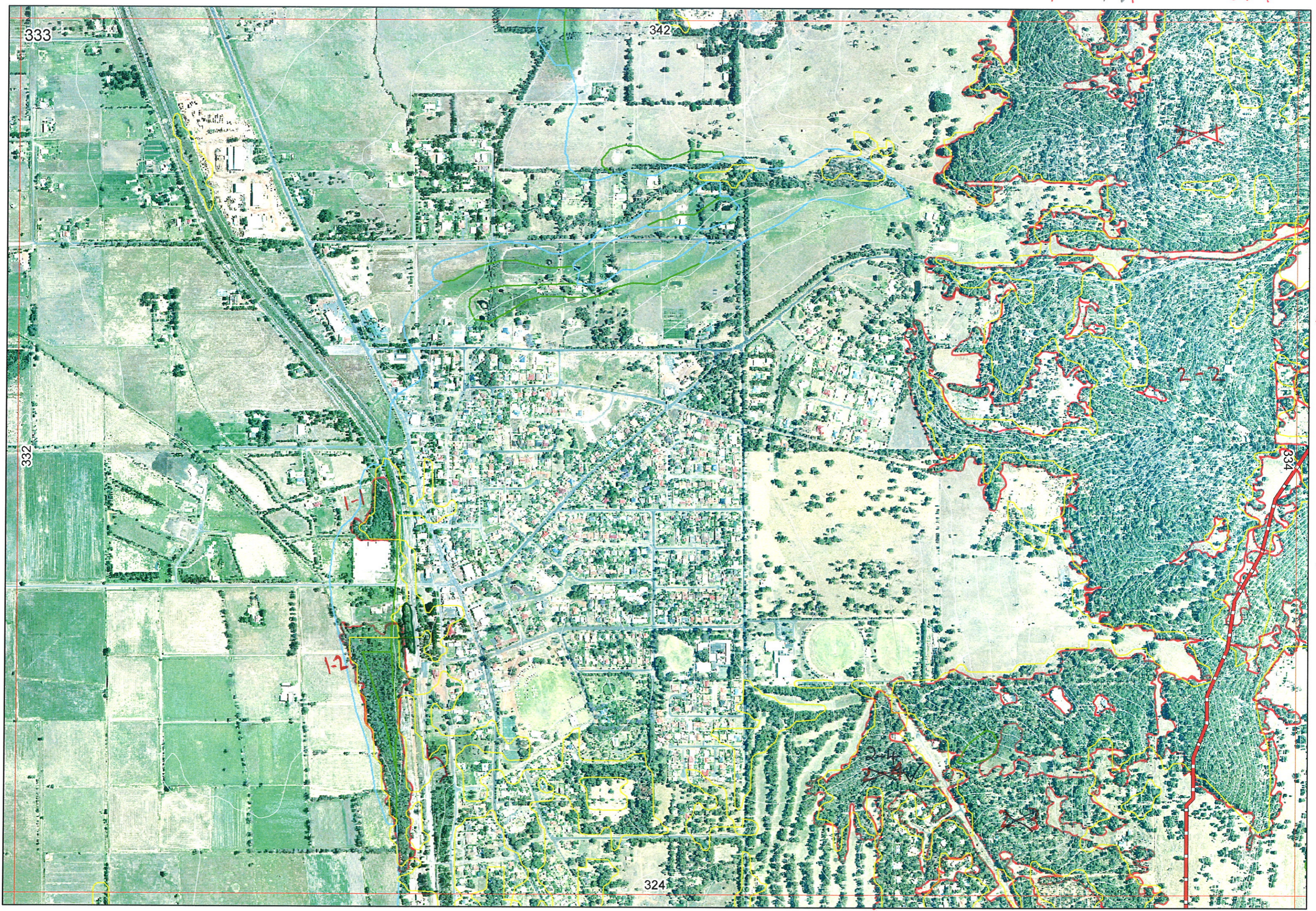


342/2-19 Ag 342/2-19 342/2-19



342/2-19 →

→

→

1-2

2-2

334

324

333

332

342

74 ↓

324-4-1 ↓

part EEEA.

2



333

342

3-1

3-2

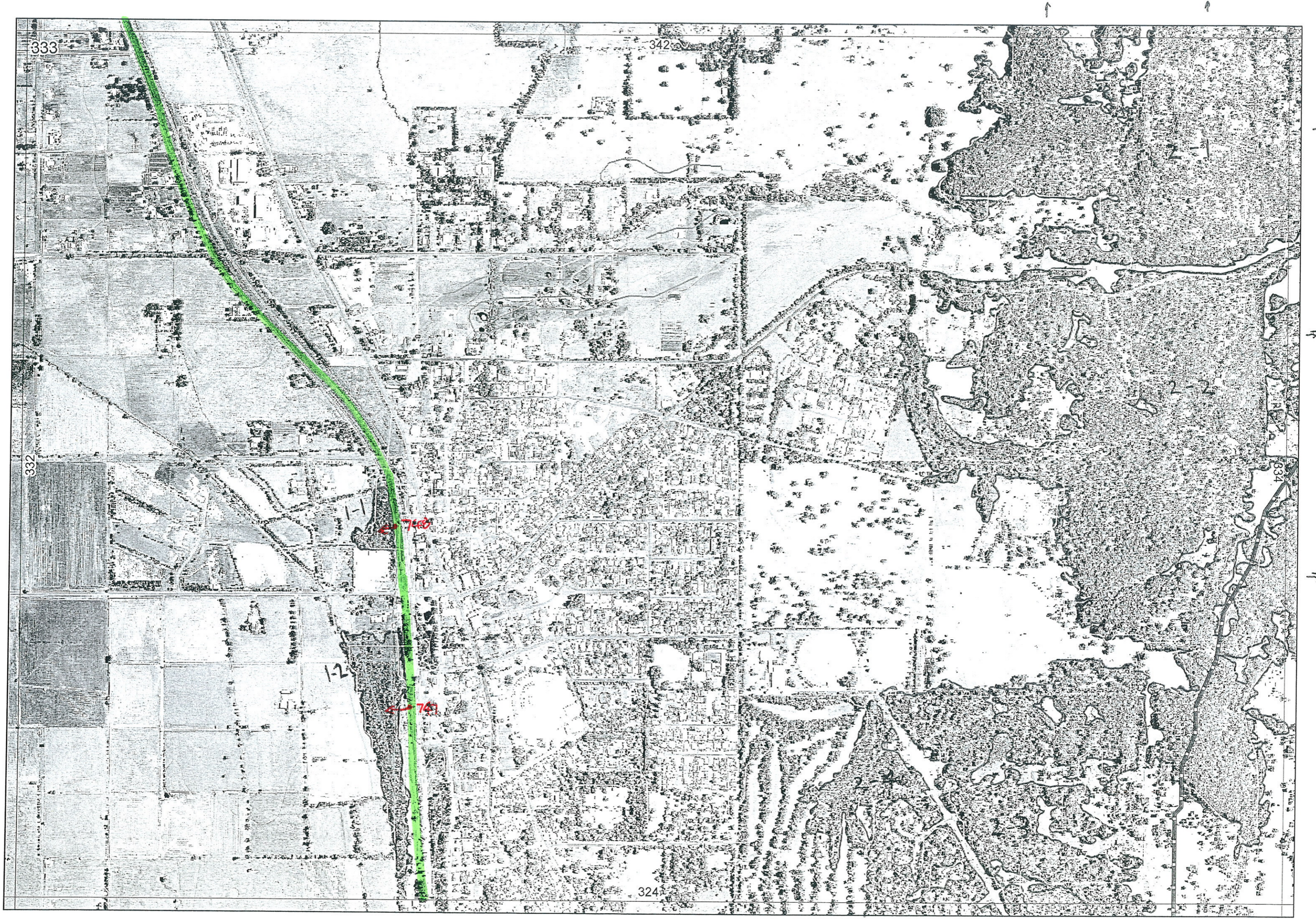
332

334

324

1-4

*



R E M	RE M2	XM AP	LIN TYPE	L I N E A R	M L U	U N I T S	U P L A N D ?	W E T L A N D ?	V I S I T ?	DETAIL/ Area Name	VEG CON	Field date	OBS From	YNOTASS	D E T V I S R E Q D	COMMENTS	VEG STRUC/ DENS	FCT	DOMINANTS		
																			1	2	3
1	1				PP	1		✓			2	24/11	Edge		Euclid, melba, Paxlin , Leptot	F					
1	2				PP	1		✓			2-7		Edge		Eucal, Euclid, Paxlin , Melpre, Pteesc, Sedges (Edge Weedy)	F					
2	1	✓			PP	1	✓								Changed to 342/2-19 by Karen 30/8/06	W					
2	2	✓			PP	1	✓														
2	3	✓			PP	1	✓														
2	4	✓			PP	1	✓														
NEW	1	3			PP	1	✓								Probably same as 1-2						
NEW	1	4	✓		PP	1	✓								Probably same as 1-2. (also mapped on map sheet 324)						
NEW	1	5			PP	1	✓								OK BUT more changes to E.						
NEW	3	1	Channel	✓	PP	1	✓														
NEW	3	2			PP	1	✓								May be plantings but Difficult to determine from aerial.						

out of
EEEA
area

Summary/General Comments See Dwellingup State Forest Information

Entered 24/1/06

REMNANT-PART NO	NON-LINEAR	LINEAR PLUS	CROSSES MAP SHEET BOUNDARY (Y/N)	FIELD VISIT REQ YES/NO	FIELD DATE	LOCAT. OBSERV.	WETLAND VEG (Y/N)	SIM REM	DETAIL (Y/N)	VEGETATION CONDITION	VEGETATION/PREVIOUS INFO
1-1	Y		N	Y	24/11/05	edge	Y			E	Euc rudis, Mel rhaph, Paragon lin, Lepido tetr
1-2	Y		N	Y	24/11/05	edge	Y			VG-E (edge weedy)	Euc cal, Euc rudis, Paragonis lin, Mel preis, Pterid esc, Sedges
2-1	Y		Y								
2-2	Y		Y								
2-3	Y		Y								
2-4	Y		Y								
See New Datasheet											
NOTES											