

Barb

1-1 Uo

2-1

2-2

3-1 CT

K.

3-17

3-16

336

845

3-15

To become 327/1-1 when crosswalks cleared

3-18

3-19

3-20

335

337

• appears that wrong datasheet attached to aerial mapsheet
 • duplicated
 • only 1 mapsheet digitised by Ag - mapsheet A. These remnants match polygon No's of datasheet A (SM, Barb)
 • but seems Bronwen added notes/data to datasheet B
 ↳ do we need to transcribe onto datasheet A corresponding polygon.

327

2-5

2-1

2-3

2-4

This version digitised by Ag (BR 29/5/07) EEEA

Yalgoup NP.



336

2-1345

337

327

Yalgoup NP.

Lake Clifton

Lake Pollard.

OLD DUNDEE

LYALUP STATE FOREST

327/2-2

1-1

13-1

35/2-4

2-9

4-1

1-1

337/1-1

337/1-1

337/1-4

328/1-1

327/2-2

327/2-2

2-3

CA 328/1-1

R E M	R E M 2	X M A P	L I N E T Y P E	L I N E A R	M L U	U N I T S	U P L A N D ?	W E T L A N D ?	V I S I T ?	D E T A I L / A r e a N a m e	V E G C O N	F i e l d d a t e 200_	O B S F r o m	Y N O T A S S	D E T V I S I O N R E Q D	C O M M E N T S	V E G S T R U C / D E N S	F C T	D O M I N A N T S		
																			1	2	3
3	8				G	1	✓			as per plots in 3-21	53		Edge			Agofle, Eucgom					
3	9				G	1	✓			"	53		Edge			Agofle					
3	10				G	1	✓			"	53		Edge			Agofle, Eucgom					
3	11				G	1	✓			"	53		Edge			Agofle, Eucgom, Eucmar, Aca pul					
3	12				G	1	✓			"			Edge								
3	13				K	1	✓			see plot CLIFT 01	53		Edge			Eucgom, Eucmar, Bangra, Agofle, Allfra					
3	14				K	1	✓			"	53					Eucmar, Eucgom, Agofle					
3	15	✓			K	1	✓			"	53		Edge			Xylocc, Allfra, Banatt, Banili					
3	16	✓			K	1	✓			"	5		Edge			Banatt, Eucal, Allfra, Xample, Nuyflo					
3	17	✓			K	1	✓			"	53		Edge			Eucmar, Eucgom, Banatt, Allfra, Xylocc, parkland cleared					
3	18	✓			K	1	✓			"											
3	19	✓			K	1	✓			"											
3	20	✓			K	1	✓			"											
3	21	✓			G/K	3	✓			plots CLIFT 01-03, part MyalupSF											

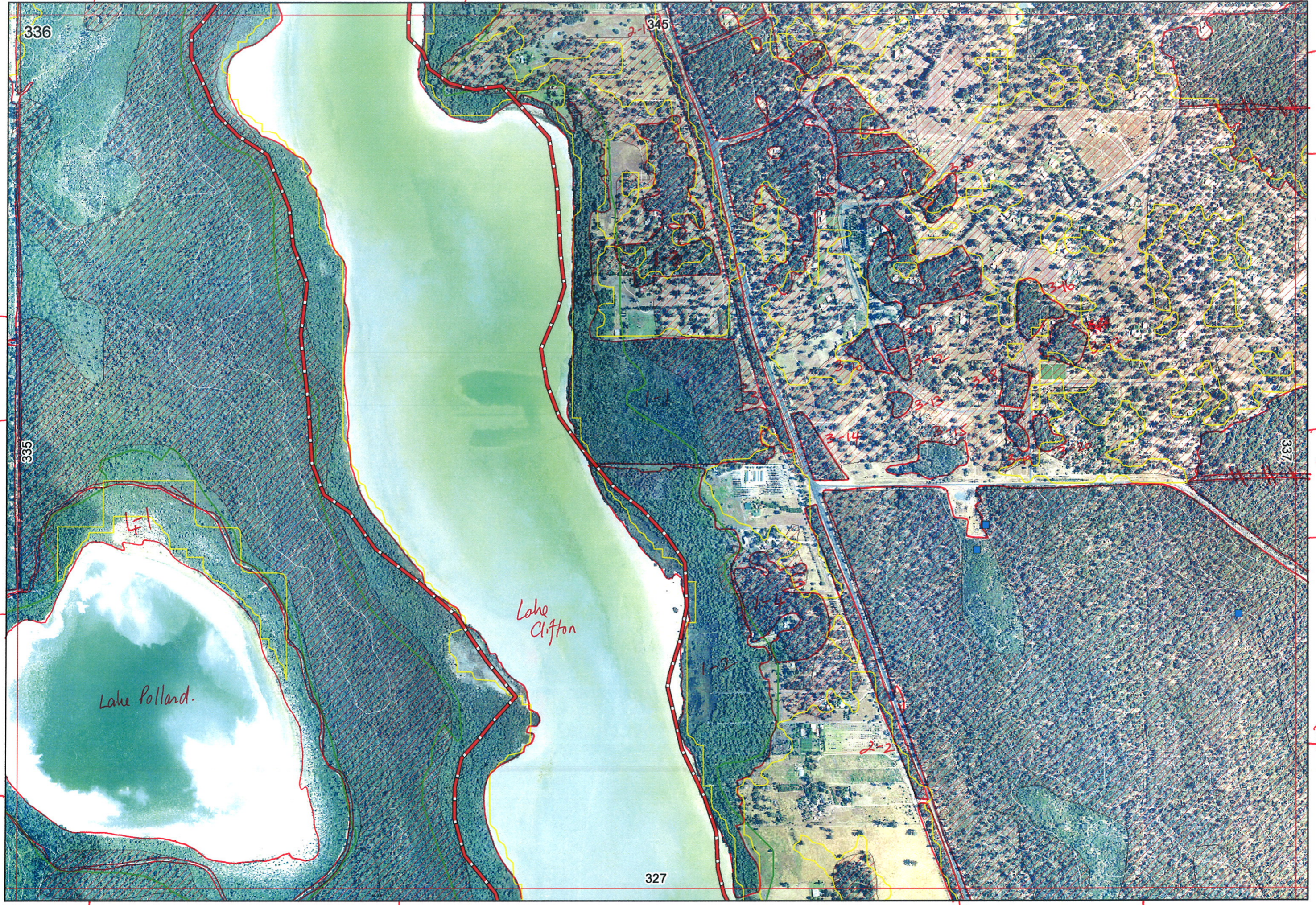
Summary/General Comments

Sally

327/2-2

3-1

3-1



337/1-1

337/1-1

335/2-4

335/2-9

337/1-1

4-1

4-1

D

327/2-2

1

327/2-2

1

1

2-3

ct.

328/1-1

328/1-1

Oranges route taken 7/12/05

1-1

2-1

2-2

3-1

336

345

810

813

809

808

811

812

335

337

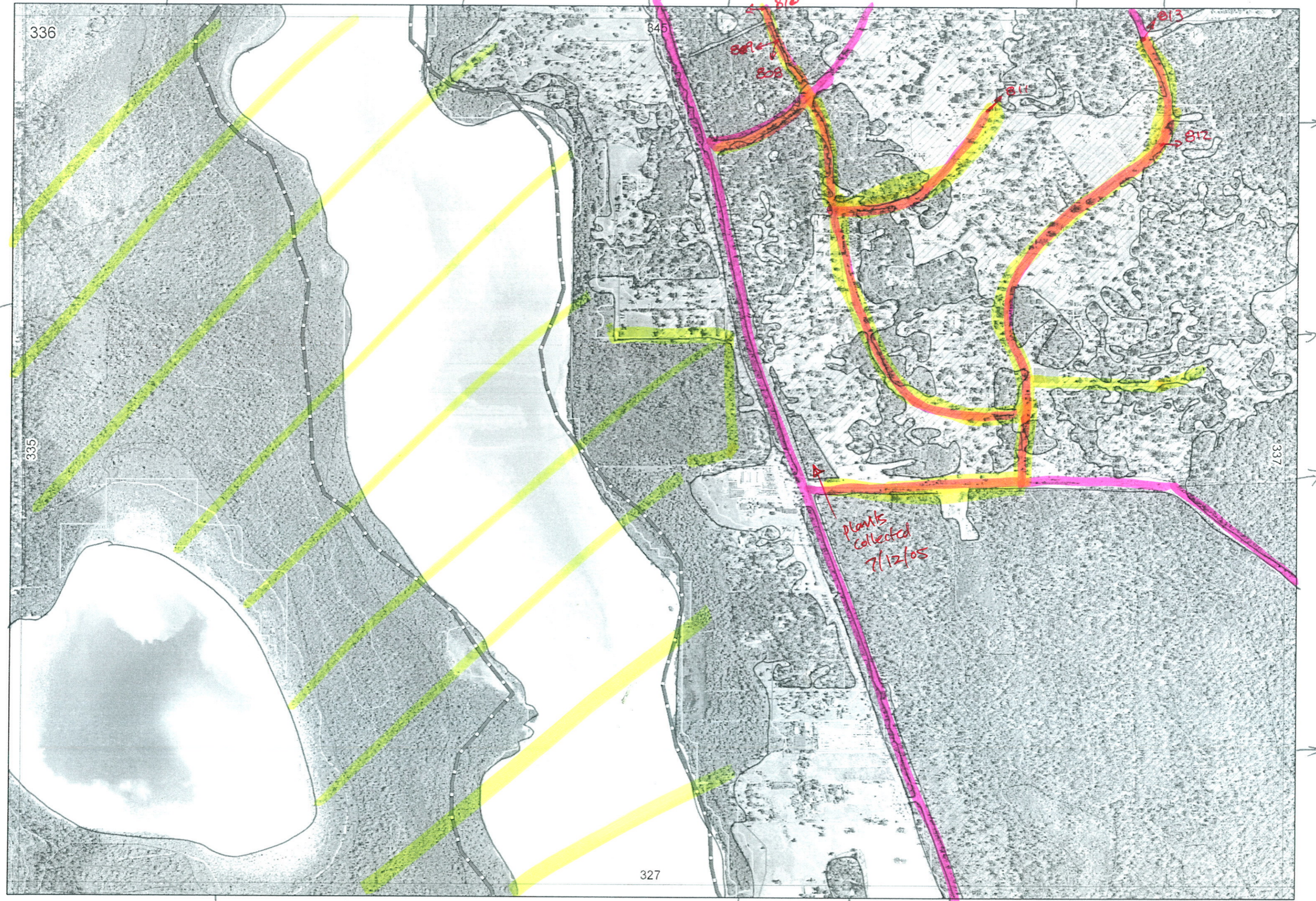
plants collected 7/12/05

327

2-1

2-3

2-4



Entered
27/1/06.

SCP REMNANT VEGETATION MAPPING AND BASE CHARACTERISATION DATA SHEET
 MAP SHEET 336 REC PRE-FIELD SM REC FIELD SM

DoE 11/2005

REMNANT-PART NO	LINEAR	LINEAR TYPE	CROSSES MAP SHEET BOUNDARY (Y/N)	FIELD VISIT REQ YES/NO	FIELD DATE	LOCAT. OBSERV.	WETLAND VEG (Y/N)	SIM REM	DETAIL (Y/N)	VEGETATION CONDITION	VEGETATION/PREVIOUS INFO	FAUNA/HABITAT
1-1			Y									
2-1			Y									
2-2	Y	road res	Y									
2-3	N		Y									
2-4	Y	road res	Y									
2-5	Y	"	Y									
3-1	N		Y		7/02	road edge	N		N	D-CD	Agoffe Eucgorn wildcats, redt gs Jasfur > Acacia truncata, some plantings	
3-2			Y			" "	N		N	"		
3-3							N		N	"		
3-4							N		N			
3-5							N		N	D-CD	Eucgorn Agoffe Acaros	
3-6							N		N	D-CD	Agoffe Eucgorn	
3-7						road edge	N		N	D-CD	Agoffe, Eucgorn	
3-8							N		N	D-CD	"	
3-9						road edge	N		N	D-CD	Agoffe	
3-10						road "	N		N	D-CD	Agoffe, Eucgorn	
3-11							N		N	D-CD	" Eucmor Acapul	
3-12							N		N	D-CD	Agoffe, Eucgorn	
3-13							N		N	D-CD	Eucgorn Eucmor Banora Agoffe Allfra	
3-14						road "	N		N	D-CD	Eucmor Eucgorn Agoffe	kookaburras
3-15			Y			road "	N		N	D-CD	Xylocc Allfra Benatt Baniti	ravens
3-16			Y			road "	N		N	D-CD	Banatt Eucal Allfra Xampre Nuyflo	
3-17			Y			road "	N		N	D-CD	Eucmor, Eucgorn, parkland cleared	Banatt Allfra Xylocc
3-18			Y									
3-19			Y									
3-21			Y	N-plots								
3-20			Y									

See New Data sheet

NOTES

1

Map Sheet Number 336

Pre Field Recorder(s) Bob

Field Recorder(s)

Swan Bioplan Vegetation Mapping Data

Do skip only Use??

R E M	RE M2	XM AP	LIN TYPE	L I N E A R	M L U	U N I T S	U P L A N D ?	W E T L A N D ?	V I S I T ?	DETAIL/ Area Name	VEG CON	Field date 200_	OBS From	YNOTASS	D E T V I S I O N R E Q D	COMMENTS	VEG STRUC/ DENS	FCT	DOMINANTS			
																			1	2	3	
1	1	✓	Fl/shore	B	M	3		✓		Lake Clifton Yalgoo NP	2	-	Aerial Int	No Access								
1	2	✓	Fl/shore	B	M	4 ⁺	✓	✓		Lake Clifton Yalgoo NP	2.7	-	"	"								
1	3				M	1				Adjacent Yalgoo NP Near Coast Road.	5	-	Aerial Int.	No Access.		Grazed & fragmented.	W			Evergreen		
1	4				M	1				"	5	-	"	"		"	W			Evergreen.		
2	1			✓	M	1		✓														
2	2		Road	✓	M	1	✓	✓		"												
2	3	✓	Road	✓	M	1		✓		"												
3	1	✓			S	1		✓		On old Coast Rd.												
3	2				S	1		✓		"												
3	3				S	1				"												
3	4				S	1				On old Coast Rd.												
3	5				S	1																
3	6				S	1																
3	7				S	1																
3	8				S	1																

*Interpret condition from assessment of 3-1 & 3-2 ERASE THIS

Summary/General Comments

BD

Desktop or to use??

R E M	RE M2	XM AP	LIN TYPE	L I N E A R	M L U	U N I T S	U P L A N D ?	W E T L A N D ?	V I S I T ?	DETAIL/ Area Name	VEG CON	Field date 200_	OBS From	YNOTASS	D E T V I S I O N R E Q D	COMMENTS	VEG STRUC/ DENS	FCT	DOMINANTS				
																			1	2	3		
3	9				S	1	✓									*Interpret condition from assessment of 3-1 + 3-2 ERASE THIS							
3	10				S	1	✓									*	"						
3	11				S	1	✓									*	"						
3	12				S	1	✓									*	"						
3	13				S	1	✓									*	"						
3	14				S	1	✓		✓	On old Coast Rd.													
3	15				S	1	✓									*	"						
3	16				S	1	✓									*	"						
3	17				S	1	✓									*							
3	18				S	1	✓									*							
3	19				S	1	✓									*							
3	20				S	1	✓									*							
4	1	✓	f/shore	✓	M	4	✓			Yalgoo NP Lake Pollard	1.7	-	Aerial Int.	NO ACCESS									

rptMapSht336

Not
frustrated
yet

MA	RE	RE	XM	LINT	Line	ML	Unit	UP	WE	VIS	DETAIL	VE	date	OBS	YNOTAS	DE	COMMENT	Recorder	Reco
336	1	1	yes	no	na	M(%)		yes	yes	no	Yalgorup NP							SM	SM
336	2	1	yes	"	"	M(%)S		yes	yes	yes	Part Yalgorup NP							SM	SM
336	2	2	yes	road	yes	S		yes	no	yes	no							SM	SM
336	2	3	yes	no	na	M(%)		no	yes									SM	SM
336	2	4	yes	road	yes	S		yes	no									SM	SM
336	2	5		road	yes	S		yes	no									SM	SM
336	3	1	yes	no	na	S		yes	no	yes	no	5.3	7/2 2/2005	edge	na	N	Photo 810, Jactor, Acarus, Avebar, Enr	SM	SM
336	3	2	yes	no	na	S		yes	no	yes	no	5.3	2/2005	edge			Photo 808, 809	SM	SM
336	3	3										5.3	2/2005	edge			na	SM	SM
336	3	4										5.3	2/2005	edge				SM	SM
336	3	5										5.3	2/2005	edge			Acaros	SM	SM
336	3	6																SM	SM
336	3	7										5.3	2/2005	edge				SM	SM
336	3	8																SM	SM
336	3	9										5.3	2/2005	edge				SM	SM
336	3	10										5.3	2/2005	edge				SM	SM
336	3	11										5.3	2/2005	edge			Acapul	SM	SM
336	3	12																SM	SM

Order VEGST FCT Unit1_D1 Unit1_D2 Unit1_D3 VEGST FCT Unit2_D1 Unit2_D2 Unit2_D3 VEGST FCT Unit3_D1 Unit3_D2 Unit3_D3

3-1	F	Eucgom	Agofle	
2		"	"	
3		"	"	
4		"	"	
5		Eucgom	Agofle	
6		Eucgom	Agofle	
7		Eucgom	Agofle	
8		Eucgom	Agofle	
9		Agofle	-	
10		Eucgom	Agofle	
11		Eucgom	Eucmar	Agofle
12	V	Eucgom	Eucmar	Agofle

Veg. description

agofle, eucgom, wild oats, veldt grass

|| agofle, eucgom, jacfur, acacia truncata

some plantings

|| eucgom, agofle, jacfur, acacia-truncata

|| eucgom, agofle, jacfur, acacia-truncata

eucgom, agofle, acaros

agofle, eucgom

agofle, eucgom

agofle, eucgom

agofle

agofle, eucgom

agofle, eucgom, eucmar, acapul

MA	RE	RE	XM	LINT	Line	ML	Unit	UP	WE	VIS	DETAIL	VE	l date	OBS	YNOTAS	DE	COMMENT	Recorder	Reco
336	3	13	no	no	na	S	1	yes	no	yes	no	5.3	2/2005	edge	na	N	Bangra, Allfra	SM	SM
336	3	14	no	no	na	S	1	yes	no	yes	no	5.3	2/2005	edge			na	SM	SM
336	3	15	yes									5.3	2/2005	edge			Photo 812, Xylace	SM	SM
336	3	16	yes									5.3	2/2005	edge			Photo 813, Xylace	SM, Nyctflo	SM
336	3	17	yes									5.3	2/2005	edge			Photo 811, Allfra	SM, Xylace, SM	SM
336	3	18	yes				1					S-3	na	aerial	notime	N	na	SM	SM
336	3	19	yes				1					S-3			"	N	na	SM	SM
336	3	21	yes				4			no	plots - xxx	?	na	?	detail	?		SM	SM
336	3	20	yes				1			yes	no	D-G			notime	?		SM	SM

Old? =
townsite
(contains
plots)

Summary - visit 3-21 in detail?
ground truth 3-20 (not just aerial)

order VEGST FCT Unit1_D1 Unit1_D2 Unit1_D3 VEGST FCT Unit2_D1 Unit2_D2 Unit2_D3 VEGST FCT Unit3_D1 Unit3_D2 Unit3_D3

3-13	F	Eucgom	Eucmar	Agofle
14	F	Eucgom	Eucmar	Agofle
15	F	Banatt	Allfra	Banili
16	F	Euccal	Banatt	Allfra
17	F	Eucgom	Eucmar	Banatt
18	F	Eucgom	Eucmar	Banatt
19	F	Eucgom	Eucmar	Banatt
detur? 21				
20	F	Eucgom	Eucmar	Banatt

Veg_description

eucgom, eucmar, bangra, agofle, allfra

eucmar, eucgom, agofle

xylocc, allfra, banatt, banili

banatt, euccal, allfra, xanpre, nuyflo

eucmar, eucgom, parkland cleared, banatt, allfra, xylocc.