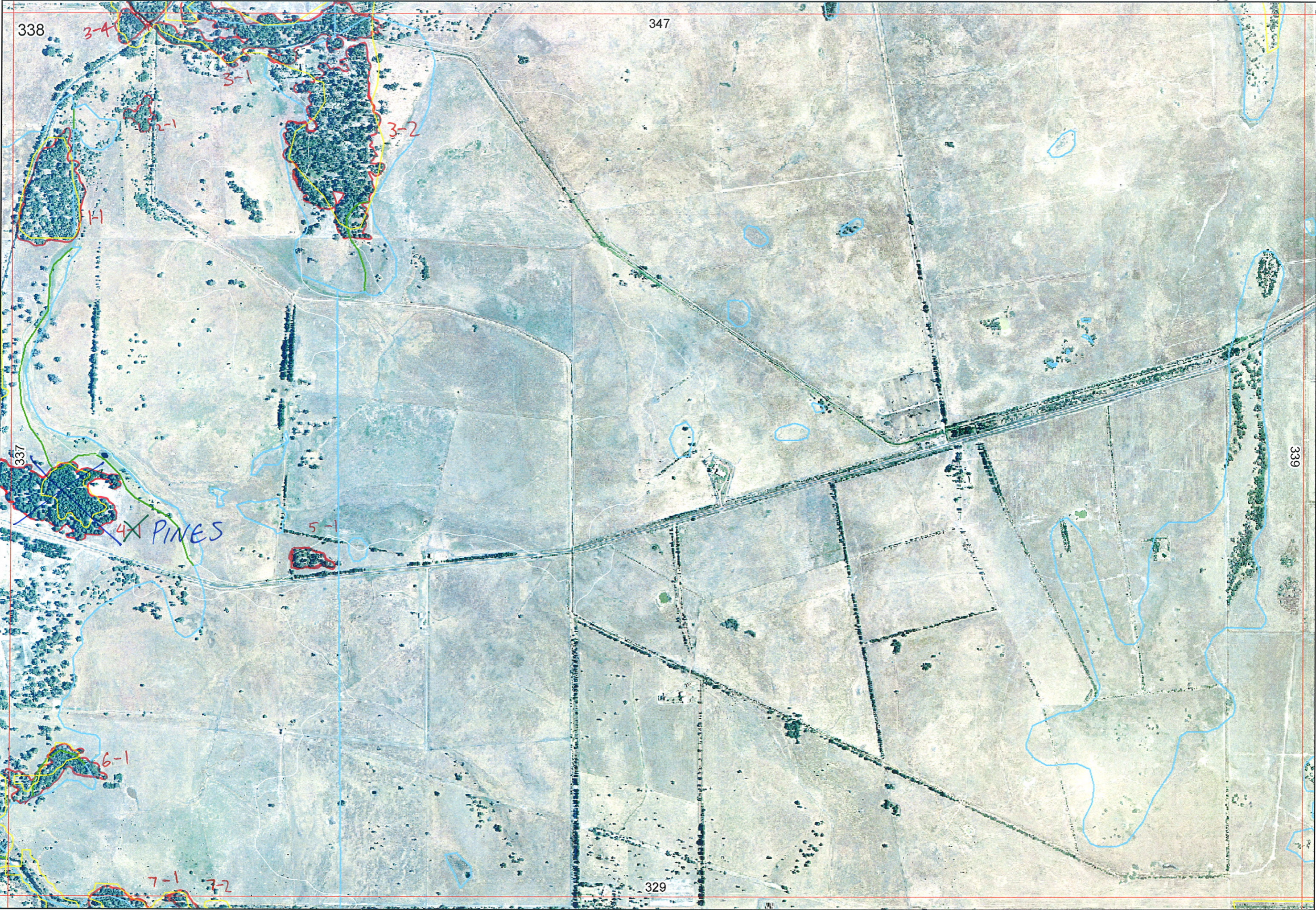


34713-2

Ag ✓



338

347

337

339

329



EEEA

2 ✓



338

347

339

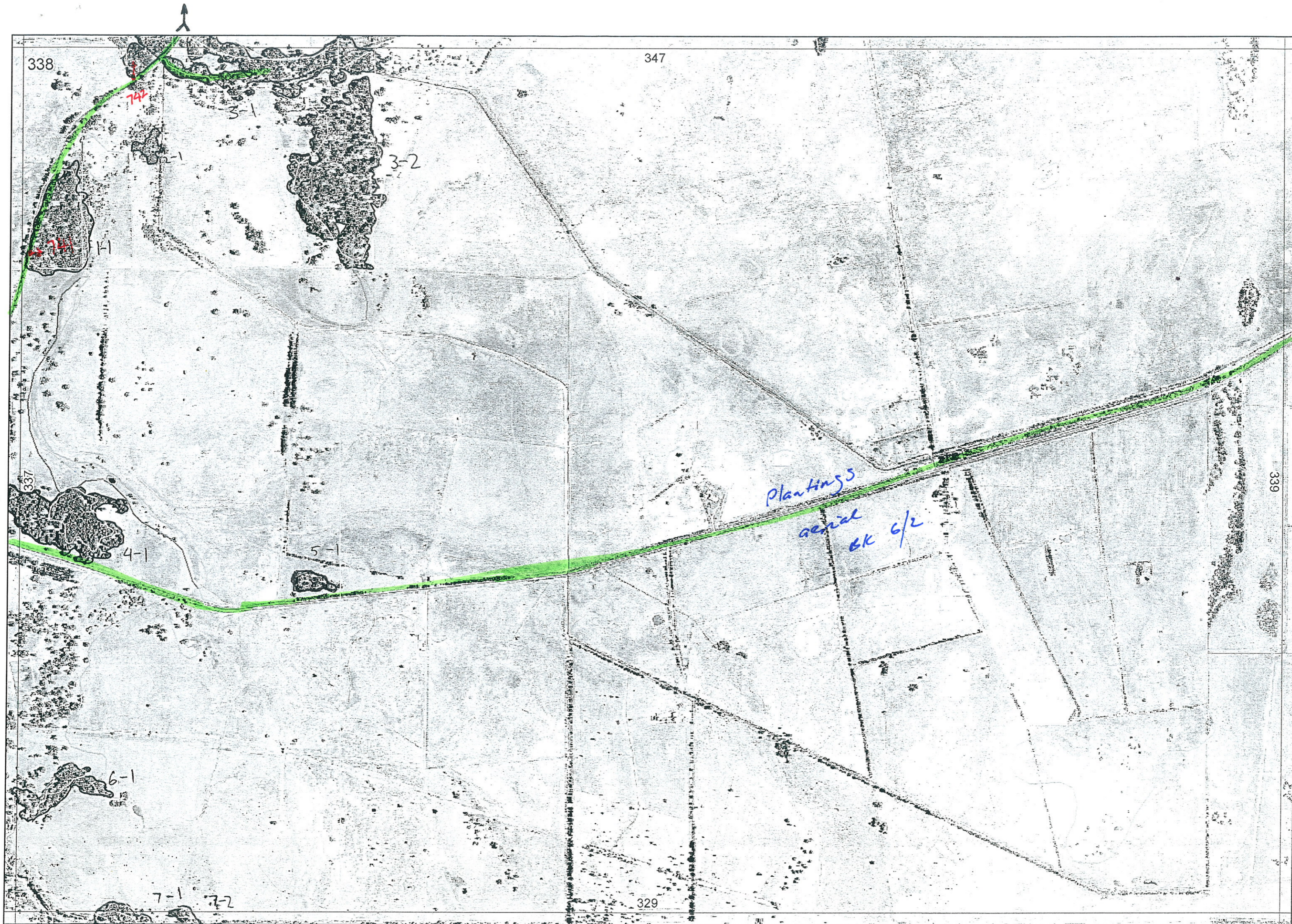
329

337

~~337~~ 4-11

OV

\*



338

347

339

329

742

3-1

3-2

4-1

5-1

6-1

7-1

7-2

Plantings

aerial

6/2

R E M	RE M2	XM AP	LIN TYPE	L I N E A R	M L U	U N I T S	U P L A N D ?	W E T L A N D ?	V I S I T ?	DETAIL/ Area Name	VEG CON	Field date 200_	OBS From	YNOTASS	D E T V I S R E Q D	COMMENTS	VEG STRUC/ DENS	FCT	DOMINANTS			
																			1	2	3	
1	1	N			B/P	1	Y	N			D	12/2005	edge			horres veg comm from photo	F	W	eucal	<del>Alfro</del> Dangra	Eucmar	
2	1	N			B/P	1		Y			D		distance				F		Eucrud	Melrha		
3	1	Y	drain	L	B/P	1		Y			G		serial distance				F		melrha	Eucrud	melpre	
<del>3</del>	<del>2</del>				<del>B/P</del>	<del>1</del>		<del>Y</del>					<del>serial</del>				<del>F</del>					misnumbered - part of 347-3-2
5	1	N			B/P	1	Y	N			CD		edge				F		Eucal			
6	1	N		L	P	1		Y					aerial				F					
7	1	Y			P	1		Y					aerial				F					
7	2	Y			P	1		Y					aerial				F					
3	3	Y			B/P	1		Y			G		edge				F		Eucrud	melrha		
3	4	Y			B/P	1		Y					aerial				F					
4	1		Deleted							Pines, DELETE		337		4-11		= Pines						
4	1	Y			P	1	N	Y			57						F	11A	Mel rha			

Summary/General Comments

SCP NATURAL AREA MAPPING SHEET  
 MAP SHEET 33B

REC PRE-FIELD A Richardson

REC FIELD

DoE 8/2005

Entered 1/12/05

REMNANT-PART NO	NON-LINEAR	LINEAR PLUS	CROSSES MAP SHEET BOUNDARY (Y/N)	FIELD VISIT REQ YES/NO	FIELD DATE	LOCAT. OBSERV.	WETLAND VEG (Y/N)	SIM REM	DETAIL (Y/N)	VEGETATION CONDITION	VEGETATION/PREVIOUS INFO
1-1	Y		N	Y	25/11	edge	N		N	D	Eucal, Melba, Eucalypt, Bangra, Zinnia, Waxes
2-1	Y		N	Y	29/11	distance	Y		N	D	Melba, Eucalypt
3-1	Y		Y	Y	29/11	distance	Y		N	7D	Melba, Eucalypt, Melpre
3-2	Y		N	N							
4-1	Y		Y	Y	23/11	edge	N		N	CD	Pines
5-1	Y		N	Y	26/11	edge	N		N	CD	Eucal
6-1	Y		N	N							
7-1	Y		N	N							
7-2	Y		N	N							
3-3			Y	Y	29/11	ridge	Y		N	G	Eucalypt, Melba
NOTES											