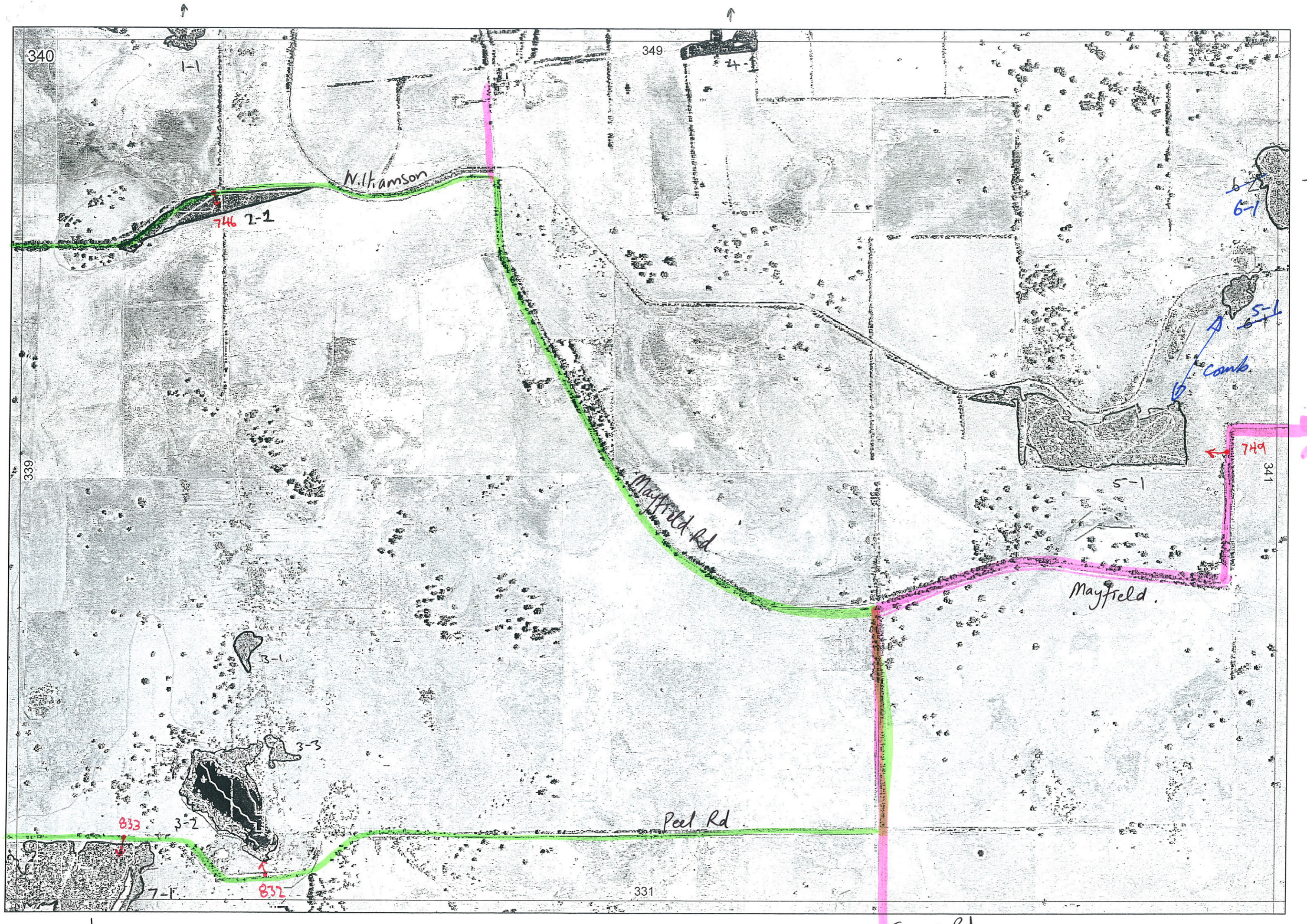


EEEA



340

349

N. Hamson

746 2-1

6-2
6-1

5-1
Conks

339

Mayfield Rd

341

Mayfield.

749

3-1

3-3

833 3-2

832

Peel Rd

331

Somers Rd

7-1

SCP NATURAL AREA MAPPING SHEET
MAP SHEET 340

REC PRE-FIELD A Richardson

REC FIELD SM + Bec R.

DoE 8/2005

REMNANT-PART NO	NON-LINEAR	LINEAR PLUS	CROSSES MAP SHEET BOUNDARY (Y/N)	FIELD VISIT REQ YES/NO	FIELD DATE	LOCAT. OBSERV.	WETLAND VEG (Y/N)	SIM REM	DETAIL (Y/N)	VEGETATION CONDITION	VEGETATION/PREVIOUS INFO
1-1	Y		Y								
2-1	Y		N	Y	24/11	edge	Y		Y	EY	Mellat Melome Mel sp (purple) Hakuar Vimjun mosaic
3-1	Y		N	N							
3-2	Y		N	Y	7/12	edge	Y		N	D-CP	Melita Eucrod Melpra
3-3	Y		N	N							
4-1	Y		Y		24/11	dist	N			CP	planted
5-1	Y		N	Y	24/11	dist	Y			E	M. rhaps, m. laterit, Hakaa sp, Viminena, Sedges
6-1	Y		N	Y	"	dist	Y			D.	M. rhaps
6-2	Y		Y	Y	24/11	dist	Y			D	M. rhaps
7-1	Y		Y	Y	7/12	edge	Y		N	G-D	Eucmar Bamili Alfa longla Excel
See new data sheet.											
NOTES											
Entered 13/12/05.											