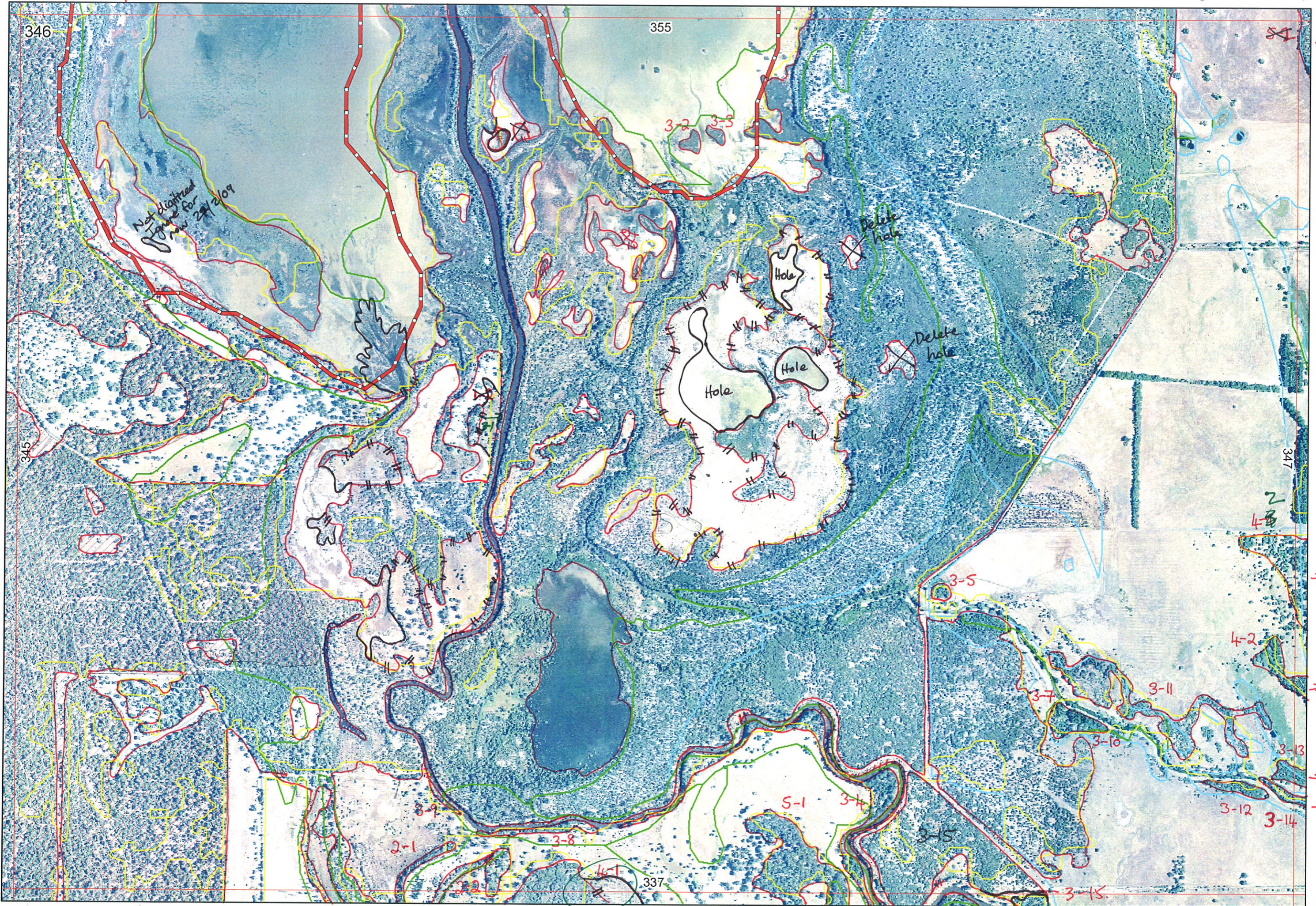


↑ 1-1 3-1 ↑ ↑ 3-1 356/1-3

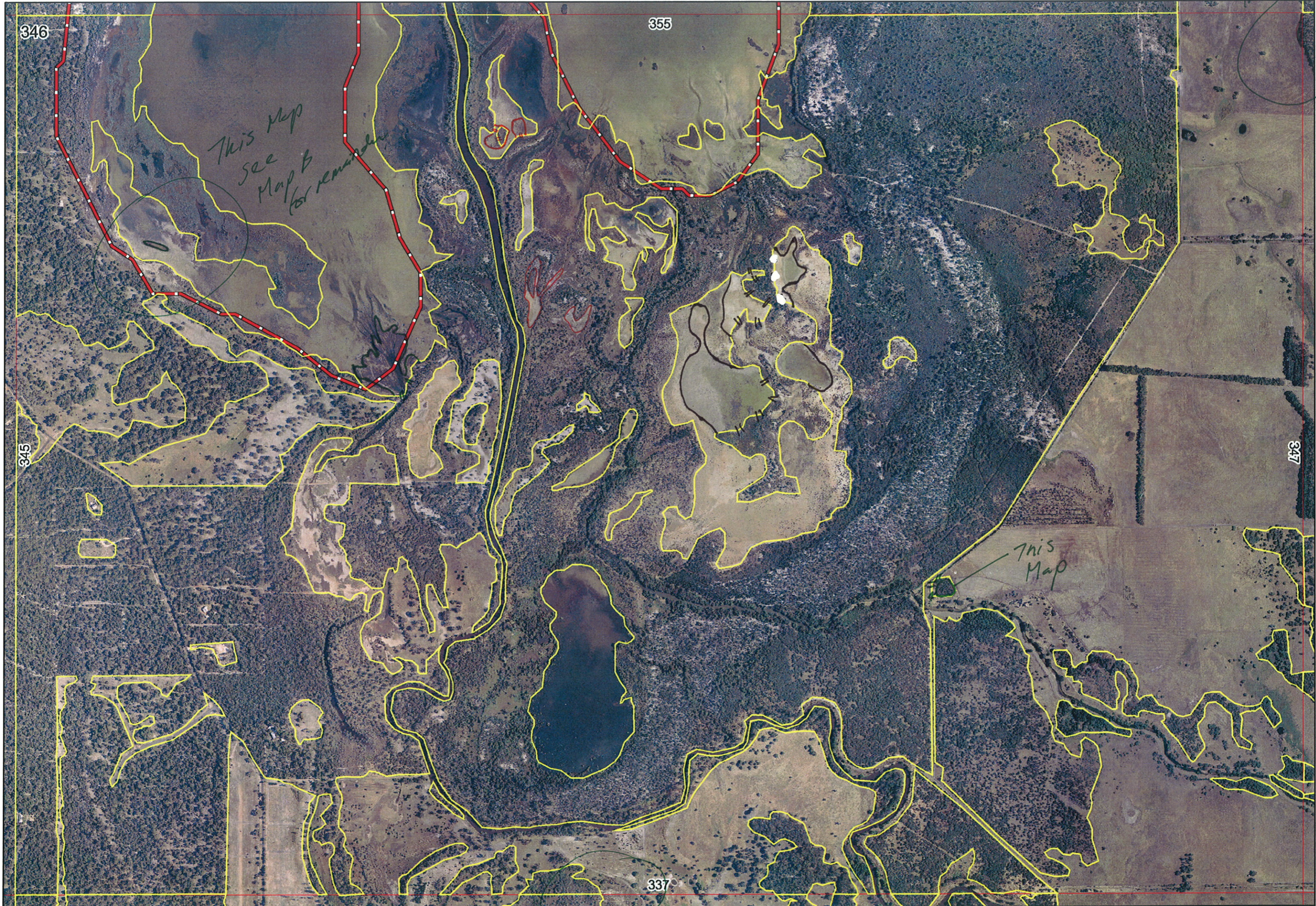


See Map A 337 337/4-6 337/4-5

EEEA

2 ✓

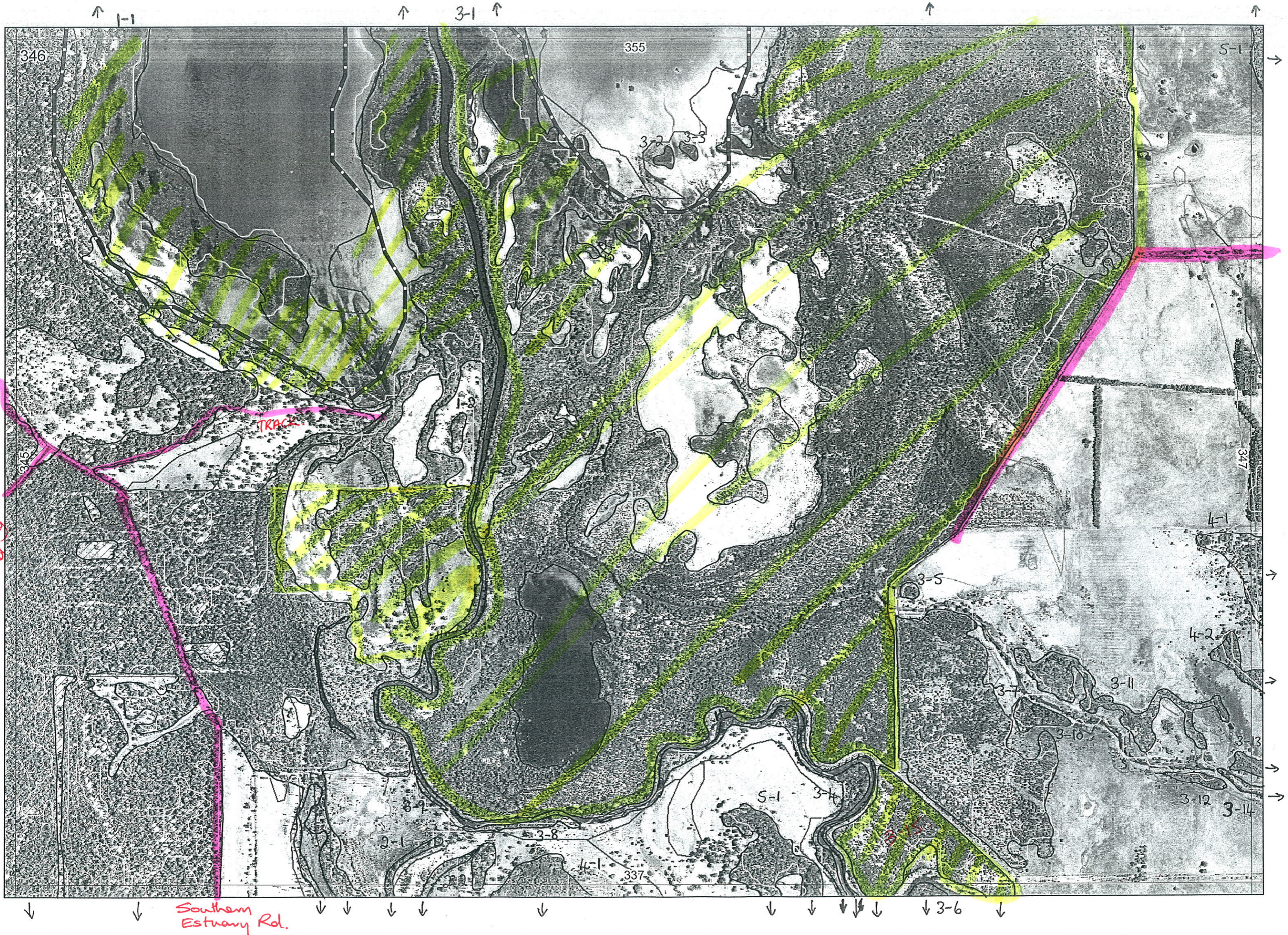
This Map



This Map
see Map B
for reminder

This
Map

See Map A ~~337~~ 337



B. Keighy

R E M	RE M2	XM AP	LIN TYPE	L I N E A R	M L U	U N I T S	U P L A N D ?	W E T L A N D ?	V I S I T ?	DETAIL/ Area Name	VEG CON	Field date	OBS From	YNOTASS	D E T V I S R E Q D	COMMENTS	VEG STRU CTURE DENS	FCT	DOMINANTS			
																			1	2	3	
1	1	Y			Est	4	✓	✓		Part Kooljerramp Nature Reserve	3	24/11	road.			Eucal, Eucmar, Xylocc, Agofle	SH	NA	Samphires			
																(3 main aerial plus above)	F	NA	Melaleucas	Euc rudis		
																	W	NA	Euc cal	Euc marg	Bank att	
1	2									joined												
2	2	Y	Channel	Y	Est	1		✓	N		5	2/02/06	aerial				F	NA	Euc rudis			
2	1	Y	Channel	Y	Est	1		✓	N		5	2/02/06	aerial				F	NA				
3	1	Y			Est	4		✓	Y	Harvey Estuary (B Keighy) Part Kooljerramp NR	4.3		part transets				F	NA	Euc rudis	Cas ob	Mel raph	
																	SH	NA	Samphires			
																	M	NA	Mel species			
3	2	N	Island	N	Est	1		✓	N		3		aerial				S		Samphires			
3	3	N	Island	N	Est	1		✓	N		3		aerial				S		"			
3	16									as above (Islands)												
3	25																					
3	4	Y	River	Y	Est	2		✓	Y	Part Lot 501 Southern Estuary Road	5.7	18/1/05	dist.				SH		Mel dsul	Mel vim	Hak. var.	
																	F	NA	Mel raph	Euc rudis		
3	5	N		N	Est	1		✓	N		5	2/02/06	aerial				F		Mel raph			
3	15	N		N	Est	1		✓	N		4.7	2/02/06	aerial				SH		Mel species			
3	7	Y		N	Est	1		✓	N		5.3	"	"									
3	8																					
3	12	Y	River	Y	Est	1		✓			5.3	18/02/05	edge				F		Euc rudis	Mel raph		

Summary/General Comments

B. Kerguelan

R E M	RE M2	XM AP	LIN TYPE	L I N E A R	M L U	U N I T S	U P L A N D ?	W E T L A N D ?	V I S I T ?	DETAIL/ Area Name	VEG CON	Field date 200_	OBS From	YNOTASS	D E T V I S R E Q D	COMMENTS	VEG STRUC/ DENS	FCT	DOMINANTS			
																			1	2	3	
3	13	Y	River	Y	P	1		✓	N		5.3	2/02/08	aerial	Too distant			F		Euc rudis	Mel rhoph		
3	14																					
3	6		See		Map					337												
4	1	Y	—	N	P	4		✓		Part Lot 501 Southern Esplanade Rd	4	18/02/05	Dist				F		Mel species			
4	2	Y	} See Sheet							347							SH		Asterlea			
4	2	Y									NO 7K 2-1			two 4-1's changed to				S		Sedges		
5	1	Y	—	N	P	1		✓	N	Part Lot 501 Southern Esplanade Road	5.7	18/02/05	Trans.				F		Banksia aff. Kurzea glab	Agonis flex	Euc cal	Euc merg

Summary/General Comments

N/R = NR Reserve

entered 24.1.06

SCP NATURAL AREA MAPPING SHEET
MAP SHEET 346

REC PRE-FIELD Bob

REC FIELD SM

DoE 8/2005

REMNANT-PART NO	NON-LINEAR	LINEAR PLUS	CROSSES MAP SHEET BOUNDARY (Y/N)	FIELD VISIT REQ YES/NO	FIELD DATE	LOCAT. OBSERV.	WETLAND VEG (Y/N)	SIM REM	DETAIL (Y/N)	VEGETATION CONDITION	VEGETATION/PREVIOUS INFO
1-1	N		Y	N/NR	24/11	Armsstrong Falls PA	Y			VC	Riparian Eucalyptus Xylocarpus Agalloch cont of 337-1-2
1-2	N		N	N							
2-1	N		Y	N							
2-2	N		Y	N							
3-1	N		Y	N/NR							
3-2	N	island	N	N/NR							
3-3	N	island	N	N/NR							
3-4	N	river	Y	Y							
3-5	N		N	N							
3-6	N		Y	Y							
3-7	N		N	N							
3-8	Y	River	N	N							
3-9	Y	River	N	N							
3-10	N		N	N							
3-11	N		N	N							
3-12	Y	River	N	N							
3-13	N		N	N							
3-14	N	River	N	N							
3-15	N		Y	N							
4-1	N		Y	N							
4-2	N		Y	N							
5-1	N		Y	N							
5-2	N		Y	N							
NOTES											