

366-5-1

366-6-2

357-1-1 Ag ✓

Ag ✓

356

366

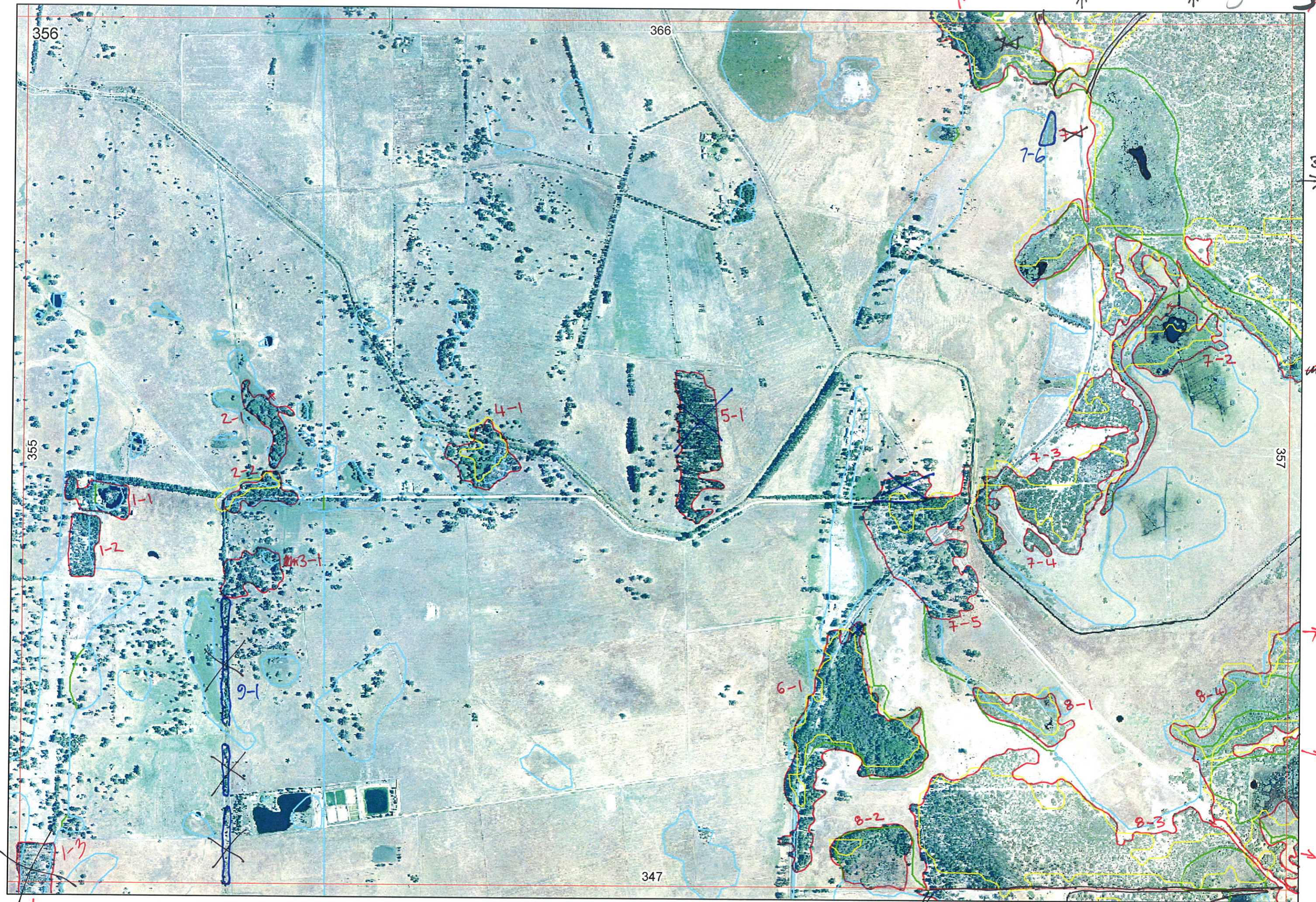
357

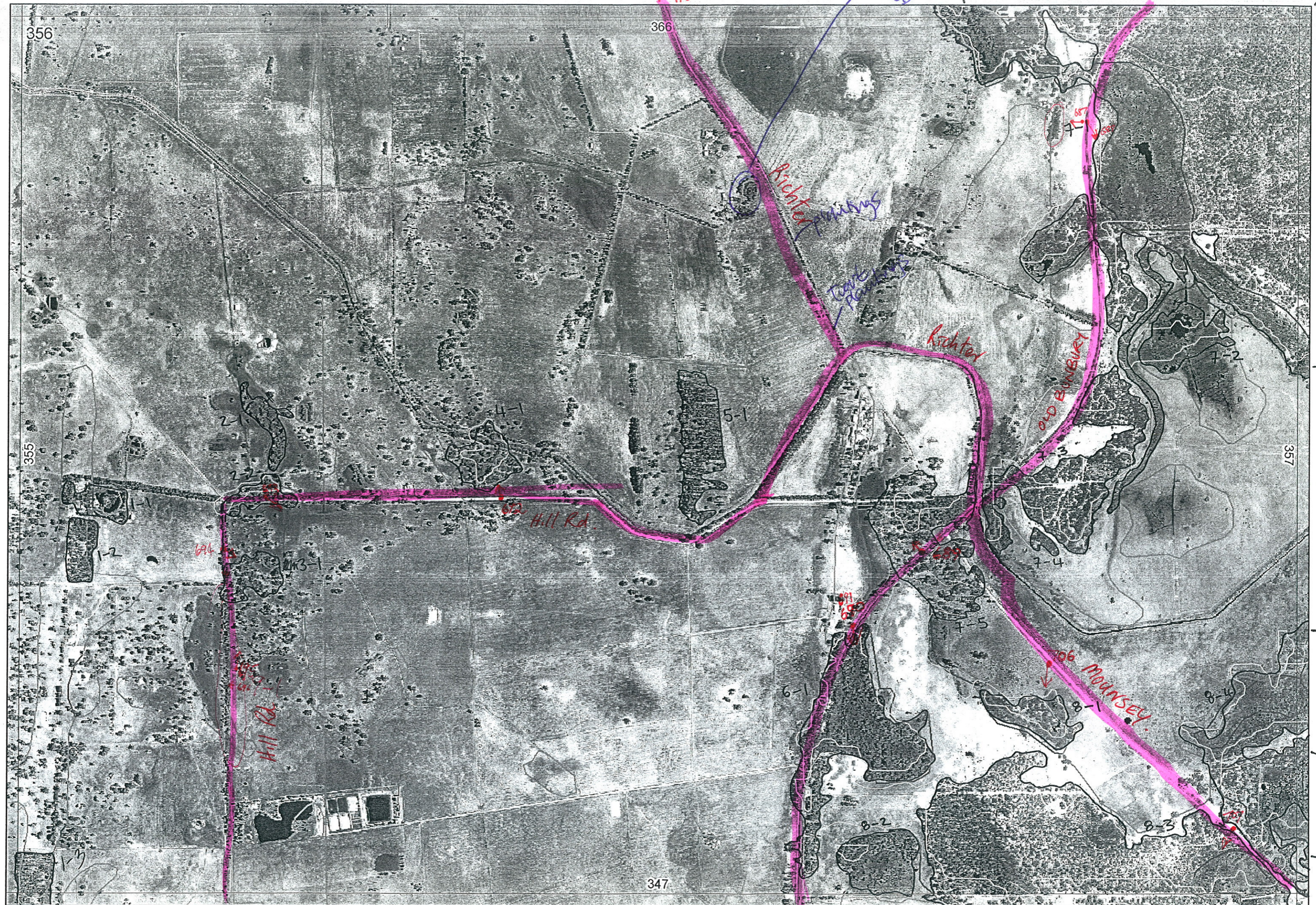
→ 101

355

357

347





Heron Pt Rd
Melna CD

Richter primary
Tate primary

Hill Rd.

Richter

OLD BUNBURY

MOUNSEY

HILL RD BACK TO OLD BUNBURY RD

356

366

355

357

347



2 ✓



plantings

R E M	RE M2	XM AP	LIN TYPE	L I N E A R	M L U	U N I T S	U P L A N D ?	W E T L A N D ?	V I S I T ?	DETAIL/ Area Name	VEG CON	Field date	OBS From	YNOTASS	D E T V I S I O N	COMMENTS	VEG STRUC/ DENS	FCT	DOMINANTS		
																			1	2	3
1	1				B	2		✓						No Access		Expect Meluha around waterway and Eucal around houses to W.	W				
1	2				B	1	✓									Expect Meluha Eucal	W				
2	1				B	1		✓			6	Edge					W		Meluha	Eucrud	
2	2				B	1		✓			6	Edge					W		Meluha	Eucrud.	
3	1				B	1		✓			6	Edge			grazed by cows				Meluha		
4	1				B	1		✓			6	Edge			over pasture				Meluha	Eucrud	
6	1				B	2	✓	✓			2	Edge							Meluha	Agofle	Melpre
																			Eucal		
7	1	✓			B	3		✓			3	Edge	✓	Retire & Combine w 357/1-1			F		Melpre		
																		W	Corcal	Kungla	
																		Sedge?			
7	2				B	2		✓						No Access	✓						
7	3					2	✓	✓						No Access	✓						
7	4					1		✓						No Access							
7	5					2	✓	✓			5.3	Edge							W	Mel rha	
																			W	Corcal	Xanpre

Summary/General Comments

2

Map Sheet Number 356

Pre Field Recorder(s) SM/BG

Field Recorder(s) Sall

Swan Bioplan Vegetation Mapping Data

R E M	RE M2	XM AP	LIN TYPE	L I N E A R	M L U	U N I T S	U P L A N D ?	W E T L A N D ?	V I S I T ?	DETAIL/ Area Name	VEG CON	Field date	OBS From	YNOTASS	D E T V I S I O N R E Q D	COMMENTS	VEG STRUC/ DENS	FCT	DOMINANTS		
																			1	2	3
8	1					2	✓	✓			5	15/11	Edge						Mel spp.	Xanpre	
8	2					2		✓			4-3		Dist.				W		Everud	Melrha	
8	3	✓				3	✓	✓			3		Edge				Sedge				
8	3					3											W		Banili	Corcal	Xanpre
8	4	✓				3	✓	✓					Edge				W		Mel sp.	Kungla	
8	4					3					3		Edge				Sed.		Sedges		
8	4					3											W		Banili	Corcal	Xanpre
8	4					3											W		Mel sp.	Kungla	
8	4					3											Sed.		Sedges		
7	6					1		✓			4-3		Edge				F.		Agoflex	Everud	
9	1		road	✓		1	✓	✓			3		edge				W		Melrha	Xanpre	

Summary/General Comments

Entered 16/17/11/05

MAP SHEET 356

REC PRE-FIELD BCI

REC FIELD SM

REMNANT-PART NO	NON-LINEAR Y/N	LINEAR PLUS	CROSSES MAP SHEET BOUNDARY (Y/N)	FIELD VISIT REQ YES/NO	FIELD DATE	LOCAT. OBSERV.	WETLAND VEG (Y/N)	SIM REM	DETAIL (Y/N)	VEGETATION CONDITION	VEGETATION/PREVIOUS INFO
1-1	N	BY ROAD	N	Y							
1-2	N		N	Y							
1-3	N		Y	Y							plantings
2-1	N		N	Y	15/11	road	Y			CD	Melrha Eucrod.
2-2	N	BY ROAD	N	Y	15/11	road	Y			CD	Melrha Eucrod
3-1	N		N	Y	15/11	road	Y			CD	Melrha with cons
4-1	N		N	Y	15/11	road	Y			CD	Eucrod Melrha over pasture
5-1	N		N	Y	15/11	road	Y			CD	Bluegums, natives interspersed
6-1	N		N	Y	15/11	road	Y			EX	Melrha Agonis flex Melpre Eucal
7-1	N		Y	Y	15/11	road	Y		Y	VA	wetland Kongia Melpre Eucal Astefas
7-2	N		N	Y	15/11	road	Y				
7-3	N		N	Y							
7-4	N		N	Y							
7-5	N		N	Y	15/11	road	N		N	ROAD-CD	Eucal Watsonia lovegrass Xampre wetland-Melrha
8-1	N		N	Y	15/11	edge	Y		N	D	Mel wetland Eucal over Xampre
8-2	N		N	Y	15/11	distance	Y		N	A-D	Eucrod Melrha over sedges
8-3	N		Y	Y	15/11	edge	Y			VA	upland: Banili Eucal Xampre Wet: Kongia sedges
8-4	N		Y	Y	15/11	edge	Y			VA	
7-6	Y		N	Y	15/11	road	Y			A-D	Agonis flex Eucrod
3-1	Y	road	BY Y	Y	15/11	inside	Y			VA-VA	Agonis flex Eucrod Melrha ? Dillill Para Xampre

see New Data sheet

NOTES