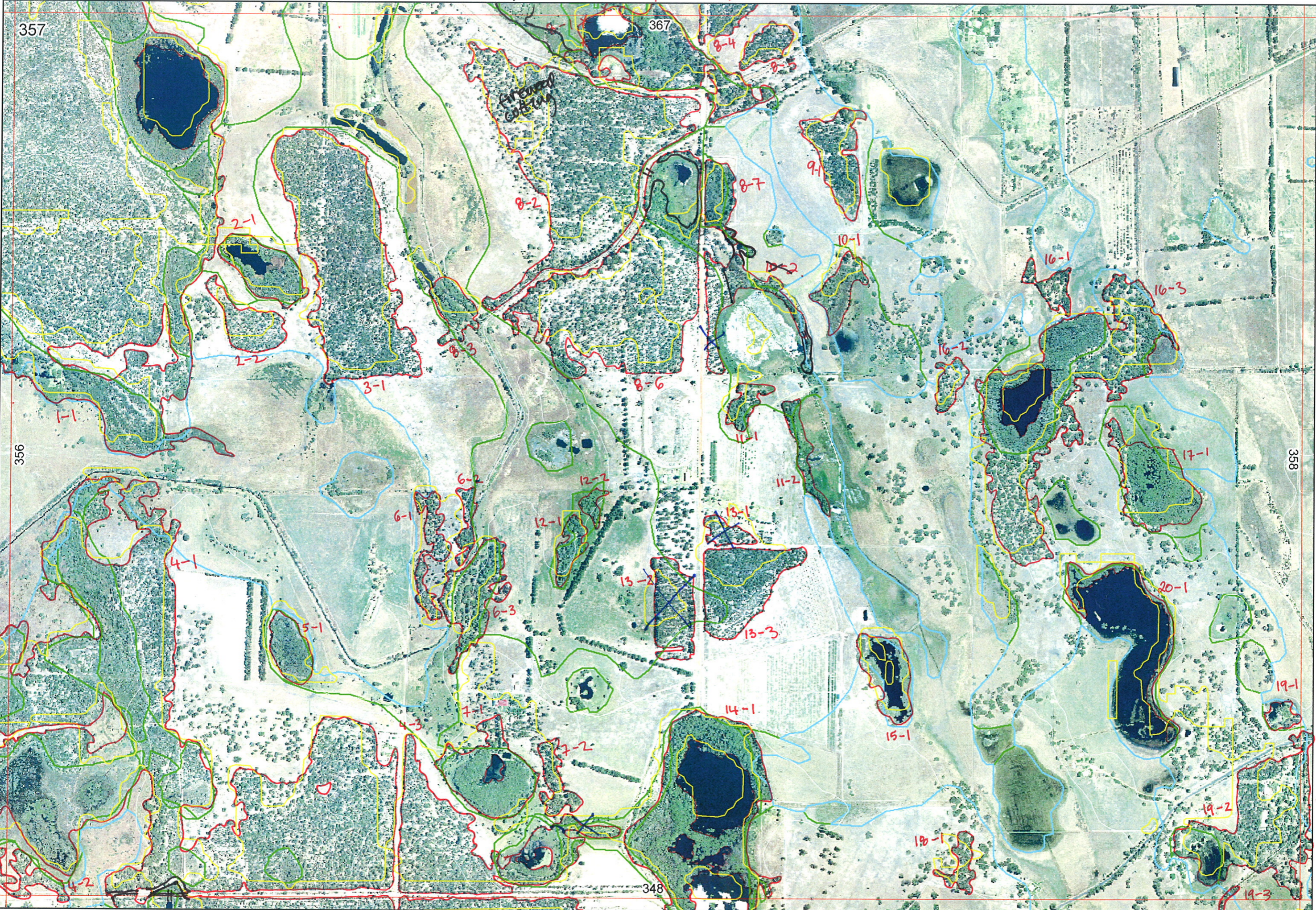


Heron Pt Rd

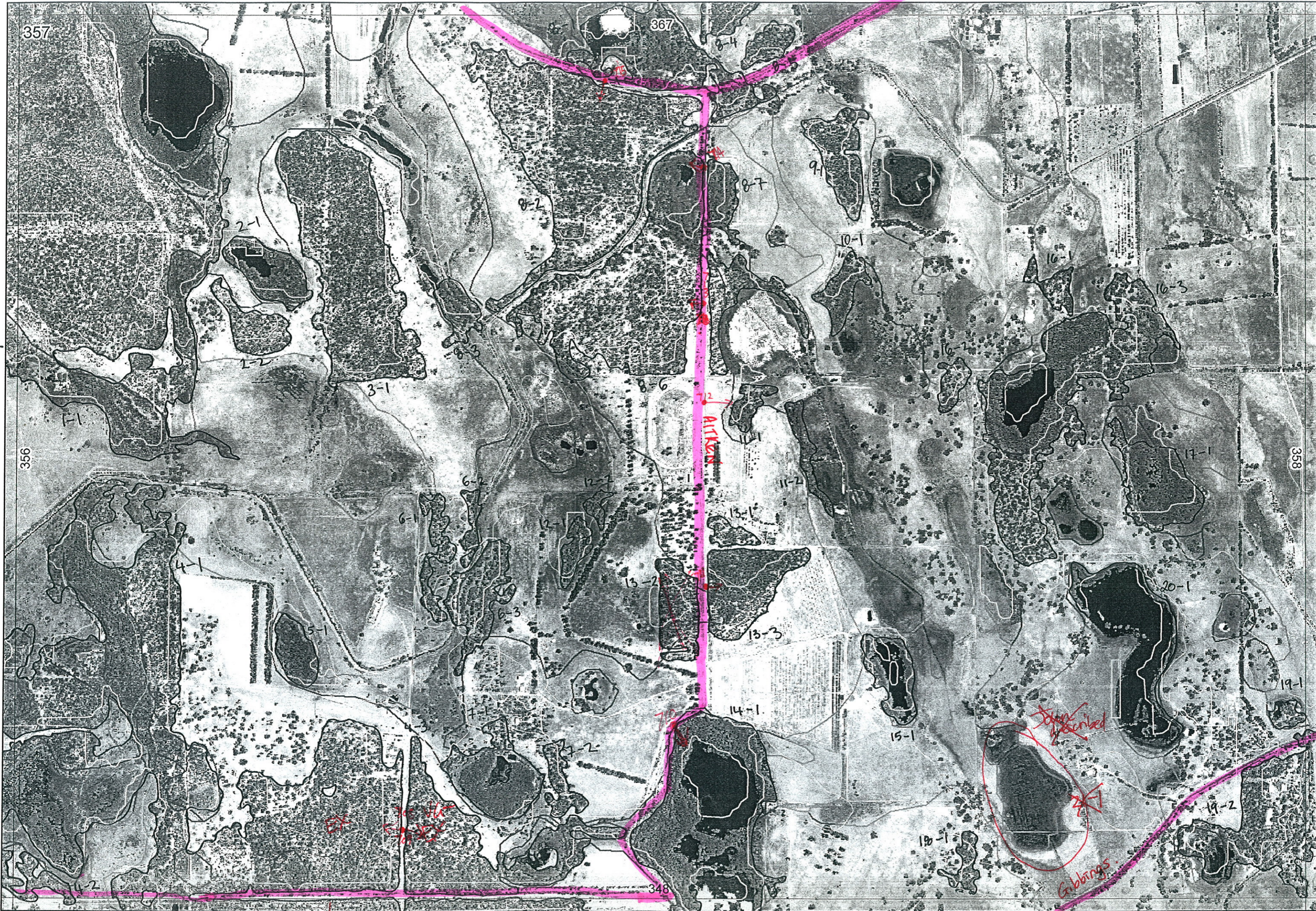
Ag ✓ Ag.



EEEA.

Heron Pt Rd.

Fishermans Rd.



MOUNSEY RD.

Gabbings

Aiken

the described

357

356

367

358

348

4-4

2 ✓



Entered
17/11

REMNANT-PART NO	NON-LINEAR Y/N	LINEAR PLUS	CROSSES MAP SHEET BOUNDARY (Y/N)	FIELD VISIT REQ YES/NO	FIELD DATE	LOCAT. OBSERV.	WETLAND VEG (Y/N)	SIM REM	DETAIL (Y/N)	VEGETATION CONDITION	VEGETATION/PREVIOUS INFO
1-1	N		Y	Y							
2-1	N	WETLAND	N	Y							
2-2	N		N	N							
3-1	N		N	Y							
4-1	N	WETLAND	Y	Y	15/11	road	Y		Y	large remnant upland + wetland w/ range of conditions Ex-G	
4-2	N		Y	N							
4-3	N	WETLAND	N	N							
4-4	N		Y	N							
5-1	N		N	N							
6-1	N		N	N							
6-2	N		N	N							
6-3	N		N	N							
7-1	N	WETLAND	N	Y							
7-2	N		N	N	15/11	distance	N		N		Excav Xampre Alfa
8-1	N	WETLAND	Y	Y	15/11	edge	Y				Melha Melpre Agonis Excud
8-2	N		N	Y	15/11	edge	N				Agonis Banili Bonalt Alfa kongla ueldtgs
8-3	N	WETLAND	N	N							
8-4	N		Y	N	15/11	edge	N			G-D	Banili Bonalt kongla
8-5	N		N	Y	15/11	edge	N		N	D	Banili Alfa Bonalt kongla Excud Excav
8-6	N	WETLAND	N	Y	15/11	edge	Y			G-VG	Kongla Alfa Bonalt ueldt Excav wetland - Excudis Mel
8-7	N	WETLAND	N	Y	15/11	edge	Y			VG-EX	Excud bracken / Calothromes type
9-1	N		N	N	15/11	distance	N			D	Alfa
10-1	N	WETLAND	N	Y							
10-2	N		N	Y							plantings around wetland
11-1	N		N	N	15/11	edge	Y			VG-G	Wetland mosaic Excud Excav Melpre
11-2	Y	wetland	N	N							
12-1	N		N	N							
12-2	N		N	N							
13-1	N		N	N							
13-2	N		N	Y	15/11	edge				GD	plantation
13-3	N		N	Y	15/11	edge				GD	
14-1	N	WETLAND	Y	Y	15/11	edge	Y		Y	VG	Alfa Banili kongla Bonalt
15-1	N	WETLAND	N	N						VG-EX	wetland Melpre kongla Xampre
16-1	N		N	N							
16-2	N		N	N							
16-3	N	WETLAND	N	N							
17-1	N	WETLAND	N	N							
18-1	N		N	N							
19-1	N	W/L	N	N							
19-2	N	W/L	Y	Y	23/11/05	edge	N			G-D	E. marg, Alfa frax, Kun gla, Bon atten, Dasy brom
20-1	N	W/L	N	N	23/11/05	dist	Y			D	Mel (can't see ? rhaphio)

See New Data Sheet

NOTES 4-1 Excud Xylacc kongla Alfa Bonalt over Hibhyp upland Banmen

14-1 "Boomer Swamp"

REM	RE M2	XM AP	LIN TYPE	LINEAR	MLU	UNITS	UPLAND?	WETLAND?	VISIT?	DETAIL/ Area Name	VEG CON	Field date 2005 15/11	OBS From	YNOTASS	DETVISREORD	COMMENTS	VEG STRUC/DENS	FCT	DOMINANTS						
																			1	2	3				
1	1	✓			B? P	3	✓	✓			3			No Access	✓	Probably same as 4-1	F		Melpre						
					↓									Edge		Combined to 357/1-1 due to misnumbering originally	W		Corcal	Kungla					
2	1					2		✓			3			No Access	✓	Probably same as 4-1						-aerial W-meltp., W-sedges			
2	2					1	✓				3			No Access	✓	Probably same as 4-1.						-aerial U-banatt, baniti, allfra			
3	1					2	✓	✓			3			No Access	✓	Probably same as 4-1						-aerial U-banatt, baniti, allfra			
4	1	✓				4	✓	✓			3			Edge	✓	+ Kungla, Banatt, Hibhyp, Bannaen			Eucmar	Xylocc	Allfra.				
4	2	✓				1	✓							No Access	✓								-aerial U-eucmar, banatt		
4	3					3	✓	✓						No Access	✓									-aerial U-eucmar, banatt, W-Eucrud, meltp.	
4	4	✓			P	1	✓							No Access	✓										seems to be entirely on map 348 to the S

Summary/General Comments

R E M	RE M2	XM AP	LIN TYPE	L I N E A R	M L U	U N I T S	U P L A N D ?	W E T L A N D ?	V I S I T ?	DETAIL/ Area Name	VEG CON	Field date	OBS From	YNOTASS	D E T V I S R E Q D	COMMENTS	VEG STRU C/ DENS	FCT	DOMINANTS				
																			1	2	3		
5	1				P	1		✓				15/11			No Access		W		-aerial W-Melgp.				
6	1					1		✓							No Access		W		-aerial W-Melgp.				
6	2					1		✓							No Access		W		-aerial W-Melgp.				
6	3					1		✓							No Access		W		-aerial W-Melgp.				
7	1					2	✓	✓							No Access	Expect Eucal.	W		-aerial U-Eucal, W-Melgp.				
7	2					1		✓					Distance		Not able to see.		F		Melssp.				
7	2					1		✓					Distance		Too far to assess veg and in field.	W		Eucal	Xanpre	Allfra			
8	1	✓				2	✓	✓			S		Edge	✓	t. Eucrud.	W		Melrha	Melpre	Agofle			
8	2					1		✓							Not able to see.	Expect Banksia woodland	W						
8	2					1		✓			S		Edge	✓	+ Allfra, Kungla, veldt grass.	W		Agofle	Banili	Banatt.			
8	3					1		✓								Expect Melrha.						-aerial W-Melgp.	
8	4	✓				1		✓			4.3		Edge	✓			W		Banili	Banatt.	Kungla.		
8	5					1		✓			S		Edge		+Kungla, Eucmar, Eucal.	W		Banili	Allfra	Banatt.			
8	6					3	✓	✓			3.7		Edge	✓			W		Kungla	Banatt	Allfra		
																	W		Eucrud	melgp.			
																	Sed.						
8	7				P	1		✓			2.7		Edge	✓	+ Calothamnus, typha			Eucrud	Bracken				

Summary/General Comments

3

Aerial Int BG/BK

Map Sheet Number 357

Pre Field Recorder(s) BG

Field Recorder(s) SM

Swan Bioplan Vegetation Mapping Data

R E M	R E M 2	X M A P	L I N E T Y P E	L I N E A R	M L U	U N I T S	U P L A N D ?	W E T L A N D ?	V I S I T ?	D E T A I L / A r e a N a m e	V E G C O N	F i e l d d a t e 2005	O B S F r o m	Y N O T A S S	D E T A I L R E Q U I R E D	C O M M E N T S	V E G S T R U C / D E N S	F C T	D O M I N A N T S		
																			1	2	3
9	1				P	2	✓	✓			5	15/11	DIST.						Allgra.		
10	1				V	2		✓			5		No Access			Probably same as 9-1.			-aerial W-Melsp. W-sedge.		
10	2					1	✓						No Access			Plantings to West & SWest.					
11	1					2		✓			3-3		Edge						Eucrud	Melpre	
																			Corcal		
11	2		channel y		2			✓								Probably same as 11-1			-aerial W-Melso		
12	1					1		✓					No Access			Expect Melrha Melsp.					
12	2					1		✓					"			Expect Melrha Melsp.					
13	3					1	✓				3		Edge			+ Kungla.			Allgra	Banili	Banatt
14	1					1	✓			'BOOMER SWAMP'	2-7		Edge		✓				Melpre.	Kungla	Xanpre
15	1					1		✓					No Access			-aerial W-Melso.			Xanpre	Kungla	
16	1					1	✓						No Access			-aerial U-??					
16	2					1	✓						No Access								
16	3				V	2	✓	✓					No Access								
17	1				P	2	✓	✓					No Access			-aerial W-Melso.					

Summary/General Comments

R E M	RE M2	XM AP	LIN TYPE	L I N E A R	M L U	U N I T S	U P L A N D ?	W E T L A N D ?	V I S I T ?	DETAIL/ Area Name	VEG CON	Field date 200 <u>5</u>	OBS From	YNOTASS	D E T V I S R E Q D	COMMENTS	VEG STRUC/ DENS	FCT	DOMINANTS			
																			1	2	3	
18	1				P	1	✓									No Access.						
19	1				V	1	✓									No Access						
19	2	✓			V	2	✓	✓			4-3	23/11	Edge			+ Banath, Dasbrom				Eucmar.	Allofra	Kungla
20	1				P	1	✓				5	23/11	Dist			Too far to see spp.				- aerial W-Malp.		

Summary/General Comments