

Ag

369/1-5

4-1

359

369

2-1

4-1

3-1

2-3

→ 4-1

358

1-1

360

2-4

350

2-2

→ 4-1

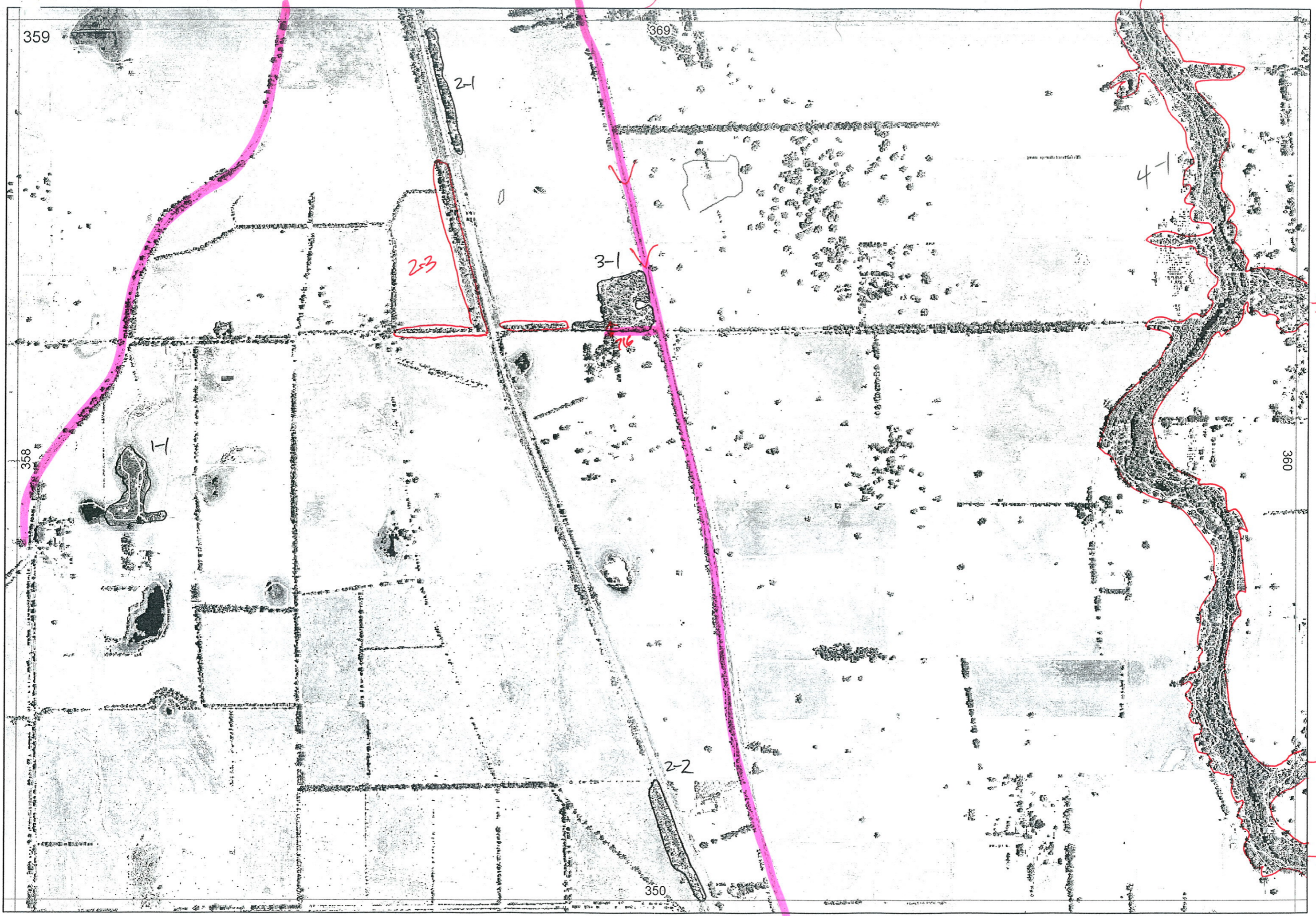
→ 4-1

EGEA



Codrup Rd

SW Hwy



359

369

2-1

2-3

3-1

76

4-1

358

360

350

2-2

Swan Bioplan Vegetation Mapping Data

REM	RE M2	XM AP	LIN TYPE	LINEAR	MLU	UNITS	UPLAND?	WETLAND?	VISIT?	DETAIL/ Area Name	VEG CON	Field date 2005 23/11	OBS From	YNOTASS	DETVISREQD	COMMENTS	VEG STRUC/ DENS	FCT	DOMINANTS			
																			1	2	3	
1	1				P	1		✓			6		Dist.			Dense canopy over cows	F		Melkha			
2	1		Rail	✓	P	1	✓									Probably same as 2-3	W					
2	2		Rail	✓	P	1	✓				4.7		Dist.						Eucal.	Xanpre	Jaefur.	
3	1		road	Balk		1	✓				2		Edge	Y	+ xanpre, kinaus				Eucal.	Eucmar	Bangra	
2	3	N	Rail/ fence	✓	P	1	✓				3.3		Edge	NA					Eucal	Kinaus	Xanpre	
4	1		Channel	✓	RIV	2	✓	✓					No Access									
2	4		Rail	✓		2		✓			3.3		Aerial				BK	SH W	NA 3	Peri ellip. Euc cal		

Summary/General Comments

Entered
1/12/05

REMNANT-PART NO	NON-LINEAR	LINEAR PLUS	CROSSES MAP SHEET BOUNDARY (Y/N)	FIELD VISIT REQ YES/NO	FIELD DATE	LOCAT. OBSERV.	WETLAND VEG (Y/N)	SIM REM	DETAIL (Y/N)	VEGETATION CONDITION	VEGETATION/PREVIOUS INFO
1-1	N	Wland	N	Y	23/11/05	distance	Y			Deg.	Mirhaphio over cows! dense canopy.
2-1	Y	Road	N	Y	23/11/05						
2-2	Y	Road	N	Y	23/11/05	distance	N	N		> deg	E. calo, X. preissi, Jacksonia fr
3-1	Y		N	Y	23/11/05	edge	N	N	Y	Excellent (in beeches on road)	Euc. calo, Euc. mang, B. grandis, X. preissi, K. australis
2-3	Y	railway	N	Y	23/11/05	edge	N	N	N	VG-G	E. calo, K. australis X. preissi.
4-1	Y	Drain	Y	Y							
See New Data Sheet											

NOTES